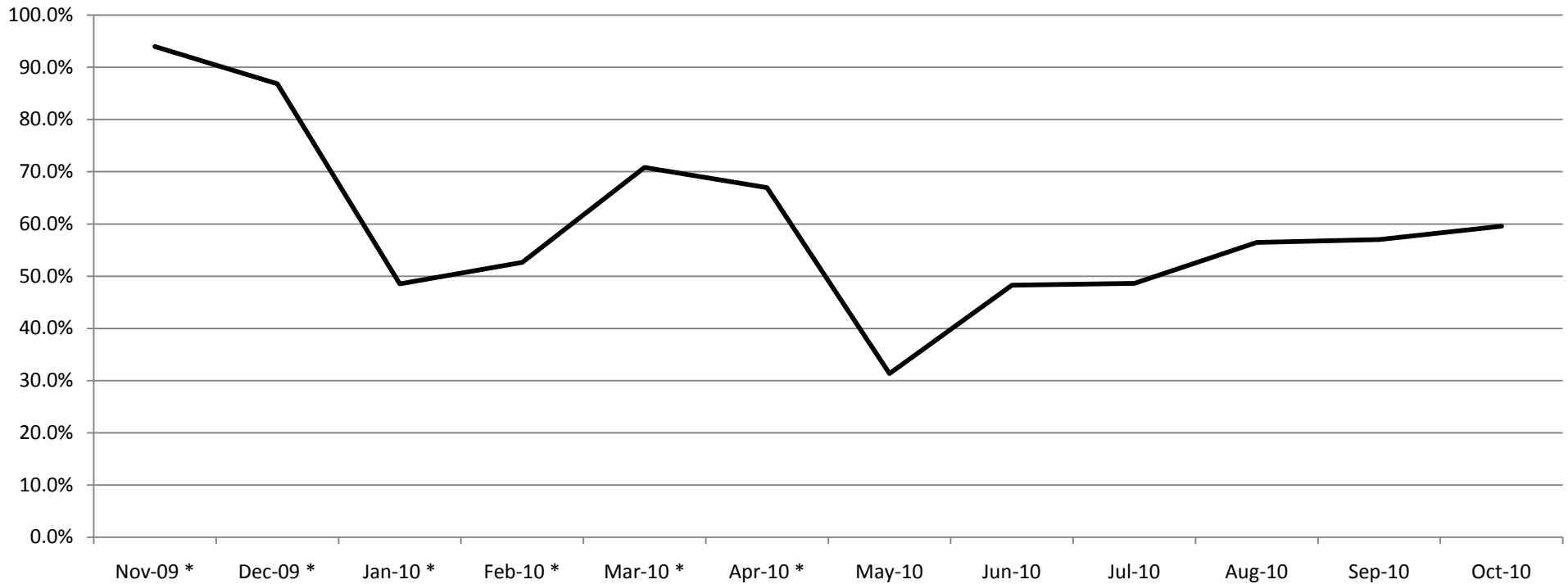


DEPARTMENT OF CORRECTIONS AND REHABILITATION  
 Adult Programs Key Performance Indicators  
 October 2010

## Academic Education Enrollment %



Academic Programming												
Assignment/ Enrollment Rates	Nov-09 *	Dec-09 *	Jan-10 *	Feb-10 *	Mar-10 *	Apr-10 *	May-10	Jun-10	Jul-10	Aug-10	Sep-10	Oct-10
Capacity (slots)	36,961	36,843	35,064	21,850	16,013	17,206	38,786	38,768	38,768	38,768	38,768	38,860
Enrollment	34,740	31,994	17,021	11,499	11,345	11,520	12,153	18,714	18,846	21,896	22,105	23,153
% Enrolled	94.0%	86.8%	48.5%	52.6%	70.8%	67.0%	31.3%	48.3%	48.6%	56.5%	57.0%	59.6%

\*Effective June 1, 2010, Enrollment data is the Ending Enrollment of the month and will not match COMPSTAT data.

\* Prior to May 2010, enrollment data for academic and vocational education was reported based on the capacity associated with active classrooms (quota). Beginning in May 2010, the definitions were changed to reflect the full budgeted capacity including vacant positions. Historical capacity data using the new definition is not available. As a result, the denominators prior to May 2010 are not consistent with those after.