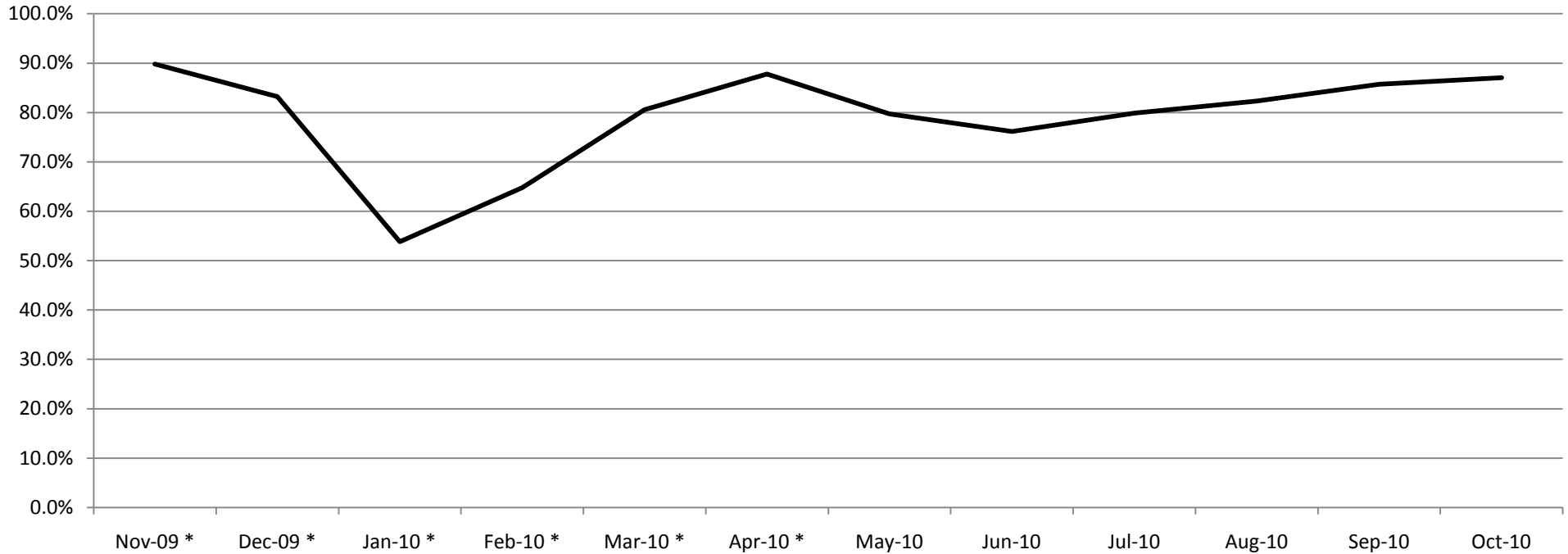


DEPARTMENT OF CORRECTIONS AND REHABILITATION
 Adult Programs Key Performance Indicators
 October 2010

Vocational Education Enrollment %



Vocational Programming												
Assignment/ Enrollment Rates	Nov-09 *	Dec-09 *	Jan-10 *	Feb-10 *	Mar-10 *	Apr-10 *	May-10	Jun-10	Jul-10	Aug-10	Sep-10	Oct-10
Capacity (slots)	8,452	8,833	7,917	5,382	4,373	4,380	4,833	4,833	4,914	4,914	4,914	4,914
Enrollment	7,590	7,353	4,262	3,486	3,523	3,846	3,852	3,681	3,926	4,046	4,212	4,278
% Enrolled	89.8%	83.2%	53.8%	64.8%	80.6%	87.8%	79.7%	76.2%	79.9%	82.3%	85.7%	87.1%

*Effective June 1, 2010, Enrollment data is the Ending Enrollment of the month and will not match COMPSTAT data.

* Prior to May 2010, enrollment data for academic and vocational education was reported based on the capacity associated with active classrooms (quota). Beginning in May 2010, the definitions were changed to reflect the full budgeted capacity including vacant positions. Historical capacity data using the new definition is not available. As a result, the denominators prior to May 2010 are not consistent with those after.