

HISTORICAL TRENDS

1985 - 2005



**CALIFORNIA DEPARTMENT OF CORRECTIONS AND REHABILITATION
OFFENDER INFORMATION SERVICES BRANCH
DATA ANALYSIS UNIT**

STATE OF CALIFORNIA

DEPARTMENT OF CORRECTIONS AND REHABILITATION

JAMES TILTON

Secretary (A)

K. W. PRUNTY

Undersecretary (A)

ADULT OPERATIONS

DAVID RUNNELS

Chief Deputy Secretary (A)

JOHN DOVEY

*Director,
Division of Adult Institutions*

JIM L'ETOILE

*Director,
Division of Adult Parole Operations*

SANDRA DUVECK

*Assistant Secretary (A),
Office of Research*

JAY ATKINSON

Chief (A), Offender Information Services Branch

DATA ANALYSIS UNIT



LORI ASUNCION

Staff Services Manager I

STEPHEN KRIMETZ

Associate Information Systems Analyst

CHRISTOPHER SHORES

Assistant Information Systems Analyst

BETTY VISCUSO

Associate Information Systems Analyst

1515 S STREET

SACRAMENTO, CA 95814

TELEPHONE: (916) 445-1310

Internet: <http://www.cdcr.ca.gov/ReportsResearch/OffenderInfoServices/OffenderInformation.html> Email:
<http://www.cdcr.ca.gov/ReportsResearch/OffenderInfoServices/contactDAU.asp>

HISTORICAL TRENDS

CALIFORNIA DEPARTMENT OF CORRECTIONS AND REHABILITATION

1985 - 2005

This report presents some basic information about the California Department of Corrections and Rehabilitation's (CDCR) prisoners and parolees. Historical trend information covering the past twenty years is presented in graphs and tables for various offender characteristics and the institutional design bed capacity.

Institution Population

Figure 1 and Table 1 show the number of CDCR offenders incarcerated in California State prisons, conservation camps, community correctional centers, or Department of Mental Health hospitals. The institution population grew from 50,111 in 1985 to 168,035 in 2005. This table shows an increase of 4,096 in 2005, which nearly doubles last year's increase of 2,154. The male felon population shows a 2.4% increase of 3,632 over the last year. An increase of 405 caused the female felon population to increase by nearly 4% in 2005.

Racial/Ethnic Composition

Figure 2 and Table 2 illustrate the racial/ethnic composition of the institution population during the 1985 to 2005 time period. Shifts in racial composition have been related to the influx of the male Hispanic population compared to other groups. Over the last 20 years, we have continued to see the male Hispanic population rise from 27.6% in 1985 to 38.1% in 2005, while the White and Black male populations have both continued to decline over the same period. The female composition has stayed basically the same throughout the last 20 years, with the exception of a 5% spike in the 1989 Black population, since then, that population steadily declined back to the composition of 20 years ago.

Institution Population by Offense Category

Figure 3 and Table 3 show the change in the percentage of felon inmates incarcerated for person, property, drug, and other offenses. From 1985 until 1997, there had been a general decrease in person offenses, but since 1998 we have seen a continuous increase of almost 6%. Property crimes for the male population have remained fairly steady since 1999, at approximately 20%. However, property crimes for the female population increased over 7% from 1999 to 2004, then decreased by almost 1% in 2005. Drug offenses have continued to decrease during the last 7 years for the entire population.

New Admissions by Offense Category

Figure 4 and Table 4 show the rate of felon new admissions by type of offense. From 1985 to 2005, the rate of felon new admissions increased from 77.81 to 131.88 per 100,000 of the California population. After experiencing a downturn in admissions from 1998 to 2001, there has been a steady increase in new admissions over the last 4 years.

Parole Violators Returned to Prison

Figure 5 and Table 5 illustrate the number of felon parole violators returned to prison. From 1985 through 2001, the Parole Violators Returned to Custody (PV-RTC's) was on a continuous incline and the Parole Violators With a New Term (PV-WNT's) continued to rise until 1999. The PV-WNT's have seen an increase in the past several years, while the total Parole Violator population began to decrease in 2001 and only began increasing again in 2005.

Admission/Return Status

Figure 6 and Table 6 show new admissions, Parole Violators-Returned to Custody (PV-RTC's) and Parole Violators-With New Terms (PV-WNT's) as a percentage of the overall felon institution population. From 2002 to 2005, there has been a gradual decline in the percent of male and female PV-RTC's. The percent of new admissions has decreased about 8 percentage points the last 20 years. There has been moderate growth in the male and female institution populations during the past 4 years, with an extreme increase of 4,037 during the past year.

Felon Parole and Civil Narcotic Outpatient Population

Figure 7 and Table 7 show the overall growth in the felon parole and Civil Narcotic Addict (CNA) outpatient population. Total felon parolees increased by 84,138 parolees in 20 years - from 29,061 parolees in 1985 to 113,199 parolees in 2005. There has been a decrease over the last 4 years of 937 in the CNA outpatient population. The felon parolee population showed a slight increase in 2005, after 3 consecutive years of decline.

Releases to Parole

Figure 8 and Table 8 present information on the total number of felon releases to parole each year. From 1985 to 1999 there was a steady rise in felon releases to parole. The number of releases to parole from 1999 to 2001 had a zero percent fluctuation, hovering at about 126,000 total releases to parole. There had been a fairly large decrease in the number of felon releases to parole from 2002 to 2003, with a total of about 10,000 or 9% fewer felons being released to parole; however, the 2005 Calendar Year showed a 4% increase over the prior year in releases.

Average Time Served on Prison Sentence

Figure 9 and Table 9 show the change in the average (median) months of time served on their prison sentence by felons first released to parole. Between 1985 and 1990, the time served for male felons steadily declined from 22 months to a low of 16 months, where it leveled off through 1994. It again increased between 1994 and 1996, to approximately 19 months, where it remained until the last 2 years, ultimately dropping to 16 months in 2005, for the male population. The average time served for the female population went from a 17 months in 1985 to a low of 13 months by 1994. It then rose to 14 months in 1995, where it remained constant until the last 2 years, where it has remained at 13 months.

Design Bed Capacity and Population

Figure 10 and Table 10 show the change in the design bed capacity of CDCR facilities, the institution population, and the rate of occupancy from June 30, 1985 to June 30, 2005. From 1985 to 1998, design bed capacity increased nearly threefold. From 1998 to 2005 the capacity has remained virtually unchanged at about 80,000 inmates. The institution population has increased more than threefold from 45,528 inmates in 1985 to 158,837 inmates in 2005. The rate of occupancy increased 39.3% from 1985 to 2005, with a rate of occupancy of 196.1% as of June 30, 2005.

This document was prepared by Stephen Krimetz, Offender Information Services Branch. In summarizing the data, efforts were made to maintain a reasonable consistency among years as various definitions of data elements changed. Numbers and percents used in the report may not add to totals due to independent rounding.

Additional statistical data may be obtained from:

<http://www.cdcr.ca.gov/ReportsResearch/OffenderInfoServices/OffenderInformation.html>

Telephone: (916) 445-1310;

e-mail: <http://www.cdcr.ca.gov/ReportsResearch/OffenderInfoServices/contactDAU.asp>.

FIGURE 1
ADULT CORRECTIONAL INSTITUTION POPULATION
FELONS AND NON-FELONS
DECEMBER 31, 1985 - DECEMBER 31, 2005

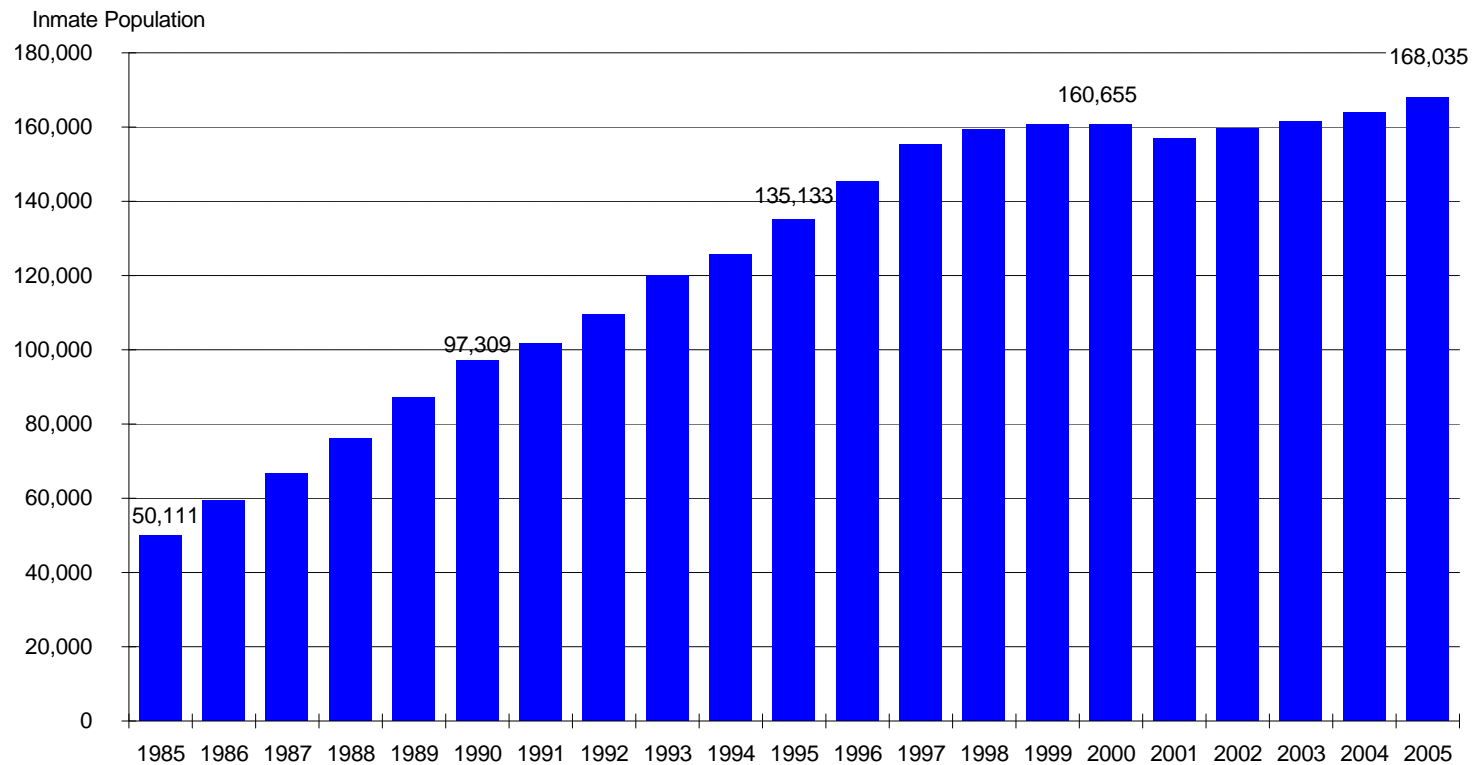


TABLE 1
ADULT CORRECTIONAL INSTITUTION POPULATION*
BY SEX
FELONS AND NON-FELONS
DECEMBER 31, 1985 - DECEMBER 31, 2005

AS OF DECEMBER 31	TOTAL POPULATION	CHANGE IN POPULATION	MALE				FEMALE			
			TOTAL	FELONS	CNA**	OTHERS***	TOTAL	FELONS	CNA**	OTHERS***
1985	50,111	50,111	47,205	45,761	1,032	412	2,906	2,518	330	58
1986	59,484	9,373	55,920	54,512	1,102	306	3,564	3,213	292	59
1987	66,975	7,491	62,823	61,105	1,375	343	4,152	3,708	388	56
1988	76,171	9,196	71,278	69,379	1,587	312	4,893	4,401	453	39
1989	87,297	11,126	81,297	78,911	2,045	341	6,000	5,427	519	54
1990	97,309	10,012	90,807	88,264	2,127	416	6,502	5,858	596	48
1991	101,808	4,499	95,506	92,837	2,192	477	6,302	5,678	587	37
1992	109,496	7,688	102,749	99,494	2,862	393	6,747	5,973	724	50
1993	119,951	10,455	112,370	108,828	3,096	446	7,581	6,745	773	63
1994	125,605	5,654	117,390	113,705	3,314	371	8,215	7,379	798	38
1995	135,133	9,528	126,079	122,969	2,822	288	9,054	8,263	755	36
1996	145,565	10,432	135,481	132,986	2,158	337	10,084	9,395	657	32
1997	155,276	9,711	144,392	141,944	2,139	309	10,884	10,281	560	43
1998	159,563	4,287	148,078	145,997	1,798	283	11,485	10,863	578	44
1999	160,687	1,124	149,513	147,555	1,696	262	11,174	10,653	472	49
2000	160,655	-32	149,677	147,690	1,700	287	10,978	10,427	505	46
2001	157,142	-3,513	147,391	145,662	1,449	280	9,751	9,375	328	48
2002	159,695	2,553	149,899	148,328	1,289	282	9,796	9,426	307	63
2003	161,785	2,090	151,331	149,914	1,119	298	10,454	10,097	304	53
2004	163,939	2,154	152,966	151,681	994	291	10,973	10,671	258	44
2005	168,035	4,096	156,573	155,313	969	291	11,462	11,076	343	43

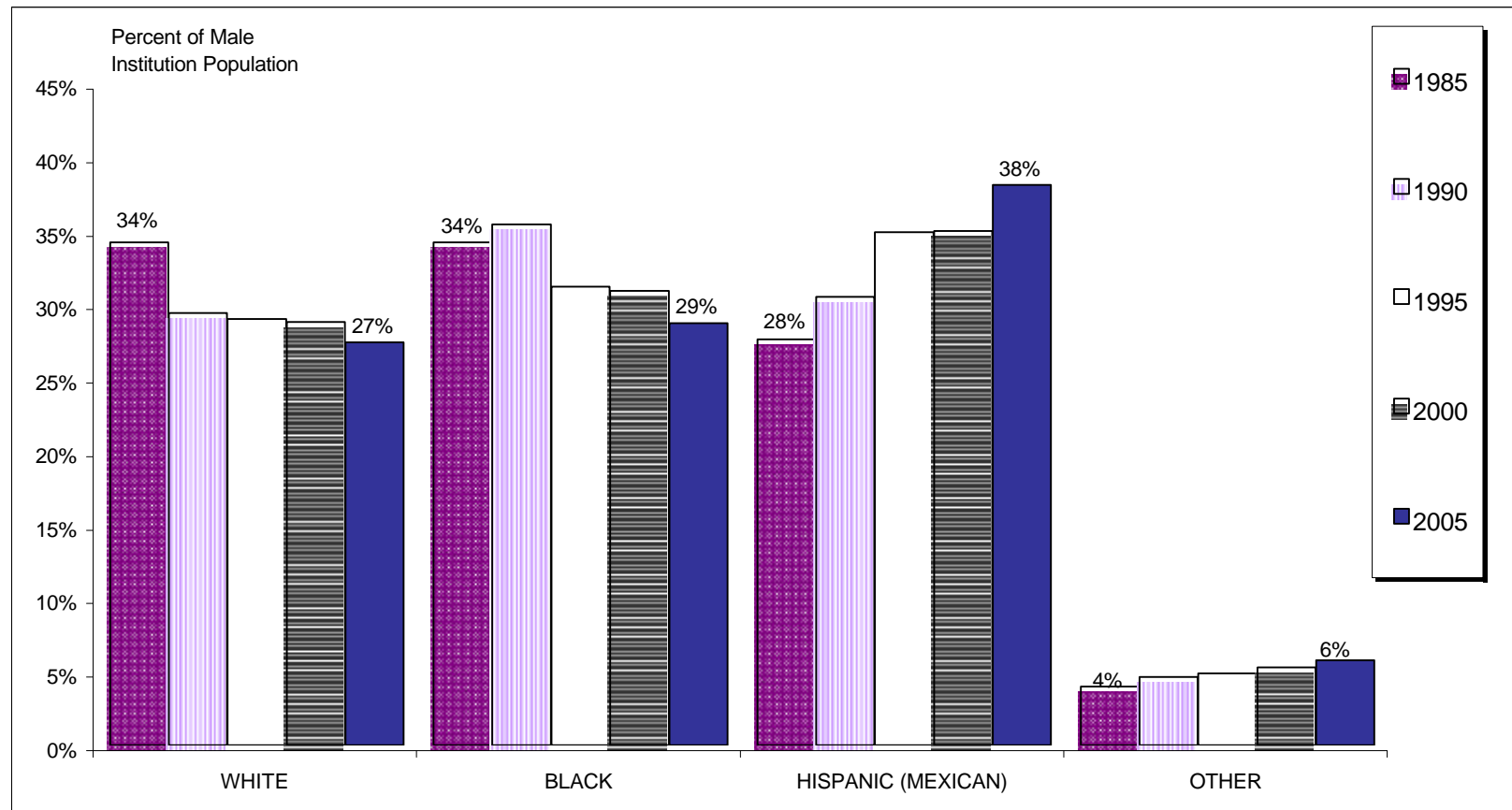
* INSTITUTION POPULATION includes offenders sentenced to state prison who are incarcerated in a state prison, conservation camp, community correctional center, or Department of Mental Health hospital.

** CNA -- Civil Narcotic Addict.

*** OTHERS includes Youth Authority wards, county diagnostic cases, safe keepers and prisoners from other states or the federal prison system.

FIGURE 2

**RACIAL/ETHNIC COMPOSITION
MALE INSTITUTION POPULATION
FELONS AND NON-FELONS
DECEMBER 31, 1985 - DECEMBER 31, 2005**



Note: Percents used in the report may not add to totals due to independent rounding.

TABLE 2
**RACIAL/ETHNIC COMPOSITION
INSTITUTION POPULATION
BY SEX
FELONS AND NON-FELONS
DECEMBER 31, 1985 - DECEMBER 31, 2005**

AS OF DECEMBER 31	TOTAL POPULATION	MALE					FEMALE				
		TOTAL	WHITE	BLACK	HISPANIC (MEXICAN)	OTHER	TOTAL	WHITE	BLACK	HISPANIC (MEXICAN)	OTHER
1985	50,111	47,205	34.2%	34.2%	27.6%	4.0%	2,906	37.0%	28.1%	26.8%	8.1%
1986	59,484	55,920	32.5%	35.0%	28.4%	4.2%	3,564	37.5%	27.6%	26.4%	8.5%
1987	66,975	62,823	32.1%	35.3%	28.3%	4.3%	4,152	38.3%	28.9%	24.9%	8.0%
1988	76,171	71,278	30.8%	37.1%	27.8%	4.3%	4,893	36.2%	31.1%	24.4%	8.4%
1989	87,297	81,297	30.0%	37.0%	28.5%	4.6%	6,000	34.1%	36.3%	22.6%	7.1%
1990	97,309	90,807	29.4%	35.4%	30.5%	4.6%	6,502	34.7%	35.9%	23.0%	6.4%
1991	101,808	95,506	28.8%	34.5%	31.8%	4.9%	6,302	36.3%	35.3%	22.6%	5.8%
1992	109,496	102,749	28.5%	33.4%	33.3%	4.9%	6,747	35.9%	35.1%	23.8%	5.2%
1993	119,951	112,370	28.3%	32.4%	34.4%	4.9%	7,581	36.5%	34.9%	24.4%	4.3%
1994	125,605	117,390	28.6%	31.9%	34.5%	5.0%	8,215	36.6%	34.3%	23.6%	5.6%
1995	135,133	126,079	29.0%	31.2%	34.9%	4.9%	9,054	36.9%	33.8%	23.0%	6.3%
1996	145,565	135,481	29.1%	31.2%	34.8%	4.9%	10,084	35.9%	34.2%	23.6%	6.3%
1997	155,276	144,392	29.5%	30.9%	34.7%	4.9%	10,884	37.4%	33.5%	23.7%	5.4%
1998	159,563	148,078	29.0%	31.1%	34.8%	5.1%	11,485	37.8%	33.2%	23.7%	5.4%
1999	160,687	149,513	28.8%	31.1%	34.8%	5.3%	11,174	38.4%	33.6%	23.4%	4.6%
2000	160,655	149,677	28.8%	30.9%	35.0%	5.3%	10,978	38.1%	33.3%	24.0%	4.6%
2001	157,142	147,391	28.6%	30.4%	35.5%	5.5%	9,751	38.3%	32.5%	24.4%	4.8%
2002	159,695	149,899	28.5%	29.9%	36.1%	5.5%	9,796	38.8%	30.9%	25.5%	4.8%
2003	161,785	151,331	28.1%	29.4%	36.9%	5.7%	10,453	39.2%	29.7%	26.3%	4.8%
2004	163,939	152,966	27.8%	29.1%	37.3%	5.8%	10,973	38.9%	29.5%	26.6%	5.0%
2005	168,035	156,573	27.4%	28.7%	38.1%	5.8%	11,462	38.7%	28.7%	27.6%	5.0%

Note: Percentages include Youth Authority wards, county diagnostic cases, safe keepers and prisoners from other states or the federal prison system.

FIGURE 3

**FELON INSTITUTION POPULATION
PERSON AND DRUG OFFENSES
DECEMBER 31, 1985 - DECEMBER 31, 2005**

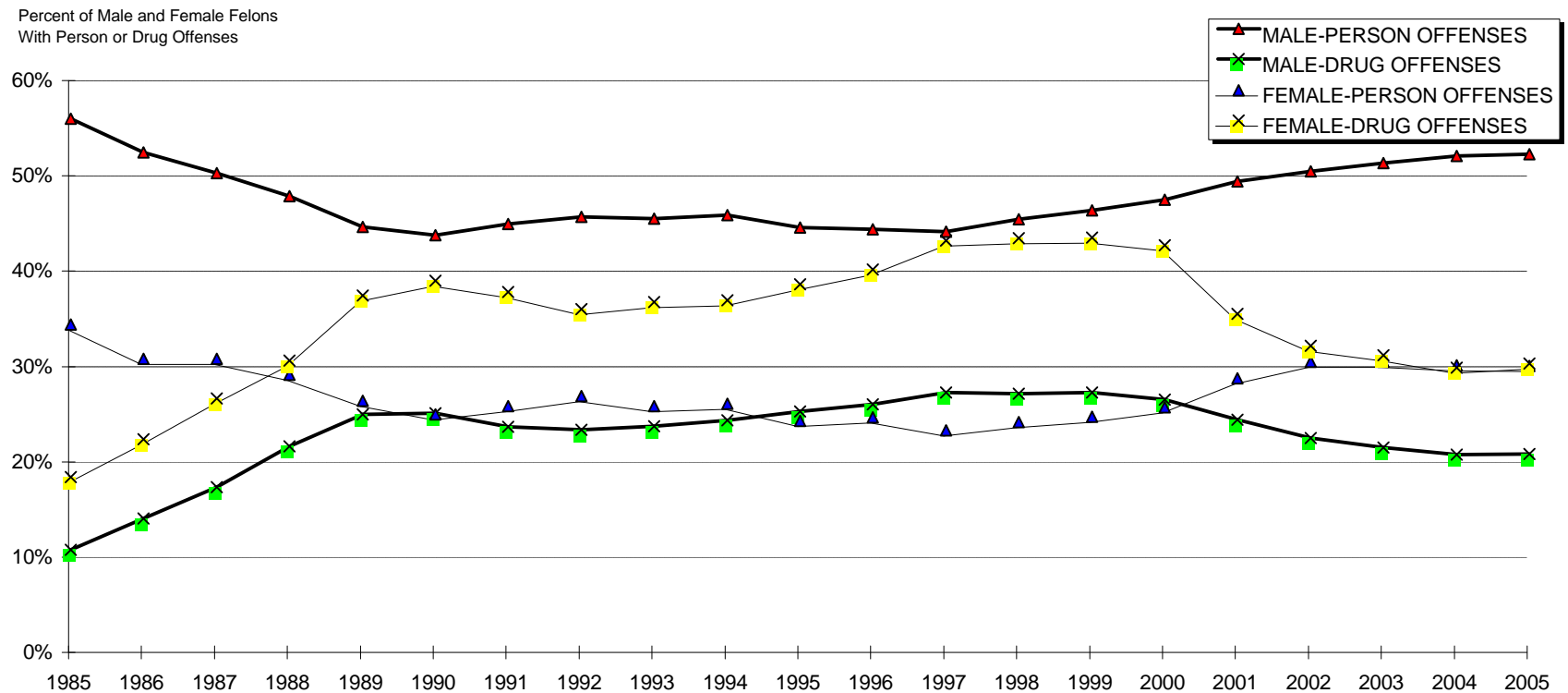


TABLE 3
FELON INSTITUTION POPULATION
BY SEX AND TYPE OF OFFENSE
DECEMBER 31, 1985 - DECEMBER 31, 2005

AS OF DECEMBER 31	MALE					FEMALE				
	POPULATION	PERSON	PROPERTY	DRUGS	OTHER	POPULATION	PERSON	PROPERTY	DRUGS	OTHER
		%	%	%	%		%	%	%	%
1985	45,761	55.4%	30.0%	10.2%	4.4%	2,518	33.8%	44.4%	17.8%	4.1%
1986	54,512	51.9%	31.4%	13.5%	3.3%	3,213	30.2%	44.3%	21.8%	3.6%
1987	61,105	49.7%	29.8%	16.8%	3.7%	3,708	30.2%	40.3%	26.0%	3.4%
1988	69,379	47.3%	28.3%	21.1%	3.3%	4,401	28.5%	38.5%	30.0%	2.9%
1989	78,911	44.0%	27.0%	24.4%	4.6%	5,427	25.8%	34.3%	36.8%	3.0%
1990	88,264	43.2%	26.3%	24.5%	6.1%	5,858	24.4%	33.9%	38.4%	3.4%
1991	92,837	44.4%	25.6%	23.1%	7.0%	5,678	25.2%	33.5%	37.2%	4.0%
1992	99,494	45.1%	25.9%	22.8%	6.2%	5,973	26.3%	34.0%	35.4%	4.3%
1993	108,828	44.9%	25.4%	23.1%	6.6%	6,745	25.3%	34.2%	36.2%	4.3%
1994	113,705	45.3%	24.4%	23.8%	6.6%	7,379	25.5%	33.3%	36.3%	4.9%
1995	122,969	44.0%	24.5%	24.7%	6.8%	8,263	23.7%	33.8%	38.0%	4.4%
1996	132,986	43.8%	23.9%	25.4%	6.9%	9,395	24.1%	31.5%	39.6%	4.9%
1997	141,944	43.5%	23.0%	26.7%	6.8%	10,281	22.7%	30.6%	42.6%	4.0%
1998	145,997	44.8%	21.9%	26.6%	6.7%	10,863	23.6%	29.5%	42.9%	3.8%
1999	147,555	45.8%	20.8%	26.7%	6.8%	10,653	24.1%	28.8%	42.9%	4.1%
2000	147,690	46.9%	20.2%	25.9%	7.0%	10,427	25.1%	28.2%	42.1%	4.5%
2001	145,662	48.9%	20.1%	23.8%	7.2%	9,375	28.2%	32.1%	35.0%	4.7%
2002	148,328	49.9%	20.7%	21.9%	7.6%	9,426	29.9%	33.4%	31.6%	5.0%
2003	149,914	50.7%	20.7%	20.9%	7.7%	10,097	29.9%	34.8%	30.6%	4.7%
2004	151,681	51.5%	20.5%	20.2%	7.8%	10,671	29.5%	36.2%	29.3%	4.9%
2005	155,313	51.7%	20.4%	20.2%	7.7%	11,076	29.5%	35.3%	29.7%	5.4%

Note: Percents used in the report may not add to totals due to independent rounding.

FIGURE 4
TOTAL FELON NEW ADMISSIONS FROM COURT
RATE PER 100,000 CALIFORNIA POPULATION
CALENDAR YEARS 1985 - 2005

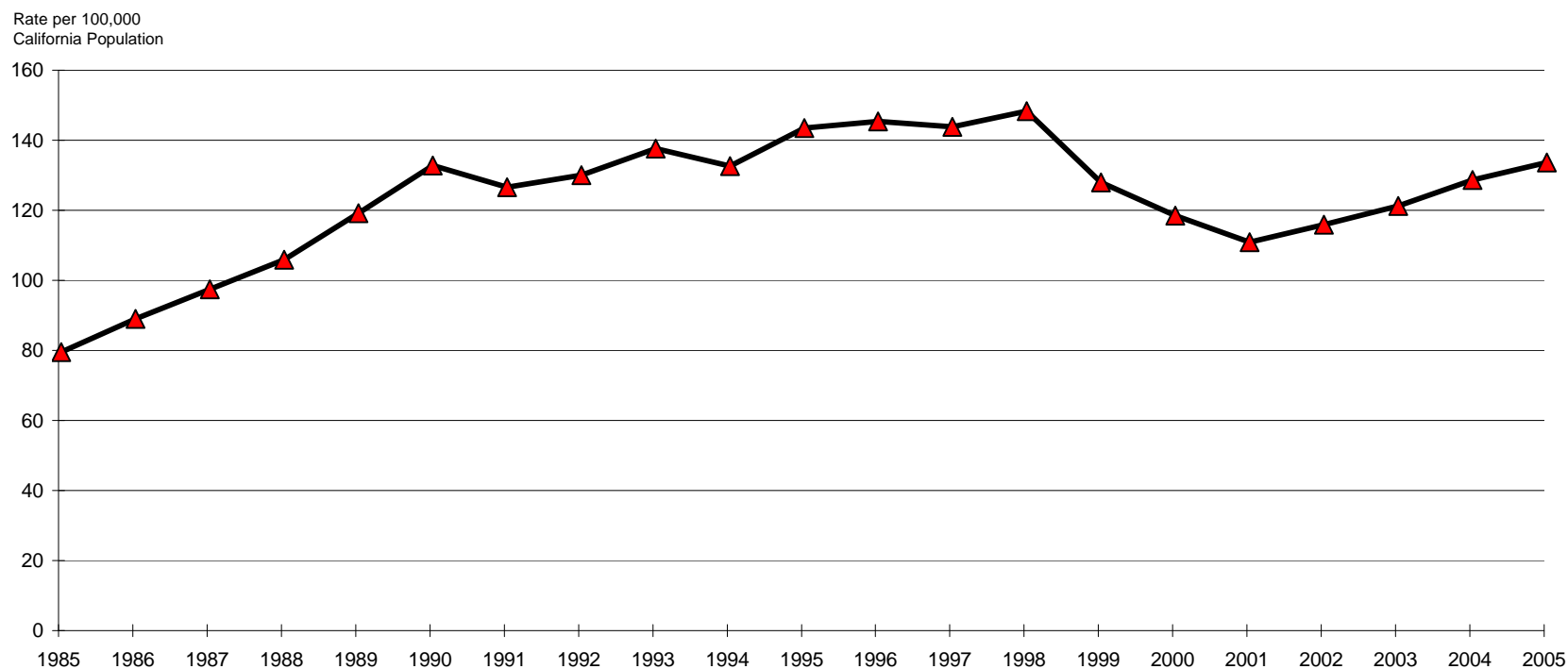


TABLE 4

**FELON NEW ADMISSIONS FROM COURT
BY TYPE OF OFFENSE AND SEX
RATE PER 100,000 CALIFORNIA POPULATION*
CALENDAR YEARS 1985 - 2005**

CALENDAR YEAR ***	TOTAL FELON NEW ADMISSIONS		MALE								FEMALE							
			PERSON		PROPERTY		DRUGS		OTHER**		PERSON		PROPERTY		DRUGS		OTHER**	
	NUMBER	RATE	NUMBER	RATE	NUMBER	RATE	NUMBER	RATE	NUMBER	RATE	NUMBER	RATE	NUMBER	RATE	NUMBER	RATE	NUMBER	RATE
1985	20,543	77.81	7,659	29.01	7,033	26.64	3,238	12.26	930	3.52	370	1.40	859	3.25	371	1.41	83	0.31
1986	23,588	87.20	7,863	29.07	7,909	29.24	4,954	18.31	896	3.31	380	1.40	956	3.53	546	2.02	84	0.31
1987	26,515	95.66	7,957	28.71	8,264	29.82	6,966	25.13	982	3.54	439	1.58	1,030	3.72	803	2.90	74	0.27
1988	29,579	104.18	8,007	28.20	8,384	29.53	9,425	33.19	1,192	4.20	434	1.53	1,043	3.67	1,019	3.59	75	0.26
1989	34,226	117.45	8,187	28.09	8,961	30.75	11,364	39.00	2,360	8.10	491	1.68	1,136	3.90	1,598	5.48	129	0.44
1990	39,272	131.01	9,779	32.62	9,735	32.48	12,051	40.20	4,104	13.69	483	1.61	1,255	4.19	1,690	5.64	175	0.58
1991	38,252	124.82	10,135	33.07	9,324	30.42	10,871	35.47	4,455	14.54	481	1.57	1,213	3.96	1,588	5.18	185	0.60
1992	40,158	128.30	11,087	35.42	10,090	32.24	11,256	35.96	4,086	13.05	581	1.86	1,296	4.14	1,535	4.90	227	0.73
1993	43,149	135.94	11,543	36.37	10,679	33.64	12,475	39.30	4,513	14.22	560	1.76	1,417	4.46	1,715	5.40	247	0.78
1994	41,580	130.80	10,772	33.88	10,138	31.89	12,367	38.90	4,268	13.43	592	1.86	1,454	4.57	1,696	5.34	293	0.92
1995	45,459	141.78	11,142	34.75	11,147	34.77	14,132	44.08	4,475	13.96	569	1.77	1,701	5.31	2,004	6.25	289	0.90
1996	46,487	143.55	12,019	37.12	10,555	32.59	14,761	45.58	4,180	12.91	700	2.16	1,740	5.37	2,290	7.07	242	0.75
1997	46,823	142.07	12,345	37.46	10,004	30.35	15,026	45.59	4,236	12.85	672	2.04	1,750	5.31	2,524	7.66	266	0.81
1998	49,105	146.61	13,194	39.39	11,511	34.37	14,961	44.67	4,086	12.20	716	2.14	1,800	5.37	2,597	7.75	240	0.72
1999	42,936	126.15	11,537	33.90	8,654	25.43	13,935	40.94	4,032	11.85	599	1.76	1,539	4.52	2,393	7.03	247	0.73
2000	40,276	116.81	11,171	32.40	7,966	23.10	12,240	35.50	4,356	12.63	615	1.78	1,497	4.34	2,157	6.26	274	0.79
2001	37,917	109.16	11,505	33.12	8,231	23.70	10,083	29.03	3,929	11.31	617	1.78	1,673	4.82	1,621	4.67	258	0.74
2002	38,651	114.11	11,807	34.86	9,418	27.80	9,198	27.16	4,089	12.07	627	1.85	1,796	5.30	1,446	4.27	270	0.80
2003	43,422	119.41	12,639	34.76	10,819	29.75	10,248	28.18	4,743	13.04	762	2.10	2,263	6.22	1,655	4.55	293	0.81
2004	46,798	126.82	12,741	34.53	11,929	32.33	11,276	30.56	5,085	13.78	759	2.06	2,688	7.28	1,943	5.27	377	1.02
2005	48,603	131.88	12,731	34.54	12,221	33.16	12,264	33.28	5,396	14.64	793	2.15	2,738	7.43	2,108	5.72	352	0.96

* Population estimates are from the Demographic Research Unit, California Department of Finance.

** OTHER includes all offenses that do not fall under the Person, Property, or Drug types and any felon new admission with missing offense data.

*** This report reflects New Admissions ONLY. PVWNT's were inadvertently added to the totals for 2001, 2002 and 2003 and have since been removed.

FIGURE 5
FELON PAROLE VIOLATORS (PV) RETURNED TO PRISON
CALENDAR YEARS 1985 - 2005

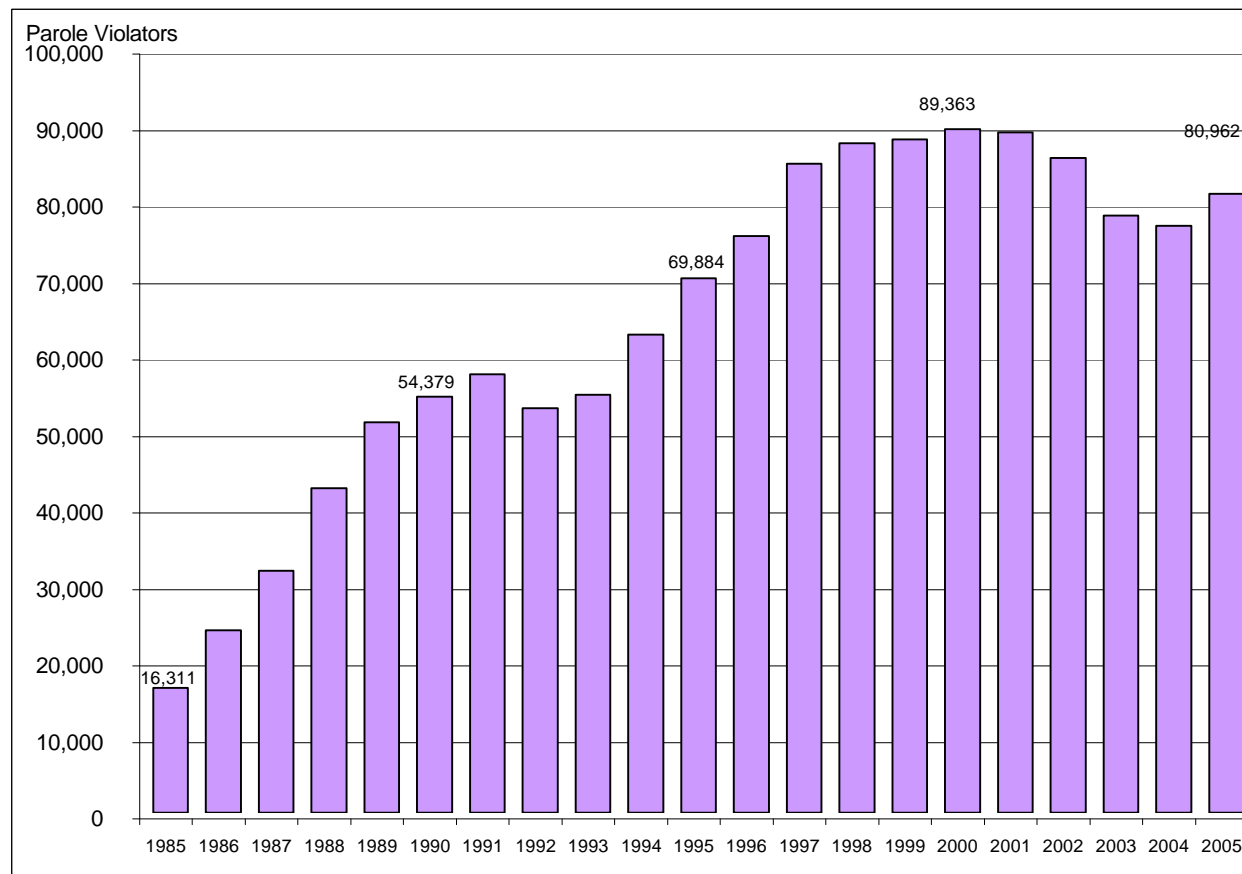


TABLE 5
FELON PAROLE VIOLATORS (PV) RETURNED TO PRISON*
BY SEX
CALENDAR YEARS 1985 - 2005

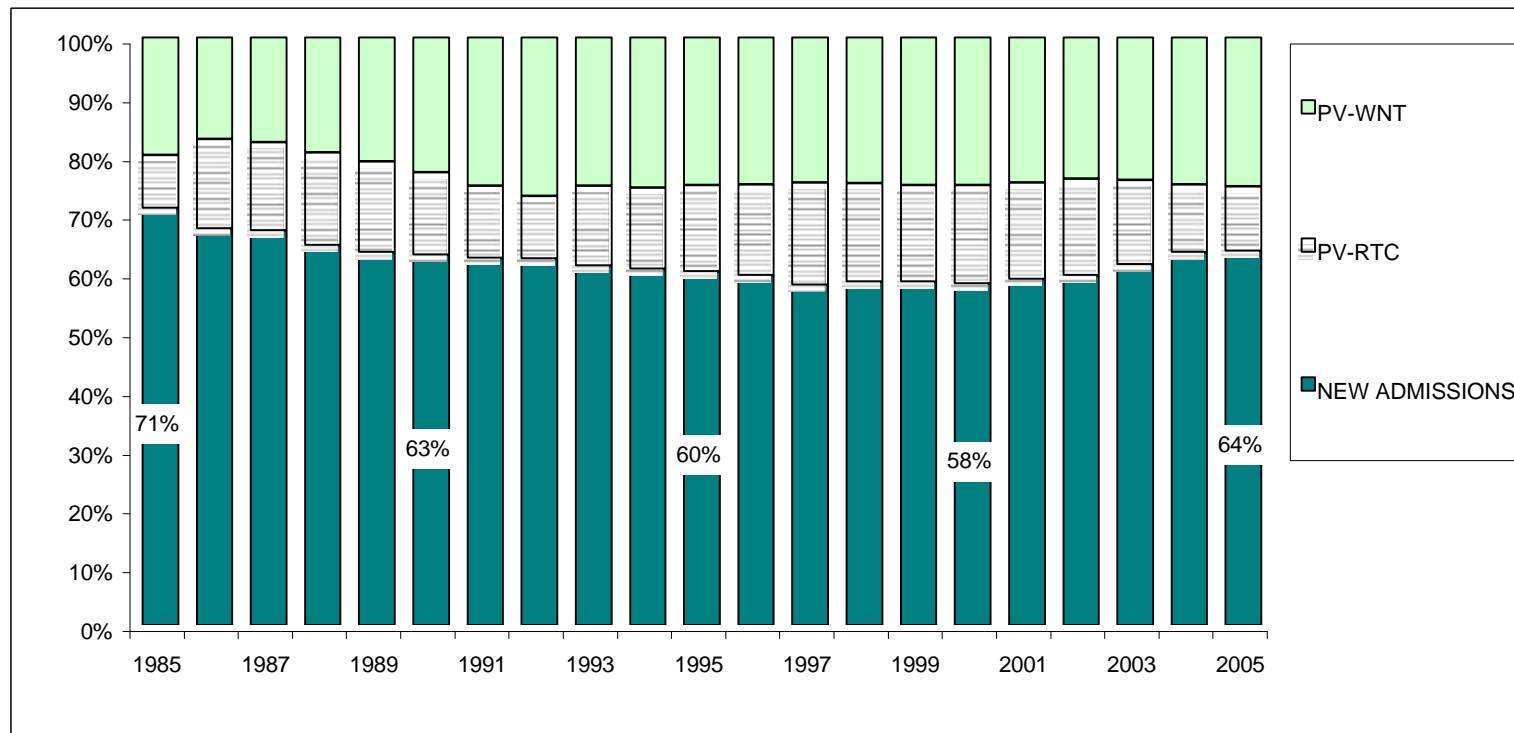
CALENDAR YEAR	TOTAL PVs	PV-RETURNED TO CUSTODY (PV-RTC)			PV-WITH NEW TERM (PV-WNT)		
		TOTAL	MALE	FEMALE	TOTAL	MALE	FEMALE
1985	16,311	11,269	10,636	633	5,042	4,778	264
1986	23,849	18,059	16,910	1,149	5,790	5,433	357
1987	31,597	25,207	23,495	1,712	6,390	6,042	348
1988	42,424	34,014	31,664	2,350	8,410	7,919	491
1989	51,016	39,976	37,058	2,918	11,040	10,341	699
1990	54,379	40,309	37,214	3,095	14,070	13,194	876
1991	57,344	41,334	38,023	3,311	16,010	14,994	1,016
1992	52,871	34,932	32,260	2,672	17,939	16,862	1,077
1993	54,681	35,531	32,743	2,788	19,150	17,935	1,215
1994	62,480	45,471	41,690	3,781	17,009	15,767	1,242
1995	69,884	52,430	47,999	4,431	17,454	16,217	1,237
1996	75,419	57,984	52,759	5,225	17,435	16,057	1,378
1997	84,875	67,380	61,428	5,952	17,495	16,091	1,404
1998	87,539	70,245	63,908	6,337	17,294	15,745	1,549
1999	88,040	70,969	64,544	6,425	17,071	15,479	1,592
2000	89,363	73,352	66,753	6,599	16,011	14,568	1,443
2001	88,972	74,444	68,167	6,277	14,528	13,374	1,154
2002	85,574	71,246	65,345	5,901	14,328	13,203	1,125
2003	78,053	62,377	57,385	4,992	15,676	14,380	1,296
2004	76,725	58,902	54,331	4,571	17,823	16,291	1,532
2005	80,962	61,241	56,096	5,145	19,721	18,094	1,627

*Parole Violators include: PV-RTC (Parole Violators-Returned To Custody) who are parolees returned to prison for violating their parole conditions, parolees returned pending a parole revocation hearing, and parolees returned to SATCU (Substance Abuse Treatment Control Unit) without having their parole revoked. Parole Violators also include PV-WNT (Parole Violators-With New Term) who are parolees returned with a new felony court commitment to prison. * Offenders may be counted more than one time.

FIGURE 6

MALE FELON INSTITUTION POPULATION BY ADMISSION/RETURN STATUS

DECEMBER 31, 1985 - DECEMBER 31, 2005



Note: Percents used in the report may not add to totals due to independent rounding.

TABLE 6
FELON INSTITUTION POPULATION BY ADMISSION/RETURN STATUS*
BY SEX
December 31, 1985 - December 31, 2005

AS OF DECEMBER 31	MALE				FEMALE			
	POPULATION	NEW ADMISSIONS	PV-RTC	PV-WNT	POPULATION	NEW ADMISSIONS	PV-RTC	PV-WNT
		(%)	(%)	(%)		(%)	(%)	(%)
1985	45,761	71.0%	9.0%	20.0%	2,518	76.6%	9.3%	14.2%
1986	54,512	67.5%	15.2%	17.3%	3,213	71.4%	16.0%	12.6%
1987	61,105	67.1%	15.1%	17.8%	3,708	72.8%	15.3%	11.9%
1988	69,379	64.6%	15.8%	19.6%	4,401	69.4%	16.4%	14.2%
1989	78,911	63.4%	15.5%	21.1%	5,427	69.7%	15.6%	14.7%
1990	88,264	63.0%	14.0%	23.0%	5,858	68.7%	14.6%	16.6%
1991	92,837	62.5%	12.2%	25.3%	5,678	68.7%	12.2%	19.1%
1992	99,494	62.3%	10.7%	27.0%	5,973	68.9%	10.7%	20.4%
1993	108,828	61.9%	10.8%	27.2%	6,745	66.9%	12.0%	21.1%
1994	113,705	60.6%	13.8%	25.6%	7,379	64.1%	15.3%	20.7%
1995	122,969	60.2%	14.6%	25.2%	8,263	64.1%	16.7%	19.2%
1996	132,986	59.5%	15.5%	25.1%	9,395	63.3%	17.6%	19.0%
1997	141,944	57.8%	17.4%	24.7%	10,281	61.6%	20.0%	18.3%
1998	145,997	58.4%	16.8%	24.8%	10,863	61.3%	19.9%	18.8%
1999	147,555	58.3%	16.5%	25.2%	10,653	60.4%	19.6%	20.0%
2000	147,690	58.1%	16.7%	25.2%	10,427	59.7%	20.5%	19.8%
2001	147,690	58.8%	16.5%	24.7%	9,375	62.9%	18.8%	18.2%
2002	145,662	59.4%	16.5%	24.1%	9,644	62.1%	20.0%	17.9%
2003	150,613	61.4%	14.3%	24.3%	9,890	64.7%	17.2%	18.1%
2004	151,681	63.4%	11.6%	25.0%	10,671	68.2%	13.2%	18.6%
2005	155,313	63.6%	11.0%	25.4%	11,076	68.3%	13.2%	18.5%

Note: Parole Violators include PV-RTC (Parole Violators-Returned To Custody) who are parolees returned to prison for violating their parole conditions, parolees returned pending a parole revocation hearing, and parolees returned to SATCU (Substance Abuse Treatment Control Unit) without having their parole revoked. Parole violators also include PV-WNT (Parole Violators-With New Term) who are parolees returned with a new felony court commitment to prison. New admissions are inmates who have not yet been paroled.

* Offenders may be counted more than one time.

Note: Percents used in the report may not add to totals due to independent rounding.

FIGURE 7

**FELON PAROLE AND CIVIL NARCOTIC ADDICT (CNA) OUTPATIENT POPULATION
SUPERVISED IN CALIFORNIA
DECEMBER 31, 1985 - DECEMBER 31, 2005**

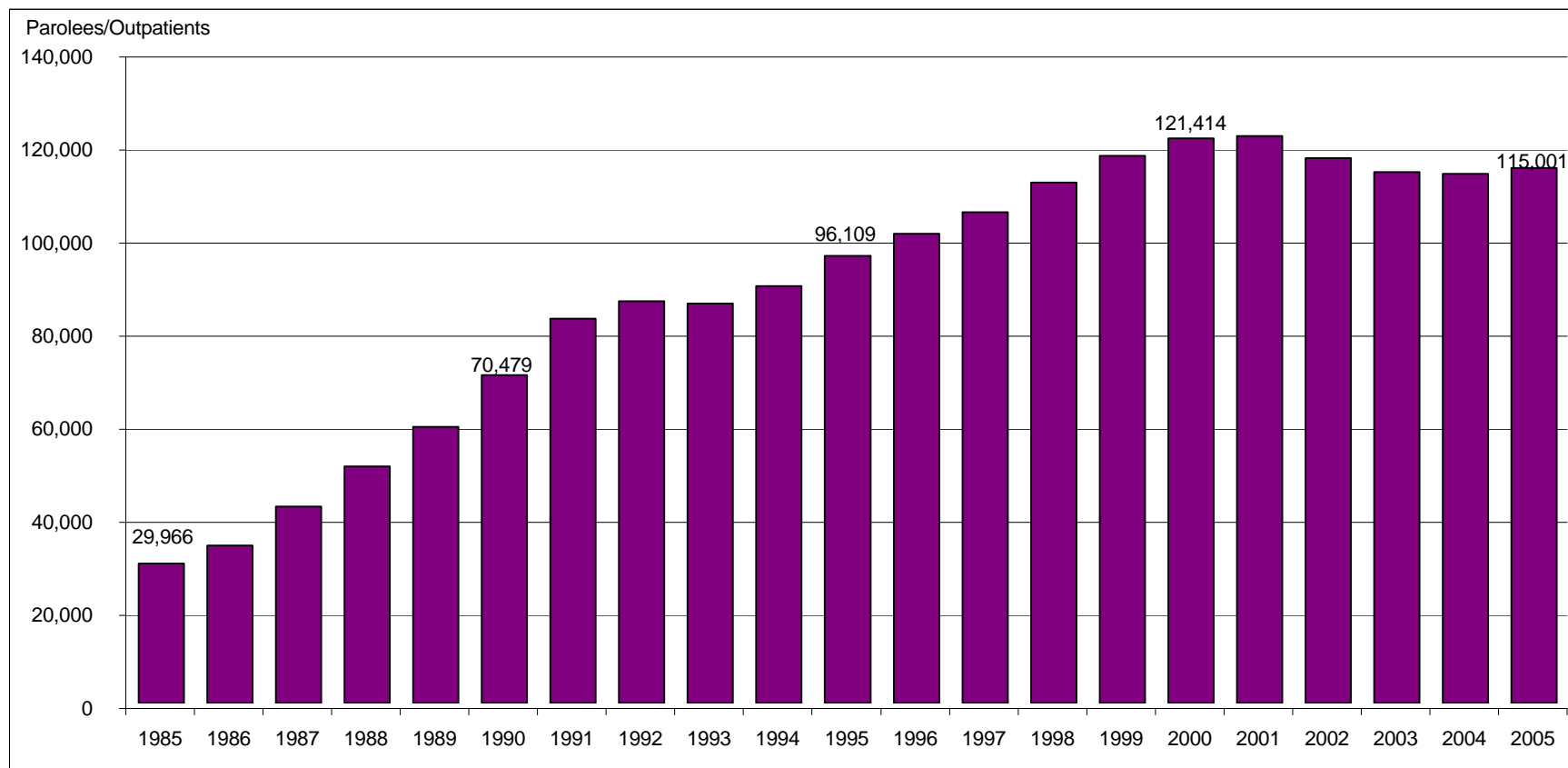


TABLE 7
FELON PAROLE AND CIVIL NARCOTIC ADDICT (CNA) OUTPATIENT POPULATION**
SUPERVISED IN CALIFORNIA
BY SEX
DECEMBER 31, 1985 - DECEMBER 31, 2005

AS OF DECEMBER 31	TOTAL MALE AND FEMALE				MALE			FEMALE		
	TOTAL POPULATION	CHANGE IN POPULATION	TOTAL FELON* PAROLEES	TOTAL CNA OUTPATIENT	TOTAL	FELON* PAROLEES	CNA OUTPATIENT	TOTAL	FELON* PAROLEES	CNA OUTPATIENT
1985	29,966	3,771	29,061	905	27,664	26,990	674	2,302	2,071	231
1986	33,872	3,906	32,646	1,226	31,087	30,193	894	2,785	2,453	332
1987	42,298	8,426	40,894	1,404	38,650	37,598	1,052	3,648	3,296	352
1988	50,832	8,534	49,138	1,694	46,474	45,212	1,262	4,358	3,926	432
1989	59,313	8,481	57,236	2,077	53,964	52,418	1,546	5,349	4,818	531
1990	70,479	11,166	67,661	2,818	63,744	61,616	2,128	6,735	6,045	690
1991	82,603	12,124	79,353	3,250	74,243	71,805	2,438	8,360	7,548	812
1992	86,389	3,786	82,997	3,392	77,723	75,176	2,547	8,666	7,821	845
1993	85,886	-503	81,778	4,108	77,573	74,480	3,093	8,313	7,298	1,015
1994	89,609	3,723	85,569	4,040	81,360	78,247	3,113	8,249	7,322	927
1995	96,109	6,500	91,879	4,230	87,132	83,783	3,349	8,977	8,096	881
1996	100,935	4,826	97,056	3,879	91,180	88,198	2,982	9,755	8,858	897
1997	105,449	4,514	102,201	3,248	94,832	92,418	2,414	10,617	9,783	834
1998	111,875	6,426	108,929	2,946	100,356	98,113	2,243	11,519	10,816	703
1999	117,612	5,737	115,071	2,541	105,055	103,161	1,894	12,557	11,910	647
2000	121,414	3,802	118,673	2,741	108,262	106,178	2,084	13,152	12,495	657
2001	121,820	406	119,081	2,739	108,133	106,110	2,023	13,687	12,971	716
2002	117,138	-4,682	114,580	2,558	104,296	102,327	1,969	12,842	12,253	589
2003	114,136	-3,002	111,809	2,327	101,846	100,050	1,796	12,290	11,759	531
2004	113,768	-368	111,719	2,049	101,574	100,016	1,558	12,194	11,703	491
2005	115,001	1,233	113,199	1,802	102,500	101,132	1,368	12,501	12,067	434

*The felon count includes felon parolees who were released to parole from California institutions and commitments from other state and federal institutions who were paroled to California. ** Offenders may be counted more than one time.

FIGURE 8

FELON RELEASES TO PAROLE
CALENDAR YEARS 1985 - 2005

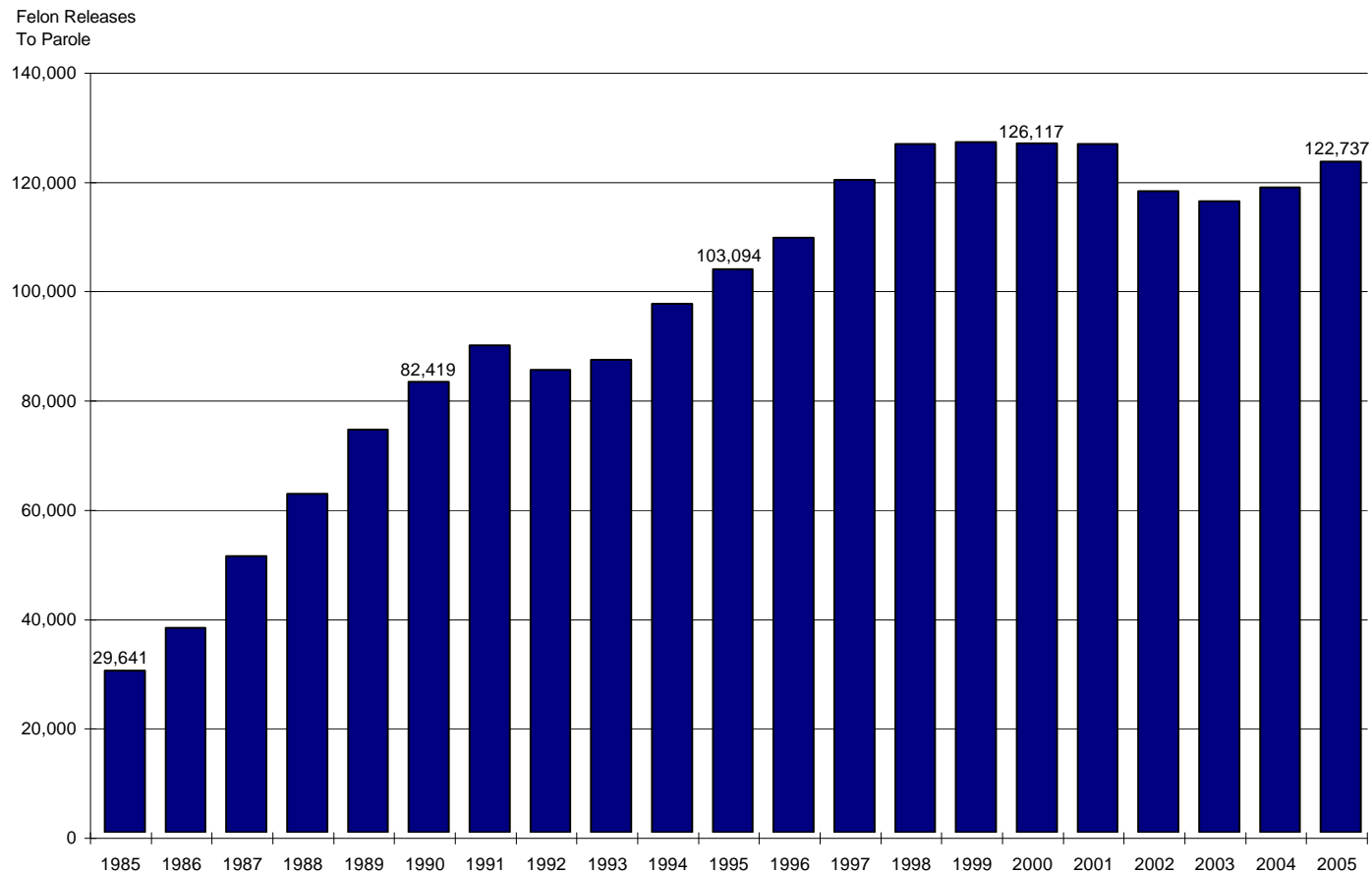


TABLE 8
FELON RELEASES TO PAROLE
BY SEX
CALENDAR YEARS 1985 - 2005

CALENDAR YEAR	RELEASES TO PAROLE		TOTAL RELEASES TO PAROLE	CHANGE IN RELEASES TO PAROLE	
	MALE	FEMALE		NUMBER	PERCENT
1985	27,571	2,070	29,641	4,930	20%
1986	34,740	2,734	37,474	7,833	26%
1987	46,631	3,881	50,512	13,038	35%
1988	57,407	4,570	61,977	11,465	23%
1989	67,795	5,868	73,663	11,686	19%
1990	75,428	6,991	82,419	8,756	12%
1991	81,324	7,800	89,124	6,705	8%
1992	77,648	6,926	84,574	-4,550	-5%
1993	79,389	7,085	86,474	1,900	2%
1994	88,466	8,207	96,673	10,199	12%
1995	93,899	9,195	103,094	6,421	7%
1996	98,525	10,272	108,797	5,703	6%
1997	107,938	11,487	119,425	10,628	10%
1998	113,528	12,384	125,912	6,487	5%
1999	113,454	12,811	126,265	353	0%
2000	113,550	12,567	126,117	-148	0%
2001	113,610	12,381	125,991	-126	0%
2002	106,464	10,846	117,310	-8,681	-7%
2003	105,037	10,387	115,424	-1,886	-2%
2004	106,953	11,065	118,018	2,594	2%
2005	110,556	12,181	122,737	4,719	4%

FIGURE 9
AVERAGE (MEDIAN) TIME SERVED ON PRISON SENTENCE
FELONS FIRST RELEASED TO PAROLE
BY SEX
CALENDAR YEARS 1985 - 2005

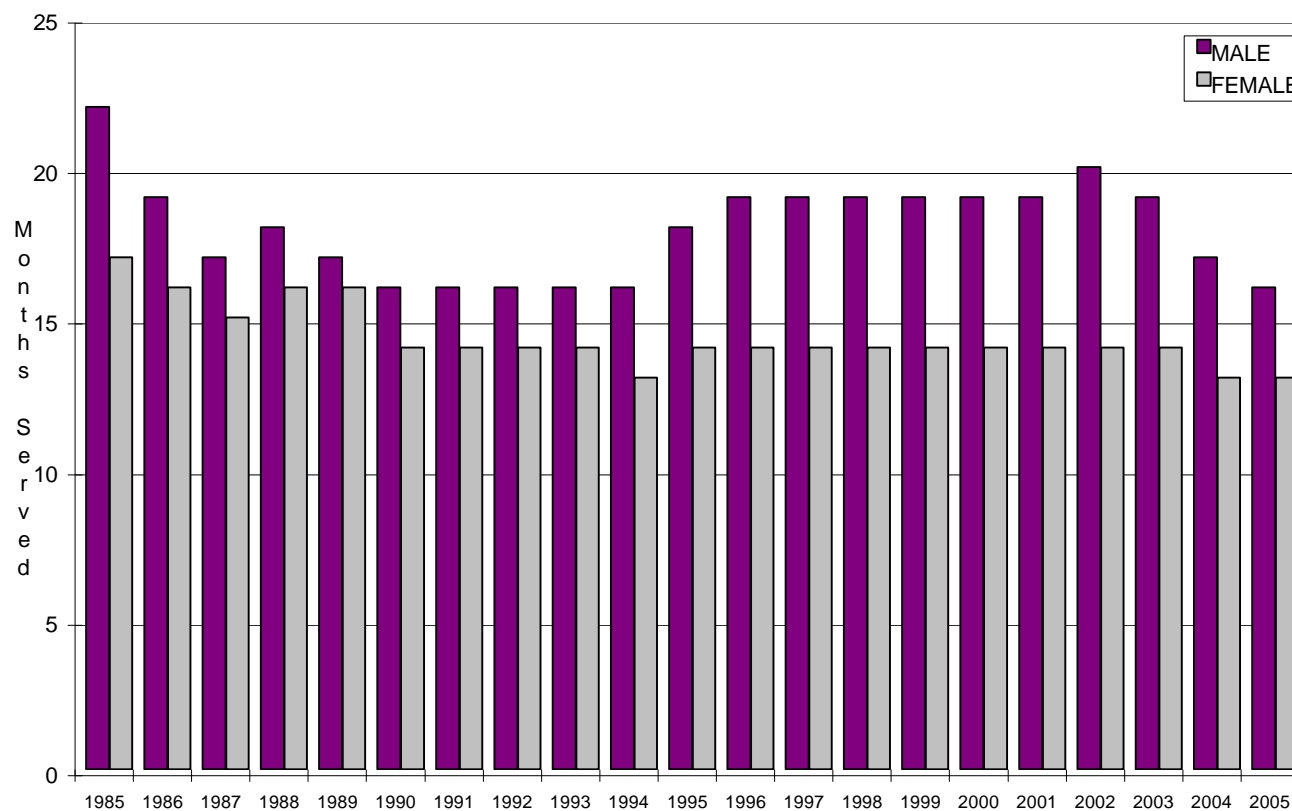


TABLE 9
AVERAGE (MEDIAN) TIME SERVED ON PRISON SENTENCE
FELONS FIRST RELEASED TO PAROLE
BY SEX
CALENDAR YEARS 1985 - 2005

CALENDAR YEAR	TOTAL FELONS FIRST RELEASED TO PAROLE	MALE		FEMALE	
		TOTAL RELEASES	TIME SERVED* (months)	TOTAL RELEASES	TIME SERVED* (months)
1985	18,407	17,012	22	1,395	17
1986	23,898	22,019	19	1,879	16
1987	28,134	25,834	17	2,300	15
1988	31,883	29,376	18	2,507	16
1989	37,224	34,057	17	3,167	16
1990	44,421	40,354	16	4,067	14
1991	49,204	44,724	16	4,480	14
1992	50,911	46,567	16	4,344	14
1993	54,213	49,618	16	4,595	14
1994	58,044	53,102	16	4,942	13
1995	56,861	51,630	18	5,231	14
1996	57,520	51,956	19	5,564	14
1997	60,329	54,146	19	6,183	14
1998	60,500	53,994	19	6,506	14
1999	59,553	52,958	19	6,595	14
2000	57,940	51,626	19	6,314	14
2001	55,479	49,412	19	6,067	14
2002	50,927	45,712	20	5,215	14
2003	53,520	48,044	19	5,476	14
2004	60,553	53,938	17	6,615	13
2005	64,371	57,062	16	7,309	13

* Time served includes time spent in custody prior to reception by CDC and time served in a CDC institution.

Note: First releases to parole include new admissions and parole violators with new terms.

FIGURE 10

INSTITUTION AND CAMP DESIGN BED CAPACITY AND POPULATION
 JUNE 30, 1985 - JUNE 30, 2005

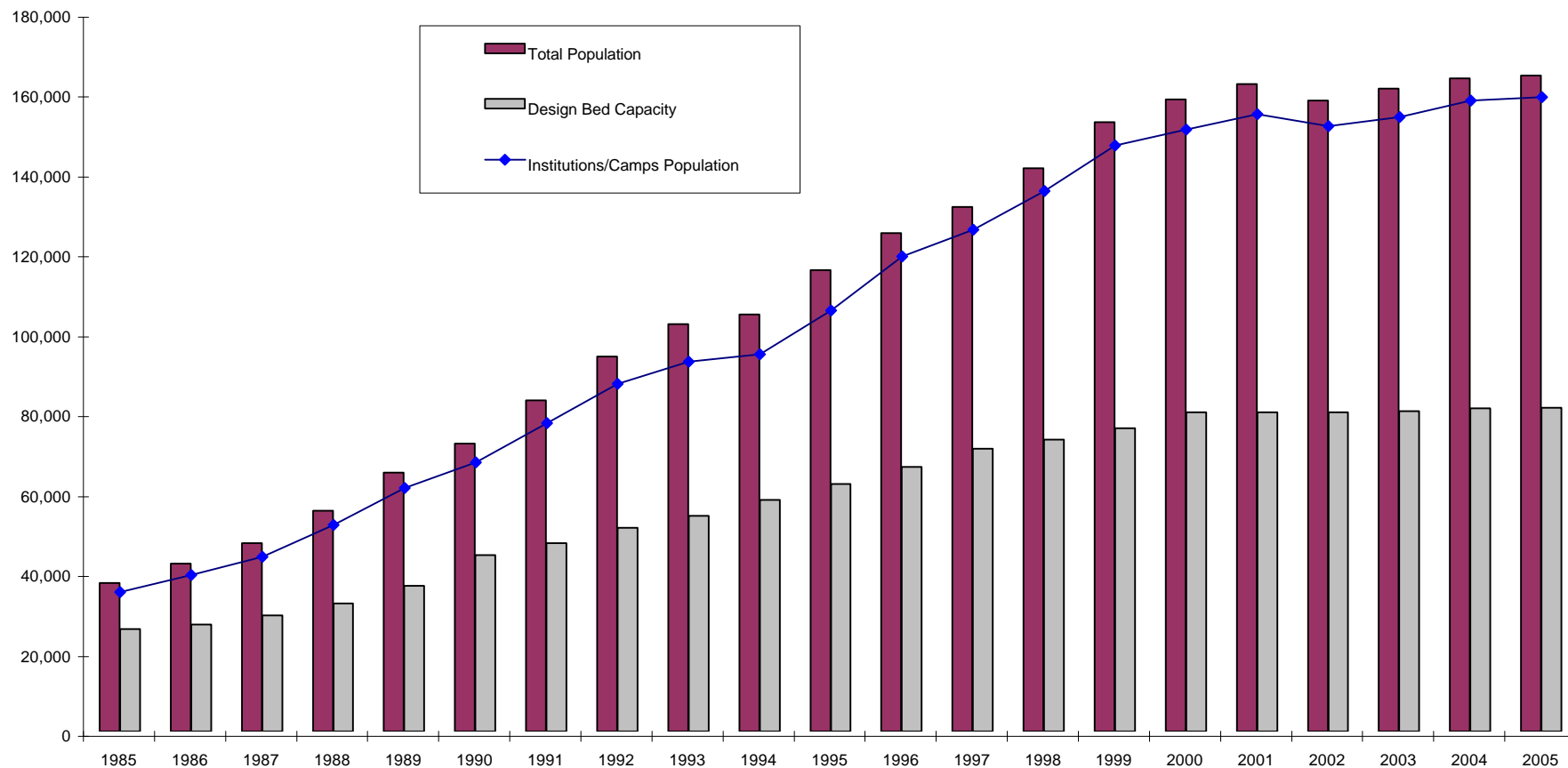


TABLE 10

**INSTITUTION AND CAMP DESIGN BED CAPACITY* AND POPULATION
RATE OF OCCUPANCY
JUNE 30, 1985 - JUNE 30, 2005**

AS OF JUNE 30	TOTAL POPULATION			COMMUNITY CORRECTIONAL CENTERS AND STATE HOSPITAL			INSTITUTIONS AND CAMPS								
							INSTITUTIONS AND CAMPS POPULATION			DESIGN BED CAPACITY			RATE OF OCCUPANCY** INSTITUTIONS/CAMPS ONLY		
	TOTAL	MALE	FEMALE	TOTAL	MALE	FEMALE	TOTAL	MALE	FEMALE	TOTAL	MALE	FEMALE	TOTAL	MALE	FEMALE
1985	47,082	44,429	2,653	1,554	1,417	137	45,528	43,012	2,516	29,042	27,536	1,506	156.8%	156.2%	167.1%
1986	55,238	52,015	3,223	1,618	1,473	145	53,620	50,542	3,078	32,097	30,491	1,606	167.1%	165.8%	191.7%
1987	64,737	60,750	3,987	1,788	1,620	168	62,949	59,130	3,819	36,465	34,619	1,846	172.6%	170.8%	206.9%
1988	72,121	67,650	4,471	2,426	2,185	241	69,695	65,465	4,230	44,124	41,702	2,422	158.0%	157.0%	174.6%
1989	82,872	77,327	5,545	3,023	2,733	290	79,849	74,594	5,255	47,120	44,358	2,762	169.5%	168.2%	190.3%
1990	93,810	87,435	6,375	3,405	2,998	407	90,405	84,437	5,968	51,013	47,735	3,278	177.2%	176.9%	182.1%
1991	101,995	95,340	6,655	6,065	5,329	736	95,930	90,011	5,919	54,042	49,796	4,246	177.5%	180.8%	139.4%
1992	104,352	98,008	6,344	5,966	5,539	427	98,386	92,469	5,917	57,986	53,740	4,246	169.7%	172.1%	139.4%
1993	115,534	108,302	7,232	5,880	5,428	452	109,654	102,874	6,780	61,983	57,737	4,246	176.9%	178.2%	159.7%
1994	124,813	116,879	7,934	5,845	5,398	447	118,968	111,481	7,487	66,183	61,937	4,246	179.8%	180.0%	176.3%
1995	131,342	122,514	8,828	5,757	5,326	431	125,585	117,188	8,397	70,717	65,515	5,202	177.6%	178.9%	161.4%
1996	141,017	131,273	9,744	5,723	5,276	447	135,294	125,997	9,297	73,121	66,891	6,230	185.0%	188.4%	149.2%
1997	152,506	141,669	10,837	5,850	5,404	446	146,656	136,265	10,391	75,952	69,722	6,230	193.1%	195.4%	166.8%
1998	158,207	147,001	11,206	7,476	7,013	463	150,731	139,988	10,743	79,877	73,647	6,230	188.7%	190.1%	172.4%
1999	162,064	150,581	11,483	7,624	7,210	414	154,440	143,371	11,069	79,873	73,643	6,230	193.4%	194.7%	177.7%
2000	162,000	150,793	11,207	7,986	7,522	464	154,014	143,271	10,743	80,272	74,042	6,230	191.9%	193.5%	172.4%
2001	161,497	150,785	10,712	7,848	7,392	456	153,649	143,393	10,256	80,467	74,237	6,230	190.9%	193.2%	164.6%
2002	157,979	148,153	9,826	6,400	6,080	320	151,579	142,073	9,506	79,957	73,727	6,230	189.6%	192.7%	152.6%
2003	160,931	150,851	10,080	7,148	6,681	467	153,783	144,170	9,613	80,187	74,357	5,830	191.8%	193.9%	164.9%
2004	163,500	152,859	10,641	5,605	5,146	459	157,895	147,713	10,182	80,890	75,060	5,830	195.2%	196.8%	174.6%
2005	164,179	153,323	10,856	5,342	4,855	487	158,837	148,468	10,369	81,008	75,178	5,830	196.1%	197.5%	177.9%

* Design bed capacity is the number of inmates a facility was originally designed to house. Increases or decreases indicate beds lost or gained due to conversions, additions, or deactivation.

**Rate of occupancy = population divided by number of design beds multiplied by 100.