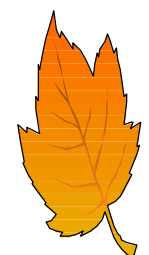




Fall 2001

**Population
Projections**

2002 - 2007



California
Department of Corrections

CALIFORNIA DEPARTMENT OF CORRECTIONS

TERESA ROCHA

Director (A)

REGINA STEPHENS

*Chief Deputy Director (A)
Support Services*

E. A. MITCHELL

*Interim Assistant Director
Office of Correctional Planning*

ARTHUR CHUNG

*Chief (A)
Offender Information Services Branch*

PAMELA HOFFMAN

*Chief (A)
Estimates and Statistical Analysis Section*

JACK LEONARD

Operations Research Specialist III

JACQUI CODER

*Research Manager I (A)
Population Projections Unit*



Jay Atkinson

Assoc. Gov. Program Analyst

Mara Moore

Staff Services Analyst

Shelley Buttler

Assistant ISA

Nancy A. Peters

Office Technician

ACKNOWLEDGMENTS

Although the Estimates and Statistical Analysis Section is responsible for the semiannual publication of the Population Projections, others in the Department of Corrections made significant contributions that are greatly appreciated. Among those involved in the projections were (in alphabetical order) the:

- Board of Prison Terms
- Information Systems Division
- Institutions Division
- Office of Budget Management
- Parole and Community Services Division

TABLE OF CONTENTS

PAGE

I. INTRODUCTION----- 1

A. Factors Affecting Population----- 3

B. Comparison of Fall 2001 with Spring 2001 Projections----- 4

II. PREMISES----- 7

C. Felon Admissions ----- 9

D. Significant Chaptered Legislation and Initiatives -----10

E. The Work Incentive Program (WIP) -----11

F. Court Sentences -----11

G. Placement Need Projections -----12

H. Parole Violators -----12

I. Felon Parole Population -----13

III. FALL 2001 POPULATION PROJECTIONS----- 17

J. Six-Year Population Projections-----19

K. Two-Year Institution Population and Placement Needs Projections -----23

L. Two-Year Parole and Outpatient Population Projections-----33

I. INTRODUCTION

INTRODUCTION

This document contains the California Department of Corrections (CDC) projections of institution, parole and outpatient populations for Fiscal Years (FY) 2001-02 through 2006-07. The projections are based upon the most current available data and existing law.

The projections incorporate the expected impact of Proposition 36, the Substance Abuse and Crime Act of 2000, which was passed on November 7, 2000, and became effective July 1, 2001 (See Section II.D.1).

A. Factors Affecting Population

- The CDC institution population on June 30, 2001, was 161,497, which was 300 less than expected. The population decreased by 32 over the Calendar Year (CY) 2000, compared to previous increases of 1,124 (CY 1999) and 4,287 (CY 1998). Since December 31, 2000, the institution population has increased by 842.
- During the years 1980-1989, the institution population experienced an annual compounded growth of 14.5 percent. This compares to a growth of only 6.3 percent during 1990-1999. The slower prison growth is due to a decrease or slowing of intake from court, somewhat offset by an increase in time served.
- Since January 1, 2000, population growth has continued to slow. The decade to date annual growth is currently only 0.03 percent.

B. Comparison of Fall 2001 with Spring 2001 Projections

1. Institution Population

In the Spring 2001 forecast, the total institution population was expected to be 161,797 by June 30, 2001, 300 higher than the actual population. This difference is due primarily to fewer new court admissions and more releases to parole than expected.

Table A

Comparison of Fall 2001 with Spring 2001 Projections
Institution Population¹
June 30, 2001 through June 30, 2007

<u>Year End June 30</u>	<u>Fall 2001 Projections</u>	<u>Spring 2001 Projections</u>	<u>Difference</u>
2001	161,497 *	161,797	-300
2002	156,409	157,660	-1,251
2003	155,721	158,787	-3,066
2004	156,337	161,211	-4,874
2005	158,429	164,333	-5,904
2006	161,159	168,010	-6,851
2007	164,623	---	---

*Actual Population

The Fall 2001 Projection for the institution population is lower than forecast in the Spring 2001 Projection throughout the projection period. This is the result of a decrease in new admissions from court, returns from parole and the expected impact of Proposition 36. The prison population is expected to be 156,409 by June 30, 2002, 1,251 lower than the Spring Projection.

We are forecasting the population on June 30, 2003 to be 155,721, which is 3,066 lower than the Spring 2001 Projection. This decrease is primarily attributable to an expected decrease in new admissions. This decrease is expected to continue through June 2007. By June 30, 2007 the population is expected to be 164,623.

The expected decrease in institution population due to the impact of Proposition 36 for the budget year (FY 2002/03) is 5,984. For FY 2006/07 the decrease is 7,719.

¹ The population of the institutions consists of felons, civil narcotic addicts, county diagnostic cases, Youth Authority wards, persons from other states, federal prisoners, and county prisoners held for safekeeping. Felons include individuals under supervision in community-based facilities (in contract and non-contract beds) and State hospitals, as well as those actually in prison.

2. Parole Population

In the Spring 2001 Projections, the parole population was expected to be 122,249 on June 30, 2001, which is 2,613 higher than the actual population for that date. This difference is due mainly to the continuing trend of decreased new admissions, increased discharges and more PV/RTCs than expected.

Table B

Comparison of Fall 2001 with Spring 2001 Projections
Parole and Outpatient Population
June 30, 2001 through June 30, 2007

<u>Year End</u> <u>June 30</u>	<u>Fall 2001</u> <u>Projections</u>	<u>Spring 2001</u> <u>Projections</u>	<u>Difference</u>
2001	119,636 *	121,249	-2,613
2002	120,523	126,149	-5,626
2003	116,811	123,754	-6,943
2004	112,301	120,170	-7,869
2005	108,667	118,554	-9,887
2006	106,882	115,763	-8,881
2007	104,999	---	---

*Actual Population

By June 30, 2002, the number of parolees and outpatients supervised in California is projected to be 120,523, a decrease of 5,626 from the previous projection. By June 30, 2003, the parole population is expected to be 116,811, which is 6,943 lower than projected in Spring 2001. This decrease is primarily due to an increase in direct discharges from parole. A steady decline in the parole population is then expected through June 30, 2007, at which time the parole population is expected to be 104,999.

3. Other Populations

The civil addict institution population was 2,071 on June 30, 2001, which is 157 lower than projected in Spring 2001. It is now estimated that the civil addict population will be 1,882 on June 30, 2002, which is 127 lower than the Spring Projections. By June 30, 2007, the population is expected to be 1,674. Similarly, the parole outpatient population increased more than anticipated, rising to 2,685 by June 30, 2001, which was 88 more than projected in the spring. It is now estimated that the parole outpatient population will be 2,567 on June 30, 2002, which is 224 lower than the Spring Projections. The parole outpatient population is expected to be 2,333 by June 30, 2007.

Figures 1 and 2 graphically display the Fall 2001 Projections for the institution and parole and outpatient populations. Figure 1 shows the actual and projected institution population, while Figure 2 shows the actual and projected California Supervised parole and outpatient populations. Both figures are for FY 1991-92 through 2006-07.

Figure 1
Total Institution Population
Actual and Projected
Fiscal Years 1991-92 through 2006-07

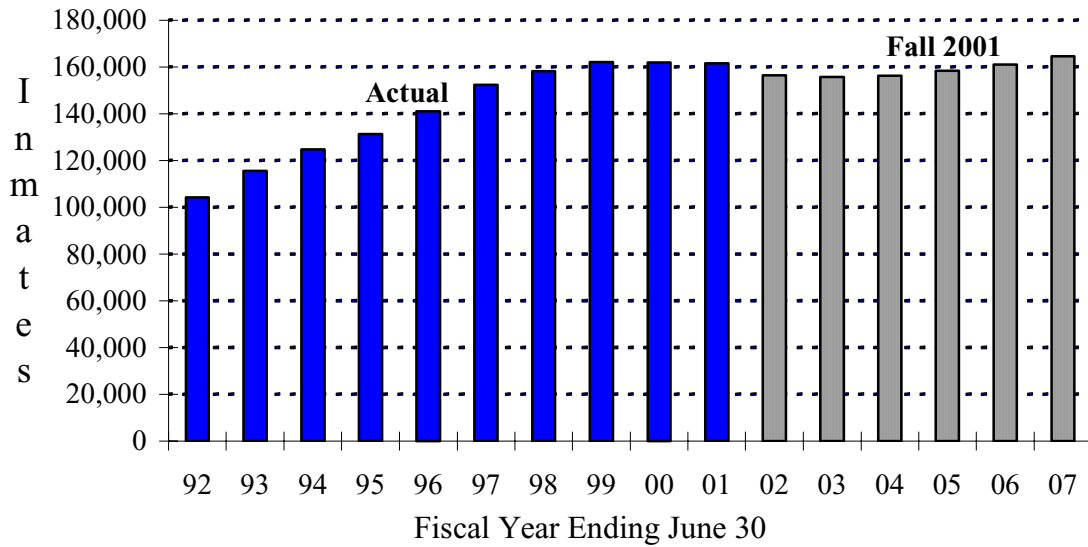
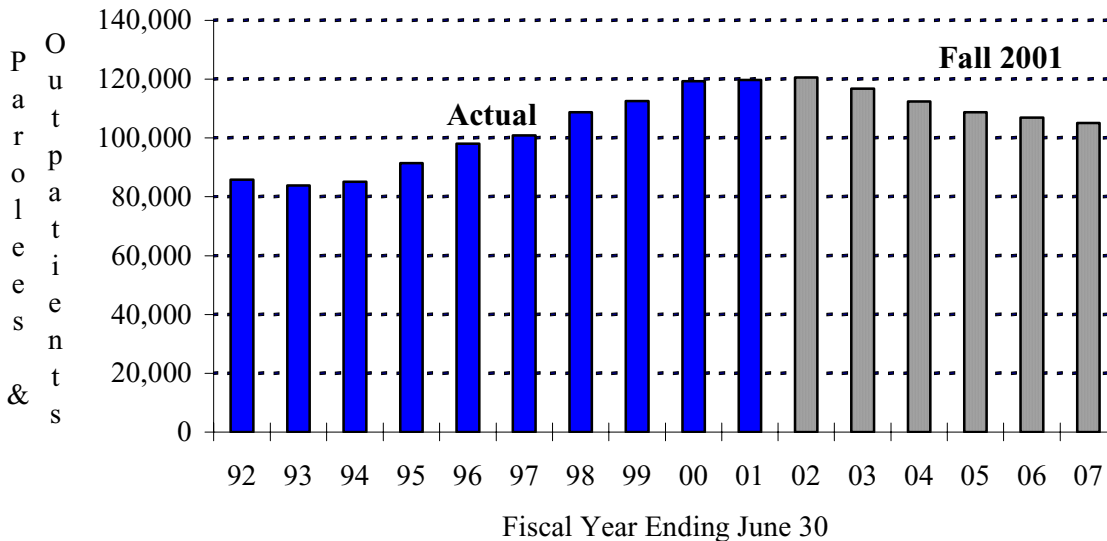
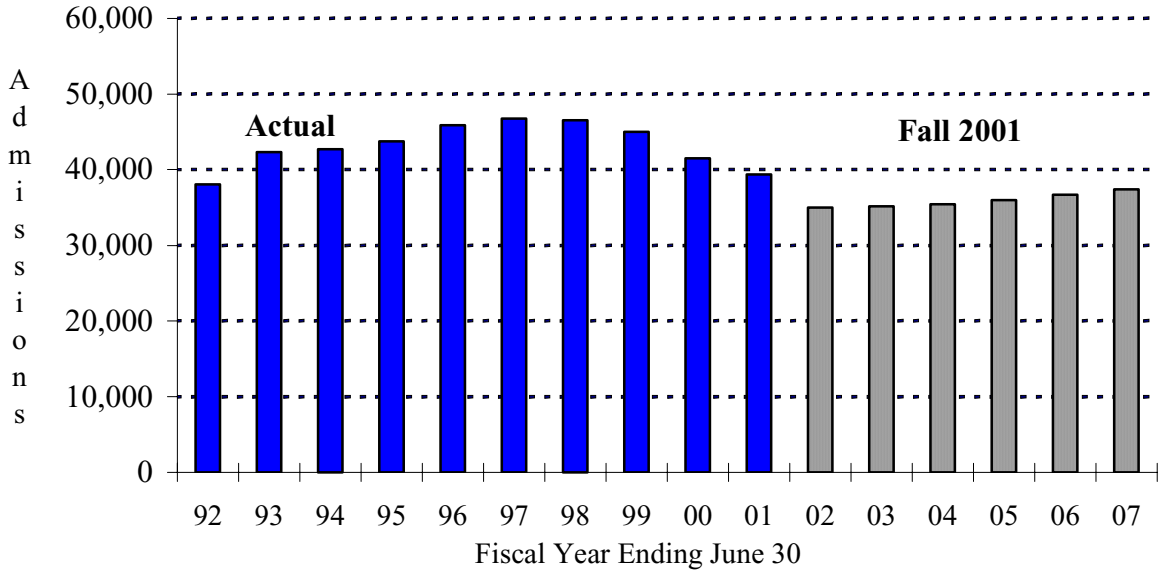


Figure 2
Total Parole and Outpatient Population
California Supervised, Actual and Projected
Fiscal Years 1991-92 through 2006-07



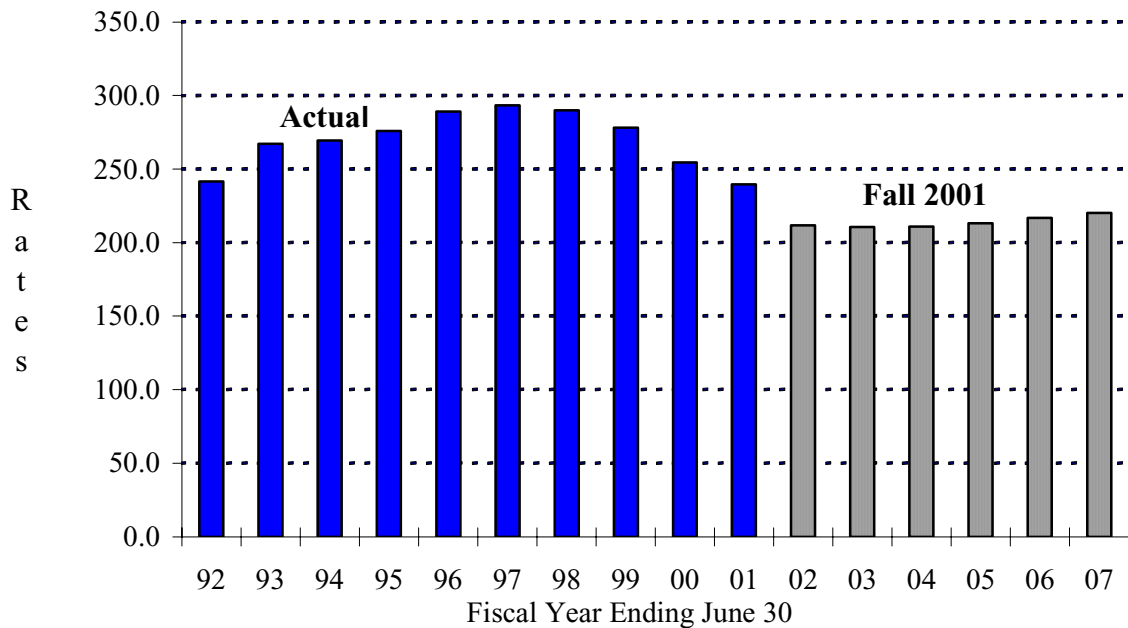
II. PREMISES

Figure 3
 Total Felon Admissions*
 Actual and Projected
 Fiscal Years 1991-92 through 2006-07



* Excluding CYA "M" Cases

Figure 4
 Total Felon Admission Rates
 Actual and Projected
 Fiscal Years 1991-92 through 2006-07



PREMISES

Figures 3 and 4 on the preceding page display the Fall 2001 Projections for felon admissions. Figure 3 shows the actual and projected felon admissions, while Figure 4 shows the actual and projected felon admissions rates per 100,000 California residents, aged 18-49. Both figures are for FY 1991-92 through FY 2006-07.

C. Felon Admissions

Table C, below, summarizes actual felon admissions to state prison from FY 1991-92 through FY 2000-01, while Table D displays the projected admissions for FY 2001-02 through FY 2006-07. Consistent with past practice, the admission rates displayed in Tables C and D are expressed as the number of felon admissions to prison from court per 100,000 California residents, aged 18-49.

Table C

Actual Total Felon Admissions to Prison
Fiscal Years 1991-92 through 2000-01

<u>Fiscal Year</u>	<u>Number of CDC Felon Admissions*</u>	<u>State Population Aged 18-49 (In Thousands)</u>	<u>Admission Rate**</u>
1991-92	38,037	15,737.4	241.7
1992-93	42,339	15,846.2	267.2
1993-94	42,713	15,850.2	269.5
1994-95	43,707	15,844.2	275.9
1995-96	45,876	15,860.8	289.2
1996-97	46,750	15,930.4	293.5
1997-98	46,512	16,039.1	290.0
1998-99	44,985	16,170.3	278.2
1999-00	41,472	16,303.3	254.4
2000-01	39,346	16,420.3	239.6

* Not including CYA "M" cases, other state/federal admissions, or direct admissions to parole

** Number of CDC felon admissions per 100,000 California state residents, aged 18-49

There has been an absolute decline in admissions for the last four fiscal years. The total admissions for FY 2000-01 were 39,346, down 5.1 percent from FY 1999-00. This continued decline in admissions has contributed significantly to a decline in total institution population.

In the last six months (January–June 2001), total admissions were 19,725. This is 4.5 percent lower than admissions for the same time period one year ago and 133 lower than projected in Spring 2001.

As shown in Table D, there is a significant change in the Fall 2001 felon admissions projection when compared to the Spring 2001 Projections. This difference can be attributed to changes in the overall trend of admissions and, to a lesser extent, changes in the Proposition 36 projection. Projected admissions (Fall 2001, Final) gradually increase over the next six years.

Admissions are projected based on current trends (Fall 2001, Baseline), estimated impact of legislation (Prop 36), seasonality, and projected state population aged 18-49.

Table D

Projected Total Felon Admissions¹
Fiscal Years 2001-02 through 2006-07

<u>Fiscal Year</u>	<u>Spring 2001</u>	<u>Fall 2001</u>			<u>Difference</u>		<u>Adm Rate</u>
		<u>Baseline</u>	<u>Prop 36 Impact</u>	<u>Final</u>	<u>Baseline</u>	<u>Final</u>	
2001-02	35,610	38,330	-3,302	35,028	-866	-582	211.7
2002-03	36,295	38,152	-3,006	35,146	-1,196	-1,149	210.8
2003-04	36,840	38,460	-3,031	35,429	-1,500	-1,411	211.1
2004-05	37,582	39,049	-3,084	35,965	-1,714	-1,617	213.2
2005-06	38,393	39,759	-3,072	36,687	-1,868	-1,706	216.9
2006-07	—	40,515	-3,108	37,407	—	—	220.2

¹ Without Incapacitation Adjustment.

D. Significant Chaptered Legislation and Initiatives

1. Proposition 36

The Fall 2001 Projections includes the projected impact of Proposition 36, The Substance Abuse and Crime Prevention Act of 2000, effective July 1, 2001, which was passed on November 7, 2000. This law provides that persons convicted of a non-violent drug possession offense shall receive probation and conditional drug treatment rather than commitment to prison. In addition, parole may not be suspended or revoked for commission of a non-violent drug possession offense. This will result in lower projected institution and parole populations.

2. Legislation

No legislative bills were chaptered since the Spring 2001 Projections

The following were included in the Spring 2001 Projections:

Statutes of 2001: Chapter 142, (AB 1300, Rod Pacheco & Oller), Chapter 322, (AB 1098, Romero), Chapter 673, (AB 1348, Runner), Chapter 627, (AB 1449, Florez & Margett), Chapter 919, (AB 1789, Zettel), Chapter 689, (AB 1808, Wayne), Chapter 324, (AB 1881, Gallegos), Chapter 669, (AB 2425, Corbett), Chapter 236, (AB 1899, Havice), Chapter 668, (AB 1961, Machado), Chapter 153, (AB 1988, Strickland), Chapter 400, (AB 1989, Dickerson), Chapter 620, (AB 1993, Romero), Chapter 634, (AB 2232, Oller), Chapter 276, (AB 2279, Dutra), Chapter 478, (AB 2523, Rod Pacheco), Chapter 546, (AB 2580, Cox), Chapter 692, (SB 370, Burton), Chapter 561, (SB 580, Lewis), Chapter 657, (SB 1784, Figueroa), Chapter 198, (SB 1802, Chesbro), Chapter 805, (SB 1865, Perata), Chapter 867, (SB 1988, Speier).

A description of the above legislation may be found in the Spring 2001 Projections Publication.

E. The Work Incentive Program (WIP)

This program allows eligible inmates to earn up to a six-month reduction per year in sentence length. The WIP applies to all felons who committed their offenses on or after January 1, 1983 and to those felons who committed their offenses before January 1, 1983 who chose to opt in. Approximately 73 percent of the June 30, 2000 eligible population were earning one-half sentence reduction, and participation is expected to continue at that level throughout the projection period. The Three Strikes Law limits credit earning to 20 percent for affected inmates. The Penal Code also limits persons who have been convicted of any violent felony to no more than 15 percent sentence reduction.

F. Court Sentences

As shown in Table E, on the following page, the mean sentence for felons steadily increased in the first few years after implementation of the Three Strikes Law in March 1994, and stabilized at about 54 months from 1997 through the present. The average work incentive credit steadily decreased since the Three Strikes Law, but has stabilized at about 12 months in the last four years. Anticipated time to serve has stabilized at about 35 months.

Table E

Average Sentence and Credits
For Felon New Admissions and PV-WNTs
(in months)

<u>Fiscal Year</u>	<u>Sentence</u> ¹	<u>Pre-confinement Credits</u>	<u>WIP Credits</u> ²	<u>Time to Serve</u>
1992-93	47.9	6.6	17.7	23.6
1993-94	47.5	6.4	17.6	23.5
1994-95	50.9	6.9	15.0	29.0
1995-96	54.0	7.1	12.9	34.0
1996-97	56.0	7.1	12.5	36.4
1997-98	54.3	6.7	12.4	35.2
1998-99	54.6	6.7	12.5	35.4
1999-00	54.4	6.8	12.6	35.0
2000-01	54.6	6.9	12.0	35.7

¹ Includes third-strike and other life commitments
² Work Incentive Program credits based on eligibility

G. Placement Need Projections

As in the Spring 2001 Projections, the Fall 2001 Projections of institution bed needs, by level, consider both inmate classification score level and administrative determinants, such as institutional security and public safety, as specified in Section 62010 of the California Department of Corrections’ Operations Manual. It is assumed that the male felon reception center population will fluctuate proportionately with the changes in male felon intake. Special housing projections assume a constant proportion of the number of inmates of each classification level in each of these categories over the projection period.

H. Parole Violators

For the six-month period January–June 2001, there were 34,763 male felon parole violators (PV-RTCs and PendRevs) returned to custody, 1,445 more than projected in Spring 2001. The corresponding return rate was 56.8, 2.9 higher than projected. The Fall 2001 Projections assume the PV-RTCs and PendRev rate will be higher than projected in the Spring 2001 Projections.

There were 7,166 male felon parole violators returned with new terms (PV-WNTs) for the January–June 2001 period, 170 less than projected in Spring 2001. The corresponding male felon PV-WNT rate was 11.7, only 0.2 lower than projected in Spring 2001. The Fall 2001 Projections assume the PV-WNT rate will be about the same as projected in the Spring 2001 Projections.

The graphs on the following pages illustrate actual and projected parole return numbers and rates. Figure 1 displays the actual number of male felon parole violator returns by quarter since June 1991. Figure 2 shows the male felon PV-RTC/PendRev rates by quarter from June 1991 to June 2007, while Figure 3 tracks the male felon PV-WNT rates.

I. Felon Parole Population

On June 30, 2001, the felon parole population was 115,628, which is 2,552 lower than projected in Spring 2001. Between January and June 2001, this population decreased by 1,749.

For the six-month period January to June 2001, there were 15,860 male felon parolees suspended to parolee-at-large (PAL) status, 1,113 more than projected in Spring 2001. The corresponding PAL rate was 30.4, 2.4 higher than projected. The Fall 2001 Projections assume that the male felon PAL rate will be slightly higher than projected in the Spring 2001 Projections.

There were 15,907 male felon parolees discharged from parole over the last six months. This was 1,372 more than projected in Spring 2001. The corresponding discharge rate was 26.1, 2.5 higher than projected. The Fall 2001 Projections assume that the male felon discharge rate will be slightly higher than projected in the Spring 2001 Projections.

Figure 5
Male Felon Parole Violator Returns
June 1991 through June 2001

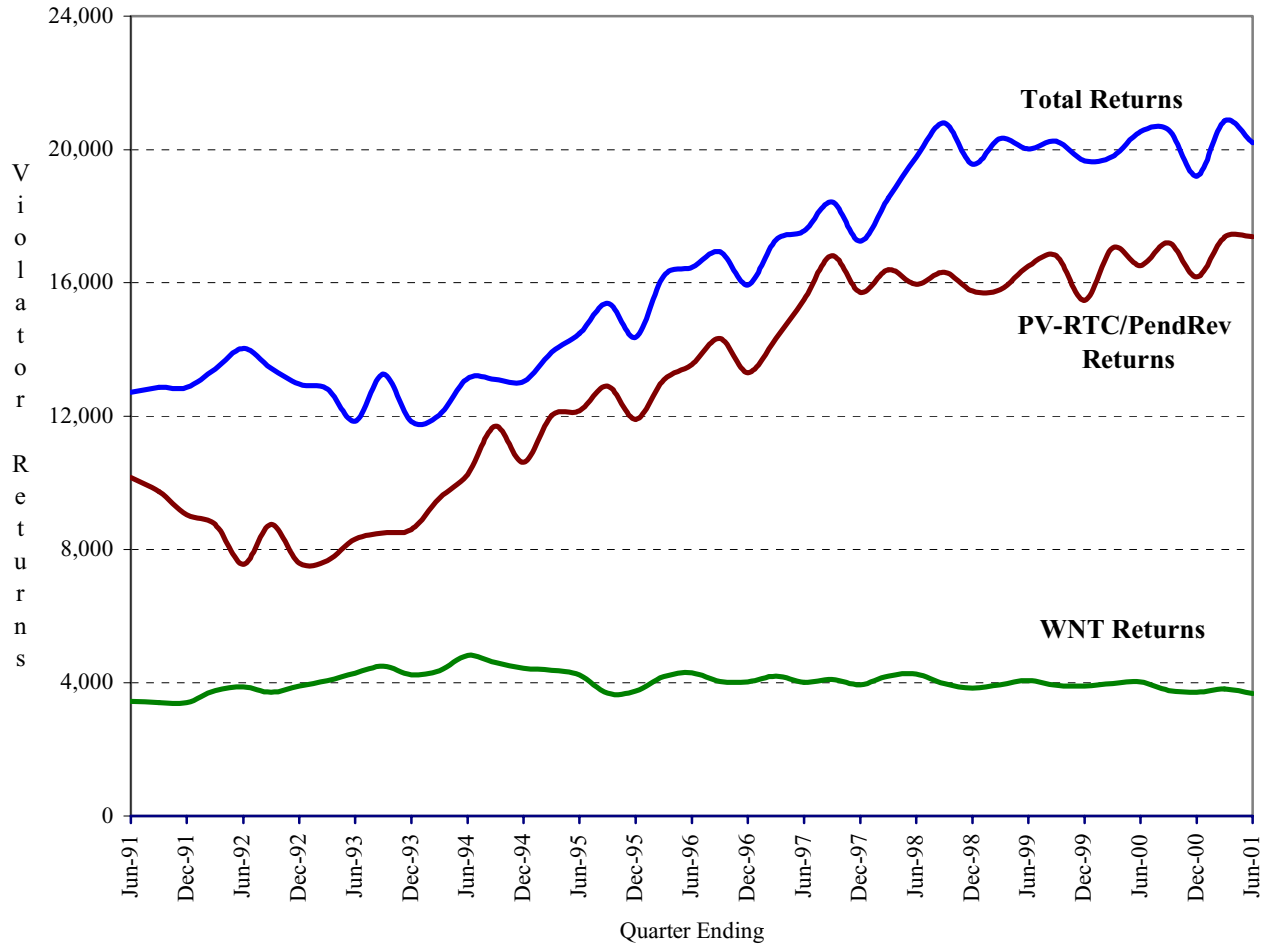
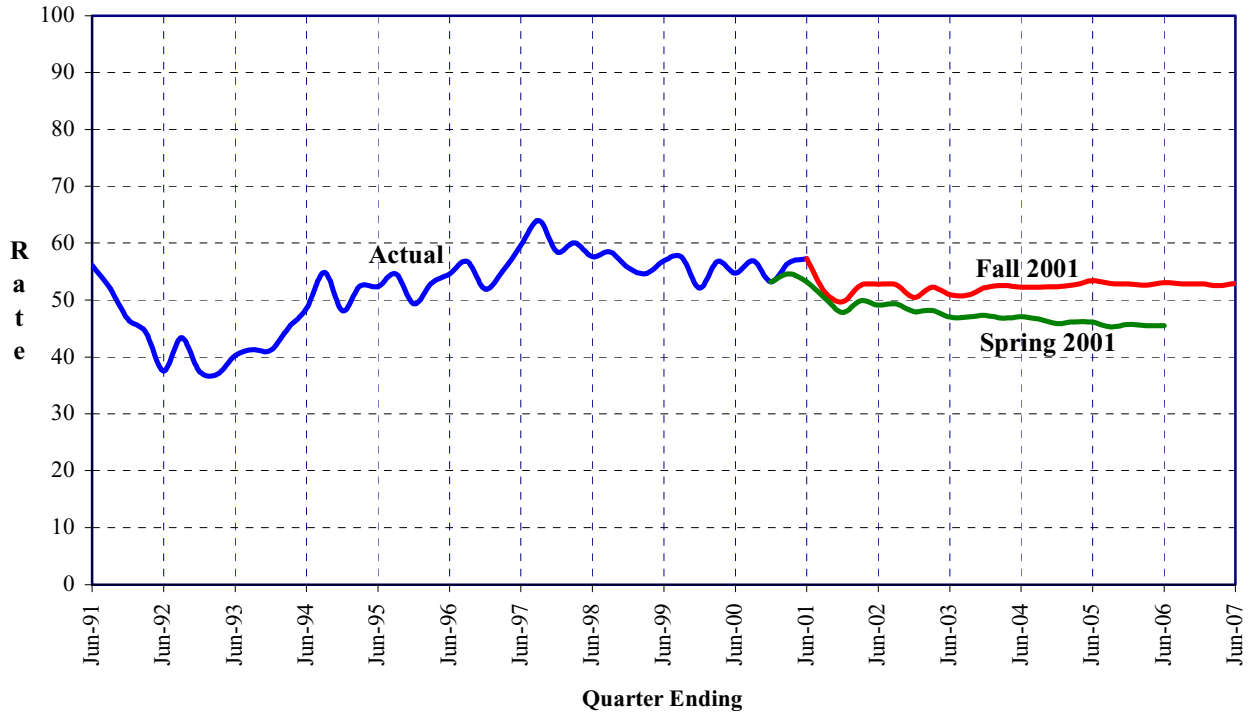
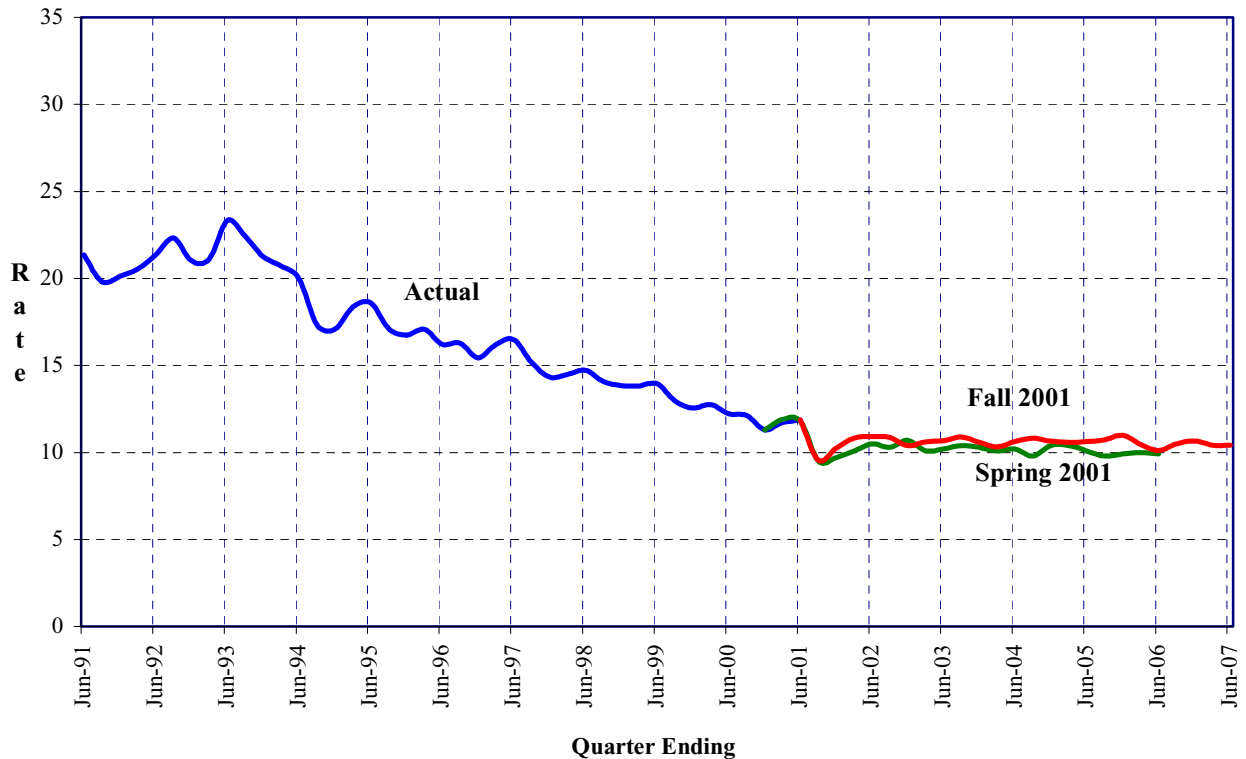


Figure 6
Male Felon PV-RTC/PendRev* Rates
June 1991 through June 2001



*PV-RTC/PendRevs are parole violators returned to custody or pending revocation.

Figure 7
Male Felon PV-WNT* Rates
June 1991 through June 2001



*PV-WNTs are parole violators returned with a new term.

III. FALL 2001 POPULATION PROJECTIONS

The Fall 2001 Projections are summarized in Tables 1 and 2, and are presented in greater detail in Tables 3 through 16. Tables 3 and 4 present the quarterly institution populations, while Tables 5 and 6 present detailed projections by inmate placement needs. Tables 7 through 10 project the movement of institution populations (including civil narcotic addicts), and Tables 11 through 16 present detailed projections of the parole and outpatient population.

J. Six-Year Population Projections

Tables 1-2

Fiscal Years 2001-02 through 2006-07

Fall 2001 Projections

Table 1
 Institution Population
 June 30, 1992 through June 30, 2007

<u>As of June 30</u>	<u>Total</u>	<u>Total Males</u>	<u>Male Felons</u>	<u>Male Addicts</u>	<u>Male Others</u>	<u>Total Females</u>	<u>Female Felons</u>	<u>Female Addicts</u>	<u>Female Others</u>
Actual									
1992	104,352	98,008	94,777	2,477	754	6,344	5,654	628	62
1993	115,534	108,302	104,768	3,067	467	7,232	6,450	732	50
1994	124,813	116,879	113,238	3,189	452	7,934	7,144	750	40
1995	131,342	122,514	119,063	3,114	337	8,828	8,026	766	36
1996	141,017	131,273	128,497	2,465	311	9,744	8,975	736	33
1997	152,506	141,669	139,239	2,163	267	10,837	10,188	583	66
1998	158,207	147,001	144,805	1,924	272	11,206	10,594	562	50
1999	162,064	150,581	148,621	1,703	257	11,483	10,949	495	39
2000	162,000	150,793	148,754	1,776	263	11,207	10,620	535	52
2001	161,497	150,785	148,853	1,668	264	10,712	10,261	403	48
Projected									
2002	156,409	146,578	144,810	1,522	246	9,831	9,429	360	42
2003	155,721	145,956	144,241	1,475	240	9,765	9,389	334	42
2004	156,337	146,503	144,818	1,448	237	9,834	9,482	310	42
2005	158,429	148,555	146,870	1,448	237	9,874	9,550	282	42
2006	161,159	150,936	149,251	1,448	237	10,223	9,925	256	42
2007	164,623	154,027	152,342	1,448	237	10,596	10,328	226	42

Note: Others include county diagnostic cases, persons from other states, federal prisoners, county safekeepers, and California Youth Authority (CYA) wards.

Fall 2001 Projections

Table 2
 Parole and Outpatient Population
 Supervised in California
 June 30, 1992 through June 30, 2007

As of June 30	Total	Total Males	Male Felons	Male Addicts	Male Others	Total Females	Female Felons	Female Addicts	Female Others
Actual									
1992	85,835	77,181	72,567	2,570	2,044	8,654	7,642	825	187
1993	83,887	75,735	70,809	2,839	2,087	8,152	7,024	941	187
1994	85,197	77,014	72,057	3,093	1,864	8,183	7,037	980	166
1995	91,456	83,048	78,450	3,346	1,252	8,408	7,325	960	123
1996	98,013	88,710	84,227	3,172	1,311	9,303	8,311	870	122
1997	100,828	91,002	87,202	2,684	1,116	9,826	8,817	880	129
1998	108,750	97,587	94,158	2,313	1,116	11,163	10,256	751	156
1999	112,494	100,716	97,593	1,954	1,169	11,778	10,944	678	156
2000	119,298	106,505	103,453	1,899	1,153	12,793	12,033	603	157
2001	119,636	106,396	103,232	2,011	1,153	13,240	12,396	674	170
Projected									
2002	120,523	107,003	103,915	1,943	1,145	13,520	12,714	624	182
2003	116,811	104,228	101,253	1,830	1,145	12,583	11,837	564	182
2004	112,301	100,579	97,654	1,780	1,145	11,722	10,995	545	182
2005	108,667	97,314	94,397	1,772	1,145	11,353	10,625	546	182
2006	106,882	95,728	92,811	1,772	1,145	11,154	10,423	549	182
2007	104,999	93,847	90,930	1,772	1,145	11,152	10,409	561	182

Note: Others include co-ops and other state/federal parolees.

K. Two-Year Institution Population and Placement Needs Projections

Tables 3-10

Detail Fiscal Years 2001-02 and 2002-03

Fiscal Years 2001-02 through 2006-07 (Tables 5 & 6)

Fall 2001 Projections

Table 3 (Revised)
 Institution Population
 Fiscal Years 2001/02 through 2002/03

	Actual June 30 2001	Sep 30 2001	Dec 31 2001	Mar 31 2002	Jun 30 2002	Sep 30 2002	Dec 31 2002	Mar 31 2003	Jun 30 2003
Total Population	161,497	158,433	156,239	156,269	156,409	156,001	155,086	155,614	155,721
Men (Inc. CCC)	150,785	148,249	146,350	146,421	146,578	146,260	145,404	145,870	145,956
Women (Inc. CCC)	10,712	10,184	9,889	9,848	9,831	9,741	9,682	9,744	9,765
Total (Exc. CCC)	153,758	150,734	148,559	148,471	149,548	149,140	148,225	148,726	148,833
Men	143,476	140,992	139,112	139,065	139,964	139,646	138,790	139,229	139,315
Felons	141,844	139,409	137,592	137,594	138,496	138,191	137,360	137,814	137,900
Civil Narcotic Addicts	1,368	1,330	1,270	1,224	1,222	1,211	1,187	1,174	1,175
Others 1	264	253	250	247	246	244	243	241	240
Women	10,282	9,742	9,447	9,406	9,584	9,494	9,435	9,497	9,518
Felons	9,831	9,301	9,025	8,999	9,182	9,098	9,047	9,117	9,142
Civil Narcotic Addicts	403	396	380	365	360	354	346	338	334
Others 1	48	45	42	42	42	42	42	42	42
Community Correctional Centers 2	7,739	7,699	7,680	7,798	6,861	6,861	6,861	6,888	6,888
Total Males	7,309	7,257	7,238	7,356	6,614	6,614	6,614	6,641	6,641
Male Felons	7,009	6,957	6,938	7,056	6,314	6,314	6,314	6,341	6,341
Male Civil Narcotic Addicts	300	300	300	300	300	300	300	300	300
Female Felons	430	442	442	442	247	247	247	247	247

1 Others include county diagnostic cases, other state/federal prisoners, safekeepers, and CYA wards.

2 Community Correctional Centers data are based on the bed activation schedule provided by the Parole and Institutions Divisions.

Fall 2001 Projections

Table 4 (Revised)
 Average Daily Institution Population
 Fiscal Years 2001/02 through 2002/03

	FY 2001/02 Avg	Sep 30 2001	Dec 31 2001	Mar 31 2002	Jun 30 2002	FY 2002/03 Avg	Sep 30 2002	Dec 31 2002	Mar 31 2003	Jun 30 2003
Total Population	157,389	159,704	157,470	155,996	156,385	155,706	156,328	155,550	155,136	155,807
Men (Inc. CCC)	147,352	149,300	147,429	146,145	146,536	145,951	146,534	145,825	145,414	146,031
Women (Inc. CCC)	10,037	10,404	10,042	9,851	9,849	9,755	9,794	9,725	9,722	9,777
Total (Exc. CCC)	149,602	151,986	149,787	148,227	148,408	148,832	149,467	148,689	148,253	148,919
Men	139,998	142,020	140,187	138,818	138,968	139,325	139,920	139,211	138,777	139,390
Felons	138,465	140,407	138,634	137,322	137,498	137,889	138,455	137,768	137,357	137,974
Civil Narcotic Addicts	1,282	1,357	1,301	1,247	1,224	1,193	1,220	1,199	1,178	1,175
Others 1	251	256	252	249	247	243	245	244	242	241
Women	9,604	9,967	9,600	9,409	9,440	9,508	9,547	9,478	9,475	9,530
Felons	9,179	9,517	9,167	8,995	9,035	9,119	9,148	9,086	9,091	9,151
Civil Narcotic Addicts	381	402	388	373	362	347	357	350	342	337
Others 1	44	47	44	42	42	42	42	42	42	42
Community Correctional Centers 2	7,787	7,718	7,683	7,769	7,977	6,873	6,861	6,861	6,883	6,888
Total Males	7,354	7,281	7,241	7,327	7,568	6,626	6,614	6,614	6,636	6,641
Male Felons	7,054	6,981	6,941	7,027	7,268	6,326	6,314	6,314	6,336	6,341
Male Civil Narcotic Addicts	300	300	300	300	300	300	300	300	300	300
Female Felons	433	437	442	442	410	247	247	247	247	247

1 Others include county diagnostic cases, other state/federal prisoners, safekeepers, and CYA wards.

2 Community Correctional Centers data are based on the bed activation schedule provided by the Parole and Institutions Divisions.

Fall 2001 Projections

Table 5
 Projected Placement Needs for Male Felon Institution Population
 Fiscal Years 2001/02 through 2006/07

<u>Fiscal Year</u>	<u>Fiscal Quarter</u>	<u>Reception Center</u>	<u>Level I</u>	<u>Level II</u>	<u>Level III</u>	<u>Level IV</u>	<u>Special PHU</u>	<u>Housing SHU</u>	<u>Total Housing</u>	<u>Grand Total</u>
2001/02	September 30	18,685	33,371	31,535	34,180	25,610	30	2,955	2,985	146,366
	December 31	18,595	32,585	30,795	33,925	25,650	30	2,950	2,980	144,530
	March 31	19,490	32,210	30,455	33,790	25,720	30	2,955	2,985	144,650
	June 30	19,585	32,110	30,395	33,865	25,855	30	2,970	3,000	144,810
2002/03	September 30	19,325	31,985	30,295	33,905	25,980	30	2,985	3,015	144,505
	December 31	18,690	31,784	30,130	33,940	26,100	30	3,000	3,030	143,674
	March 31	19,115	31,730	30,095	33,970	26,205	30	3,010	3,040	144,155
	June 30	18,800	31,761	30,165	34,110	26,350	30	3,025	3,055	144,241
2003/04	June 30	18,645	31,678	30,155	34,405	26,820	35	3,080	3,115	144,818
2004/05	June 30	18,550	32,185	30,645	34,980	27,340	35	3,135	3,170	146,870
2005/06	June 30	18,195	32,931	31,320	35,680	27,890	35	3,200	3,235	149,251
2006/07	June 30	18,055	33,902	32,145	36,480	28,455	35	3,270	3,305	152,342

Note: These estimates assume that the male reception center population will increase proportionately with the increase in male felon intake.

Fall 2001 Projections

Table 6
 Projected Placement Needs for Total Male Institution Population
 Fiscal Years 2001/02 through 2006/07

<u>Fiscal Year</u>	<u>Fiscal Quarter</u>	<u>Reception Center</u>	<u>Level I</u>	<u>Level II</u>	<u>Level III</u>	<u>Level IV</u>	<u>Special PHU</u>	<u>Housing SHU</u>	<u>Total Housing</u>	<u>Grand Total</u>
2001/02	September 30	18,938	33,371	33,165	34,180	25,610	30	2,955	2,985	148,249
	December 31	18,845	32,585	32,365	33,925	25,650	30	2,950	2,980	146,350
	March 31	19,737	32,210	31,979	33,790	25,720	30	2,955	2,985	146,421
	June 30	19,831	32,110	31,917	33,865	25,855	30	2,970	3,000	146,578
2002/03	September 30	19,569	31,985	31,806	33,905	25,980	30	2,985	3,015	146,260
	December 31	18,933	31,784	31,617	33,940	26,100	30	3,000	3,030	145,404
	March 31	19,356	31,730	31,569	33,970	26,205	30	3,010	3,040	145,870
	June 30	19,040	31,761	31,640	34,110	26,350	30	3,025	3,055	145,956
2003/04	June 30	18,882	31,678	31,603	34,405	26,820	35	3,080	3,115	146,503
2004/05	June 30	18,787	32,185	32,093	34,980	27,340	35	3,135	3,170	148,555
2005/06	June 30	18,432	32,931	32,768	35,680	27,890	35	3,200	3,235	150,936
2006/07	June 30	18,292	33,902	33,593	36,480	28,455	35	3,270	3,305	154,027

Note: These estimates assume that the male reception center population will increase proportionately with the increase in male felon intake. Reception center includes others as defined on Table 1. Level II includes civil narcotic addicts.

**Population Projections Unit
Estimates and Statistical Analysis Section
Offender Information Services Branch**

**Department of Corrections
State of California
08/27/2001**

Fall 2001 Projections

Table 7
Movement of Male Felon Institution Population
Fiscal Years 2000/01 through 2002/03

<u>Fiscal Year</u>	<u>Fiscal Quarter</u>		<u>Total Intake</u>	<u>From Court</u>	<u>PV-WNT</u>	<u>PV-RTC</u>	<u>Other Intake</u>	<u>Total Outgo</u>	<u>First Parole</u>	<u>PV-RTC Parole</u>	<u>Other Outgo</u>	<u>Gain/Loss</u>	<u>Population End of Qtr</u>
2000/01	Jul-Sep		29,609	8,701	3,661	17,209	38	28,998	12,545	15,626	827	636	149,390
	Oct-Dec		28,318	8,670	3,432	16,179	37	30,044	13,076	16,094	874	-1,700	147,690
	Jan-Mar		29,697	8,691	3,593	17,375	38	28,994	12,244	15,866	884	621	148,311
	Apr-Jun		29,977	8,879	3,606	17,455	37	29,288	12,551	15,765	972	542	148,853
	Total		117,601	34,941	14,292	68,218	150	117,324	50,416	63,351	3,557	99	
2001/02	Jul-Sep	*	26,424	7,709	2,915	15,762	38	28,911	12,437	16,004	470	-2,487	146,366
	Oct-Dec	*	26,296	7,683	3,172	15,404	37	28,132	12,463	15,092	577	-1,836	144,530
	Jan-Mar	*	27,558	7,802	3,360	16,358	38	27,438	11,686	15,037	715	120	144,650
	Apr-Jun	*	27,692	7,995	3,363	16,296	38	27,532	11,730	15,016	786	160	144,810
	Total		107,970	31,189	12,810	63,820	151	112,013	48,316	61,149	2,548	-4,043	
2002/03	Jul-Sep	*	27,326	7,804	3,320	16,164	38	27,631	11,287	15,480	864	-305	144,505
	Oct-Dec	*	26,431	7,775	3,171	15,448	37	27,262	11,332	15,125	805	-831	143,674
	Jan-Mar	*	27,026	7,853	3,223	15,912	38	26,545	10,939	14,798	808	481	144,155
	Apr-Jun	*	26,584	7,989	3,206	15,351	38	26,498	11,116	14,527	855	86	144,241
	Total		107,367	31,421	12,920	62,875	151	107,936	44,674	59,930	3,332	-569	

* Projected

Note: Other intake includes CYA 'M' cases and transfers from other states.
Other outgo includes discharges and deaths.

Fall 2001 Projections

Table 8
 Movement of Female Felon Institution Population
 Fiscal Years 2000/01 through 2002/03

<u>Fiscal Year</u>	<u>Fiscal Quarter</u>		<u>Total Intake</u>	<u>From Court</u>	<u>PV-WNT</u>	<u>PV-RTC</u>	<u>Total Outgo</u>	<u>First Parole</u>	<u>PV-RTC Parole</u>	<u>Other Outgo</u>	<u>Gain/Loss</u>	<u>Population End of Qtr</u>
2000/01	Jul-Sep		3,177	1,141	355	1,681	3,278	1,614	1,589	75	-89	10,531
	Oct-Dec		3,069	1,116	348	1,605	3,202	1,552	1,574	76	-104	10,427
	Jan-Mar		3,030	1,102	326	1,602	3,182	1,526	1,578	78	-186	10,241
	Apr-Jun		3,150	1,133	316	1,701	3,136	1,483	1,572	81	20	10,261
	Total		12,426	4,492	1,345	6,589	12,798	6,175	6,313	310	-359	
2001/02	Jul-Sep	*	2,674	900	232	1,542	3,192	1,509	1,648	35	-518	9,743
	Oct-Dec	*	2,653	887	271	1,495	2,929	1,432	1,459	38	-276	9,467
	Jan-Mar	*	2,765	915	326	1,524	2,791	1,354	1,394	43	-26	9,441
	Apr-Jun	*	2,813	941	314	1,558	2,825	1,310	1,448	67	-12	9,429
	Total		10,905	3,643	1,143	6,119	11,737	5,605	5,949	183	-832	
2002/03	Jul-Sep	*	2,688	936	314	1,438	2,772	1,267	1,441	64	-84	9,345
	Oct-Dec	*	2,668	915	308	1,445	2,719	1,249	1,414	56	-51	9,294
	Jan-Mar	*	2,706	936	297	1,473	2,636	1,219	1,349	68	70	9,364
	Apr-Jun	*	2,719	954	295	1,470	2,694	1,216	1,430	48	25	9,389
	Total		10,781	3,741	1,214	5,826	10,821	4,951	5,634	236	-40	

* Projected

Note: Other outgo includes discharges and deaths.

Fall 2001 Projections

Table 9
Movement of Male Civil Narcotic Addict Institution Population
Fiscal Years 2000/01 through 2002/03

<u>Fiscal Year</u>	<u>Fiscal Quarter</u>		<u>Total Intake</u>	<u>From Court</u>	<u>Outpatients Returned</u>	<u>Total Outgo</u>	<u>Outpatient Status</u>	<u>Other Outgo</u>	<u>Gain/Loss</u>	<u>Population End of Qtr</u>
2000/01	Jul-Sep		478	275	203	431	349	82	31	1,807
	Oct-Dec		499	303	196	598	533	65	-107	1,700
	Jan-Mar		477	252	225	421	343	78	63	1,763
	Apr-Jun		505	280	225	603	493	110	-95	1,668
Total			1,959	1,110	849	2,053	1,718	335	-108	
2001/02	Jul-Sep	*	513	334	179	551	405	146	-38	1,630
	Oct-Dec	*	490	319	171	550	397	153	-60	1,570
	Jan-Mar	*	493	321	172	539	400	139	-46	1,524
	Apr-Jun	*	490	320	170	492	358	134	-2	1,522
Total			1,986	1,294	692	2,132	1,560	572	-146	
2002/03	Jul-Sep	*	481	318	163	492	356	136	-11	1,511
	Oct-Dec	*	468	319	149	492	357	135	-24	1,487
	Jan-Mar	*	471	321	150	484	354	130	-13	1,474
	Apr-Jun	*	469	321	148	468	342	126	1	1,475
Total			1,889	1,279	610	1,936	1,409	527	-47	

* Projected

Note: Other outgo includes discharges and deaths.

Fall 2001 Projections

Table 10
 Movement of Female Civil Narcotic Addict Institution Population
 Fiscal Years 2000/01 through 2002/03

<u>Fiscal Year</u>	<u>Fiscal Quarter</u>		<u>Total Intake</u>	<u>From Court</u>	<u>Outpatients Returned</u>	<u>Total Outgo</u>	<u>Outpatient Status</u>	<u>Other Outgo</u>	<u>Gain/Loss</u>	<u>Population End of Qtr</u>
2000/01	Jul-Sep		129	87	42	147	121	26	-13	522
	Oct-Dec		117	73	44	135	114	21	-17	505
	Jan-Mar		111	64	47	174	154	20	-62	443
	Apr-Jun		97	62	35	134	121	13	-40	403
	Total		454	286	168	590	510	80	-132	
2001/02	Jul-Sep	*	89	46	43	96	80	16	-7	396
	Oct-Dec	*	80	46	34	96	75	21	-16	380
	Jan-Mar	*	78	44	34	93	77	16	-15	365
	Apr-Jun	*	79	44	35	84	69	15	-5	360
	Total		326	180	146	369	301	68	-43	
2002/03	Jul-Sep	*	77	44	33	83	66	17	-6	354
	Oct-Dec	*	71	43	28	79	66	13	-8	346
	Jan-Mar	*	70	41	29	78	64	14	-8	338
	Apr-Jun	*	71	42	29	75	62	13	-4	334
	Total		289	170	119	315	258	57	-26	

* Projected

Note: Other outgo includes discharges and deaths.

L. Two-Year Parole and Outpatient Population Projections

Tables 11-16

Detail Fiscal Years 2001-02 and 2002-03

Fall 2001 Projections

Table 11
 California Supervised Parole and Outpatient Population
 Fiscal Years 2001/02 through 2002/03

	Actual June 30 2001	Sep 30 2001	Dec 31 2001	Mar 31 2002	Jun 30 2002	Sep 30 2002	Dec 31 2002	Mar 31 2003	Jun 30 2003
Total Men and Women	119,636	121,889	123,198	122,142	120,523	119,738	119,569	118,111	116,811
Felons	115,628	117,899	119,226	118,184	116,629	115,901	115,767	114,351	113,090
Outpatients	2,685	2,671	2,648	2,632	2,567	2,510	2,475	2,433	2,394
Others 1	1,323	1,319	1,324	1,326	1,327	1,327	1,327	1,327	1,327
Total Men	106,396	108,257	109,414	108,489	107,003	106,318	106,415	105,227	104,228
Felons	103,232	105,104	106,273	105,354	103,915	103,269	103,386	102,225	101,253
Outpatients	2,011	2,006	1,995	1,990	1,943	1,904	1,884	1,857	1,830
Others 1	1,153	1,147	1,146	1,145	1,145	1,145	1,145	1,145	1,145
Total Women	13,240	13,632	13,784	13,653	13,520	13,420	13,154	12,884	12,583
Felons	12,396	12,795	12,953	12,830	12,714	12,632	12,381	12,126	11,837
Outpatients	674	665	653	642	624	606	591	576	564
Others 1	170	172	178	181	182	182	182	182	182

1 Others include co-ops and other state/federal parolees.

Fall 2001 Projections

Table 12
 Average Daily Parole and Outpatient Population
 Fiscal Years 2001/02 through 2002/03

	FY 2001/02 Avg	Sep 30 2001	Dec 31 2001	Mar 31 2002	Jun 30 2002	FY 2002/03 Avg	Sep 30 2002	Dec 31 2002	Mar 31 2003	Jun 30 2003
Total Men and Women	121,859	120,771	122,347	123,052	121,264	119,046	120,054	119,794	119,000	117,334
Felons	117,891	116,773	118,366	119,087	117,338	115,245	116,192	115,974	115,216	113,596
Outpatients	2,645	2,680	2,659	2,640	2,599	2,474	2,535	2,493	2,457	2,412
Others 1	1,323	1,319	1,322	1,325	1,327	1,327	1,327	1,327	1,327	1,327
Total Men	108,238	107,310	108,626	109,327	107,690	105,924	106,599	106,501	105,969	104,627
Felons	105,099	104,150	105,479	106,189	104,579	102,897	103,534	103,462	102,951	101,640
Outpatients	1,993	2,010	2,001	1,993	1,966	1,883	1,921	1,895	1,873	1,842
Others 1	1,147	1,149	1,147	1,145	1,145	1,145	1,145	1,145	1,145	1,145
Total Women	13,621	13,462	13,721	13,725	13,574	13,122	13,455	13,293	13,031	12,708
Felons	12,792	12,622	12,887	12,898	12,759	12,348	12,658	12,513	12,265	11,956
Outpatients	652	670	659	647	632	592	614	598	584	570
Others 1	177	170	175	180	182	182	182	182	182	182

1 Others include co-ops and other state/federal parolees.

Population Projections Unit
Estimates and Statistical Analysis Section
Offender Information Services Branch

Department of Corrections
State of California
08/27/2001

Fall 2001 Projections

Table 13
Movement of Male Felon Parole Population
Fiscal Years 2000/01 through 2002/03

<u>Fiscal Year</u>	<u>Fiscal Quarter</u>		<u>Total Intake</u>	<u>Paroled</u>	<u>Reinstated</u>	<u>Other Intake</u>	<u>Total Outgo</u>	<u>PV-WNT</u>	<u>PV-RTC</u>	<u>PALS</u>	<u>Other Outgo</u>	<u>Gain/Loss</u>	<u>Population End of Qtr</u>
2000/01	Jul-Sep		33,956	28,121	5,572	263	34,208	3,508	15,348	7,922	7,430	-360	103,093
	Oct-Dec		34,682	29,125	5,278	279	32,935	3,306	14,523	7,337	7,769	1,944	105,037
	Jan-Mar		34,070	28,080	5,732	258	34,795	3,439	15,491	7,682	8,183	-669	104,368
	Apr-Jun		34,230	28,278	5,688	264	35,488	3,444	15,447	8,178	8,419	-1,136	103,232
	Total		136,938	113,604	22,270	1,064	137,426	13,697	60,809	31,119	31,801	-221	
2001/02	Jul-Sep	*	34,398	28,441	5,738	219	32,526	2,766	13,853	7,878	8,029	1,872	105,104
	Oct-Dec	*	33,033	27,555	5,229	249	31,864	3,019	13,785	7,320	7,740	1,169	106,273
	Jan-Mar	*	32,306	26,723	5,303	280	33,225	3,198	14,499	7,308	8,220	-919	105,354
	Apr-Jun	*	32,316	26,746	5,314	256	33,755	3,214	14,497	7,932	8,112	-1,439	103,915
	Total		132,053	109,465	21,584	1,004	131,370	12,197	56,634	30,438	32,101	683	
2002/03	Jul-Sep	*	32,399	26,767	5,378	254	33,045	3,153	14,357	7,225	8,310	-646	103,269
	Oct-Dec	*	31,883	26,457	5,172	254	31,766	3,037	13,634	7,078	8,017	117	103,386
	Jan-Mar	*	31,160	25,737	5,168	255	32,321	3,084	14,126	7,011	8,100	-1,161	102,225
	Apr-Jun	*	30,913	25,643	5,009	261	31,885	3,054	13,592	6,916	8,323	-972	101,253
	Total		126,355	104,604	20,727	1,024	129,017	12,328	55,709	28,230	32,750	-2,662	

* Projected

Note: Other intake includes transfers direct from court, interstate parole unit (ISPU), and co-ops.
PALS are parolees-at-large with warrant issued (absconded from parole supervision).
Other outgo includes transfers to ISPU, discharges and deaths.

Fall 2001 Projections

Table 14
Movement of Female Felon Parole Population
Fiscal Years 2000/01 through 2002/03

<u>Fiscal Year</u>	<u>Fiscal Quarter</u>		<u>Total Intake</u>	<u>Paroled</u>	<u>Reinstated</u>	<u>Other Intake</u>	<u>Total Outgo</u>	<u>PV-WNT</u>	<u>PV-RTC</u>	<u>PALS</u>	<u>Other Outgo</u>	<u>Gain/Loss</u>	<u>Population End of Qtr</u>
2000/01	Jul-Sep		3,991	3,200	742	49	3,903	324	1,478	1,101	1,000	78	12,111
	Oct-Dec		3,912	3,122	750	40	3,697	328	1,427	938	1,004	229	12,340
	Jan-Mar		3,920	3,100	770	50	3,783	299	1,421	1,003	1,060	141	12,481
	Apr-Jun		3,930	3,052	840	38	4,024	304	1,523	1,116	1,081	-85	12,396
	Total		15,753	12,474	3,102	177	15,407	1,255	5,849	4,158	4,145	363	
2001/02	Jul-Sep	*	3,983	3,157	787	39	3,584	199	1,355	976	1,054	399	12,795
	Oct-Dec	*	3,742	2,891	812	39	3,584	241	1,308	1,012	1,023	158	12,953
	Jan-Mar	*	3,561	2,748	774	39	3,684	297	1,344	990	1,053	-123	12,830
	Apr-Jun	*	3,588	2,758	791	39	3,704	287	1,362	944	1,111	-116	12,714
	Total		14,874	11,554	3,164	156	14,556	1,024	5,369	3,922	4,241	318	
2002/03	Jul-Sep	*	3,503	2,708	756	39	3,585	295	1,275	944	1,071	-82	12,632
	Oct-Dec	*	3,424	2,663	722	39	3,675	282	1,289	972	1,132	-251	12,381
	Jan-Mar	*	3,356	2,568	749	39	3,611	274	1,290	947	1,100	-255	12,126
	Apr-Jun	*	3,413	2,646	728	39	3,702	278	1,285	975	1,164	-289	11,837
	Total		13,696	10,585	2,955	156	14,573	1,129	5,139	3,838	4,467	-877	

* Projected

Note: Other intake includes transfers direct from court, interstate parole unit (ISPU), and co-ops.
PALS are parolees-at-large with warrant issued (absconded from parole supervision).
Other outgo includes transfers to ISPU, discharges and deaths.

Fall 2001 Projections

Table 15
 Movement of Male Civil Narcotic Addict Outpatient Population
 Fiscal Years 2000/01 through 2002/03

<u>Fiscal Year</u>	<u>Fiscal Quarter</u>	<u>Total Intake</u>	<u>Released from Institution</u>	<u>Reinstated</u>	<u>Total Outgo</u>	<u>PV-WNT</u>	<u>PV-RTC</u>	<u>RALS</u>	<u>Other Outgo</u>	<u>Gain/Loss</u>	<u>Population End of Qtr</u>
2000/01	Jul-Sep	392	349	43	368	4	190	41	133	15	1,914
	Oct-Dec	564	533	31	394	11	175	46	162	170	2,084
	Jan-Mar	392	343	49	441	8	205	85	143	-45	2,039
	Apr-Jun	549	493	56	580	8	209	75	288	-28	2,011
Total		1,897	1,718	179	1,783	31	779	247	726	112	
2001/02	Jul-Sep *	426	405	21	431	6	148	41	236	-5	2,006
	Oct-Dec *	418	397	21	429	6	141	50	232	-11	1,995
	Jan-Mar *	421	400	21	426	6	142	50	228	-5	1,990
	Apr-Jun *	379	358	21	426	6	140	51	229	-47	1,943
Total		1,644	1,560	84	1,712	24	571	192	925	-68	
2002/03	Jul-Sep *	377	356	21	416	6	133	48	229	-39	1,904
	Oct-Dec *	376	357	19	396	6	119	45	226	-20	1,884
	Jan-Mar *	369	354	15	396	6	120	45	225	-27	1,857
	Apr-Jun *	357	342	15	384	6	118	43	217	-27	1,830
Total		1,479	1,409	70	1,592	24	490	181	897	-113	

* Projected

Note: RALS are releasees-at-large with warrant issued (absconded from outpatient supervision).
 Other outgo includes discharges and deaths.

Fall 2001 Projections

Table 16
 Movement of Female Civil Narcotic Addict Outpatient Population
 Fiscal Years 2000/01 through 2002/03

<u>Fiscal Year</u>	<u>Fiscal Quarter</u>		<u>Total Intake</u>	<u>Released from Institution</u>	<u>Reinstated</u>	<u>Total Outgo</u>	<u>PV-WNT</u>	<u>PV-RTC</u>	<u>RALS</u>	<u>Other Outgo</u>	<u>Gain/Loss</u>	<u>Population End of Qtr</u>
2000/01	Jul-Sep		128	121	7	95	1	41	7	46	34	637
	Oct-Dec		120	114	6	100	1	39	5	55	20	657
	Jan-Mar		165	154	11	120	1	44	20	55	45	702
	Apr-Jun		129	121	8	157	0	33	14	110	-28	674
	Total		542	510	32	472	3	157	46	266	71	
2001/02	Jul-Sep	*	91	80	11	100	0	42	9	49	-9	665
	Oct-Dec	*	87	75	12	99	0	34	10	55	-12	653
	Jan-Mar	*	86	77	9	97	0	34	8	55	-11	642
	Apr-Jun	*	78	69	9	96	0	35	9	52	-18	624
	Total		342	301	41	392	0	145	36	211	-50	
2002/03	Jul-Sep	*	75	66	9	93	0	33	8	52	-18	606
	Oct-Dec	*	75	66	9	90	0	28	8	54	-15	591
	Jan-Mar	*	73	64	9	88	0	29	8	51	-15	576
	Apr-Jun	*	71	62	9	83	0	29	6	48	-12	564
	Total		294	258	36	354	0	119	30	205	-60	

* Projected

Note: RALS are releasees-at-large with warrant issued (absconded from outpatient supervision).
 Other outgo includes discharges and deaths.