
FALL 2003



POPULATION PROJECTIONS

2004 - 2009

*California
Department
Of Corrections*



CALIFORNIA DEPARTMENT OF CORRECTIONS

EDWARD ALAMEIDA, Jr.

Director

KATHY M. KINSER

Chief Deputy Director

Support Services

E. A. MITCHELL

Deputy Director

Policy and Evaluation Division

ARTHUR CHUNG

Chief

Offender Information Services Branch

JAY ATKINSON

Chief

Estimates and Statistical Analysis Section

JACK LEONARD

Operations Research Specialist III

Population Projections Unit

JACQUI CODER

Research Manager I

JUNE DEVOE

Research Analyst II

SHELLEY BUTTLER

Research Analyst II

LORAN GARCIA

Staff Services Analyst

Cover: California State Prison, Sacramento, Tower 31 and Main Entrance

ACKNOWLEDGMENTS

Although the Estimates and Statistical Analysis Section is responsible for the semiannual publication of the Population Projections, others in the Department of Corrections made significant contributions that are greatly appreciated. Among those involved in the projections were (in alphabetical order) the:

- Board of Prison Terms
- Information Systems Division
- Institutions Division
- Office of Budget Management
- Parole and Community Services Division

TABLE OF CONTENTS

PAGE

I. INTRODUCTION----- 1

A. Factors Affecting Population----- 3

B. Comparison of Fall 2003 with Spring 2003 Projections----- 4

II. PREMISES----- 7

C. Felon Admissions----- 9

D. Significant Chaptered Legislation and Initiatives----- 10

E. The Work Incentive Program (WIP)----- 11

F. Court Sentences----- 11

G. Placement Need Projections----- 12

H. Parole Violators----- 12

I. Felon Parole Population----- 12

III. FALL 2003 POPULATION PROJECTIONS----- 15

J. Six-Year Population Projections----- 17

K. Two-Year Institution Population and Placement Needs Projections----- 21

L. Two-Year Parole and Outpatient Population Projections----- 31

I. INTRODUCTION

INTRODUCTION

This document contains the California Department of Corrections' (CDC) projections of institution, parole, and outpatient populations for fiscal years (FY) 2003-04 through 2008-09. The projections are based upon the most current available data and include existing laws and regulations as well as any signed legislation that will come into effect during the current projections cycle. The projections do not include proposed legislation, programs, propositions, or policy changes that have not been signed or affirmed as of the completion of the projection process.

In general, the Fall 2003 Projections do not include programmatic changes associated with the 2003-04 Budget Act.

A. Factors Affecting Population

- On June 30, 2003, the total institution population was 160,931. This is 2,952 higher than the June 30, 2002, population and reverses a three year decline.
- The number of new admissions from court during FY 2002-03 was 43,247, reflecting a 7.8 percent growth from the previous fiscal year. This is in contrast to five years of absolute decline. This increase in admissions has continued into the current fiscal year.
- Since hitting its peak of 28,450 on June 30 1999, the parole violator returned to custody (PV-RTC) population declined to a four year low of 24,335 on June 30, 2003.
- The parole population on June 30, 2003, was 116,173, or 4,163 lower than the June 30, 2002, parole population. This is the result of the decline in new admissions over the previous five years and an increase in discharges over the last three years.

B. Comparison of Fall 2003 with Spring 2003 Projections

1. Institution Population

In the Spring 2003 forecast, the total institution population was expected to be 160,532 by June 30, 2003, which is 399 lower than the actual population of 160,931. The difference is due primarily to more new admissions and fewer releases to parole, partially offset by fewer parolees returned to custody than expected.

The following table compares the Fall 2003 Population Projections to the Spring 2003 Projections.

Table A

Comparison of Fall 2003 with Spring 2003 Projections
 Institution Population
 June 30, 2004 through June 30, 2009

<u>Year End June 30</u>	<u>Fall 2003 Projections</u>	<u>Spring 2003 Projections</u>	<u>Difference</u>
2004	163,536	161,287	2,249
2005	163,620	160,897	2,723
2006	163,347	160,991	2,356
2007	163,511	160,857	2,654
2008	163,727	161,290	2,437
2009	163,987	-	-

It is expected that on June 30, 2004, the inmate population will be 2,249 higher than projected in the spring, primarily due to a significant increase in the number of new admissions from court offset by a decrease in the number of parolees returned to custody. The population is anticipated to increase to 163,987 by June 30, 2009.

2. Parole Population

In the Spring Projections, the parole population was expected to be 116,549 on June 30, 2003, which is 376 higher than the actual population for that date. This difference is due mainly to more discharges from parole and fewer releases from prison, offset by fewer parolees returning to custody.

Table B

Comparison of Fall 2003 with Spring 2003 Projections
Parole Population
June 30, 2004 through June 30, 2009

<u>Year End June 30</u>	<u>Fall 2003 Projections</u>	<u>Spring 2003 Projections</u>	<u>Difference</u>
2004	112,019	115,467	-3,448
2005	110,631	115,810	-5,179
2006	110,077	115,264	-5,187
2007	109,342	115,436	-6,094
2008	109,265	114,797	-5,532
2009	108,682	-	-

From June 30, 2004, through the end of the projection cycle, the Fall 2003 Projections will be lower than the Spring Projections due to an increase in the discharge rate, offset by a reduction in returns to custody.

3. Other Populations

The Civil Narcotic Addict (CNA) institution population was 1,374 on June 30, 2003, or 173 lower than projected in the Spring Projections. It is now estimated that the CNA population will be 1,000 on June 30, 2004, or 504 lower than the Spring Projections.

The parole outpatient population on June 30, 2003, was 2,670, or 71 more than predicted. It is estimated that the parole outpatient population will be 1,979 on June 30, 2004, which is 551 less than the Spring Projections.

Figures 1 and 2 graphically display the Fall 2003 Projections for the institution and parole and outpatient populations. Figure 1 shows the actual and projected institution population, while Figure 2 shows the actual and projected California supervised parole and outpatient populations. Both figures are for FY 1993-94 through 2008-09.

Figure 1
Total Institution Population
Fiscal Years 1993-94 through 2008-09

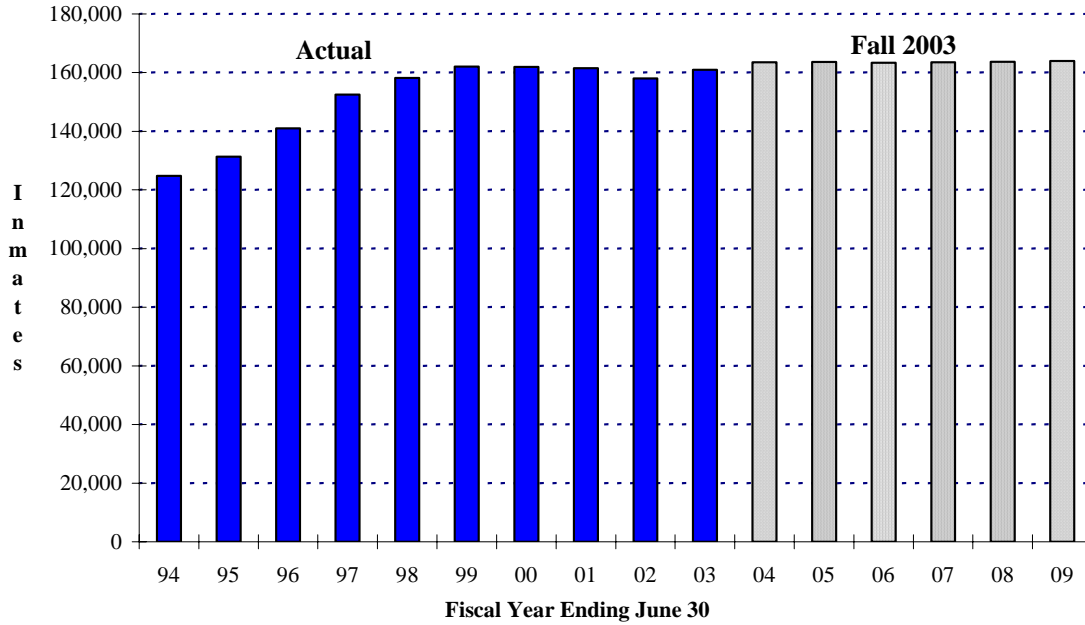
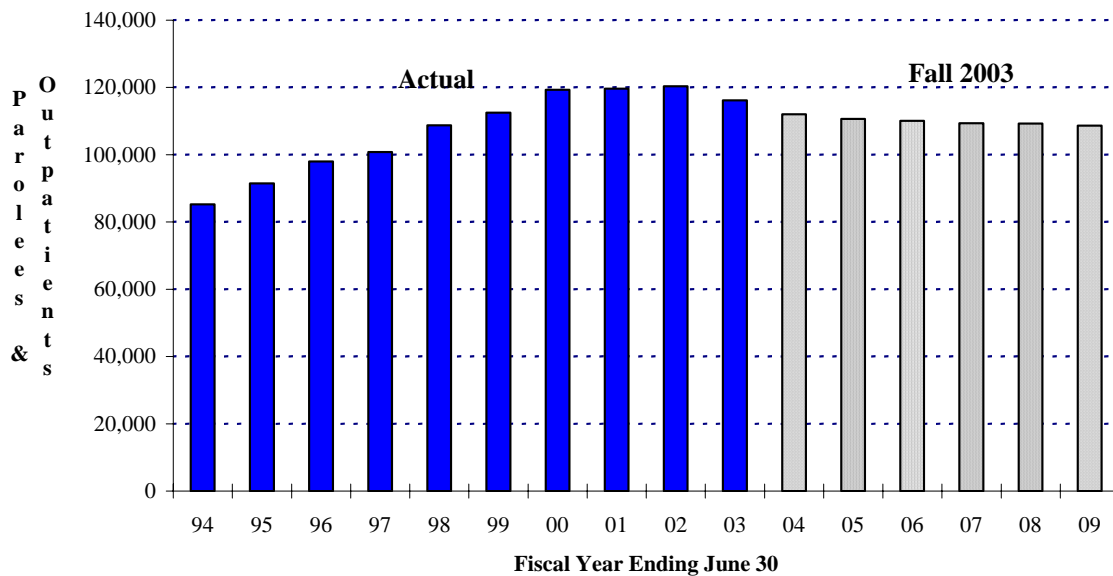


Figure 2
Total Parole Population
Fiscal Years 1993-94 through 2008-09



II. PREMISES

Figure 3
Total Felon Admissions
Actual and Projected
Fiscal Years 1993-94 through 2008-09

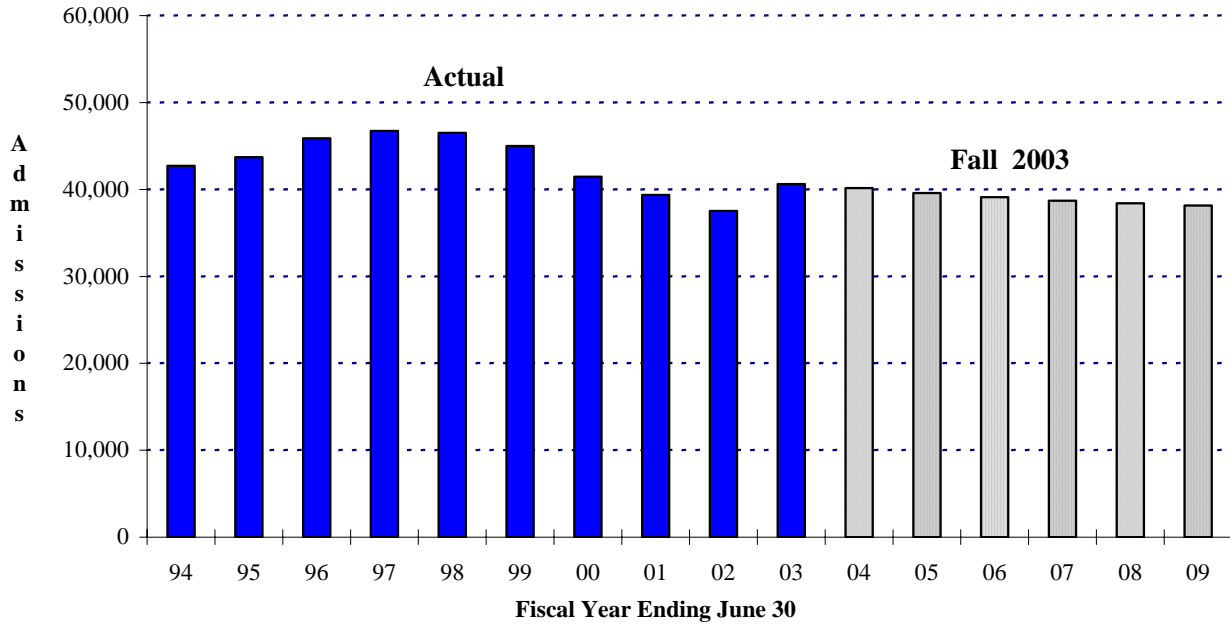
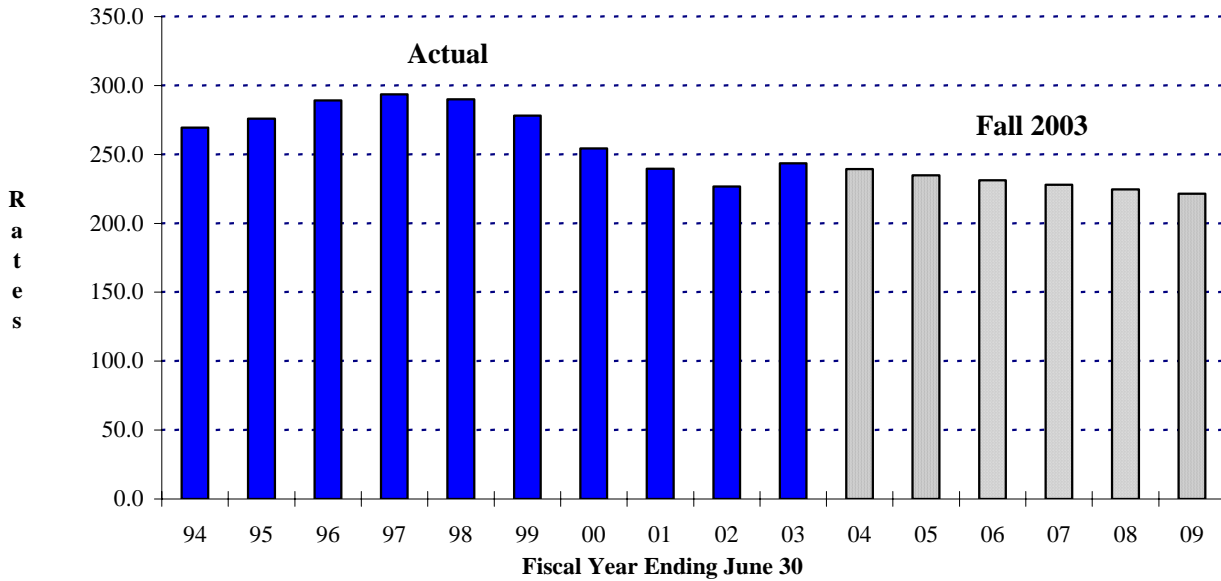


Figure 4
Total Felon Admission Rates
Actual and Projected
Fiscal Years 1993-94 through 2008-09



PREMISES

Figures 3 and 4 on the preceding page display the Fall 2003 Projections for felon admissions. Figure 3 shows the actual and projected felon admissions, while Figure 4 shows the actual and projected felon admission rates per 100,000 California residents, aged 18-49. Both figures are for FY 1993-94 through FY 2008-09.

C. Felon Admissions

Table C, below, summarizes actual felon admissions to the CDC’s prisons from FY 1993-94 through FY 2002-03, while Table D displays the projected felon admissions for FY 2003-04 through FY 2008-09. Consistent with past practice, admission rates displayed in Tables C and D are expressed as the number of felon admissions to prison from court per 100,000 California residents, aged 18-49.

Table C

Actual Total Felon Admissions
Fiscal Years 1993-94 through 2002-03

<u>Fiscal Year</u>	<u>Number of CDC Felon Admissions*</u>	<u>State Population Aged 18-49 (In Thousands)</u>	<u>Admission Rate**</u>
1993-94	42,713	15,850.2	269.5
1994-95	43,707	15,844.2	275.9
1995-96	45,876	15,860.8	289.2
1996-97	46,750	15,930.4	293.5
1997-98	46,511	16,053.8	289.7
1998-99	44,983	16,184.9	277.9
1999-00	41,469	16,303.3	254.4
2000-01	39,351	16,420.3	239.6
2001-02	37,519	16,549.4	226.7
2002-03	40,626	16,676.3	243.6

* Not including CYA "M" cases, other state/federal admissions, or direct admissions to parole.
** Number of CDC felon admissions per 100,000 California state residents, aged 18-49.

The decline in admissions for the prior six fiscal years was reversed over the last fiscal year. Felon admissions for FY 2002-03 were 40,626, up 8.3 percent from FY 2001-02. This compares to declines of approximately 4.9 percent in each of the previous two fiscal years.

In the last six months, January to June 2003, total felon admissions were 21,392, or 10.1 percent more than admissions for the same time period one year ago. This is also the largest increase for the January to June period since 1995. It should be noted that the female felon admissions increased by 18 percent during this time period.

As shown in Table D, below, the Fall 2003 felon admissions projection is higher than the Spring 2003 Projections throughout the projection cycle. This increase is due to the fact that admissions for the last six months were 1,823 more than anticipated in the Spring Projections.

Admissions are projected based on current trends, the estimated impact of seasonality and projected state population aged 18-49.

Table D

Projected Total Felon Admissions
Fiscal Years 2003-04 through 2008-09

<u>Fiscal Year</u>	<u>Fall 2003</u>	<u>Spring 2003</u>	<u>Difference</u>	<u>Rate</u>
2003-04	40,159	38,080	2,079	239.3
2004-05	39,578	37,458	2,120	234.7
2005-06	39,110	36,983	2,127	231.2
2006-07	38,719	36,610	2,109	227.9
2007-08	38,404	36,335	2,069	224.7
2008-09	38,160		-	221.5

D. Significant Chaptered Legislation and Initiatives

There were no initiatives or chaptered legislation since the Spring 2003 Projections.

The following were included in the Spring 2003 projections:

Statutes of 2002: Chapter 606 (AB 1838, Hertzberg) and Chapter 611 (SB 1287, Alarcon).

Statutes of 2003: Chapter 194 (AB 2252, Cohn), Chapter 828 (AB 2499, Frommer), Chapter 829 (AB 2539, Pacheco), Chapter 254 (SB 1254, Alpert), Chapter 832 (SB 1320, Kuehl), Chapter 302 (SB 1421, Romero), and Chapter 394, (SB 1459, Romero).

E. The Work Incentive Program (WIP)

This program allows eligible inmates to earn up to a six month reduction per year in sentence length. The WIP applies to all felons who committed their offenses on or after January 1, 1983, and to those felons who committed their offenses before January 1, 1983, who chose to participate. Approximately 73 percent of the June 30, 2000, eligible population was earning one-half sentence reduction and participation is expected to continue at that level throughout the projection period. The Three Strikes Law limits credit-earning to 20 percent for affected inmates. The Penal Code also limits persons who have been convicted of any violent felony to no more than a 15 percent sentence reduction. On January 1, 2003, inmate campers, who are eligible to earn day-for-day credit, became eligible to earn two-for-one credit. On June 30, 2003, there were a total of 4,133 campers and 1,668 (40 percent) of these campers were earning two-for-one credit.

F. Court Sentences

As shown in Table E, the average sentence for newly admitted felons and parole violators returned with new terms (PV-WNT) was 53 months for FY 2002-03. For the seventh consecutive year, the average work incentive credit stabilized at 12 months. The anticipated time to serve continued to decline to approximately 34 months.

Table E

Average Sentence and Credits
For Felon New Admissions and PV-WNTs
(in months)

<u>Fiscal Year</u>	<u>Sentence</u> ¹	<u>Pre-confinement Credits</u>	<u>WIP Credits</u> ²	<u>Time to Serve</u>
1993-94	47.6	6.4	17.6	23.6
1994-95	51.0	6.9	15.0	29.1
1995-96	54.1	7.1	13.0	34.0
1996-97	56.1	7.1	12.6	36.4
1997-98	54.4	6.8	12.4	35.2
1998-99	54.7	6.8	12.5	35.4
1999-00	54.4	6.9	12.5	34.9
2000-01	53.3	7.0	12.0	34.3
2001-02	53.6	7.1	12.1	34.4
2002-03	53.0	7.0	12.1	34.0

¹ Includes third-strike and other life commitments.

² Work Incentive Program credits based on eligibility.

G. Placement Need Projections

As in the Spring 2003 Projections, the Fall 2003 Projections of institution bed needs, by level, consider both inmate classification score level and administrative determinants, such as institutional security and public safety, as specified in Section 62010 of the California Department of Corrections' Department Operations Manual. It is assumed that the male felon reception center population will fluctuate proportionately with the changes in male felon intake. Special housing projections assume a constant proportion of the number of inmates of each classification level in each of these categories over the projection period. The projections do not consider the impact of operational changes such as the need to single-cell Level IV inmates in the Enhanced Outpatient Program or the increase in indeterminate Security Housing Unit (SHU) terms. Each of these changes in policy or programs could result in the need for additional Level IV and SHU beds.

H. Parole Violators

For the six month period January to June 2003, there were 29,440 male felon parole violators returned to custody or pending parole revocation (PV-RTC/PendRev), 1,994 fewer than projected in the Spring 2003 Projections. The corresponding return rate was 49.6 (3.0 lower than projected). The Fall 2003 Projections assume the PV-RTC/PendRev rate will be about 2.5 points lower than projected in the Spring Projections.

There were 7,023 male felon PV-WNTs for the same January to June 2003 period, 409 more than projected in the Spring 2003 Projections. The corresponding male felon PV-WNT rate was 11.9, less than 1.0 point higher than projected in the Spring. The Fall 2003 Projections assume the PV-WNT rate will be about 1 point higher than projected in the Spring 2003 Projections.

The graphs on the following pages illustrate actual and projected parole return numbers and rates. Figure 5 displays the actual number of male felon parole violator returns by quarter since June 1993. Figure 6 shows the male felon PV-RTC/PendRev rates by quarter from June 1993 to June 2009, while Figure 7 tracks the male felon PV-WNT rates for the same time period.

I. Felon Parole Population

On June 30, 2003, the felon parole population was 111,913, which is 376 lower than projected in Spring 2003. Between January and June, this population decreased by 1,079.

For the six month period of January to June 2003, there were 16,141 male felon parolees suspended to parolee-at-large (PAL) status, 600 more than projected in Spring 2003. The PAL rate was 32.2, or 1.4 higher than projected. The Fall 2003 Projections assume that the male felon PAL rate will be about 1 point higher than projected in the Spring 2003 Projections.

There were 17,393 male felon parolees discharged from parole over the last six months, 1,837 more than projected in Spring 2003. The discharge rate was 29.8, or 3.4 higher than projected. The Fall 2003 Projections assume that the male felon discharge rate will be about 4 points higher than projected in the Spring 2003 Projections.

Figure 5
Male Felon Parole Violator Returns
June 1993 through June 2003

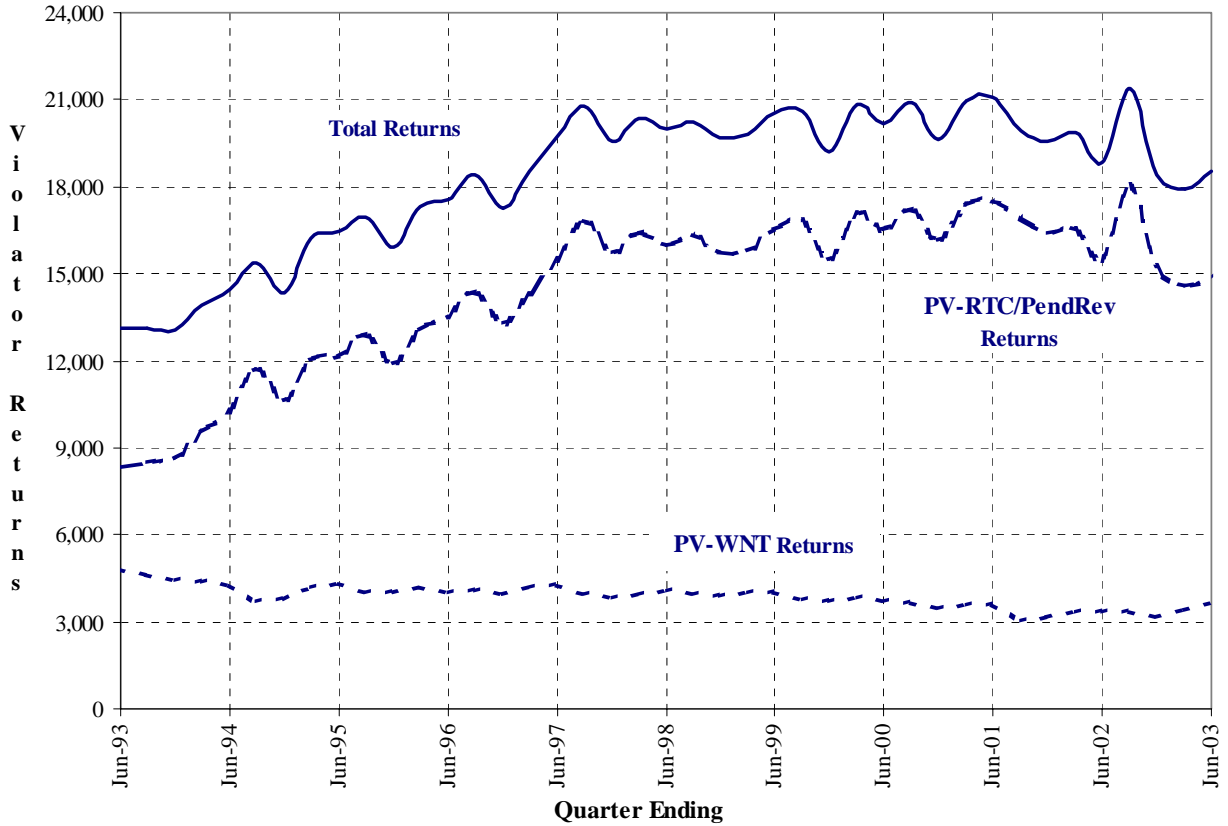
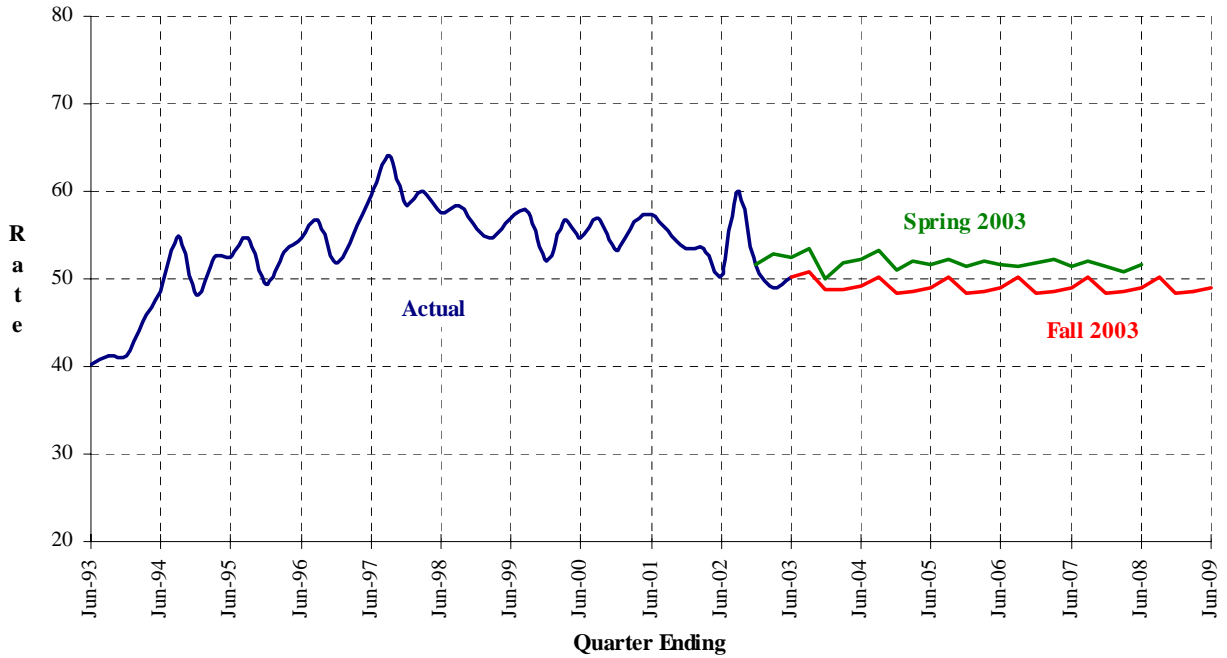
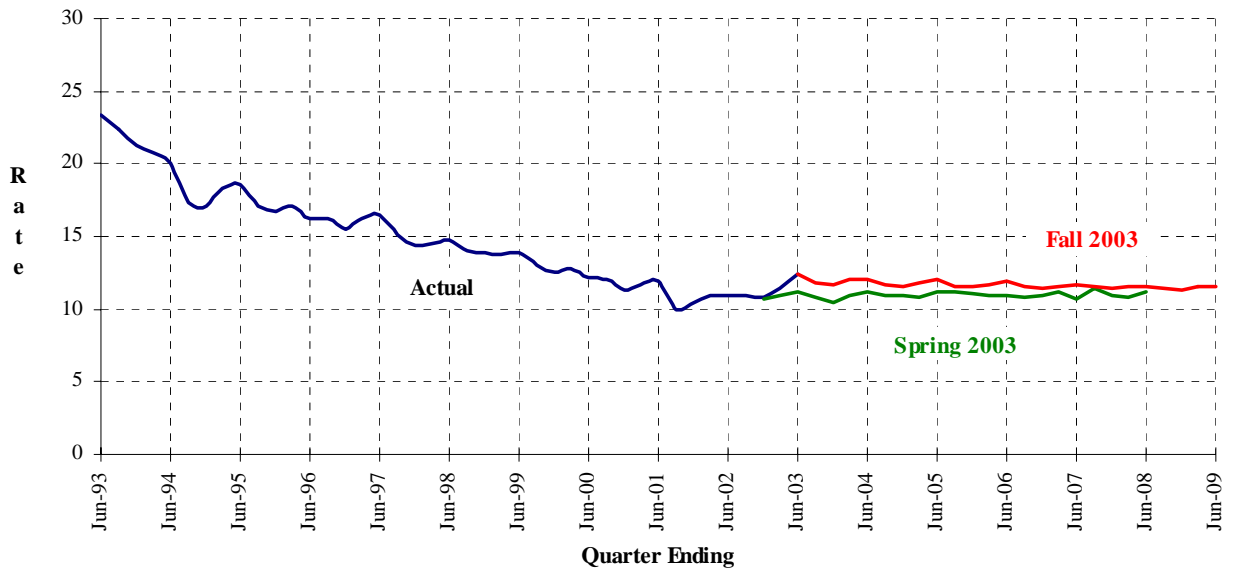


Figure 6
Male Felon PV-RTC/PendRev Rates
June 1993 through June 2009



Note: PV-RTC/PendRevs are parole violators returned to custody or pending revocation.

Figure 7
Male Felon PV-WNT Rates
June 1993 through June 2009



Note: PV-WNTs are parole violators returned with a new term.

III. FALL 2003 POPULATION PROJECTIONS

The Fall 2003 Projections are summarized in Tables 1 and 2 and are presented in greater detail in Tables 3 through 16. Tables 3 and 4 present the quarterly institution populations, while Tables 5 and 6 present detailed projections by inmate placement needs. Tables 7 through 10 project the movement of institution populations (including civil narcotic addicts), and Tables 11 through 16 present detailed projections of the parole and outpatient population.

J. Six Year Population Projections

Tables 1-2

Fiscal Years 2003-04 through 2008-09

Fall 2003 Projections

Table 1
 Institution Population
 June 30, 1994 through June 30, 2009

<u>As of June 30</u>	<u>Total</u>	<u>Total Males</u>	<u>Male Felons</u>	<u>Male Addicts</u>	<u>Male Others</u>	<u>Total Females</u>	<u>Female Felons</u>	<u>Female Addicts</u>	<u>Female Others</u>
Actual									
1994	124,813	116,879	113,238	3,189	452	7,934	7,144	750	40
1995	131,342	122,514	119,063	3,114	337	8,828	8,026	766	36
1996	141,017	131,273	128,497	2,465	311	9,744	8,975	736	33
1997	152,506	141,669	139,239	2,163	267	10,837	10,188	583	66
1998	158,207	147,001	144,805	1,924	272	11,206	10,594	562	50
1999	162,064	150,581	148,621	1,703	257	11,483	10,949	495	39
2000	162,000	150,793	148,754	1,776	263	11,207	10,620	535	52
2001	161,497	150,785	148,853	1,668	264	10,712	10,261	403	48
2002	157,979	148,153	146,455	1,351	347	9,826	9,453	311	62
2003	160,931	150,851	149,449	1,104	298	10,080	9,752	270	58
Projected									
2004	163,536	153,378	152,312	759	307	10,158	9,858	241	59
2005	163,620	153,404	152,337	759	308	10,216	9,948	207	61
2006	163,347	153,042	151,974	759	309	10,305	10,047	196	62
2007	163,511	153,051	151,982	759	310	10,460	10,200	196	64
2008	163,727	153,223	152,153	759	311	10,504	10,242	196	66
2009	163,987	153,359	152,289	759	311	10,628	10,365	196	67

Note: Others include county diagnostic cases, persons from other states, federal prisoners, county safekeepers, and California Youth Authority (CYA) wards.

Fall 2003 Projections

Table 2
 Parole and Outpatient Population
 Supervised in California
 June 30, 1994 through June 30, 2009

<u>As of June 30</u>	<u>Total</u>	<u>Total Males</u>	<u>Male Felons</u>	<u>Male Addicts</u>	<u>Male Others</u>	<u>Total Females</u>	<u>Female Felons</u>	<u>Female Addicts</u>	<u>Female Others</u>
Actual									
1994	85,197	77,014	72,057	3,093	1,864	8,183	7,037	980	166
1995	91,456	83,048	78,450	3,346	1,252	8,408	7,325	960	123
1996	98,013	88,710	84,227	3,172	1,311	9,303	8,311	870	122
1997	100,828	91,002	87,202	2,684	1,116	9,826	8,817	880	129
1998	108,750	97,587	94,158	2,313	1,116	11,163	10,256	751	156
1999	112,494	100,716	97,593	1,954	1,169	11,778	10,944	678	156
2000	119,298	106,505	103,453	1,899	1,153	12,793	12,033	603	157
2001	119,636	106,396	103,232	2,011	1,153	13,240	12,396	674	170
2002	120,336	107,136	103,794	2,027	1,315	13,200	12,366	646	188
2003	116,173	103,371	99,937	2,034	1,400	12,802	11,976	636	190
Projected									
2004	112,019	99,685	96,863	1,418	1,404	12,334	11,583	561	190
2005	110,631	98,691	95,868	1,418	1,405	11,940	11,268	482	190
2006	110,077	98,187	95,364	1,418	1,405	11,890	11,243	457	190
2007	109,342	97,475	94,652	1,418	1,405	11,867	11,220	457	190
2008	109,265	97,157	94,334	1,418	1,405	12,108	11,461	457	190
2009	108,682	96,570	93,746	1,418	1,406	12,112	11,465	457	190

Note: Others include co-ops and other state/federal parolees.

K. Two Year Institution Population and Placement Needs Projections

Tables 3-10

Detail Fiscal Years 2003-04 and 2007-08

Fiscal Years 2003-04 through 2008-09 (Tables 5 & 6)

Fall 2003 Projections

Table 3
 Institution Population
 Fiscal Years 2003/04 through 2004/05

	Actual June 30 2003	Sep 30 2003	Dec 31 2003	Mar 31 2004	Jun 30 2004	Sep 30 2004	Dec 31 2004	Mar 31 2005	Jun 30 2005
Total Population	160,931	161,960	162,042	162,776	163,536	163,256	162,779	162,981	163,620
Men (Inc. CCC)	150,851	151,644	151,838	152,655	153,378	153,087	152,705	152,893	153,404
Women (Inc. CCC)	10,080	10,316	10,204	10,121	10,158	10,169	10,074	10,088	10,216
Total (Exc. CCC)	153,311	154,940	155,010	156,443	157,203	157,365	156,888	157,090	157,729
Men	143,699	145,080	145,262	146,797	147,520	147,476	147,094	147,282	147,793
Felons	142,297	143,768	144,037	145,676	146,454	146,423	146,030	146,225	146,726
Civil Narcotic Addicts	1,104	1,019	921	824	759	759	759	759	759
Others 1	298	293	304	297	307	294	305	298	308
Women	9,612	9,860	9,748	9,646	9,683	9,889	9,794	9,808	9,936
Felons	9,284	9,543	9,434	9,343	9,383	9,603	9,512	9,537	9,668
Civil Narcotic Addicts	270	265	257	249	241	233	223	215	207
Others 1	58	52	57	54	59	53	59	56	61
Community Correctional Centers 2	7,620	7,020	7,032	6,333	6,333	5,891	5,891	5,891	5,891
Total Males	7,152	6,564	6,576	5,858	5,858	5,611	5,611	5,611	5,611
Male Felons	7,152	6,564	6,576	5,858	5,858	5,611	5,611	5,611	5,611
Male Civil Narcotic Addicts	0	0	0	0	0	0	0	0	0
Female Felons	468	456	456	475	475	280	280	280	280

1 Others include county diagnostic cases, other state/federal prisoners, safekeepers, and CYA wards.

2 Community Correctional Center (CCC) data are based on the bed activation schedules provided by the Parole and Institutions Divisions.

Fall 2003 Projections

Table 4
 Average Daily Institution Population
 Fiscal Years 2003/04 through 2004/05

	FY 2003/04 Avg	Sep 30 2003	Dec 31 2003	Mar 31 2004	Jun 30 2004	FY 2004/05 Avg	Sep 30 2004	Dec 31 2004	Mar 31 2005	Jun 30 2005
Total Population	162,307	161,400	162,320	162,333	163,175	163,138	163,277	163,144	162,736	163,395
Men (Inc. CCC)	152,095	151,156	152,033	152,172	153,018	153,005	153,109	153,004	152,662	153,244
Women (Inc. CCC)	10,212	10,244	10,287	10,161	10,157	10,133	10,168	10,140	10,074	10,150
Total (Exc. CCC)	155,582	154,279	155,290	155,917	156,842	157,228	157,312	157,253	156,845	157,504
Men	145,835	144,493	145,459	146,227	147,160	147,384	147,457	147,393	147,051	147,633
Felons	144,609	143,130	144,187	145,047	146,073	146,320	146,399	146,330	145,984	146,567
Civil Narcotic Addicts	922	1,066	970	873	781	759	759	759	759	759
Others 1	303	297	302	308	306	304	299	303	309	307
Women	9,747	9,786	9,831	9,690	9,682	9,845	9,855	9,860	9,794	9,870
Felons	9,435	9,464	9,516	9,380	9,381	9,564	9,563	9,576	9,516	9,602
Civil Narcotic Addicts	257	269	261	253	245	224	237	228	219	211
Others 1	55	53	54	56	56	57	55	56	58	57
Community Correctional Centers 2	6,725	7,121	7,030	6,416	6,333	5,910	5,965	5,891	5,891	5,891
Total Males	6,260	6,663	6,574	5,944	5,858	5,621	5,653	5,611	5,611	5,611
Male Felons	6,260	6,663	6,574	5,944	5,858	5,621	5,653	5,611	5,611	5,611
Male Civil Narcotic Addicts	0	0	0	0	0	0	0	0	0	0
Female Felons	465	458	456	472	475	288	313	280	280	280

1 Others include county diagnostic cases, other state/federal prisoners, safekeepers, and CYA wards.

2 Community Correctional Center (CCC) data are based on the bed activation schedules provided by the Parole and Institutions Divisions.

Fall 2003 Projections

Table 5 (Revised)
 Projected Placement Needs for Male Felon Institution Population
 Fiscal Years 2003/04 through 2008/09

<u>Fiscal Year</u>	<u>Fiscal Quarter</u>	<u>Reception Center</u>	<u>Level I</u>	<u>Level II</u>	<u>Level III</u>	<u>Level IV</u>	<u>Special PHU</u>	<u>Housing SHU</u>	<u>Total Housing</u>	<u>Grand Total</u>
2003/04	September 30	22,215	32,232	32,350	35,410	25,380	25	2,720	2,745	150,332
	December 31	21,090	32,653	32,760	35,745	25,600	25	2,740	2,765	150,613
	March 31	21,090	32,924	33,020	35,955	25,760	25	2,760	2,785	151,534
	June 30	21,445	32,997	33,100	36,080	25,890	25	2,775	2,800	152,312
2004/05	September 30	21,075	32,949	33,050	36,145	26,005	25	2,785	2,810	152,034
	December 31	20,775	32,841	32,930	36,170	26,105	25	2,795	2,820	151,641
	March 31	20,950	32,781	32,875	36,200	26,200	25	2,805	2,830	151,836
	June 30	21,205	32,792	32,905	36,285	26,305	25	2,820	2,845	152,337
2005/06	June 30	20,670	32,589	32,695	36,460	26,680	25	2,855	2,880	151,974
2006/07	June 30	20,520	32,432	32,535	36,590	26,990	25	2,890	2,915	151,982
2007/08	June 30	20,305	32,378	32,480	36,765	27,285	25	2,915	2,940	152,153
2008/09	June 30	20,035	32,354	32,440	36,940	27,550	25	2,945	2,970	152,289

Note: These estimates assume that the male reception center population will increase proportionately with the increase in male felon intake.

Fall 2003 Projections

Table 6 (Revised)
 Projected Placement Needs for Total Male Institution Population
 Fiscal Years 2003/04 through 2008/09

Fiscal Year	Fiscal Quarter	Reception Center	Level I	Level II	Level III	Level IV	Special PHU	Housing SHU	Total Housing	Grand Total
2003/04	September 30	22,508	32,232	33,369	35,410	25,380	25	2,720	2,745	151,644
	December 31	21,394	32,653	33,681	35,745	25,600	25	2,740	2,765	151,838
	March 31	21,387	32,924	33,844	35,955	25,760	25	2,760	2,785	152,655
	June 30	21,752	32,997	33,859	36,080	25,890	25	2,775	2,800	153,378
2004/05	September 30	21,369	32,949	33,809	36,145	26,005	25	2,785	2,810	153,087
	December 31	21,080	32,841	33,689	36,170	26,105	25	2,795	2,820	152,705
	March 31	21,248	32,781	33,634	36,200	26,200	25	2,805	2,830	152,893
	June 30	21,513	32,792	33,664	36,285	26,305	25	2,820	2,845	153,404
2005/06	June 30	20,979	32,589	33,454	36,460	26,680	25	2,855	2,880	153,042
2006/07	June 30	20,830	32,432	33,294	36,590	26,990	25	2,890	2,915	153,051
2007/08	June 30	20,616	32,378	33,239	36,765	27,285	25	2,915	2,940	153,223
2008/09	June 30	20,346	32,354	33,199	36,940	27,550	25	2,945	2,970	153,359

Note: These estimates assume that the male reception center population will increase proportionately with the increase in male felon intake. Reception Center includes others as defined on Table 1. Level II includes civil narcotic addicts.

**Population Projections Unit
Estimates and Statistical Analysis Section
Offender Information Services Branch**

**Department of Corrections
State of California
09/09/2003**

Fall 2003 Projections

Table 7
Movement of Male Felon Institution Population
Fiscal Years 2002/03 through 2004/05

<u>Fiscal Year</u>	<u>Fiscal Quarter</u>		<u>Total Intake</u>	<u>From Court</u>	<u>PV-WNT</u>	<u>PV-RTC</u>	<u>Other Intake</u>	<u>Total Outgo</u>	<u>First Parole</u>	<u>PV-RTC Parole</u>	<u>Other Outgo</u>	<u>Gain/Loss</u>	<u>Population End of Qtr</u>
2002/03	Jul-Sep		30,039	8,612	3,324	18,077	26	27,161	11,261	14,923	977	2,799	149,254
	Oct-Dec		27,125	8,542	3,196	15,365	22	28,121	11,566	15,594	961	-926	148,328
	Jan-Mar		26,994	9,011	3,381	14,575	27	27,056	11,525	14,661	870	-258	148,070
	Apr-Jun		28,497	9,946	3,655	14,870	26	27,093	11,952	14,307	834	1,379	149,449
	Total		112,655	36,111	13,556	62,887	101	109,431	46,304	59,485	3,642	2,994	
2003/04	Jul-Sep	*	27,660	9,130	3,779	14,725	26	26,777	11,767	14,597	413	883	150,332
	Oct-Dec	*	26,260	8,637	3,357	14,240	26	25,979	11,883	13,574	522	281	150,613
	Jan-Mar	*	26,259	8,850	3,306	14,079	24	25,338	11,558	13,179	601	921	151,534
	Apr-Jun	*	26,699	9,093	3,366	14,213	27	25,921	11,948	13,268	705	778	152,312
	Total		106,878	35,710	13,808	57,257	103	104,015	47,156	54,618	2,241	2,863	
2004/05	Jul-Sep	*	26,236	8,706	3,322	14,182	26	26,514	12,270	13,542	702	-278	152,034
	Oct-Dec	*	25,866	8,618	3,366	13,856	26	26,259	12,296	13,210	753	-393	151,641
	Jan-Mar	*	26,086	8,758	3,382	13,922	24	25,891	12,142	13,061	688	195	151,836
	Apr-Jun	*	26,402	9,040	3,408	13,927	27	25,901	12,281	12,913	707	501	152,337
	Total		104,590	35,122	13,478	55,887	103	104,565	48,989	52,726	2,850	25	

* Projected

Note: Other intake includes CYA
Other outgo includes discharges and deaths.

Fall 2003 Projections

Table 8
 Movement of Female Felon Institution Population
 Fiscal Years 2002/03 through 2004/05

<u>Fiscal Year</u>	<u>Fiscal Quarter</u>		<u>Total Intake</u>	<u>From Court</u>	<u>PV-WNT</u>	<u>PV-RTC</u>	<u>Total Outgo</u>	<u>First Parole</u>	<u>PV-RTC Parole</u>	<u>Other Outgo</u>	<u>Gain/Loss</u>	<u>Population End of Qtr</u>
2002/03	Jul-Sep		2,899	1,064	303	1,532	2,682	1,221	1,388	73	235	9,688
	Oct-Dec		2,537	1,022	268	1,247	2,795	1,316	1,422	57	-262	9,426
	Jan-Mar		2,705	1,137	305	1,263	2,665	1,375	1,236	54	41	9,467
	Apr-Jun		2,947	1,296	319	1,332	2,661	1,360	1,250	51	285	9,752
Total			11,088	4,519	1,195	5,374	10,803	5,272	5,296	235	299	
2003/04	Jul-Sep	*	2,946	1,189	375	1,382	2,699	1,385	1,285	29	247	9,999
	Oct-Dec	*	2,669	1,040	310	1,319	2,778	1,390	1,341	47	-109	9,890
	Jan-Mar	*	2,728	1,094	311	1,323	2,800	1,446	1,310	44	-72	9,818
	Apr-Jun	*	2,769	1,138	298	1,333	2,729	1,387	1,287	55	40	9,858
Total			11,112	4,461	1,294	5,357	11,006	5,608	5,223	175	106	
2004/05	Jul-Sep	*	2,776	1,120	306	1,350	2,751	1,435	1,267	49	25	9,883
	Oct-Dec	*	2,646	1,084	317	1,245	2,737	1,445	1,230	62	-91	9,792
	Jan-Mar	*	2,735	1,125	316	1,294	2,710	1,423	1,238	49	25	9,817
	Apr-Jun	*	2,766	1,139	318	1,309	2,635	1,398	1,191	46	131	9,948
Total			10,923	4,468	1,257	5,198	10,833	5,701	4,926	206	90	

* Projected

Note: Other outgo includes discharges and deaths.

Fall 2003 Projections

Table 9
 Movement of Male Civil Narcotic Addict Institution Population
 Fiscal Years 2002/03 through 2004/05

<u>Fiscal Year</u>	<u>Fiscal Quarter</u>		<u>Total Intake</u>	<u>From Court</u>	<u>Outpatients Returned</u>	<u>Total Outgo</u>	<u>Outpatient Status</u>	<u>Other Outgo</u>	<u>Gain/Loss</u>	<u>Population End of Qtr</u>
2002/03	Jul-Sep		457	214	243	512	455	57	-61	1,290
	Oct-Dec		438	202	236	443	384	59	-1	1,289
	Jan-Mar		426	206	220	529	476	53	-105	1,184
	Apr-Jun		421	166	255	496	437	59	-80	1,104
	Total		1,742	788	954	1,980	1,752	228	-247	
2003/04	Jul-Sep	*	419	201	218	504	333	171	-85	1,019
	Oct-Dec	*	360	176	184	458	221	237	-98	921
	Jan-Mar	*	314	153	161	411	183	228	-97	824
	Apr-Jun	*	302	149	153	367	206	161	-65	759
	Total		1,395	679	716	1,740	943	797	-345	
2004/05	Jul-Sep	*	357	183	174	357	321	36	0	759
	Oct-Dec	*	357	183	174	357	321	36	0	759
	Jan-Mar	*	357	183	174	357	321	36	0	759
	Apr-Jun	*	357	183	174	357	321	36	0	759
	Total		1,428	732	696	1,428	1,284	144	0	

* Projected

Note: Other outgo includes discharges and deaths.

Fall 2003 Projections

Table 10
 Movement of Female Civil Narcotic Addict Institution Population
 Fiscal Years 2002/03 through 2004/05

Fiscal Year	Fiscal Quarter		Total Intake	From Court	Outpatients Returned	Total Outgo	Outpatient Status	Other Outgo	Gain/Loss	Population End of Qtr
2002/03	Jul-Sep		88	46	42	98	91	7	4	315
	Oct-Dec		77	44	33	85	81	4	-8	307
	Jan-Mar		80	49	31	103	95	8	-24	283
	Apr-Jun		112	75	37	128	119	9	-13	270
Total			357	214	143	414	386	28	-41	
2003/04	Jul-Sep	*	111	72	39	116	97	19	-5	265
	Oct-Dec	*	105	68	37	113	94	19	-8	257
	Jan-Mar	*	100	66	34	108	89	19	-8	249
	Apr-Jun	*	97	63	34	105	85	20	-8	241
Total			413	269	144	442	365	77	-29	
2004/05	Jul-Sep	*	93	61	32	101	80	21	-8	233
	Oct-Dec	*	88	58	30	98	72	26	-10	223
	Jan-Mar	*	87	57	30	95	71	24	-8	215
	Apr-Jun	*	82	54	28	90	70	20	-8	207
Total			350	230	120	384	293	91	-34	

* Projected

Note: Other outgo includes discharges and deaths.

L. Two Year Parole and Outpatient Population Projections

Tables 11-16

Detail Fiscal Years 2003-04 and 2004-05

Fall 2003 Projections

Table 11
 California Supervised Parole and Outpatient Population
 Fiscal Years 2003/04 through 2004/05

	Actual June 30 2003	Sep 30 2003	Dec 31 2003	Mar 31 2004	Jun 30 2004	Sep 30 2004	Dec 31 2004	Mar 31 2005	Jun 30 2005
Total Men and Women	116,173	115,191	114,594	113,351	112,019	111,930	111,987	111,332	110,631
Felons	111,913	111,067	110,673	109,637	108,446	108,377	108,454	107,820	107,136
Outpatients	2,670	2,533	2,327	2,123	1,979	1,960	1,938	1,919	1,900
Others 1	1,590	1,591	1,594	1,591	1,594	1,593	1,595	1,593	1,595
Total Men	103,371	102,704	102,124	100,866	99,685	99,745	99,852	99,321	98,691
Felons	99,937	99,387	98,992	97,922	96,863	96,924	97,029	96,500	95,868
Outpatients	2,034	1,916	1,728	1,543	1,418	1,418	1,418	1,418	1,418
Others 1	1,400	1,401	1,404	1,401	1,404	1,403	1,405	1,403	1,405
Total Women	12,802	12,487	12,470	12,485	12,334	12,185	12,135	12,011	11,940
Felons	11,976	11,680	11,681	11,715	11,583	11,453	11,425	11,320	11,268
Outpatients	636	617	599	580	561	542	520	501	482
Others 1	190	190	190	190	190	190	190	190	190

1 Others include co-ops and other state/federal parolees.

Fall 2003 Projections

Table 12
 Average Daily Parole and Outpatient Population
 Fiscal Years 2003/04 through 2004/05

	FY 2003/04 Avg	Sep 30 2003	Dec 31 2003	Mar 31 2004	Jun 30 2004	FY 2004/05 Avg	Sep 30 2004	Dec 31 2004	Mar 31 2005	Jun 30 2005
Total Men and Women	114,276	115,851	114,795	113,936	112,521	111,678	112,213	111,931	111,659	110,909
Felons	110,356	111,636	110,772	110,117	108,897	108,146	108,651	108,390	108,137	107,404
Outpatients	2,328	2,625	2,430	2,225	2,030	1,939	1,969	1,948	1,928	1,910
Others 1	1,592	1,590	1,592	1,593	1,594	1,594	1,592	1,594	1,594	1,595
Total Men	101,781	103,190	102,343	101,449	100,141	99,562	99,929	99,812	99,584	98,924
Felons	98,650	99,793	99,118	98,410	97,277	96,740	97,109	96,990	96,762	96,100
Outpatients	1,729	1,998	1,822	1,636	1,460	1,418	1,418	1,418	1,418	1,418
Others 1	1,402	1,400	1,402	1,403	1,404	1,404	1,402	1,404	1,404	1,405
Total Women	12,495	12,661	12,452	12,487	12,380	12,116	12,283	12,119	12,075	11,986
Felons	11,706	11,844	11,654	11,707	11,620	11,405	11,542	11,400	11,375	11,304
Outpatients	599	627	608	589	570	521	551	530	510	492
Others 1	190	190	190	190	190	190	190	190	190	190

1 Others include co-ops and other state/federal parolees.

Fall 2003 Projections

Table 13
 Movement of Male Felon Parole Population
 Fiscal Years 2002/03 through 2004/05

Fiscal Year	Fiscal Quarter		Total Intake	Paroled	Reinstated	Other Intake	Total Outgo	PV-WNT	PV-RTC	PALS	Other Outgo	Gain/Loss	Population End of Qtr
2002/03	Jul-Sep		32,994	26,143	6,498	353	36,636	3,191	15,995	9,167	8,283	-3,633	100,161
	Oct-Dec		33,450	27,123	6,010	317	32,575	3,091	13,430	7,677	8,377	770	100,931
	Jan-Mar		32,485	26,155	5,993	337	32,834	3,238	12,779	7,590	9,227	-237	100,694
	Apr-Jun		33,187	26,220	6,697	270	34,083	3,497	13,076	8,548	8,962	-757	99,937
	Total		132,116	105,641	25,198	1,277	136,128	13,017	55,280	32,982	34,849	-3,857	
2003/04	Jul-Sep	*	33,181	26,364	6,495	322	33,731	3,644	12,876	8,302	8,909	-550	99,387
	Oct-Dec	*	31,718	25,457	5,939	322	32,113	3,232	12,474	7,914	8,493	-395	98,992
	Jan-Mar	*	30,936	24,737	5,875	324	32,006	3,190	12,361	7,668	8,787	-1,070	97,922
	Apr-Jun	*	31,431	25,216	5,877	338	32,490	3,203	12,422	8,086	8,779	-1,059	96,863
	Total		127,266	101,774	24,186	1,306	130,340	13,269	50,133	31,970	34,968	-3,074	
2004/05	Jul-Sep	*	32,168	25,812	6,023	333	32,107	3,170	12,450	7,732	8,755	61	96,924
	Oct-Dec	*	31,706	25,506	5,868	332	31,601	3,221	12,145	7,762	8,473	105	97,029
	Jan-Mar	*	31,406	25,203	5,869	334	31,935	3,235	12,254	7,637	8,809	-529	96,500
	Apr-Jun	*	31,424	25,194	5,882	348	32,056	3,281	12,167	7,775	8,833	-632	95,868
	Total		126,704	101,715	23,642	1,347	127,699	12,907	49,016	30,906	34,870	-995	

* Projected

Note: Other intake includes transfers direct from court, interstate parole unit (ISPU), and co-ops.
 PALS are parolees-at-large with warrant issued (absconded from parole supervision).
 Other outgo includes transfers to ISPU, discharges and deaths.

Fall 2003 Projections

Table 14
 Movement of Female Felon Parole Population
 Fiscal Years 2002/03 through 2004/05

Fiscal Year	Fiscal Quarter		Total Intake	Paroled	Reinstated	Other Intake	Total Outgo	PV-WNT	PV-RTC	PALS	Other Outgo	Gain/Loss	Population End of Qtr
2002/03	Jul-Sep		3,572	2,602	926	44	4,010	290	1,327	1,232	1,161	-449	11,917
	Oct-Dec		3,618	2,734	838	46	3,473	258	1,055	1,016	1,144	144	12,061
	Jan-Mar		3,508	2,608	847	53	3,515	285	1,114	890	1,226	6	12,067
	Apr-Jun		3,615	2,605	981	29	3,735	302	1,164	1,100	1,169	-91	11,976
	Total		14,313	10,549	3,592	172	14,733	1,135	4,660	4,238	4,700	-390	
2003/04	Jul-Sep	*	3,601	2,670	883	48	3,897	364	1,202	1,180	1,151	-296	11,680
	Oct-Dec	*	3,618	2,731	847	40	3,617	295	1,134	1,057	1,131	1	11,681
	Jan-Mar	*	3,662	2,756	863	43	3,628	296	1,153	1,009	1,170	34	11,715
	Apr-Jun	*	3,578	2,674	856	48	3,710	282	1,159	1,080	1,189	-132	11,583
	Total		14,459	10,831	3,449	179	14,852	1,237	4,648	4,326	4,641	-393	
2004/05	Jul-Sep	*	3,609	2,702	857	50	3,739	289	1,188	1,126	1,136	-130	11,453
	Oct-Dec	*	3,539	2,675	823	41	3,567	299	1,084	1,013	1,171	-28	11,425
	Jan-Mar	*	3,578	2,661	872	45	3,683	302	1,136	1,057	1,188	-105	11,320
	Apr-Jun	*	3,494	2,589	856	49	3,546	297	1,140	1,026	1,083	-52	11,268
	Total		14,220	10,627	3,408	185	14,535	1,187	4,548	4,222	4,578	-315	

* Projected

Note: Other intake includes transfers direct from court, interstate parole unit (ISPU), and co-ops.
 PALS are parolees-at-large with warrant issued (absconded from parole supervision).
 Other outgo includes transfers to ISPU, discharges and deaths.

Fall 2003 Projections

Table 15
 Movement of Male Civil Narcotic Addict Outpatient Population
 Fiscal Years 2002/03 through 2004/05

<u>Fiscal Year</u>	<u>Fiscal Quarter</u>	<u>Total Intake</u>	<u>Released from Institution</u>	<u>Reinstated</u>	<u>Total Outgo</u>	<u>PV-WNT</u>	<u>PV-RTC</u>	<u>RALS</u>	<u>Other Outgo</u>	<u>Gain/Loss</u>	<u>Population End of Qtr</u>
2002/03	Jul-Sep	503	455	48	549	4	225	106	214	-47	1,980
	Oct-Dec	441	384	57	454	6	215	59	174	-11	1,969
	Jan-Mar	513	476	37	458	8	200	63	187	52	2,021
	Apr-Jun	476	437	39	466	7	233	76	150	13	2,034
Total		1,933	1,752	181	1,927	25	873	304	725	7	
2003/04	Jul-Sep *	386	333	53	504	0	206	50	248	-118	1,916
	Oct-Dec *	271	221	50	459	0	175	38	246	-188	1,728
	Jan-Mar *	227	183	44	412	0	152	33	227	-185	1,543
	Apr-Jun *	243	206	37	368	0	144	33	191	-125	1,418
Total		1,127	943	184	1,743	0	677	154	912	-616	
2004/05	Jul-Sep *	357	321	36	357	0	165	48	144	0	1,418
	Oct-Dec *	357	321	36	357	0	165	48	144	0	1,418
	Jan-Mar *	357	321	36	357	0	165	48	144	0	1,418
	Apr-Jun *	357	321	36	357	0	165	48	144	0	1,418
Total		1,428	1,284	144	1,428	0	660	192	576	0	

* Projected

Note: RALS are releasees-at-large with warrant issued (absconded from outpatient supervision).
 Other outgo includes discharges and deaths.

Fall 2003 Projections

Table 16
 Movement of Female Civil Narcotic Addict Outpatient Population
 Fiscal Years 2002/03 through 2004/05

Fiscal Year	Fiscal Quarter		Total Intake	Released from Institution	Reinstated	Total Outgo	PV-WNT	PV-RTC	RALS	Other Outgo	Gain/Loss	Population End of Qtr
2002/03	Jul-Sep		100	91	9	106	0	38	17	51	-5	641
	Oct-Dec		88	81	7	137	1	27	11	98	-52	589
	Jan-Mar		105	95	10	102	0	29	12	61	5	594
	Apr-Jun		132	119	13	90	0	35	13	42	42	636
	Total		425	386	39	435	1	129	53	252	-10	
2003/04	Jul-Sep	*	106	97	9	125	0	36	12	77	-19	617
	Oct-Dec	*	103	94	9	121	0	34	10	77	-18	599
	Jan-Mar	*	98	89	9	117	0	31	10	76	-19	580
	Apr-Jun	*	94	85	9	113	0	31	10	72	-19	561
	Total		401	365	36	476	0	132	42	302	-75	
2004/05	Jul-Sep	*	90	80	10	109	0	30	11	68	-19	542
	Oct-Dec	*	84	72	12	106	0	30	10	66	-22	520
	Jan-Mar	*	82	71	11	101	0	29	10	62	-19	501
	Apr-Jun	*	79	70	9	98	0	28	7	63	-19	482
	Total		335	293	42	414	0	117	38	259	-79	

* Projected

Note: RALS are releasees-at-large with warrant issued (absconded from outpatient supervision).
 Other outgo includes discharges and deaths.