

SPRING 2006 ADULT POPULATION PROJECTIONS



2006 – 2011

California Department of Corrections and Rehabilitation



CALIFORNIA DEPARTMENT OF CORRECTIONS AND REHABILITATION

J. S. WOODFORD

Secretary (A)

J. S. WOODFORD

Undersecretary

SANDRA DUVENECK

Director, Support Services (A)

JAY ATKINSON

Chief (A)

Office of Offender Information Services

JACQUI CODER

Research Manager II (A)

Estimates and Statistical Analysis Section

JACK LEONARD

Operations Research Specialist III

Population Projections Unit

JACQUI CODER

Research Manager I

JUNE DEVOE

Research Analyst II

SHELLEY BUTTLER

Research Analyst II

LORAN GARCIA

Staff Services Analyst

Cover: California Medical Facility, in Vacaville, Solano County

ACKNOWLEDGMENTS

Although the Estimates and Statistical Analysis Section is responsible for the semiannual publication of the Population Projections, others in the Department of Corrections and Rehabilitation made significant contributions that are greatly appreciated. Among those involved in the projections were (in alphabetical order) the:

- Board of Parole Hearings
- Division of Adult Institutions
- Division of Adult Parole Operations
- Office of Budget Management
- Office of Information Technology

TABLE OF CONTENTS

PAGE

EXECUTIVE SUMMARY ----- 1

SPRING 2006 ADULT POPULATION PROJECTIONS----- 5

INTRODUCTION----- 7

A. Factors Affecting Population ----- 7

B. Comparison of Spring 2006 with Fall 2005 Projections ----- 8

PREMISES----- 12

C. Felon Admissions----- 12

D. Significant Chaptered Legislation and Initiatives ----- 13

E. The Work Incentive Program (WIP)----- 13

F. Court Sentences ----- 14

G. Placement Need Projections----- 14

H. Parole Violators ----- 15

I. Felon Parole Population ----- 15

SPRING 2006 POPULATION PROJECTIONS TABLES----- 19

J. Six Year Population Projections ----- 21

K. Institution Population and Placement Needs Projections----- 25

L. Two Year Parole and Outpatient Population Projections ----- 35

EXECUTIVE SUMMARY

EXECUTIVE SUMMARY

On December 31, 2005, the adult institution population was 168,035. This is 4,096 (2.5 percent) higher than the December 31, 2004, population of 163,939. This is the result of increases in new admissions from court, parole violators returned with new terms (PV-WNT), and parole violators returned to custody (PV-RTC).

There were 50,796 new admissions from court during 2005, an increase of 1,867 (3.8 percent) over the previous year.

There were 19,777 PV-WNT returns during 2005, an increase of 1,910 (10.7 percent) compared to 2004.

There were 61,999 PV-RTC returns during 2005, an increase of 2,365 (4.0 percent) compared to 2004.

The parole population on December 31, 2005, was 115,001, or 1,233 (1.1 percent) higher than the December 31, 2004, parole population of 113,768. The primary reason for this growth is a significant increase in prison releases to parole.

The Spring 2006 projected institution population is significantly higher than projected in Fall 2005. The difference is primarily due to increased new admissions from court and PV-WNT returns. The population is projected to be 171,448 on June 30, 2006, 2,865 higher than projected in Fall 2005. On June 30, 2007, the population is projected to be 177,738, which is 5,719 higher than projected in Fall 2005. By June 30, 2011, the population is projected to be 193,195, which is 11,721 (6.5 percent) higher than Fall 2005.

The parole population is also projected to be significantly higher than projected in Fall 2005 throughout the projection cycle. This is largely due to more releases from prison resulting from the increase in the institution population, and a decrease in the projected discharge rate compared to Fall 2005. On June 30, 2006, the population is projected to be 116,596, which is 676 higher than projected in Fall 2005. On June 30, 2007, the population is projected to be 119,474, which is 2,627 higher than projected in Fall 2005. By June 30, 2011, the population is projected to be 132,252, which is 12,285 (10.2 percent) higher than Fall 2005.

SPRING 2006 ADULT POPULATION PROJECTIONS

INTRODUCTION

Following are the California Department of Corrections and Rehabilitation's (CDCR) projections of adult institution, parole, and outpatient populations for fiscal years (FY) 2005-06 through 2010-11. The projections are based upon the most current available data and include existing laws and regulations as well as any signed legislation that will come into effect during the current projections cycle. The projections do not include proposed legislation, programs, propositions, or policy changes that have not been signed or affirmed as of the beginning of the projection process.

A. Factors Affecting Population

- On December 31, 2005, the total institution population was 168,035. This is 4,096 (2.5 percent) higher than the December 31, 2004, population. This compares to an increase of 2,154 (1.3 percent) over the same time period one year ago. This increase is the result of increases in new admissions from court, parole violators returned with new terms (PV WNT), and parole violators returned to custody (PV-RTC).
- The number of new admissions (NA) from court during calendar year 2005 was 50,796. This is an increase of 3.8 percent over the NAs of 2004. New admissions in 2004 were 6.2 percent more (2,858) than those in 2003.
- There were 19,777 PV-WNT returns during 2005. This is a 10.7 percent increase (1,910) over returns in 2004. Returns in 2004 were 13.5 percent more (2,132) than those in 2003.
- There were 61,999 PV-RTC returns during 2005. This is a 4.0 percent increase (2,365) over returns in 2004. PV-RTC returns in 2004 were a 5.9 percent decrease (3,756) from those in 2003.
- The parole population on December 31, 2005, was 115,001, or 1,233 higher than the December 31, 2004, parole population. The primary reason for this growth is a significant increase in prison releases to parole.

B. Comparison of Spring 2006 with Fall 2005 Projections

1. Institution Population

The total institution population was 168,035 on December 31, 2005, or 1,635 higher than forecasted in the Fall 2005 Projections. The difference is due to more PV-RTC returns and more new admissions than projected, partially offset by more re-releases to parole than expected.

The following table compares the Spring 2006 Population Projections to the Fall 2005 Projections.

Table A

Comparison of Spring 2006 with Fall 2005 Projections
Institution Population
June 30, 2006 through June 30, 2011

<u>Year End June 30</u>	<u>Spring 2006 Projections</u>	<u>Fall 2005 Projections</u>	<u>Difference</u>
2006	171,448	168,583	2,865
2007	177,738	172,019	5,719
2008	182,811	174,994	7,817
2009	187,354	177,747	9,607
2010	190,693	179,789	10,904
2011	193,195	181,474	11,721

The Spring 2006 projected institution population is significantly higher than projected in Fall 2005. The difference is primarily due to increased new admissions from court and PV-WNT returns. The population is projected to be 171,448 on June 30, 2006, 2,865 higher than projected in Fall 2005. On June 30, 2007, the population is projected to be 177,738, which is 5,719 higher than projected in Fall 2005. By June 30, 2011, the population is projected to be 11,721 (6.5 percent) higher than the Fall 2005 Projections.

2. Parole Population

The parole population was 115,001 on December 31, 2005, or 647 lower than projected in the Fall 2005 Projections. This difference is mainly due to more suspensions and more PV-RTC returns than expected, partially offset by more re-releases to parole than expected.

Table B

Comparison of Spring 2006 with Fall 2005 Projections
Parole Population
June 30, 2006 through June 30, 2011

<u>Year End June 30</u>	<u>Spring 2006 Projections</u>	<u>Fall 2005 Projections</u>	<u>Difference</u>
2006	116,596	115,920	676
2007	119,474	116,847	2,627
2008	123,086	117,125	5,961
2009	126,079	117,447	8,632
2010	129,716	118,772	10,944
2011	132,252	119,967	12,285

The parole population is also projected to be significantly higher than forecasted in Fall 2005 throughout the projection cycle. The increase is largely due to a commensurate increase in the institution population resulting in more releases from prison, and a decrease in the projected discharge rate compared to the Fall 2005 Projections. On June 30, 2006, the population is projected to be 116,596, which is 676 higher than projected in Fall 2005. On June 30, 2007, the population is projected to be 119,474, which is 2,627 higher than projected in Fall 2005. By June 30, 2011, the population is projected to 12,285 higher than the Fall 2005 Projections.

Figures 1 and 2 graphically display the Spring 2006 Projections for the institution and parole and outpatient populations. Figure 1 shows the actual and projected institution population, while Figure 2 shows the actual and projected California supervised parole and outpatient populations. Both figures are for FY 1995-96 through 2010-11.

Figure 1
Total Institution Population
Fiscal Years 1995-96 through 2010-11

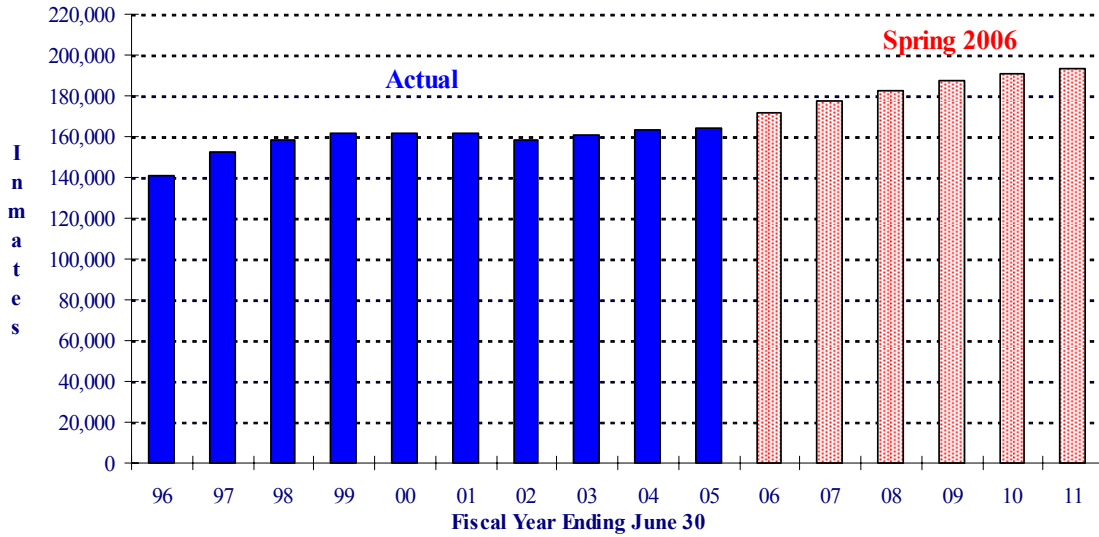
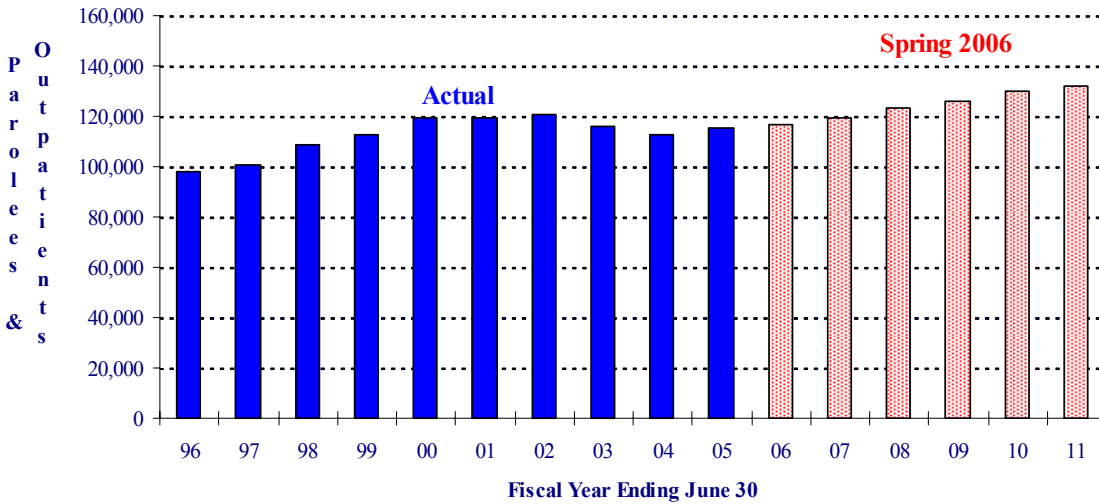


Figure 2
Total Parole Population
Fiscal Years 1995-96 through 2010-11



Figures 3 and 4 display the Spring 2006 Projections for felon admissions. Figure 3 shows the actual and projected felon admissions, while Figure 4 shows the actual and projected felon admission rates per 100,000 California residents, aged 18-49. Both figures are for FY 1995-96 through FY 2010-11.

Figure 3
Total Felon Admissions
Fiscal Years 1995-96 through 2010-11

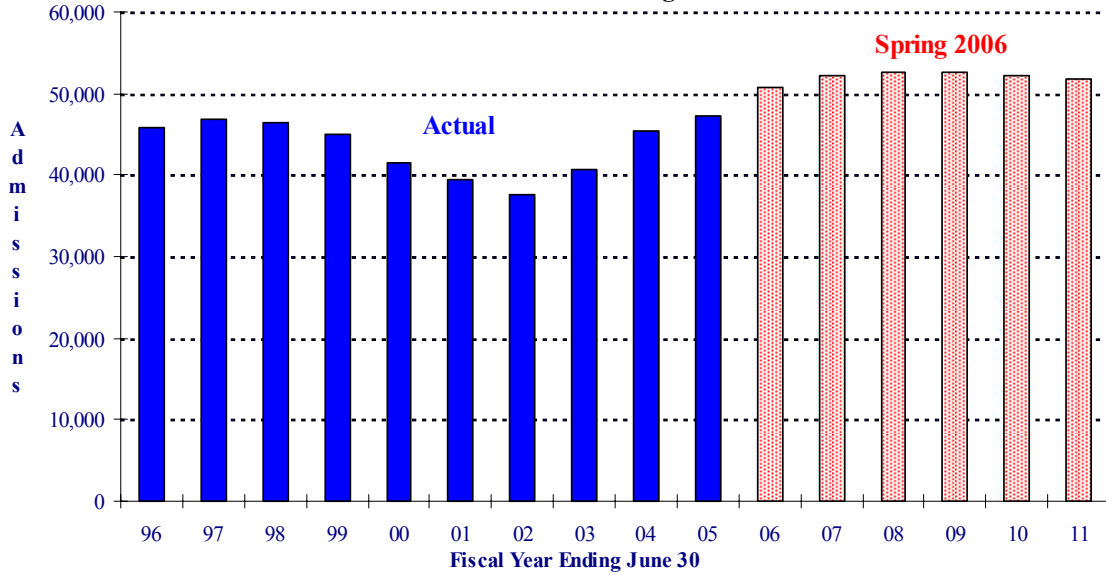
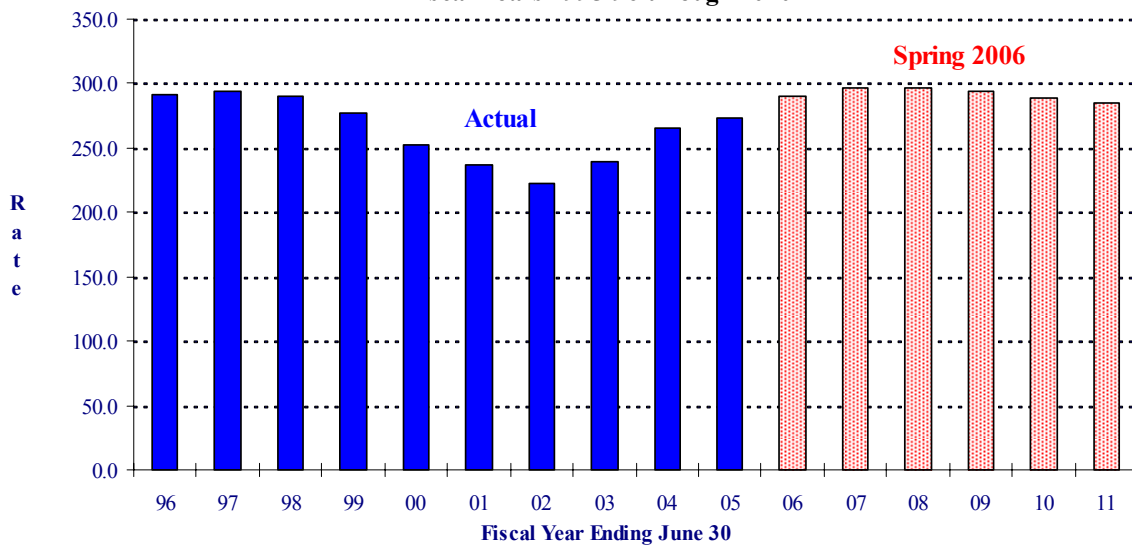


Figure 4
Total Felon Admission Rates
Fiscal Years 1995-96 through 2010-11



PREMISES

C. Felon Admissions

Table C, below, summarizes actual felon admissions to CDCR prisons from FY 1995-96 through FY 2004-05, while Table D displays the projected felon admissions for FY 2005-06 through FY 2010-11. Consistent with past practice, admission rates displayed in Tables C and D are expressed as the number of felon admissions to prison from court per 100,000 California residents aged 18-49.

Table C

Actual Total Felon Admissions
Fiscal Years 1995-96 through 2004-05

<u>Fiscal Year</u>	<u>Number of CDCR Felon Admissions*</u>	<u>State Population Aged 18-49 (In Thousands)</u>	<u>Admission Rate**</u>
1995-96	45,876	15,755.3	291.2
1996-97	46,750	15,872.7	294.5
1997-98	46,511	16,031.4	290.1
1998-99	44,983	16,215.1	277.4
1999-00	41,469	16,401.5	252.8
2000-01	39,350	16,613.3	236.9
2001-02	37,517	16,832.3	222.9
2002-03	40,617	16,997.8	239.0
2003-04	45,434	17,146.4	265.0
2004-05	47,205	17,293.5	273.0

* Not including Division of Juvenile Justice cases, other state/federal admissions, or direct admissions to parole.

** Number of CDCR felon admissions per 100,000 California state residents, aged 18-49.

The increase in admissions continued over the last FY. Felon admissions for FY 2004-05 were 47,205, up 3.9 percent from FY 2003-04. This is less than the increase in FY 2003-04, during which admissions were 11.9 percent higher than the previous FY. Admissions have been increasing for the past three FYs.

In the last six months, July to December 2005, total felon admissions were 24,775, or 6.0 percent more compared to the same time period one year ago. There was no growth in female felon admissions during the January to June 2005 time period compared to the first six months of 2004. However, female felon admissions were 7.7 percent higher in the July to December 2005 period compared to the same months last year.

As shown in Table D, the Spring 2006 felon admissions projection is higher than the Fall 2005 Projections throughout the projection cycle.

Admissions are projected based on current trends, the estimated impact of seasonality and projected state population aged 18-49.

Table D

Projected Total Felon Admissions
Fiscal Years 2005-06 through 2010-11

<u>Fiscal Year</u>	<u>Spring 2006</u>	<u>Fall 2005</u>	<u>Difference</u>	<u>Rate</u>
2005-06	50,720	47,876	2,844	290.8
2006-07	52,099	48,079	4,020	296.2
2007-08	52,601	47,903	4,698	296.5
2008-09	52,547	47,606	4,941	293.5
2009-10	52,238	47,305	4,933	289.5
2010-11	51,839	47,050	4,789	285.4

D. Significant Chaptered Legislation and Initiatives

No significant legislation affecting the State prison population has been chaptered since the Fall 2005 Population Projections.

E. The Work Incentive Program (WIP)

This program allows eligible inmates to earn up to a six-month reduction per year in sentence length. The WIP applies to all felons who committed their offenses on or after January 1, 1983 and to those felons who committed their offenses before January 1, 1983 who chose to participate. Approximately 90 percent of the June 30, 2005 eligible population was earning one-half sentence reduction and participation is expected to continue at that level throughout the projection period. The Three Strikes Law limits credit earning to 20 percent for affected inmates. The Penal Code also limits persons who have been convicted of any violent felony to no more than a 15 percent sentence reduction.

F. Court Sentences

As shown in Table E, the average sentence for newly admitted felons and PV-WNTs was 48.1 months for FY 2004-05, a significant decrease compared to FY 2003-04. This was the second consecutive year the average sentence decreased significantly. The Spring 2006 Population Projections assume that the average sentence length will be the same as projected in the Fall 2005 Population Projections, which accounted for the significant decrease.

Table E

Average Sentence and Credits
For Felon New Admissions and PV-WNTs
(in months)

<u>Fiscal Year</u>	<u>Sentence¹</u>	<u>Pre-Confinement Credits</u>
1995-96	54.1	7.1
1996-97	56.2	7.1
1997-98	54.4	6.8
1998-99	54.7	6.8
1999-00	54.4	6.9
2000-01	53.3	7.0
2001-02	53.6	7.2
2002-03	53.0	7.2
2003-04	50.5	7.1
2004-05	48.1	7.0

¹ Includes third-strike and other life commitments.

G. Placement Need Projections

As in the Fall 2005 Projections, the Spring 2006 Projections of institution bed needs, by level, consider both inmate classification score level and administrative determinants, such as institutional security and public safety, as specified in Section 62010 of the CDCR's Department Operations Manual. It is assumed that the male felon reception center population will fluctuate proportionately with the changes in male felon intake. Special housing projections assume a constant proportion of the number of inmates of each classification level in each of these categories over the projection period. The projections do not consider the impact of operational changes such as the need to single-cell Level IV inmates in the Enhanced Outpatient Program or the increase in indeterminate Security Housing Unit (SHU) terms. Each of these changes in policy or programs could result in the need for additional Level IV and SHU beds.

H. Parole Violators

For the 6-month period July to December 2005, there were 31,770 felon parole violators returned to custody or pending parole revocation (PV-RTC/PendRev), or 2,001 more than projected in the Fall 2005 Projections. The corresponding return rate was 48.4, or 3.1 points higher than projected. The assumption for the Spring 2006 Projections is that the PV-RTC/PendRev rate will be about 2.5 points higher than projected in the Fall 2005 Projections.

There were 10,156 felon PV-WNTs for the same July to December 2005 period, 407 more than projected in the Fall 2005 Projections. The corresponding felon PV-WNT return rate was 15.5, or 0.7 points higher than projected. The Spring 2006 Projections assume the PV-WNT rate will be about 1.0 point higher than projected in the Fall 2005 Projections.

The average time served for PV-RTCs and parolees continued on parole (COPs) during the July to December 2005 time period was about 3.5 months, which was lower than projected in the Fall 2005 Population Projections. The Spring 2006 Population Projections assume that the PV-RTC/COP average time served will be about eight days less than projected in the Fall 2005 Population Projections.

The graphs on the following pages illustrate actual and projected parole return numbers and rates. Figure 5 displays the actual number of felon parole violator returns by quarter since June 1996. Figure 6 shows the felon PV-RTC/PendRev rates by quarter from June 1996 to June 2011, while Figure 7 tracks the felon PV-WNT rates for the same time period.

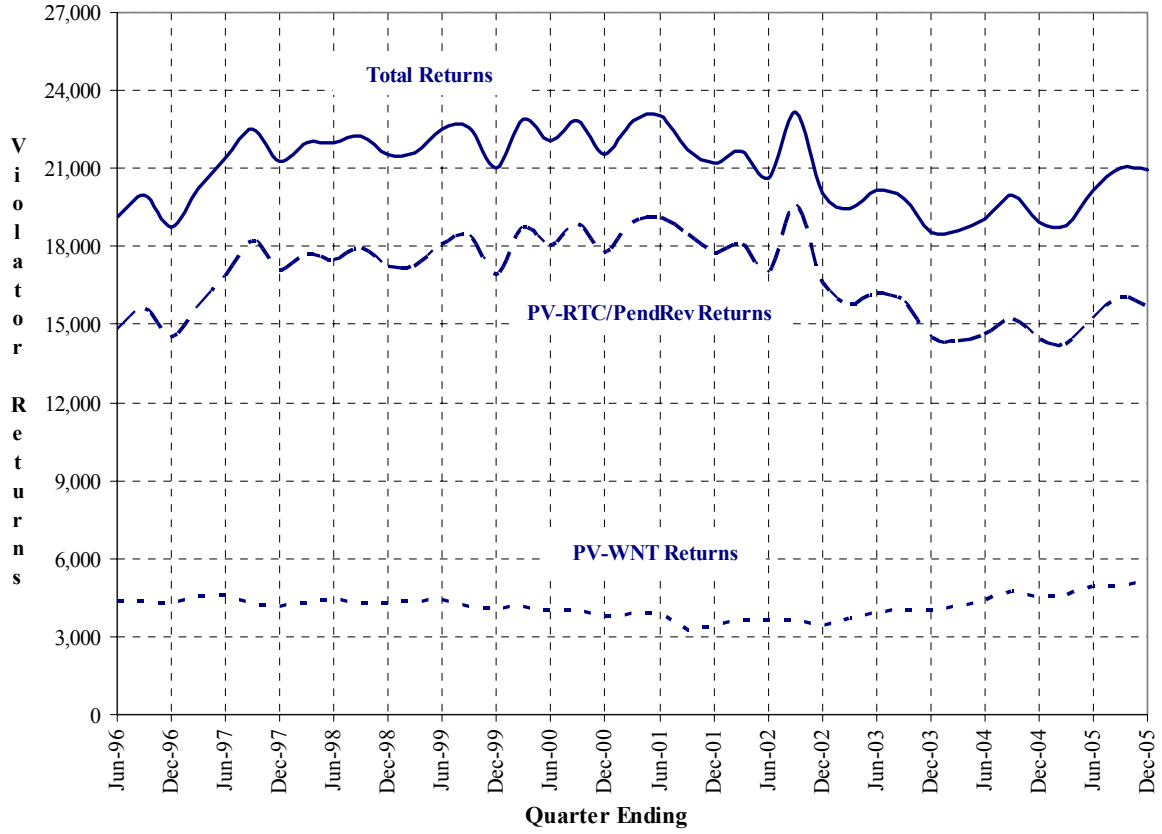
I. Felon Parole Population

On December 31, 2005, the felon parole population was 111,658, which is 532 lower than projected in the Fall 2005 Projections. Between July and December 2005, this population decreased by 218.

For the 6-month period of July to December 2005 there were 24,307 felon parolees suspended to parolee at large (PAL) status, 1,773 more than projected in the Fall 2005 Projections. The PAL rate was 43.7, or 3.3 points higher than projected. The Spring 2006 Projections assume that the felon PAL rate will be about 2.0 points higher than projected in the Fall 2005 Projections.

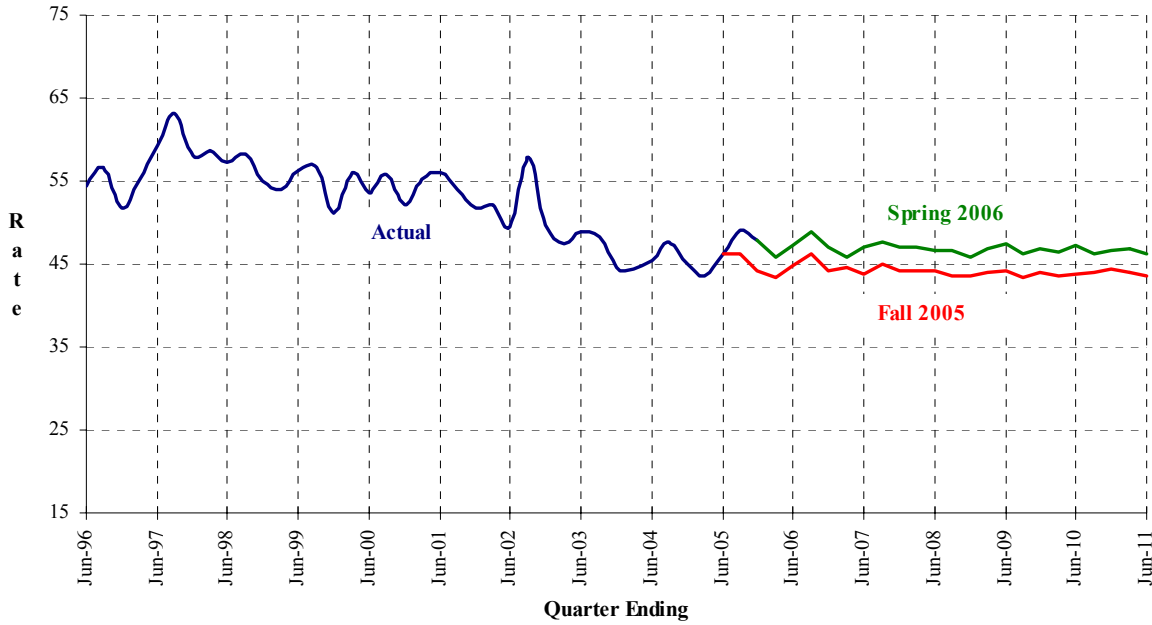
There were 18,939 felon parolees discharged from parole over the last 6 months, 413 fewer than projected in the Fall 2005 Projections. The discharge rate was 29.5, or 0.3 points lower than projected. The Spring 2006 Projections assume that the felon discharge rate will be about 1.0 points lower than projected in the Fall 2005 Projections.

Figure 5
Felon Parole Violator Returns
June 1996 through December 2005



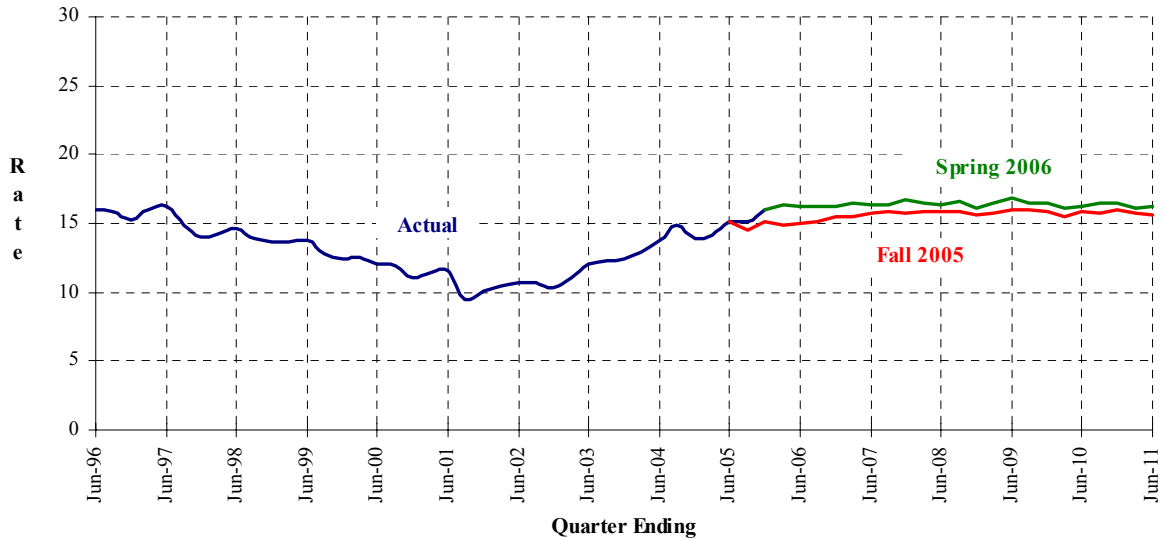
Note: PV-RTC/PendRevs are parole violators returned to custody or pending revocation.
 PV-WNTs are parole violators returned with a new term.

Figure 6
Felon PV-RTC/PendRev Rates
June 1996 through June 2011



Note: PV-RTC/PendRevs are parole violators returned to custody or pending revocation.

Figure 7
Felon PV-WNT Rates
June 1996 through June 2011



Note: PV-WNTs are parole violators returned with a new term.

SPRING 2006 POPULATION PROJECTIONS TABLES

The Spring 2006 Projections are summarized in Tables 1 and 2 and are presented in greater detail in Tables 3 through 16. Tables 3 and 4 present the quarterly institution populations, while Tables 5 and 6 present detailed projections by inmate placement needs. Tables 7 through 10 project the movement of institution populations (including civil narcotic addicts), and Tables 11 through 16 present detailed projections of the parole and outpatient populations.

J. Six Year Population Projections

Tables 1-2

Fiscal Years 2005-06 through 2010-11

Department of Corrections and Rehabilitation
State of California
02/09/2006

Population Projections Unit
Estimates and Statistical Analysis Section
Offender Information Services Branch

Spring 2006 Projections

Table 1
Institution Population
June 30, 1996 through June 30, 2011

As of June 30	Total	Total Males		Male Addicts		Male Others		Total Females		Female Felons		Female Addicts		Female Others	
		Males	Felons	Addicts	Others	Females	Felons	Addicts	Others	Addicts	Others				
Actual															
1996	141,017	131,273	128,497	2,465	311	9,744	8,975	736	33						
1997	152,506	141,669	139,239	2,163	267	10,837	10,188	583	66						
1998	158,207	147,001	144,805	1,924	272	11,206	10,594	562	50						
1999	162,064	150,581	148,621	1,703	257	11,483	10,949	495	39						
2000	162,000	150,793	148,754	1,776	263	11,207	10,620	535	52						
2001	161,497	150,785	148,853	1,668	264	10,712	10,261	403	48						
2002	157,979	148,153	146,455	1,351	347	9,826	9,453	311	62						
2003	160,931	150,851	149,449	1,104	298	10,080	9,752	270	58						
2004	163,500	152,859	151,493	1,086	280	10,641	10,339	261	41						
2005	164,179	153,323	152,016	966	341	10,856	10,528	283	45						
Projected															
2006	171,448	159,728	158,434	997	297	11,720	11,302	375	43						
2007	177,738	165,554	164,244	1,013	297	12,184	11,754	387	43						
2008	182,811	170,172	168,859	1,015	298	12,639	12,207	389	43						
2009	187,354	174,084	172,771	1,015	298	13,270	12,838	389	43						
2010	190,693	176,890	175,576	1,015	299	13,803	13,371	389	43						
2011	193,195	179,110	177,796	1,015	299	14,085	13,653	389	43						

Note: Others include county diagnostic cases, persons from other states, federal prisoners, county safekeepers, and California Youth Authority (CYA) wards.

Department of Corrections and Rehabilitation
State of California
02/09/2006

Population Projections Unit
Estimates and Statistical Analysis Section
Offender Information Services Branch

Spring 2006 Projections

Table 2
Parole and Outpatient Population
Supervised in California
June 30, 1996 through June 30, 2011

As of June 30	Total	Total Males			Male			Male			Total Females			Female		
		Males	Felons	Addicts	Felons	Addicts	Others	Felons	Addicts	Others	Females	Felons	Addicts	Felons	Addicts	Others
Actual																
1996	98,013	88,710	84,227	3,172	1,311	9,303	8,311	870	122							
1997	100,828	91,002	87,202	2,684	1,116	9,826	8,817	880	129							
1998	108,750	97,587	94,158	2,313	1,116	11,163	10,256	751	156							
1999	112,494	100,716	97,593	1,954	1,169	11,778	10,944	678	156							
2000	119,298	106,505	103,453	1,899	1,153	12,793	12,033	603	157							
2001	119,636	106,396	103,232	2,011	1,153	13,240	12,396	674	170							
2002	120,336	107,136	103,794	2,027	1,315	13,200	12,366	646	188							
2003	116,173	103,371	99,937	2,034	1,400	12,802	11,976	636	190							
2004	112,685	100,399	97,311	1,628	1,460	12,286	11,563	533	190							
2005	115,371	102,783	99,930	1,473	1,380	12,588	11,946	458	184							
Projected																
2006	116,596	103,778	101,037	1,407	1,334	12,818	12,162	473	183							
2007	119,474	106,098	103,365	1,430	1,303	13,376	12,704	488	184							
2008	123,086	109,205	106,486	1,432	1,287	13,881	13,207	490	184							
2009	126,079	111,680	108,970	1,432	1,278	14,399	13,725	490	184							
2010	129,716	114,855	112,150	1,432	1,273	14,861	14,186	490	185							
2011	132,252	116,803	114,101	1,432	1,270	15,449	14,774	490	185							

Note: Others include co-ops and other state/federal parolees.

K. Institution Population and Placement Needs Projections

Tables 3-10

Detail Fiscal Years 2005-06 and 2006-07

Fiscal Years 2005-06 through 2010-11 (Tables 5 & 6)

Department of Corrections and Rehabilitation
State of California
02/09/2006

Population Projections Unit
Estimates and Statistical Analysis Section
Offender Information Services Branch

Spring 2006 Projections

Table 3
Institution Population
Fiscal Years 2005/06 through 2006/07

	Actual June 30 2005	Sep 30 2005	Dec 31 2005	Mar 31 2006	Jun 30 2006	Sep 30 2006	Dec 31 2006	Mar 31 2007	Jun 30 2007
Total Population	164,179	166,295	168,035	169,102	171,448	173,890	174,441	175,609	177,738
Men (Inc. CCC)	153,323	155,006	156,573	157,602	159,728	161,902	162,468	163,575	165,554
Women (Inc. CCC)	10,856	11,289	11,462	11,500	11,720	11,988	11,973	12,034	12,184
Total (Exc. CCC)	158,696	161,311	163,046	163,543	165,889	168,271	168,822	169,990	172,119
Men	148,230	150,418	151,985	152,444	154,570	156,744	157,310	158,417	160,396
Felons	146,923	149,137	150,725	151,156	153,276	155,452	156,009	157,103	159,086
Civil Narcotic Addicts	966	978	969	989	997	1,004	1,010	1,015	1,013
Others 1	341	303	291	299	297	288	291	299	297
Women	10,466	10,893	11,061	11,099	11,319	11,527	11,512	11,573	11,723
Felons	10,138	10,531	10,675	10,690	10,901	11,098	11,078	11,140	11,293
Civil Narcotic Addicts	283	310	343	368	375	387	391	392	387
Others 1	45	52	43	41	43	42	43	41	43
Community Correctional Centers 2	5,483	4,984	4,989	5,559	5,559	5,619	5,619	5,619	5,619
Total Males	5,093	4,588	4,588	5,158	5,158	5,158	5,158	5,158	5,158
Male Felons	5,093	4,588	4,588	5,158	5,158	5,158	5,158	5,158	5,158
Male Civil Narcotic Addicts	0	0	0	0	0	0	0	0	0
Female Felons	390	396	401	401	401	461	461	461	461

1 Others include county diagnostic cases, other state/federal prisoners, safekeepers, and CYA wards.
2 Community Correctional Center (CCC) data are based on the bed activation schedules provided by the Parole and Institutions Divisions.

Note: Data through December 2005 are actual.

Department of Corrections and Rehabilitation
State of California
02/09/2006

Population Projections Unit
Estimates and Statistical Analysis Section
Offender Information Services Branch

Spring 2006 Projections

Table 4
Average Daily Institution Population
Fiscal Years 2005/06 through 2006/07

	FY	Sep 30	Dec 31	Mar 31	Jun 30	FY	Sep 30	Dec 31	Mar 31	Jun 30
	2005/06 Avg	2005	2005	2006	2006	2006/07 Avg	2006	2006	2007	2007
Total Population	167,702	165,162	167,103	168,274	170,271	174,564	172,691	174,095	174,764	176,707
Men (Inc. CCC)	156,331	154,065	155,732	156,853	158,674	162,608	160,854	162,131	162,845	164,601
Women (Inc. CCC)	11,372	11,097	11,371	11,421	11,597	11,957	11,837	11,964	11,919	12,107
Total (Exc. CCC)	162,470	160,094	162,115	162,960	164,712	168,948	167,082	168,476	169,145	171,088
Men	151,498	149,392	151,144	151,941	153,516	157,450	155,696	156,973	157,687	159,443
Felons	150,220	148,111	149,875	150,666	152,227	156,149	154,404	155,675	156,382	158,134
Civil Narcotic Addicts	979	965	980	979	993	1,008	1,002	1,008	1,010	1,013
Others 1	299	316	289	295	296	293	291	290	295	296
Women	10,972	10,702	10,971	11,020	11,196	11,498	11,386	11,503	11,458	11,646
Felons	10,586	10,348	10,592	10,622	10,782	11,068	10,959	11,073	11,025	11,213
Civil Narcotic Addicts	340	304	328	355	374	389	384	388	390	392
Others 1	46	50	51	42	40	42	42	41	42	40
Community Correctional Centers 2	5,232	5,068	4,988	5,313	5,559	5,616	5,609	5,619	5,619	5,619
Total Males	4,833	4,673	4,588	4,912	5,158	5,158	5,158	5,158	5,158	5,158
Male Felons	4,833	4,673	4,588	4,912	5,158	5,158	5,158	5,158	5,158	5,158
Male Civil Narcotic Addicts	0	0	0	0	0	0	0	0	0	0
Female Felons	399	395	400	401	401	458	451	461	461	461

1 Others include county diagnostic cases, other state/federal prisoners, safekeepers, and CYA wards.
2 Community Correctional Center (CCC) data are based on the bed activation schedules provided by the Parole and Institutions Divisions.

Note: Data through December 2005 are actual.

Department of Corrections and Rehabilitation
State of California
02/09/2006

Population Projections Unit
Estimates and Statistical Analysis Section
Offender Information Services Branch

Spring 2006 Projections

Table 5
Projected Placement Needs for Male Felon Institution Population
Fiscal Years 2005/06 through 2010/11

Fiscal Year	Fiscal Quarter	Reception Center	Level I	Level II	Level III	Level IV	Special PHU	Housing SHU	Total Housing	Grand Total
2005/06	September 30	24,319	32,177	32,180	36,145	26,225	21	2,658	2,679	153,725
	December 31	24,096	32,630	32,635	36,675	26,725	19	2,533	2,552	155,313
	March 31	24,120	32,619	32,955	37,045	26,990	20	2,565	2,585	156,314
	June 30	24,985	32,714	33,355	37,500	27,270	20	2,590	2,610	158,434
2006/07	September 30	24,970	33,200	34,045	38,140	27,610	20	2,625	2,645	160,610
	December 31	24,520	33,247	34,275	38,565	27,890	20	2,650	2,670	161,167
	March 31	24,640	33,306	34,495	38,965	28,150	20	2,685	2,705	162,261
	June 30	25,420	33,439	34,800	39,425	28,430	20	2,710	2,730	164,244
2007/08	June 30	25,785	33,909	35,660	41,115	29,545	20	2,825	2,845	168,859
2008/09	June 30	26,350	34,231	36,170	42,495	30,585	20	2,920	2,940	172,771
2009/10	June 30	26,520	34,396	36,450	43,615	31,560	20	3,015	3,035	175,576
2010/11	June 30	26,465	34,516	36,655	44,570	32,475	20	3,095	3,115	177,796

Note: These estimates assume that the male reception center population will increase proportionately with the increase in male felon intake.

Department of Corrections and Rehabilitation
State of California
02/09/2006

Population Projections Unit
Estimates and Statistical Analysis Section
Offender Information Services Branch

Spring 2006 Projections

Table 6
Projected Placement Needs for Total Male Institution Population
Fiscal Years 2005/06 through 2010/11

Fiscal Year	Fiscal Quarter	Reception Center	Level I	Level II	Level III	Level IV	Special PHU	Housing SHU	Total Housing	Grand Total
2005/06	September 30	24,622	32,177	33,158	36,145	26,225	21	2,658	2,679	155,006
	December 31	24,387	32,630	33,604	36,675	26,725	19	2,533	2,552	156,573
	March 31	24,419	32,619	33,944	37,045	26,990	20	2,565	2,585	157,602
	June 30	25,282	32,714	34,352	37,500	27,270	20	2,590	2,610	159,728
2006/07	September 30	25,258	33,200	35,049	38,140	27,610	20	2,625	2,645	161,902
	December 31	24,811	33,247	35,285	38,565	27,890	20	2,650	2,670	162,468
	March 31	24,939	33,306	35,510	38,965	28,150	20	2,685	2,705	163,575
	June 30	25,717	33,439	35,813	39,425	28,430	20	2,710	2,730	165,554
2007/08	June 30	26,083	33,909	36,675	41,115	29,545	20	2,825	2,845	170,172
2008/09	June 30	26,648	34,231	37,185	42,495	30,585	20	2,920	2,940	174,084
2009/10	June 30	26,819	34,396	37,465	43,615	31,560	20	3,015	3,035	176,890
2010/11	June 30	26,764	34,516	37,670	44,570	32,475	20	3,095	3,115	179,110

Note: These estimates assume that the male reception center population will increase proportionately with the increase in male felon intake. Reception Center includes others as defined on Table 1. Level II includes civil narcotic addicts.

Department of Corrections and Rehabilitation
State of California
02/09/2006

Population Projections Unit
Estimates and Statistical Analysis Section
Offender Information Services Branch

Spring 2006 Projections

Table 7
Movement of Male Felon Institution Population
Fiscal Years 2004/05 through 2006/07

Fiscal Year	Fiscal Quarter	Total Intake	From Court	PV- WNT	PV- RTC	Other Intake	Total Outgo	First Parole	PV-RTC Parole	Other Outgo	Gain/ Loss	Population End of Qtr
2004/05	Jul-Sep	28,906	10,631	4,320	14,011	-56	27,763	13,902	13,104	757	1,299	152,792
	Oct-Dec	27,294	9,819	4,086	13,335	54	28,646	14,136	13,751	759	-1,111	151,681
	Jan-Mar	27,430	10,022	4,223	13,141	44	28,778	13,925	14,215	638	-1,596	150,085
	Apr-Jun	29,479	10,932	4,580	13,917	50	27,656	14,251	12,850	555	1,931	152,016
Total		113,109	41,404	17,209	54,404	92	112,843	56,214	53,920	2,709	523	
2005/06	Jul-Sep	30,014	10,750	4,536	14,675	53	27,902	14,374	12,946	582	1,709	153,725
	Oct-Dec	30,123	10,913	4,782	14,378	50	28,611	14,538	13,503	570	1,588	155,313
	Jan-Mar	30,107	11,129	5,000	13,930	48	29,106	14,698	13,938	470	1,001	156,314
	Apr-Jun	31,182	11,741	4,968	14,422	51	29,062	15,089	13,492	481	2,120	158,434
Total		121,426	44,533	19,286	57,405	202	114,681	58,699	53,879	2,103	6,418	
2006/07	Jul-Sep	31,167	11,285	4,942	14,890	50	28,991	14,954	13,514	523	2,176	160,610
	Oct-Dec	30,602	11,169	4,999	14,384	50	30,045	15,396	14,092	557	557	161,167
	Jan-Mar	30,752	11,386	5,120	14,198	48	29,658	15,370	13,788	500	1,094	162,261
	Apr-Jun	31,729	11,934	5,110	14,634	51	29,746	15,794	13,483	469	1,983	164,244
Total		124,250	45,774	20,171	58,106	199	118,440	61,514	54,877	2,049	5,810	

* Projected

Note: Other intake includes CYA
Other outgo includes discharges and deaths.

Department of Corrections and Rehabilitation
State of California
02/09/2006

Population Projections Unit
Estimates and Statistical Analysis Section
Offender Information Services Branch

Spring 2006 Projections

Table 8
Movement of Female Felon Institution Population
Fiscal Years 2004/05 through 2006/07

Fiscal Year	Fiscal Quarter	Total Intake	From Court	PV- WNT	PV- RTC	Total Outgo	First Parole	PV-RTC Parole	Other Outgo	Gain/Loss	Population End of Qtr
2004/05	Jul-Sep	3,234	1,559	427	1,248	2,844	1,747	1,045	52	368	10,707
	Oct-Dec	2,905	1,381	381	1,143	2,954	1,742	1,145	67	-36	10,671
	Jan-Mar	2,902	1,419	376	1,107	3,085	1,806	1,229	50	-198	10,473
	Apr-Jun	3,154	1,455	387	1,312	3,039	1,836	1,163	40	55	10,528
Total		12,195	5,814	1,571	4,810	11,922	7,131	4,582	209	189	
2005/06	Jul-Sep	3,424	1,600	419	1,405	3,066	1,830	1,194	42	399	10,927
	Oct-Dec	3,333	1,529	455	1,349	3,224	1,861	1,308	55	149	11,076
	Jan-Mar	* 3,202	1,509	424	1,269	3,187	1,885	1,260	42	15	11,091
	Apr-Jun	* 3,355	1,571	424	1,360	3,144	1,894	1,215	35	211	11,302
Total		13,314	6,209	1,722	5,383	12,621	7,470	4,977	174	774	
2006/07	Jul-Sep	* 3,477	1,586	462	1,429	3,220	1,879	1,311	30	257	11,559
	Oct-Dec	* 3,357	1,518	450	1,389	3,377	1,962	1,374	41	-20	11,539
	Jan-Mar	* 3,364	1,585	453	1,326	3,302	1,923	1,339	40	62	11,601
	Apr-Jun	* 3,515	1,645	455	1,415	3,362	2,003	1,321	38	153	11,754
Total		13,713	6,334	1,820	5,559	13,261	7,767	5,345	149	452	

* Projected

Note: Other outgo includes discharges and deaths.

Department of Corrections and Rehabilitation
State of California
02/09/2006

Population Projections Unit
Estimates and Statistical Analysis Section
Offender Information Services Branch

Spring 2006 Projections

Table 9
Movement of Male Civil Narcotic Addict Institution Population
Fiscal Years 2004/05 through 2006/07

Fiscal Year	Fiscal Quarter	Total Intake	From Court	Outpatients Returned	Total Outgo	Outpatient Status	Other Outgo	Gain/Loss	Population End of Qtr
2004/05	Jul-Sep	355	138	217	412	321	91	-67	1,019
	Oct-Dec	333	161	172	368	319	49	-25	994
	Jan-Mar	364	177	187	370	293	77	-15	979
	Apr-Jun	383	209	174	407	307	100	-13	966
Total		1,435	685	750	1,557	1,240	317	-120	
2005/06	Jul-Sep	357	158	199	334	242	92	12	978
	Oct-Dec	317	154	163	310	254	56	-9	969
	Jan-Mar	381	176	205	361	334	27	20	989
	Apr-Jun	375	172	203	367	323	44	8	997
Total		1,430	660	770	1,372	1,153	219	31	
2006/07	Jul-Sep	376	172	204	369	321	48	7	1,004
	Oct-Dec	379	173	206	373	324	49	6	1,010
	Jan-Mar	379	173	206	374	323	51	5	1,015
	Apr-Jun	373	170	203	375	314	61	-2	1,013
Total		1,507	688	819	1,491	1,282	209	16	

* Projected

Note: Other outgo includes discharges and deaths.

Department of Corrections and Rehabilitation
State of California
02/09/2006

Population Projections Unit
Estimates and Statistical Analysis Section
Offender Information Services Branch

Spring 2006 Projections

Table 10
Movement of Female Civil Narcotic Addict Institution Population
Fiscal Years 2004/05 through 2006/07

Fiscal Year	Fiscal Quarter	Total Intake	From Court	Outpatients Returned	Total Outgo	Outpatient Status	Other Outgo	Gain/Loss	Population End of Qtr
2004/05	Jul-Sep	83	48	35	79	67	12	7	268
	Oct-Dec	66	42	24	75	67	8	-10	258
	Jan-Mar	99	70	29	88	76	12	14	272
	Apr-Jun	98	70	28	83	70	13	11	283
Total		346	230	116	325	280	45	22	
2005/06	Jul-Sep	97	65	32	68	53	15	27	310
	Oct-Dec	99	70	29	69	61	8	34	343
	Jan-Mar	* 120	85	35	95	79	16	25	368
	Apr-Jun	* 106	75	31	99	60	39	7	375
Total		422	295	127	331	253	78	93	
2006/07	Jul-Sep	* 115	81	34	103	68	35	12	387
	Oct-Dec	* 109	75	34	105	59	46	4	391
	Jan-Mar	* 106	73	33	105	55	50	1	392
	Apr-Jun	* 100	68	32	105	48	57	-5	387
Total		430	297	133	418	230	188	12	

* Projected

Note: Other outgo includes discharges and deaths.

L. Two Year Parole and Outpatient Population Projections

Tables 11-16

Detail Fiscal Years 2005-06 and 2006-07

Department of Corrections and Rehabilitation
State of California
02/09/2006

Population Projections Unit
Estimates and Statistical Analysis Section
Offender Information Services Branch

Spring 2006 Projections

Table 11
California Supervised Parole and Outpatient Population
Fiscal Years 2005/06 through 2006/07

	Actual June 30 2005	Sep 30 2005	Dec 31 2005	Mar 31 2006	Jun 30 2006	Sep 30 2006	Dec 31 2006	Mar 31 2007	Jun 30 2007
Total Men and Women	115,371	114,163	115,001	116,295	116,596	116,424	118,154	119,142	119,474
Felons	111,876	110,796	111,658	112,908	113,199	113,012	114,736	115,723	116,069
Outpatients	1,931	1,819	1,802	1,859	1,880	1,904	1,918	1,926	1,918
Others 1	1,564	1,548	1,541	1,528	1,517	1,508	1,500	1,493	1,487
Total Men	102,783	101,782	102,500	103,508	103,778	103,607	105,099	105,960	106,098
Felons	99,930	99,037	99,774	100,768	101,037	100,866	102,358	103,219	103,365
Outpatients	1,473	1,384	1,368	1,395	1,407	1,416	1,425	1,432	1,430
Others 1	1,380	1,361	1,358	1,345	1,334	1,325	1,316	1,309	1,303
Total Women	12,588	12,381	12,501	12,787	12,818	12,817	13,055	13,182	13,376
Felons	11,946	11,759	11,884	12,140	12,162	12,146	12,378	12,504	12,704
Outpatients	458	435	434	464	473	488	493	494	488
Others 1	184	187	183	183	183	183	184	184	184

1 Others include co-ops and other state/federal parolees.

Note: Data through December 2005 are actual.

Department of Corrections and Rehabilitation
State of California
02/09/2006

Population Projections Unit
Estimates and Statistical Analysis Section
Offender Information Services Branch

Spring 2006 Projections

Table 12
Average Daily Parole and Outpatient Population
Fiscal Years 2005/06 through 2006/07

	FY 2005/06		Sep 30 2005	Dec 31 2005	Mar 31 2006	Jun 30 2006	FY 2006/07		Sep 30 2006	Dec 31 2006	Mar 31 2007	Jun 30 2007
	Avg						Avg					
Total Men and Women	115,344	114,756	114,484	115,705	116,430	117,946	116,555	117,382	118,638	119,210		
Felons	111,958	111,304	111,150	112,341	113,035	114,533	113,144	113,966	115,224	115,798		
Outpatients	1,841	1,877	1,786	1,830	1,872	1,912	1,898	1,912	1,916	1,922		
Others 1	1,545	1,574	1,547	1,535	1,523	1,501	1,513	1,504	1,497	1,490		
Total Men	102,770	102,313	102,080	103,061	103,627	104,887	103,707	104,434	105,490	105,918		
Felons	100,015	99,494	99,353	100,328	100,886	102,148	100,964	101,691	102,752	103,183		
Outpatients	1,395	1,433	1,364	1,381	1,401	1,422	1,413	1,422	1,425	1,429		
Others 1	1,360	1,386	1,363	1,352	1,340	1,318	1,330	1,321	1,313	1,306		
Total Women	12,573	12,442	12,404	12,644	12,803	13,059	12,848	12,948	13,147	13,292		
Felons	11,942	11,810	11,797	12,013	12,148	12,385	12,180	12,275	12,472	12,614		
Outpatients	447	444	423	449	472	490	485	489	491	494		
Others 1	185	188	184	183	183	184	183	183	184	184		

1 Others include co-ops and other state/federal parolees.

Note: Data through December 2005 are actual.

Department of Corrections and Rehabilitation
State of California
02/09/2006

Population Projections Unit
Estimates and Statistical Analysis Section
Offender Information Services Branch

Spring 2006 Projections

Table 13
Movement of Male Felon Parole Population
Fiscal Years 2004/05 through 2006/07

Fiscal Year	Fiscal Quarter	Total Intake	Paroled	Reinstated	Other Intake	Total Outgo	PV- WNT	PV- RIC	PALS	Other Outgo	Gain/Loss	Population End of Qtr
2004/05	Jul-Sep	34,935	26,961	7,618	356	35,484	4,118	12,127	9,752	9,487	-451	96,860
	Oct-Dec	35,076	27,850	6,884	342	33,288	3,908	11,532	8,925	8,923	1,744	98,604
	Jan-Mar	35,785	28,126	7,282	377	33,775	4,034	11,287	9,287	9,167	2,049	100,653
	Apr-Jun	35,120	27,081	7,656	383	35,790	4,349	11,777	10,648	9,016	-723	99,930
Total		140,916	110,018	29,440	1,458	138,337	16,409	46,723	38,612	36,593	2,619	
2005/06	Jul-Sep	35,578	27,284	7,996	298	36,820	4,272	12,356	11,334	8,858	-893	99,037
	Oct-Dec	35,805	28,003	7,626	176	35,172	4,522	12,083	10,200	8,367	737	99,774
	Jan-Mar	36,405	28,636	7,490	279	35,411	4,724	11,759	10,232	8,696	994	100,768
	Apr-Jun	36,716	28,581	7,842	293	36,447	4,689	12,046	10,647	9,065	269	101,037
Total		144,504	112,504	30,954	1,046	143,850	18,207	48,244	42,413	34,986	1,107	
2006/07	Jul-Sep	36,761	28,468	8,005	288	36,932	4,670	12,610	10,616	9,036	-171	100,866
	Oct-Dec	37,516	29,488	7,741	287	36,024	4,696	12,071	10,446	8,811	1,492	102,358
	Jan-Mar	37,412	29,158	7,965	289	36,551	4,865	11,901	10,546	9,239	861	103,219
	Apr-Jun	37,349	29,277	7,769	303	37,203	4,857	12,359	10,828	9,159	146	103,365
Total		149,038	116,391	31,480	1,167	146,710	19,088	48,941	42,436	36,245	2,328	

* Projected

Note: Other intake includes transfers direct from court, interstate parole unit (ISPU), and co-ops.
PALS are parolees-at-large with warrant issued (absconded from parole supervision).
Other outgo includes transfers to ISPU, discharges and deaths.

Department of Corrections and Rehabilitation
State of California
02/09/2006

Population Projections Unit
Estimates and Statistical Analysis Section
Offender Information Services Branch

Spring 2006 Projections

Table 14
Movement of Female Felon Parole Population
Fiscal Years 2004/05 through 2006/07

Fiscal Year	Fiscal Quarter	Total Intake	Paroled	Reinstated	Other Intake	Total Outgo	PV- WNT	PV- RTC	PALS	Other Outgo	Gain/Loss	Population End of Qtr
2004/05	Jul-Sep	3,860	2,787	1,004	69	4,010	409	1,057	1,243	1,301	-170	11,393
	Oct-Dec	3,840	2,882	895	63	3,713	356	969	1,147	1,241	133	11,526
	Jan-Mar	4,083	3,034	998	51	3,716	362	927	1,176	1,251	372	11,898
	Apr-Jun	4,100	2,996	1,050	54	4,061	363	1,084	1,346	1,268	48	11,946
Total		15,883	11,699	3,947	237	15,500	1,490	4,037	4,912	5,061	383	
2005/06	Jul-Sep	4,090	3,023	1,023	44	4,297	397	1,170	1,466	1,264	-187	11,759
	Oct-Dec	4,198	3,165	1,015	18	4,075	437	1,118	1,307	1,213	125	11,884
	Jan-Mar	4,244	3,145	1,056	43	3,988	401	1,058	1,215	1,314	256	12,140
	Apr-Jun	4,236	3,109	1,079	48	4,214	406	1,128	1,369	1,311	22	12,162
Total		16,768	12,442	4,173	153	16,574	1,641	4,474	5,357	5,102	216	
2006/07	Jul-Sep	4,358	3,190	1,118	50	4,374	436	1,192	1,416	1,330	-16	12,146
	Oct-Dec	4,401	3,336	1,024	41	4,169	425	1,161	1,288	1,295	232	12,378
	Jan-Mar	4,348	3,262	1,041	45	4,222	428	1,101	1,362	1,331	126	12,504
	Apr-Jun	4,535	3,324	1,162	49	4,335	431	1,172	1,386	1,346	200	12,704
Total		17,642	13,112	4,345	185	17,100	1,720	4,626	5,452	5,302	542	

* Projected

Note: Other intake includes transfers direct from court, interstate parole unit (ISPU), and co-ops.
PALS are parolees-at-large with warrant issued (absconded from parole supervision).
Other outgo includes transfers to ISPU, discharges and deaths.

Department of Corrections and Rehabilitation
State of California
02/09/2006

Population Projections Unit
Estimates and Statistical Analysis Section
Offender Information Services Branch

Spring 2006 Projections

Table 15
Movement of Male Civil Narcotic Addict Outpatient Population
Fiscal Years 2004/05 through 2006/07

Fiscal Year	Fiscal Quarter	Total Intake	Released from Institution	Reinstated	Total Outgo	PV- WNT	PV- RTC	RALS	Other Outgo	Gain/ Loss	Population End of Qtr
2004/05	Jul-Sep	374	321	53	411	2	202	68	139	-29	1,599
	Oct-Dec	371	319	52	408	5	156	56	191	-41	1,558
	Jan-Mar	338	293	45	404	6	166	79	153	-64	1,494
	Apr-Jun	352	307	45	371	5	154	55	157	-21	1,473
Total		1,435	1,240	195	1,594	18	678	258	640	-155	
2005/06	Jul-Sep	292	242	50	383	5	181	76	121	-89	1,384
	Oct-Dec	296	254	42	313	5	142	52	114	-16	1,368
	Jan-Mar	379	334	45	352	3	184	76	89	27	1,395
	Apr-Jun	369	323	46	357	3	182	75	97	12	1,407
Total		1,336	1,153	183	1,405	16	689	279	421	-66	
2006/07	Jul-Sep	369	321	48	360	3	183	76	98	9	1,416
	Oct-Dec	372	324	48	363	3	185	77	98	9	1,425
	Jan-Mar	370	323	47	363	3	184	76	100	7	1,432
	Apr-Jun	362	314	48	364	3	182	74	105	-2	1,430
Total		1,473	1,282	191	1,450	12	734	303	401	23	

* Projected

Note: RALS are releasees-at-large with warrant issued (absconded from outpatient supervision).
Other outgo includes discharges and deaths.

Department of Corrections and Rehabilitation
State of California
02/09/2006

Population Projections Unit
Estimates and Statistical Analysis Section
Offender Information Services Branch

Spring 2006 Projections

Table 16
Movement of Female Civil Narcotic Addict Outpatient Population
Fiscal Years 2004/05 through 2006/07

Fiscal Year	Fiscal Quarter	Total Intake	Released from Institution	Reinstated	Total Outgo	PV-WNT	PV-RTC	RALS	Other Outgo	Gain/Loss	Population End of Qtr
2004/05	Jul-Sep	75	67	8	81	2	28	15	36	-8	525
	Oct-Dec	76	67	9	105	1	21	13	70	-34	491
	Jan-Mar	89	76	13	105	0	28	18	59	-17	474
	Apr-Jun	76	70	6	92	0	22	12	58	-16	458
Total		316	280	36	383	3	99	58	223	-75	
2005/06	Jul-Sep	62	53	9	86	0	29	15	42	-23	435
	Oct-Dec	73	61	12	75	0	28	11	36	-1	434
	Jan-Mar	95	79	16	65	0	32	23	10	30	464
	Apr-Jun	78	60	18	69	0	28	22	19	9	473
Total		308	253	55	295	0	117	71	107	15	
2006/07	Jul-Sep	86	68	18	71	0	31	23	17	15	488
	Oct-Dec	77	59	18	72	0	31	22	19	5	493
	Jan-Mar	73	55	18	72	0	30	21	21	1	494
	Apr-Jun	66	48	18	72	0	29	20	23	-6	488
Total		302	230	72	287	0	121	86	80	15	

* Projected

Note: RALS are releases-at-large with warrant issued (absconded from outpatient supervision).
Other outgo includes discharges and deaths.