

CALIFORNIA DEPARTMENT OF CORRECTIONS AND
REHABILITATION

OFFICE OF RESEARCH
JUVENILE RESEARCH BRANCH

**MONTHLY POPULATION
TRENDS**
FOR THE DIVISION OF JUVENILE JUSTICE
December 2011

IMPORTANT INFORMATION:

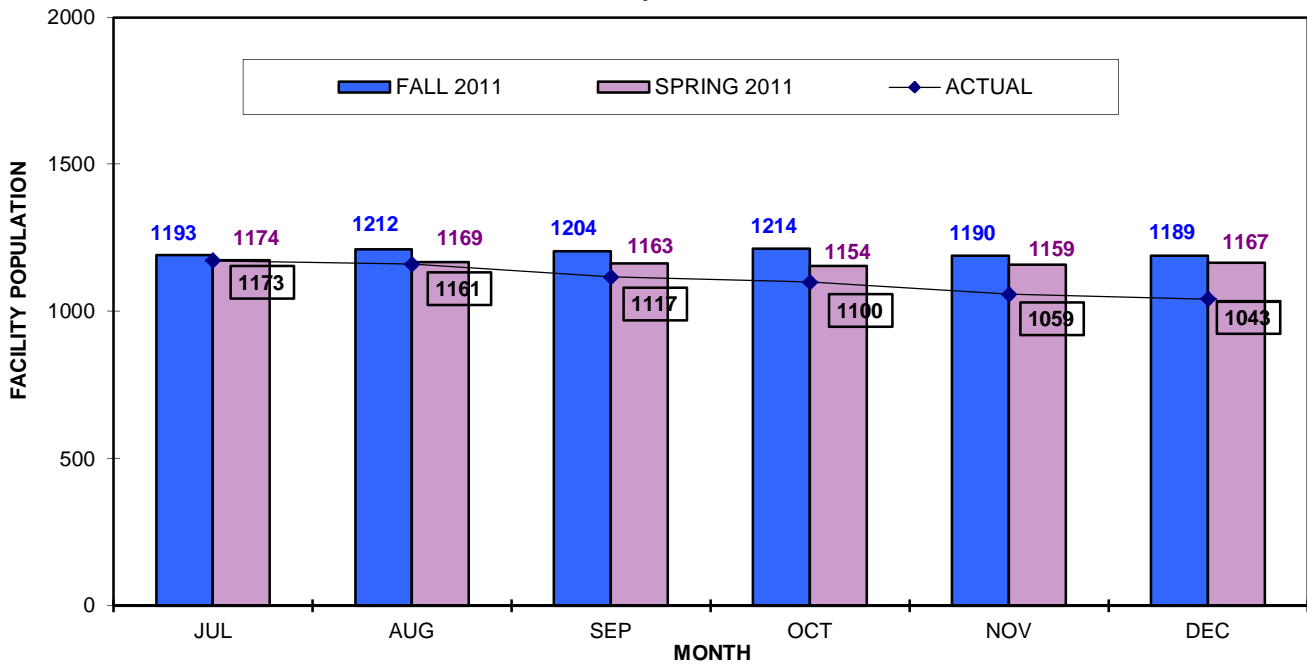
Data for the monthly trends are obtained from the Offender Based Information Tracking System (OBITS) and based on the process date. The numbers reported are for the Division of Juvenile Justice (DJJ) Facility and Parole populations and do not include information on the cases currently housed in the Division of Adult Institutions – *on December 31, 2011, there were 40 such cases housed in Adult Institutions* – these are cases committed to DJJ, but have subsequently received an Adult term and have elected to be housed in an Adult Institution, based on the McPherson ruling.

Juvenile Court and Superior Court direct commitments are cases that the court has committed to the DJJ. The M and E cases are Superior Court commitments that were committed to an Adult Institution, but ordered by the Court to be housed in a DJJ Facility until their 18th or 21st birthday depending on the length of their sentence (W&I 1731.5(c) – M Cases) or State law requires that those under 18 are provided with education, available at DJJ (E Cases).

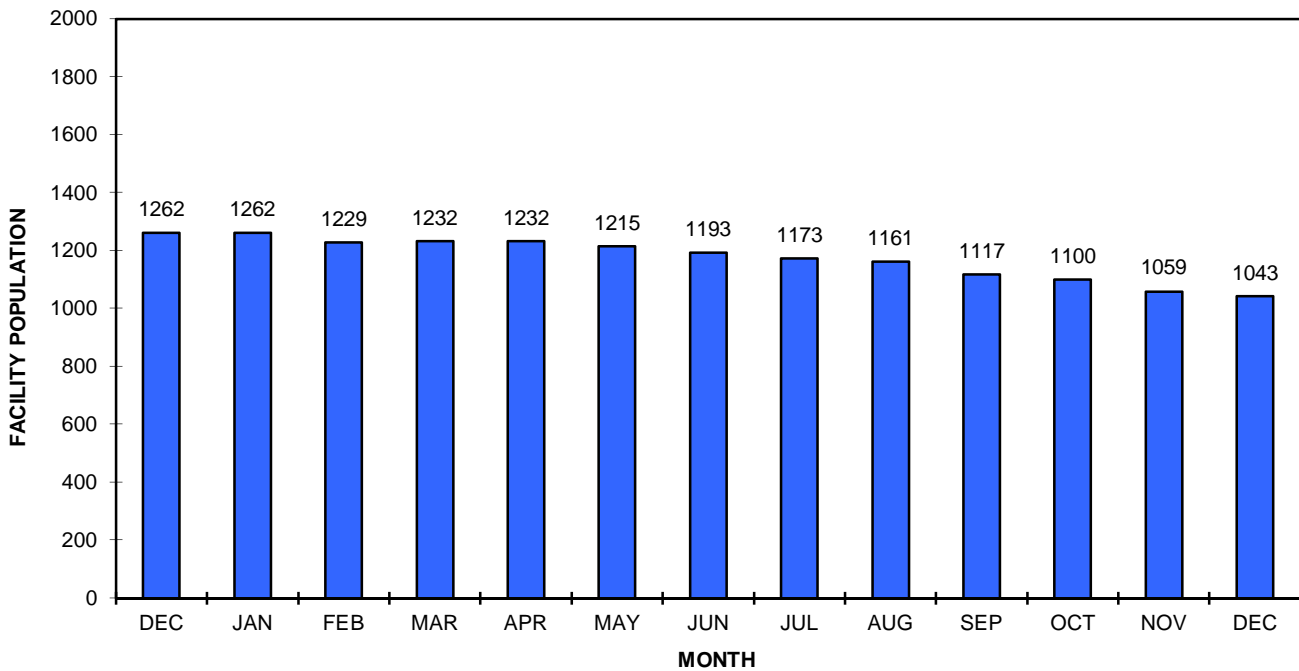
The Juvenile Parole Board has established guidelines (Title 15) for setting baseline Projected Board Dates (PBDs). These dates are established at acceptance to DJJ, based on the most recent offense. The Board Hearing category is based on the most serious offense. The PBD will never exceed the maximum sentence given by the Court. The tables reflect extensions/credits given to youth who are housed in a DJJ Facility and separate First/Re-Commitments and Parole Violators. Tables 14 through 17 are displaying data for all DJJ Facilities. Tables 18 through 25 are displaying data for each DJJ Facility individually. Youth housed in an Adult Institution (DAI) or in a Department of Mental Health Facility are reported separately in Tables 26 and 27.

The attached charts should not be compared to the Weekly Population Report due to differences in time periods and data source.

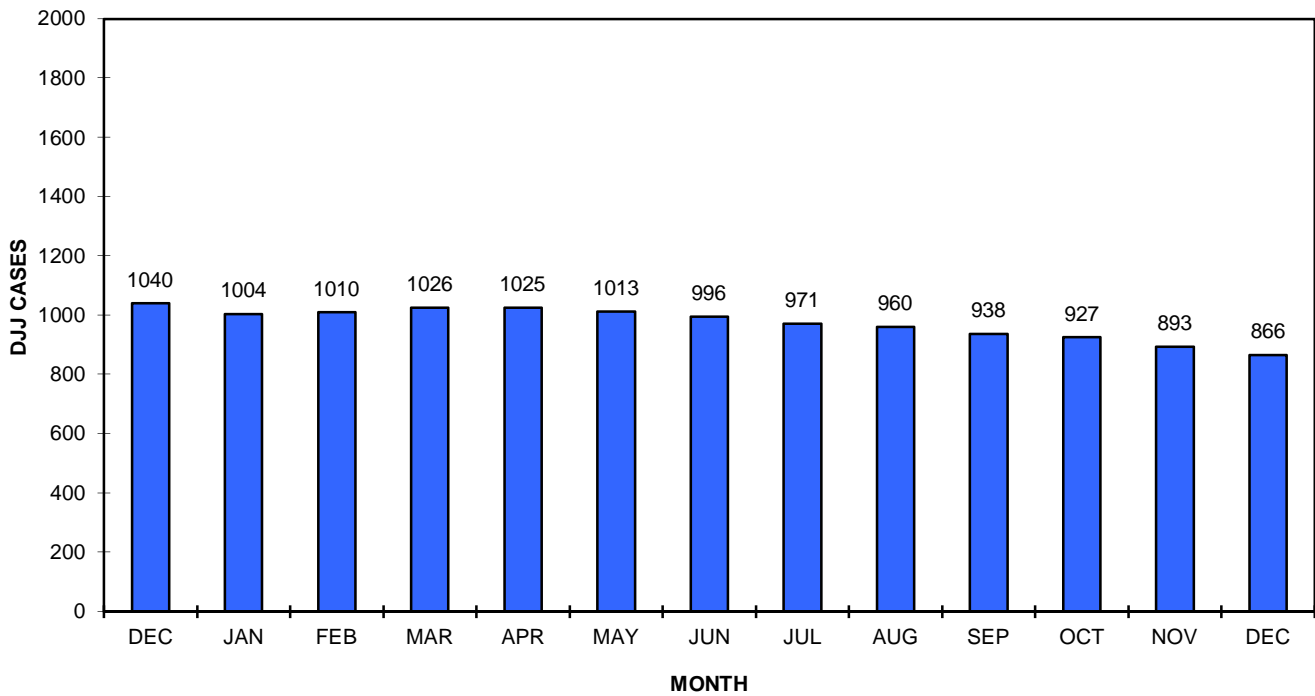
**CHART 1 - DJJ FACILITIES
COMPARISON OF FACILITY POPULATION (ALL CASE TYPES)
WITH SPRING 2011 AND FALL 2011 PROJECTIONS
End of Month, July 2011 thru December 2011**



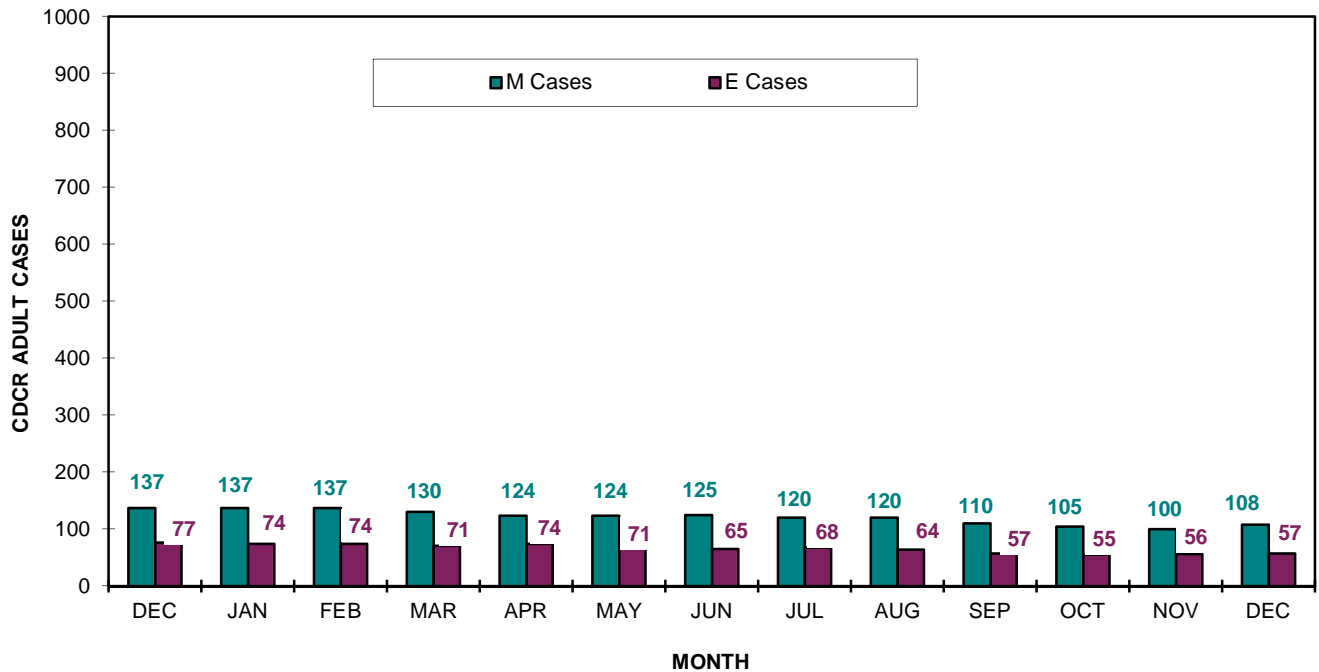
**CHART 2 - DJJ FACILITIES
OVERALL FACILITY POPULATION (ALL CASE TYPES)
End of Month, December 2010 thru December 2011**



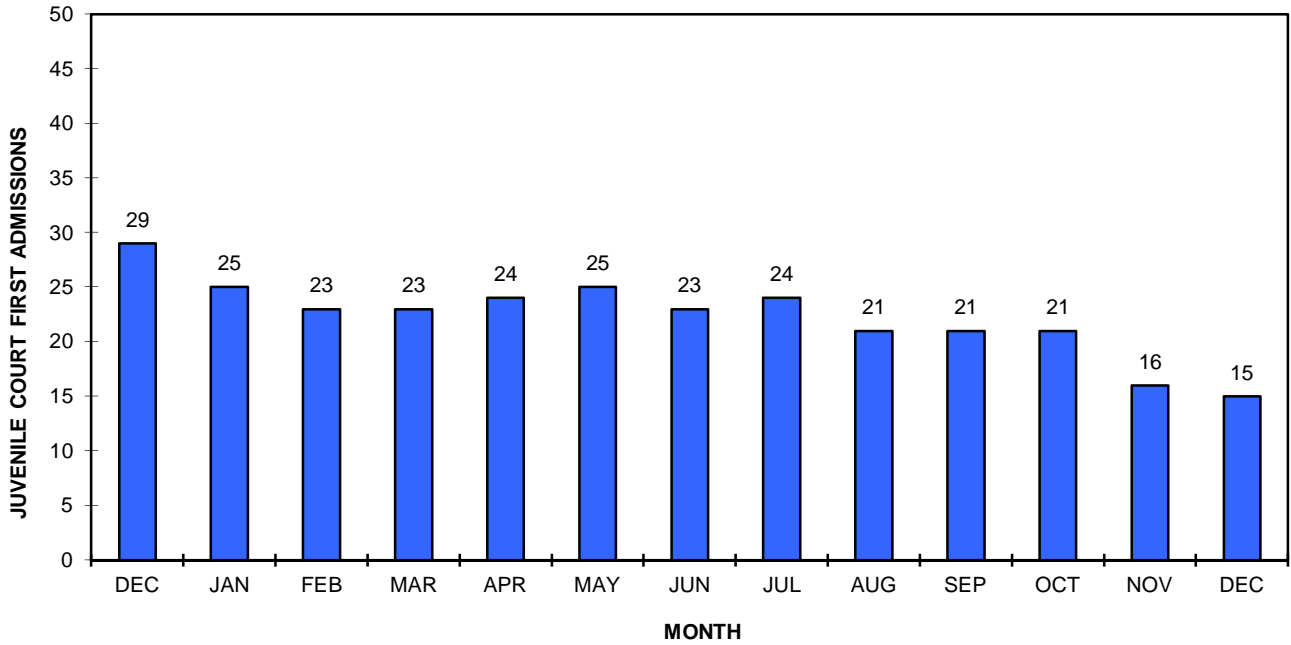
**CHART 3 - DJJ FACILITIES
FACILITY POPULATION - EXCLUDING M AND E CASES
End of Month, December 2010 thru December 2011**



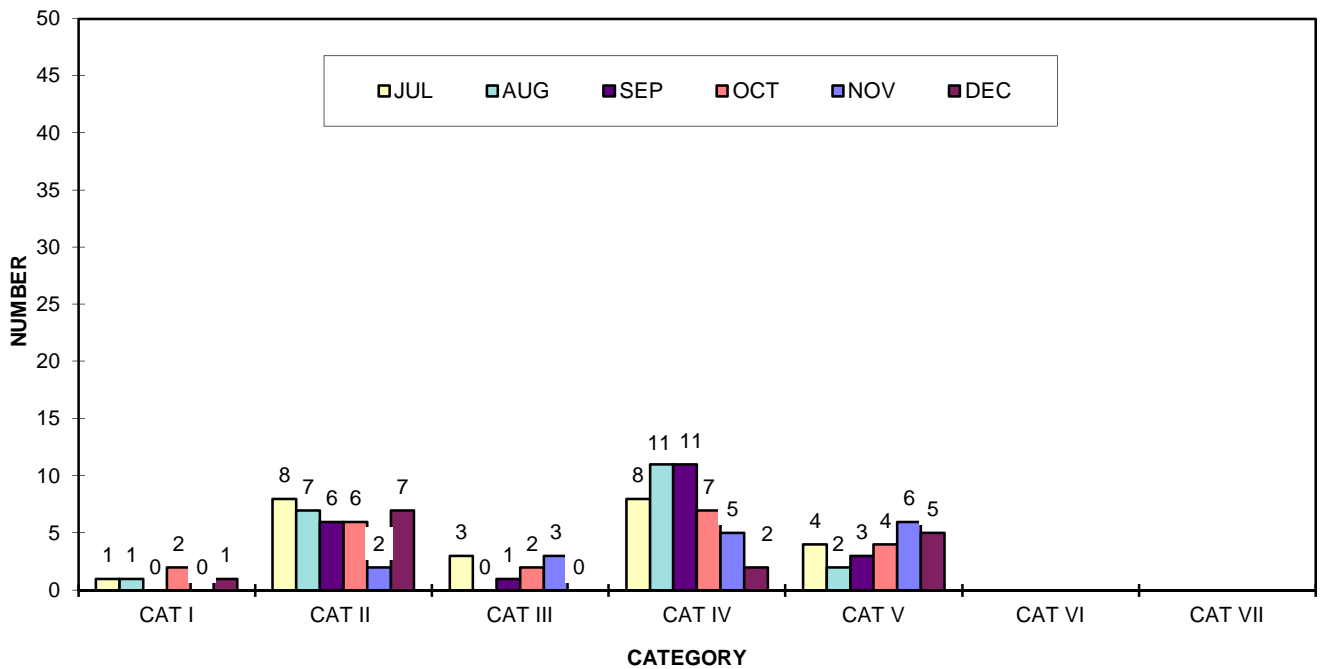
**CHART 4 - DJJ FACILITIES
M and E CASES IN FACILITY POPULATION
End of Month, December 2010 thru December 2011**



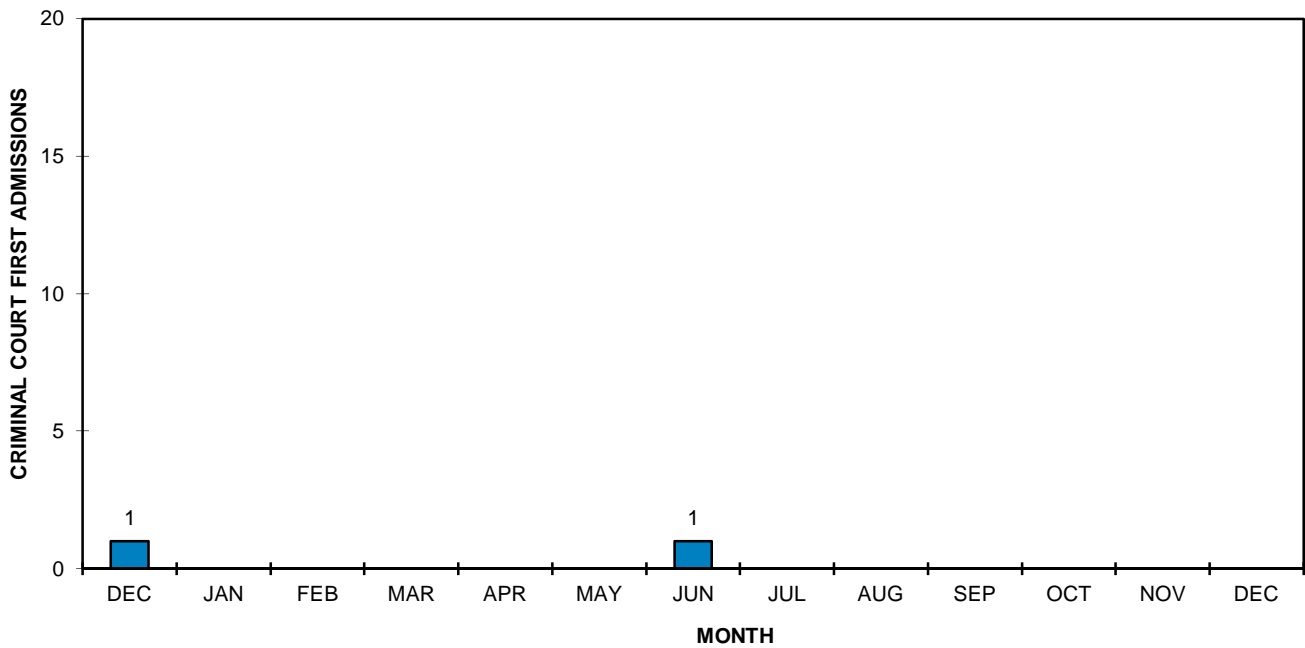
**CHART 5 - DJJ FACILITIES
JUVENILE COURT FIRST ADMISSIONS
By Month, December 2010 thru December 2011**



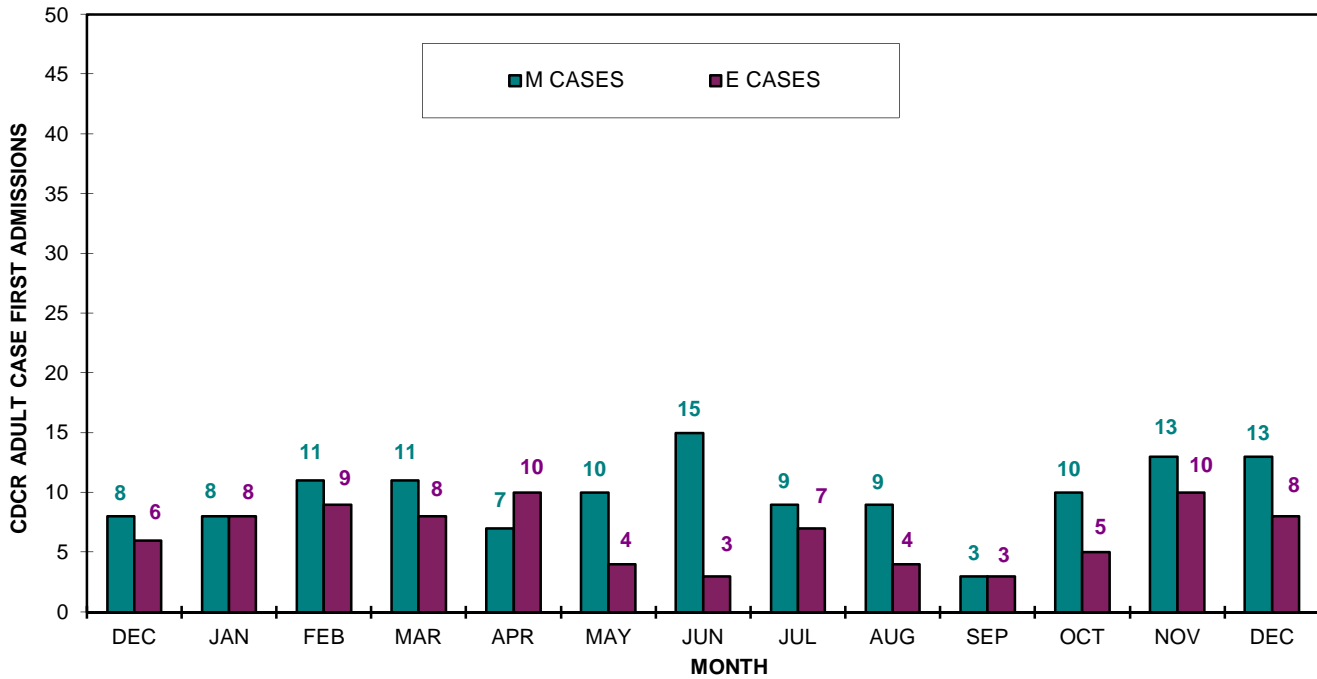
**CHART 6
JUVENILE PAROLE BOARD HEARING CATEGORIES
FOR JUVENILE COURT FIRST ADMISSIONS
Assigned July 2011 thru December 2011**



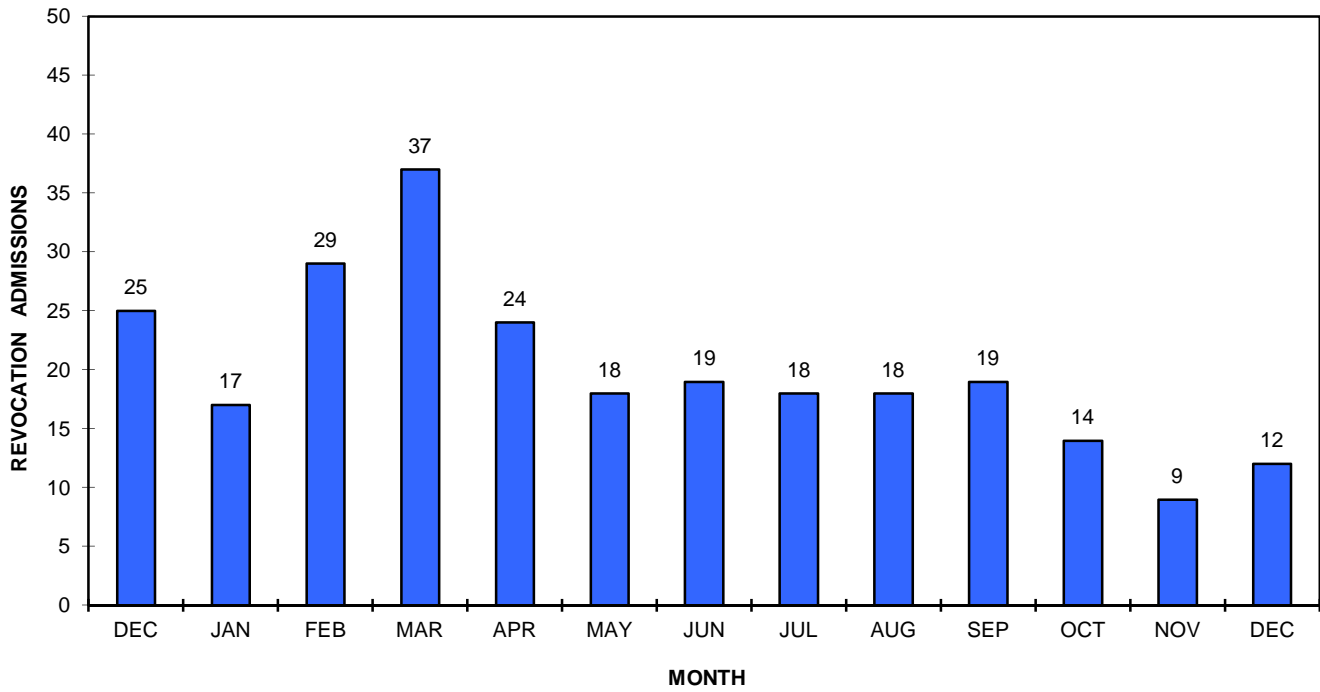
**CHART 7 - DJJ FACILITIES
SUPERIOR COURT DIRECT COMMITMENTS - FIRST ADMISSIONS
By Month, December 2010 thru December 2011**



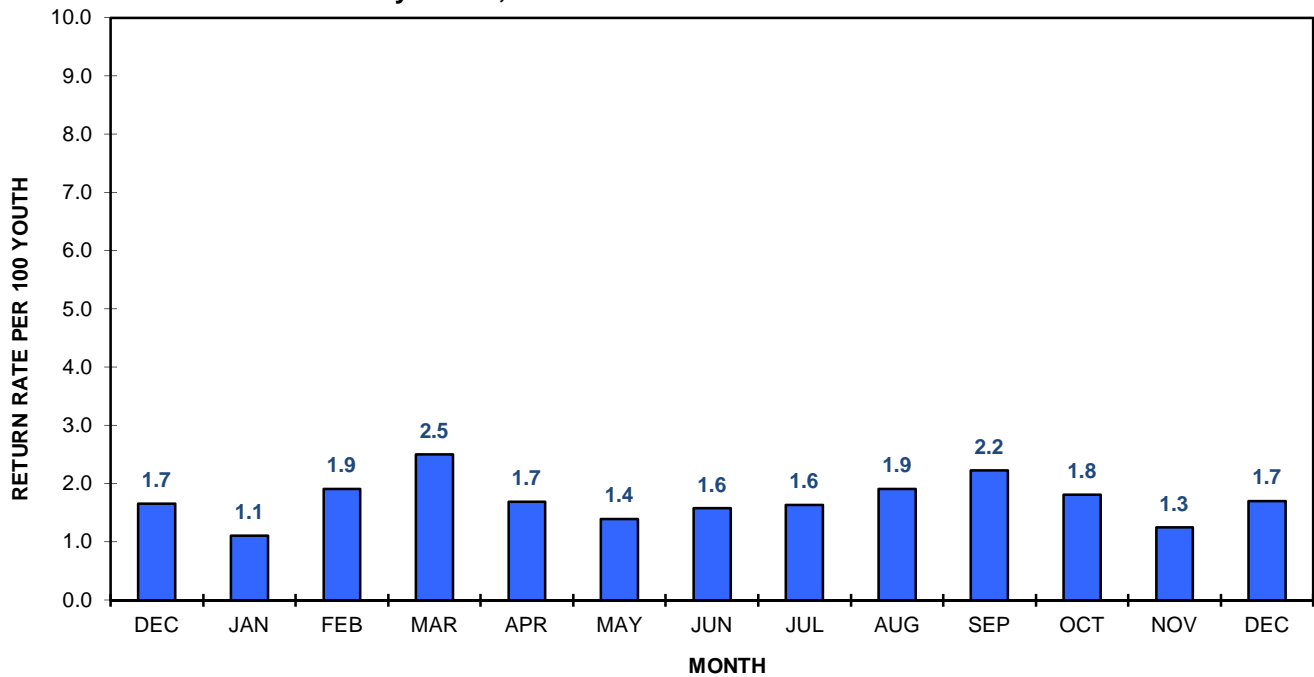
**CHART 8 - DJJ FACILITIES
M AND E CASE FIRST ADMISSIONS
By Month, December 2010 thru December 2011**



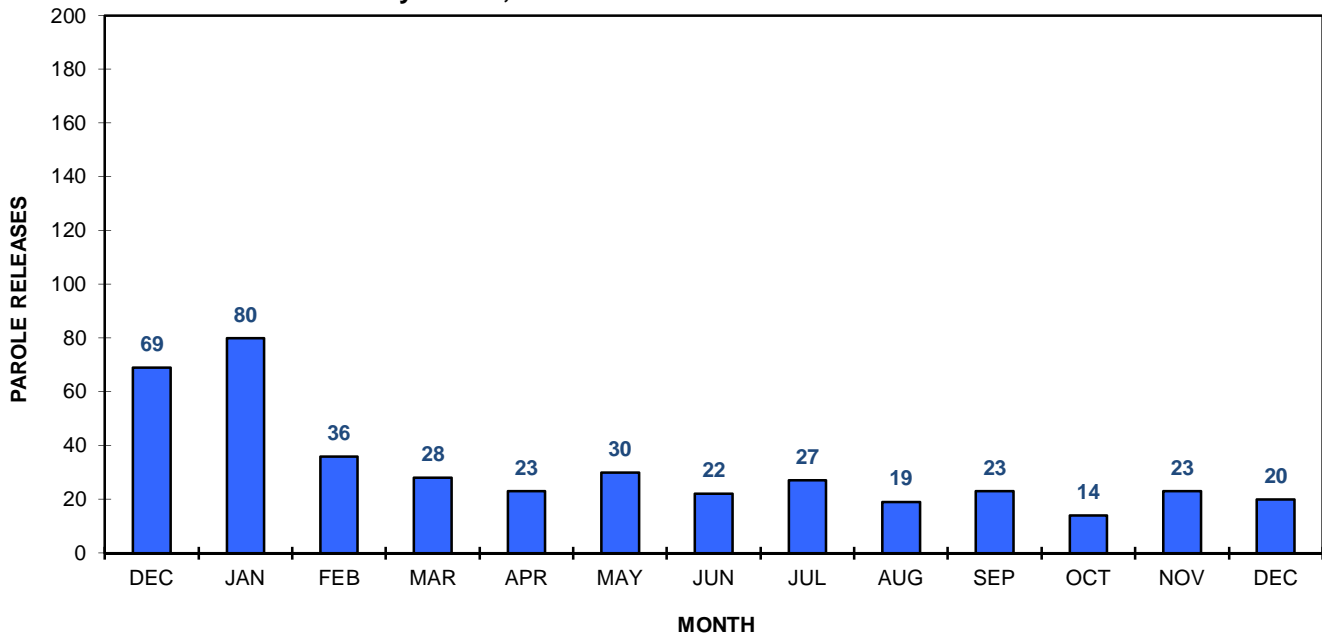
**CHART 9 - DJJ FACILITIES
 REVOCATION ADMISSIONS - DJJ CASES
 By Month, December 2010 thru December 2011**



**CHART 9(a) - DJJ FACILITIES
 REVOCATION RETURN RATE (per 100 Youth) - DJJ CASES
 BASED ON PAROLE'S AVERAGE DAILY POPULATION
 By Month, December 2010 thru December 2011**



**CHART 10 - DJJ FACILITIES
RELEASES TO PAROLE***
By Month, December 2010 thru December 2011



*Per AB1628 - First Admission cases are no longer released to DJJ Parole (as of January 19, 2011), they must be returned to the County of Commitment for disposition. The releases to parole after January 2011, are parole violators.

**CHART 11
PAROLE POPULATION - CALIFORNIA AND OUT OF STATE - DJJ CASES**
End of Month, December 2010 thru December 2011

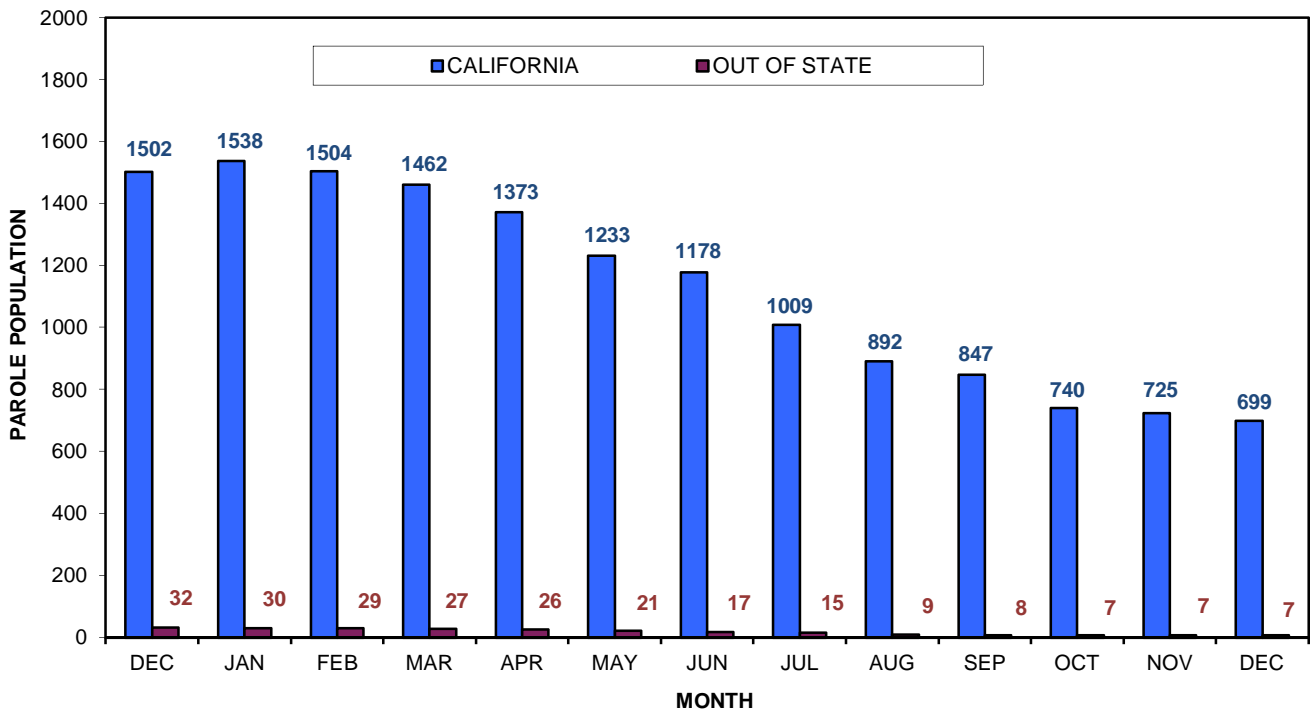


CHART 12
PAROLE ADP AND REVOCATIONS - DJJ CASES
By Month, December 2010 thru December 2011

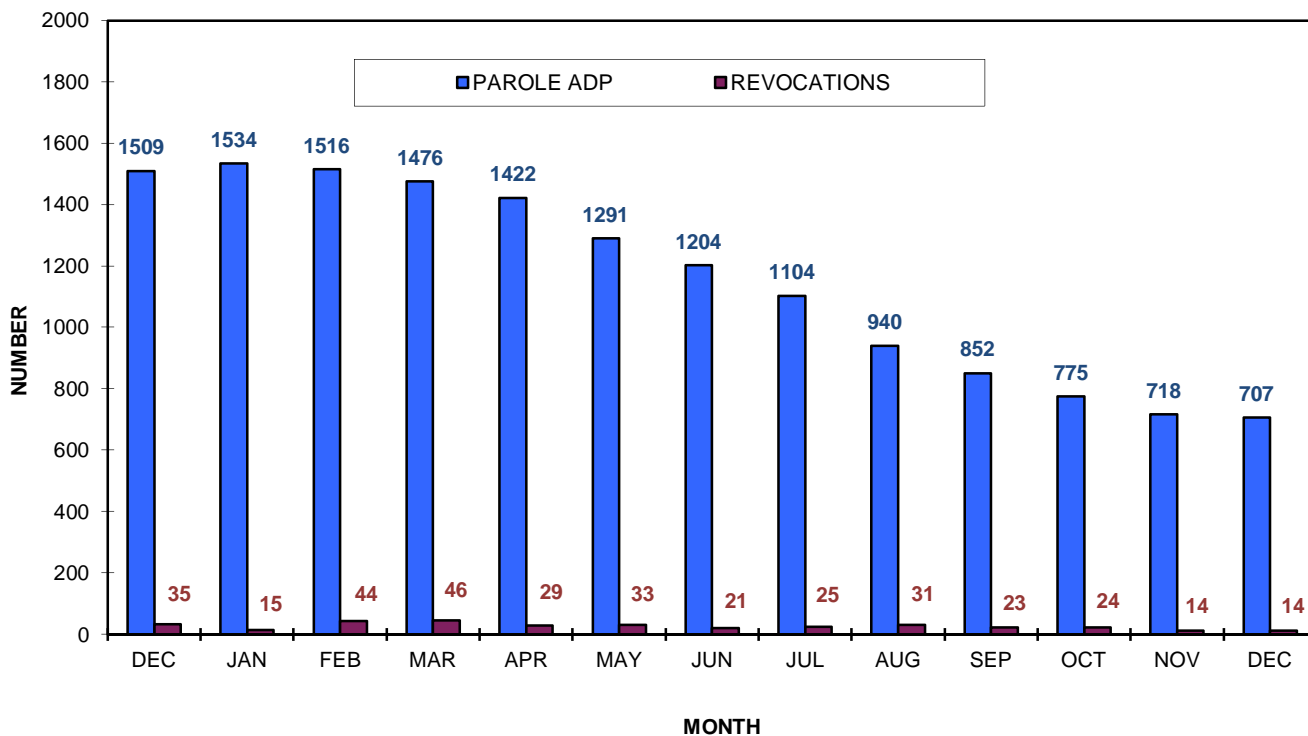
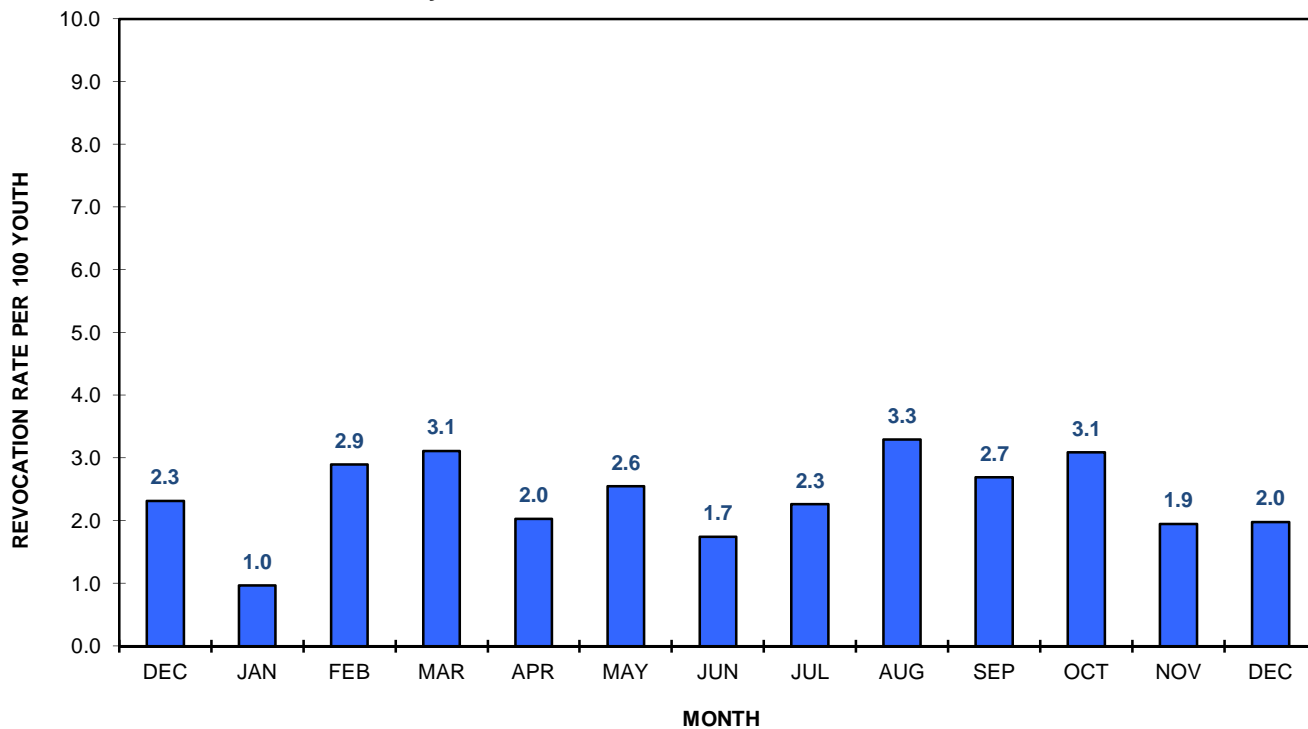


CHART 13
PAROLE REVOCATION RATE (per 100 Youth) - DJJ CASES
By Month, December 2010 thru December 2011



TIME ADD/CUT CHARTS

Chart 14 - DJJ FACILITIES ONLY
TOTAL DDMS/PBD EXTENSIONS-RESTORES/CREDITS AND NET
FIRST AND RE-COMMITMENTS (NO REVOCATION CASES)
By Month, December 2010 thru December 2011

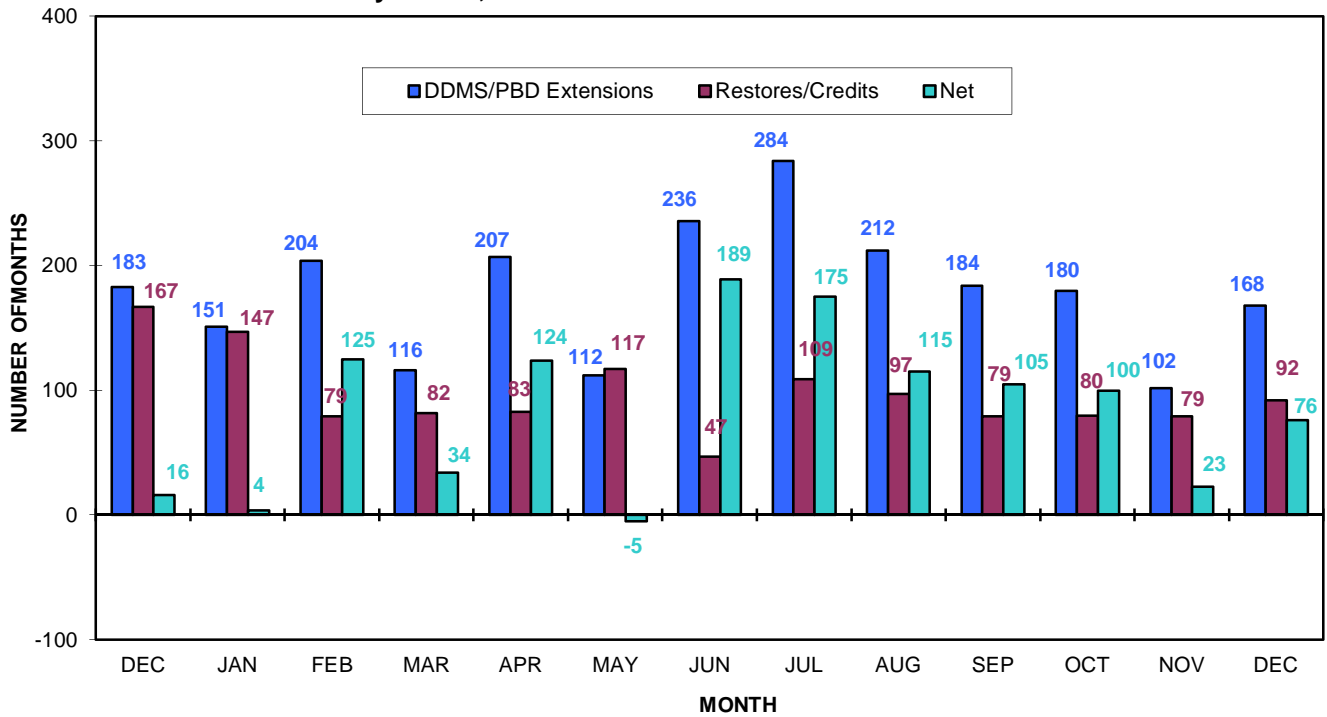


Chart 14(a) - DJJ FACILITIES ONLY
NET MONTHS FROM TOTAL DDMS/PBD EXTENSIONS-RESTORES/CREDITS
RATE (per 100 Youth) IN FACILITIES' ADP
FIRST AND RE-COMMITMENTS (NO REVOCATION CASES)
By Month, December 2010 thru December 2011

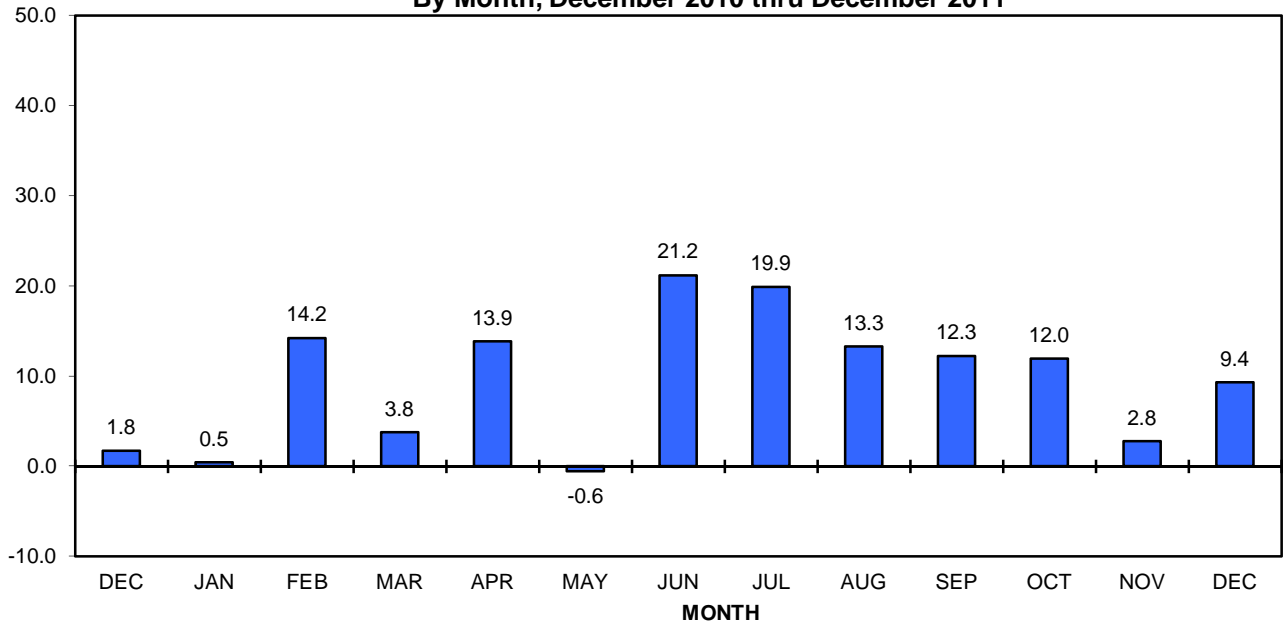


Chart 15 - DJJ FACILITIES ONLY
DDMS (Disciplinary) EXTENSIONS/RESTORES AND NET
FIRST AND RE-COMMITMENTS (NO REVOCATION CASES)
By Month, December 2010 thru December 2011

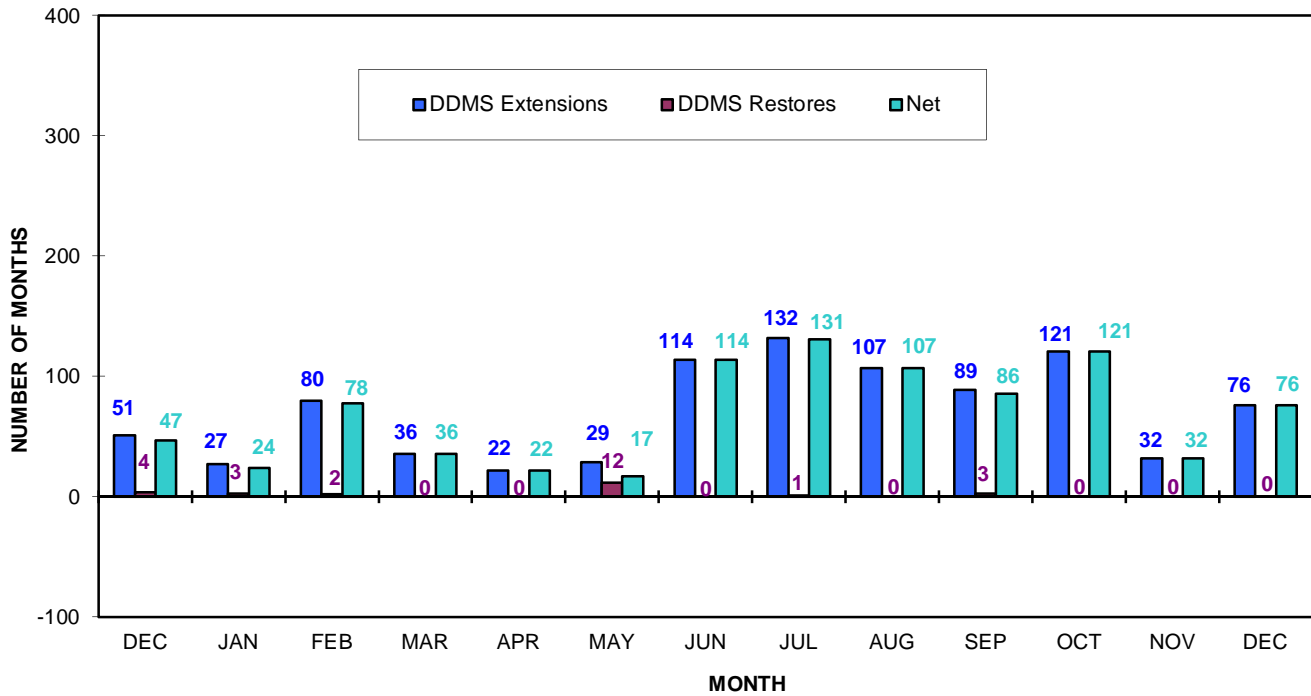


Chart 15(a) - DJJ FACILITIES ONLY
NET MONTHS RESULTING FROM DDMS (Disciplinary) EXTENSIONS/RESTORES
RATE (per 100 Youth) IN FACILITIES' ADP
FIRST AND RE-COMMITMENTS (NO REVOCATION CASES)
By Month, December 2010 thru December 2011

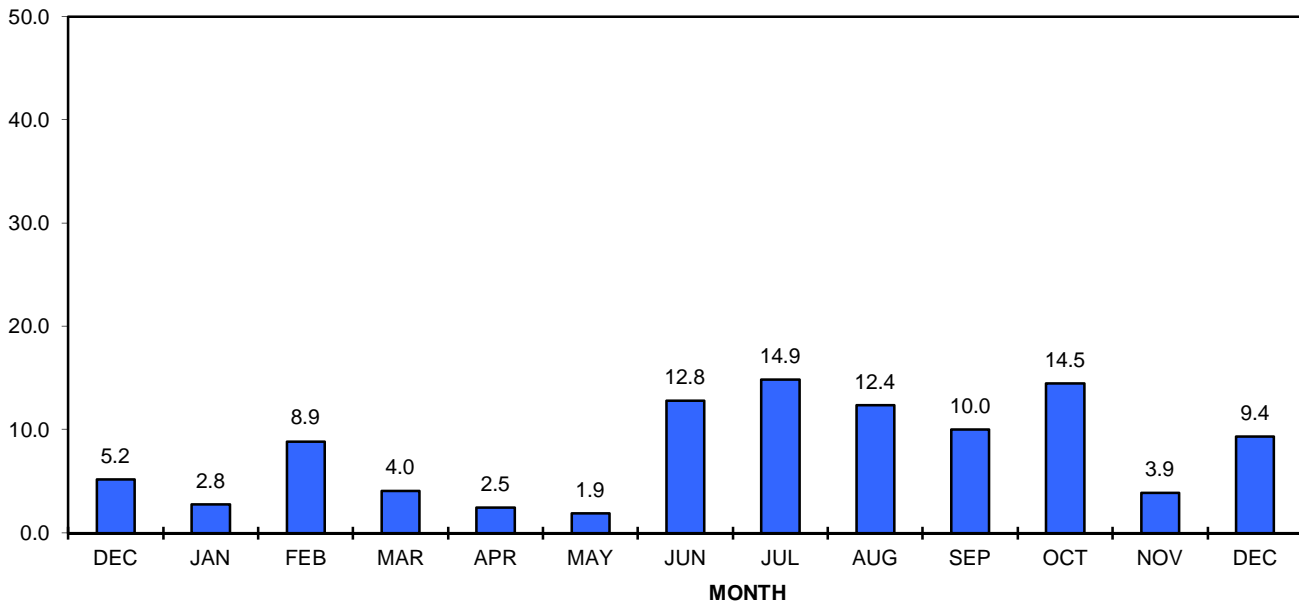


Chart 16 - DJJ FACILITIES ONLY
TREATMENT/TRAINING EXTENSIONS/CREDITS AND NET
FIRST AND RE-COMMITMENTS (NO REVOCATION CASES)
 By Month, December 2010 thru December 2011

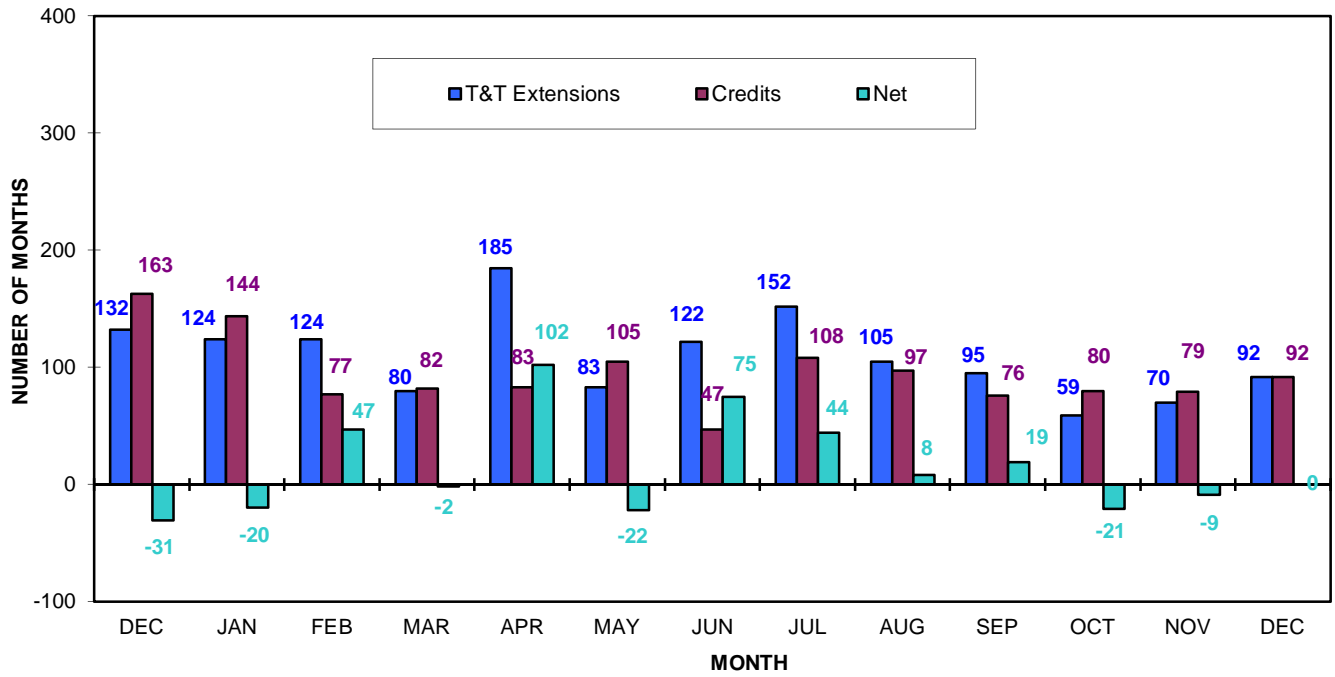


Chart 16(a) - DJJ FACILITIES ONLY
NET MONTHS RESULTING FROM TREATMENT/TRAINING EXTENSIONS/CREDITS
RATE (per 100 Youth) IN FACILITIES' ADP
FIRST AND RE-COMMITMENTS (NO REVOCATION CASES)
 By Month, December 2010 thru December 2011

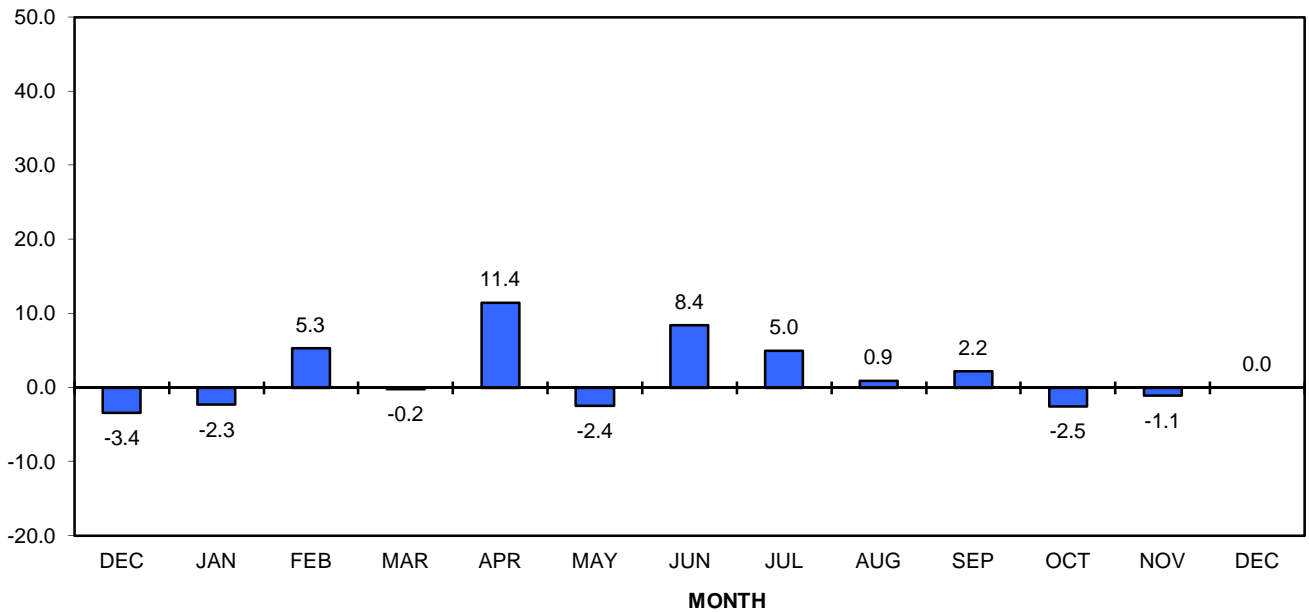
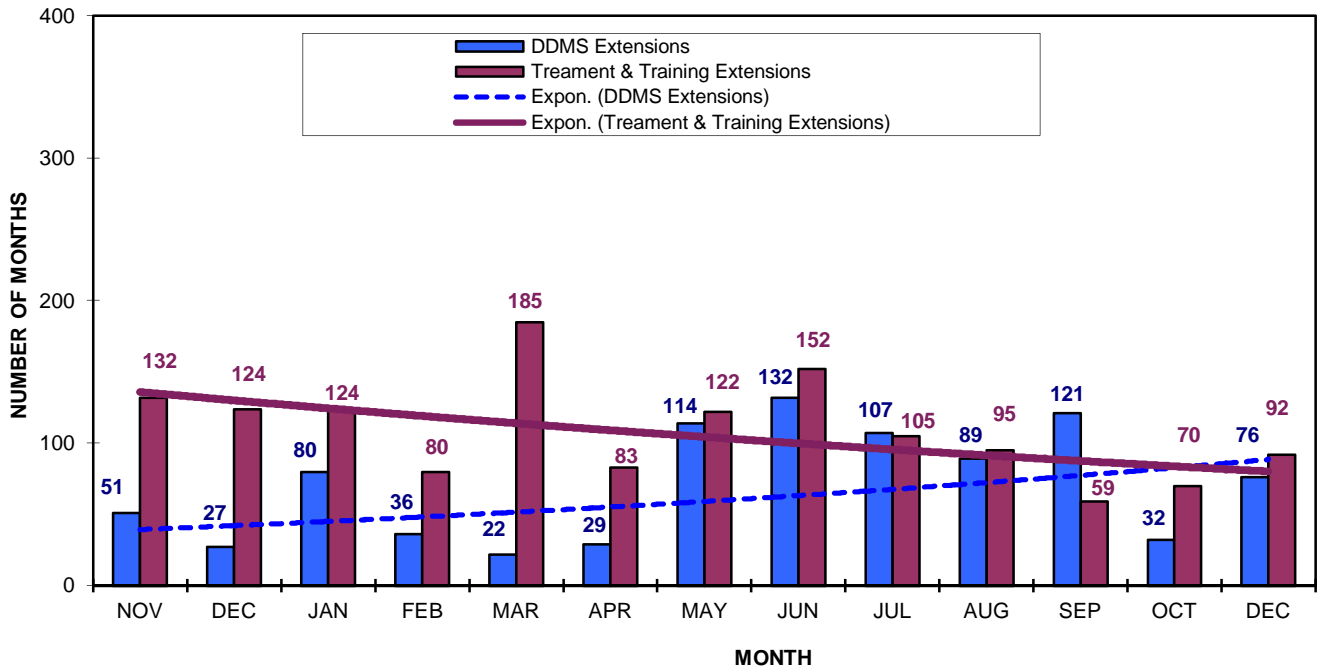
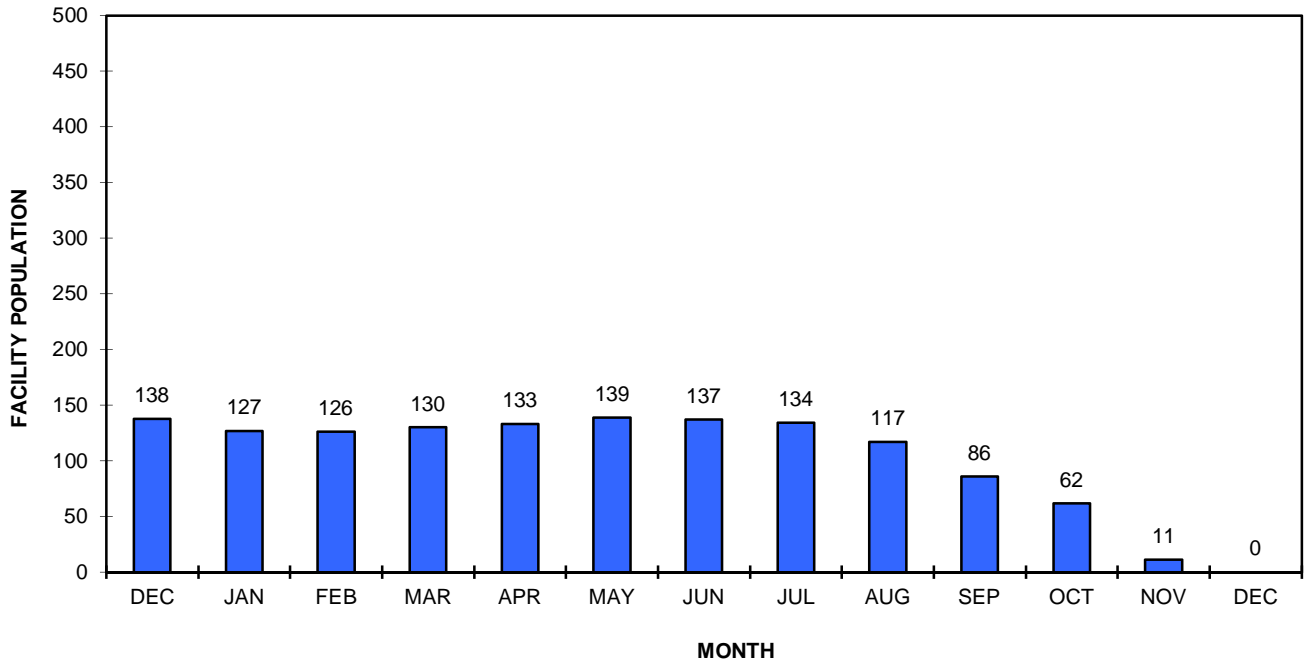


Chart 17 - DJJ FACILITIES ONLY
DDMS VS. TREATMENT/TRAINING EXTENSIONS
FIRST AND RE-COMMITMENTS (NO REVOCATION CASES)
By Month, December 2010 thru December 2011



BREAKDOWN BY FACILITY

**CHART 18 - SYCRCC'S AVERAGE DAILY POPULATION
FIRST AND RE-COMMITMENTS (NO REVOCATION CASES)
End of Month, December 2010 thru December 2011**



**Chart 18A - SYCRCC
TOTAL PBD EXTENSIONS/CREDITS AND NET (DDMS and Treatment/Training)
FIRST AND RE-COMMITMENTS (NO REVOCATION CASES)
By Month, December 2010 thru December 2011**

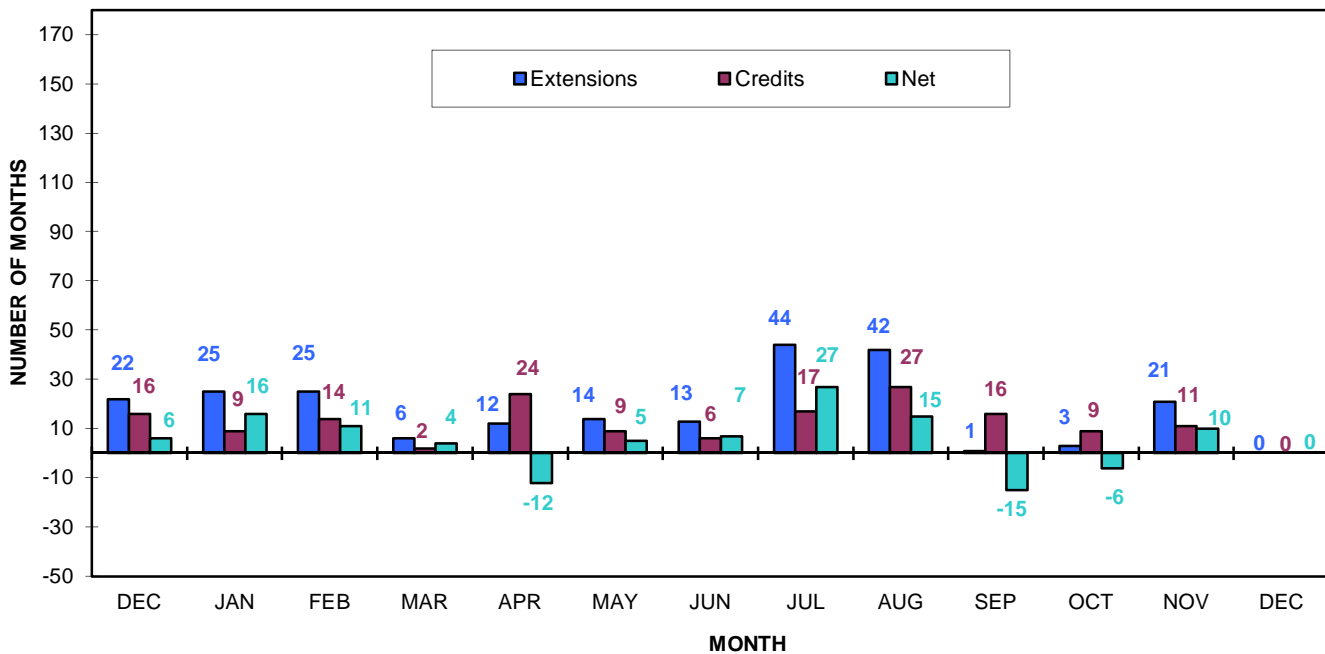


Chart 18B - SYCRCC
DDMS (Disciplinary) EXTENSIONS/RESTORES AND NET
FIRST AND RE-COMMITMENTS (NO REVOCATION CASES)
By Month, December 2010 thru December 2011

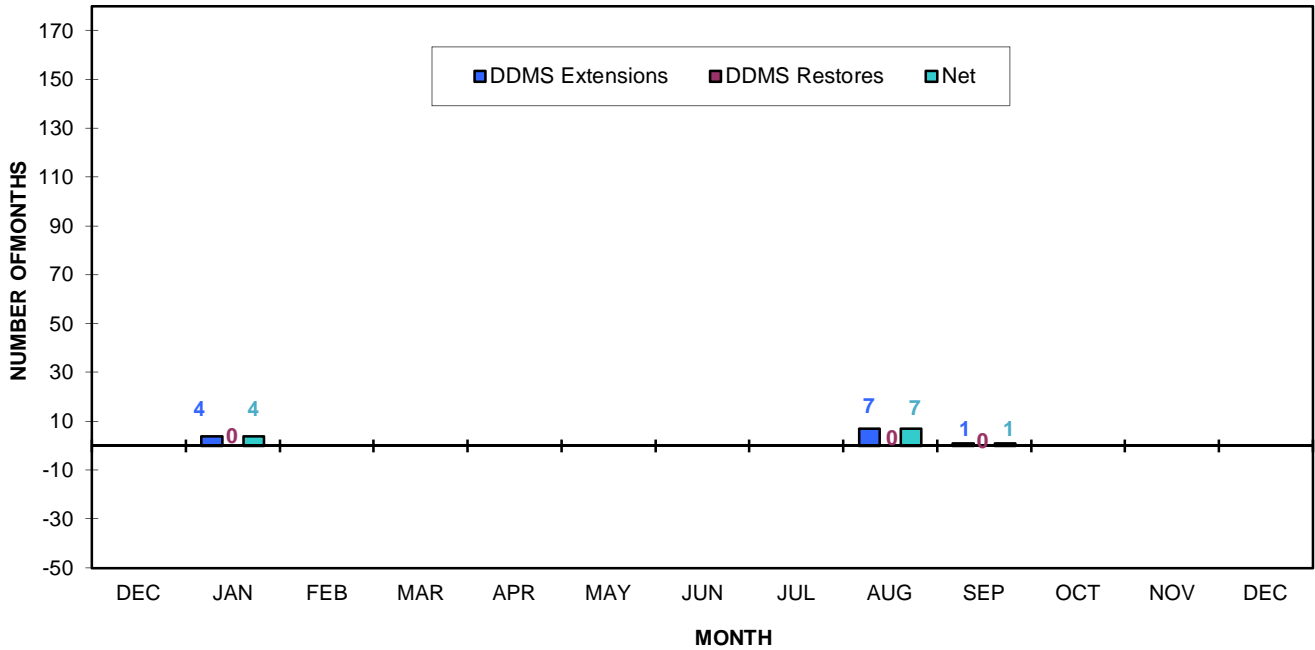
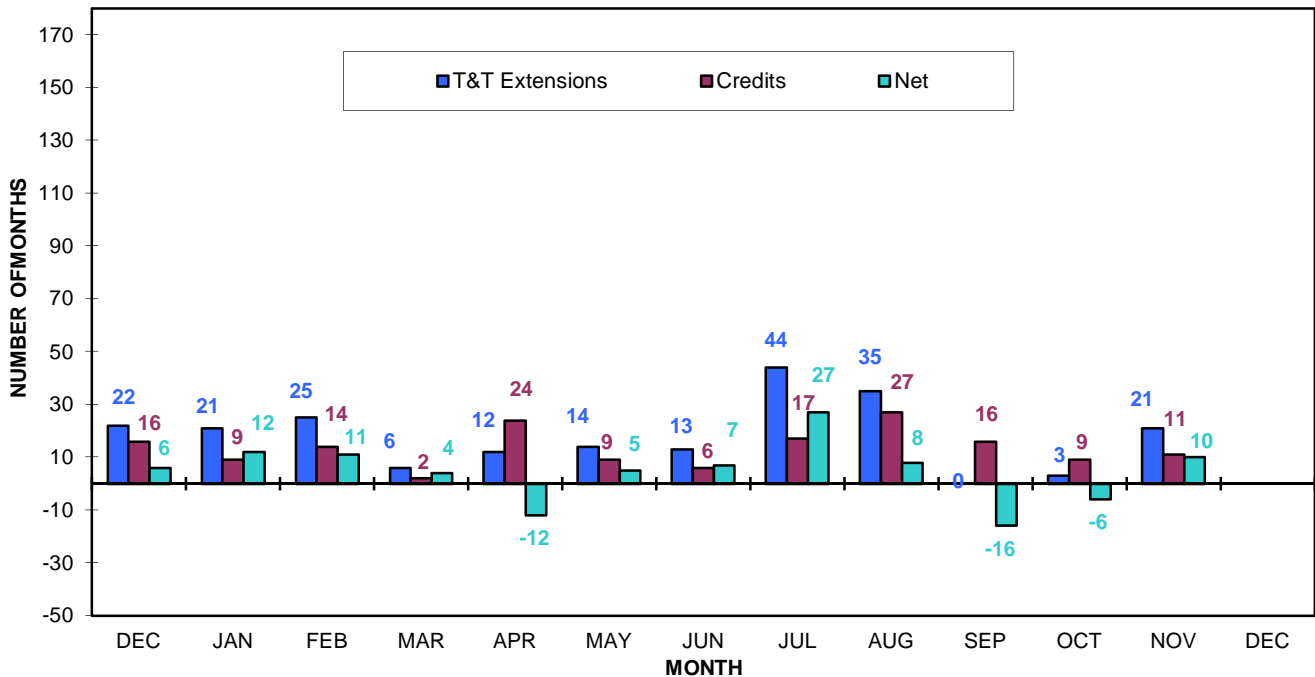
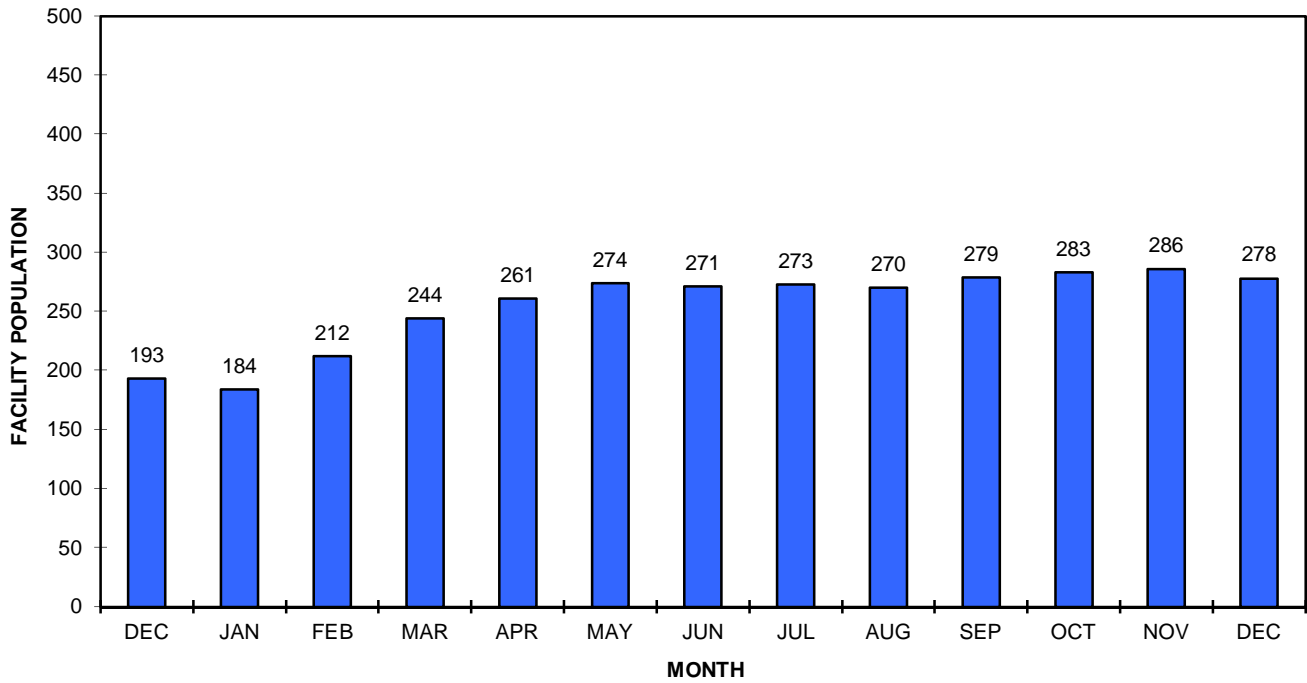


Chart 18C - SYCRCC
TREATMENT/TRAINING EXTENSIONS/CREDITS AND NET
FIRST AND RE-COMMITMENTS (NO REVOCATION CASES)
By Month, December 2010 thru December 2011



**CHART 19 - N.A. CHADERJIAN'S AVERAGE DAILY POPULATION
FIRST AND RE-COMMITMENTS (NO REVOCATION CASES)
End of Month, December 2010 thru December 2011**



**Chart 19A - N.A. CHADERJIAN
TOTAL PBD EXTENSIONS/CREDITS AND NET (DDMS and Treatment/Training)
FIRST AND RE-COMMITMENTS (NO REVOCATION CASES)
By Month, December 2010 thru December 2011**

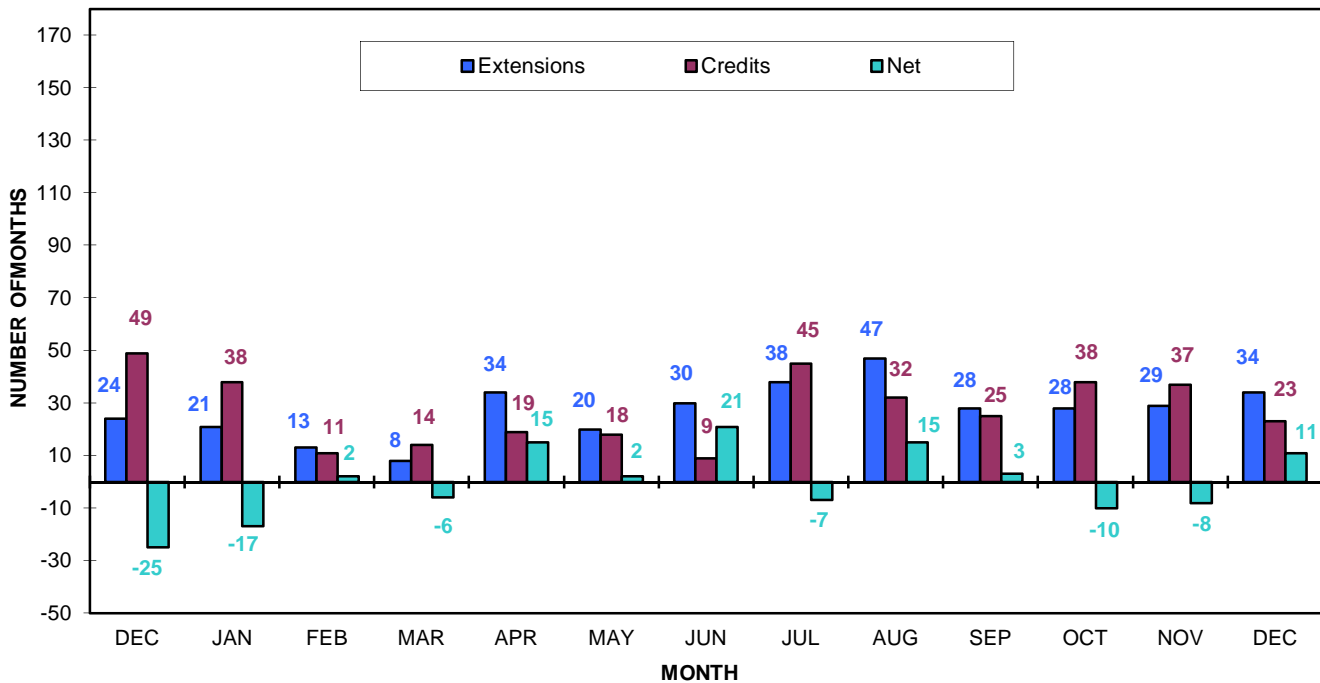


Chart 19B - N.A. CHADERJIAN
DDMS (Disciplinary) EXTENSIONS/RESTORES AND NET
FIRST AND RE-COMMITMENTS (NO REVOCATION CASES)
By Month, December 2010 thru December 2011

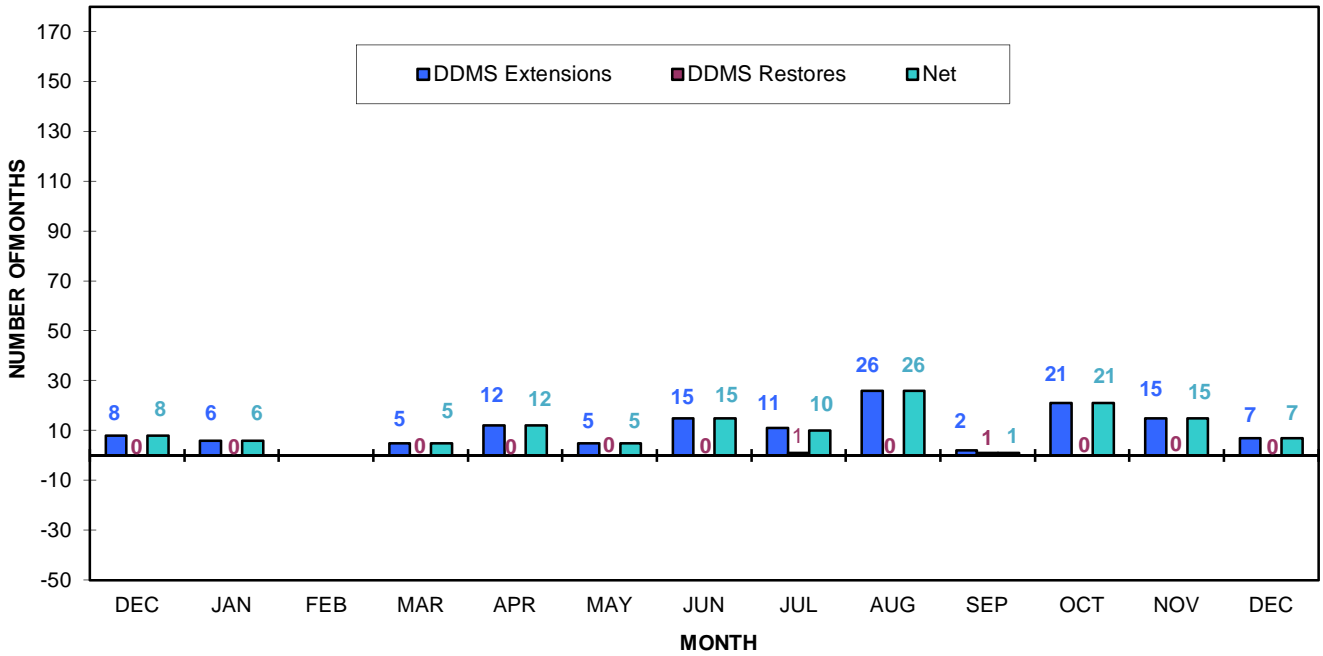
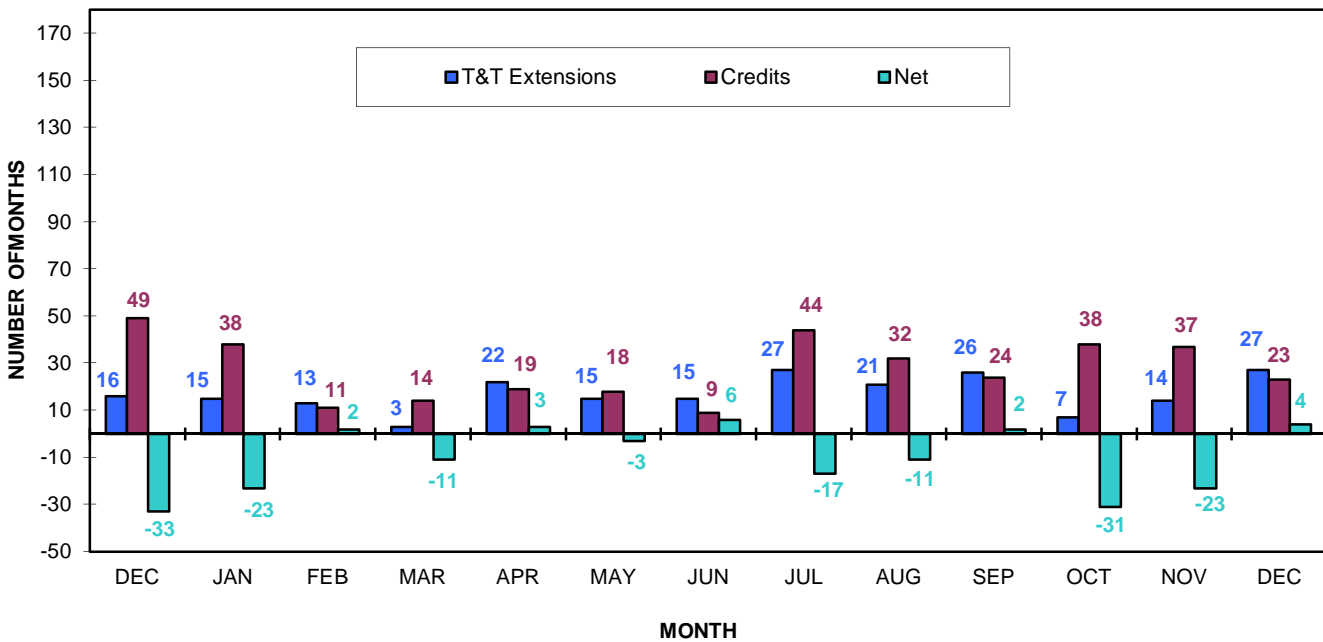
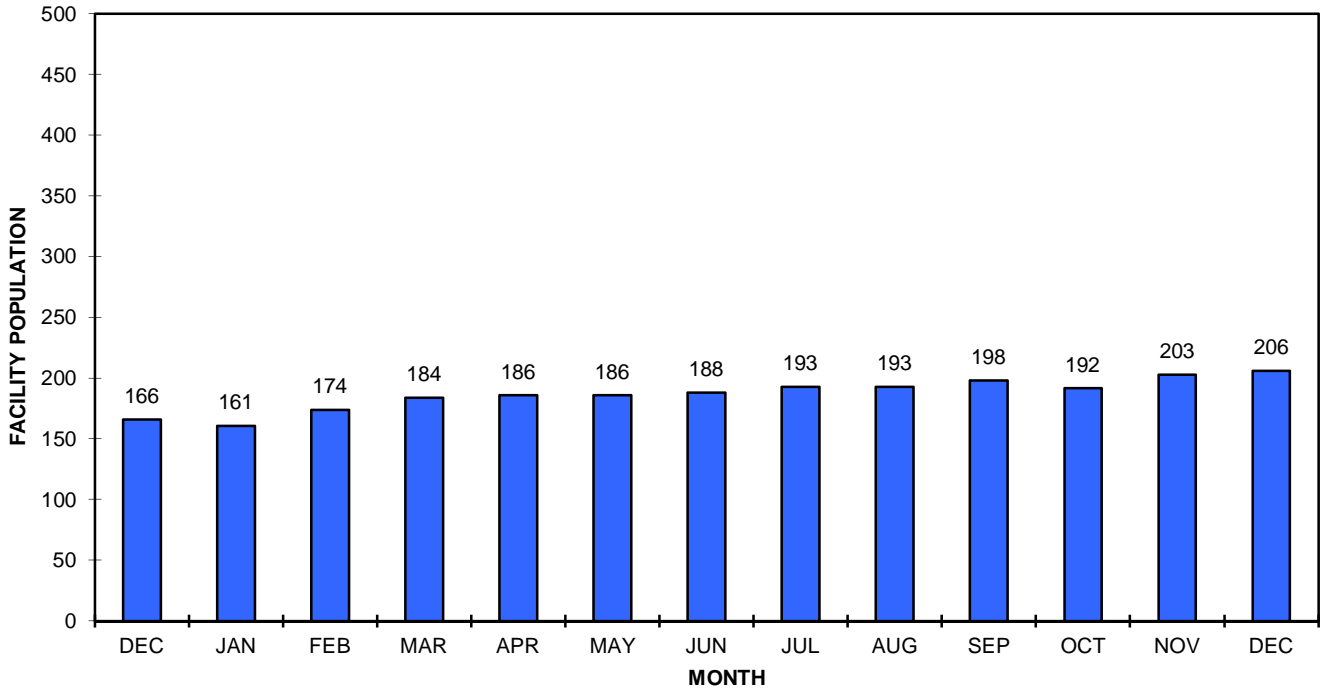


Chart 19C - N.A. CHADERJIAN
TREATMENT/TRAINING EXTENSIONS/CREDITS AND NET
FIRST AND RE-COMMITMENTS (NO REVOCATION CASES)
By Month, December 2010 thru December 2011



**CHART 20 - O.H. CLOSE'S AVERAGE DAILY POPULATION
FIRST AND RE-COMMITMENTS (NO REVOCATION CASES)
End of Month, December 2010 thru December 2011**



**Chart 20A - O.H. CLOSE
TOTAL PBD EXTENSIONS/CREDITS AND NET (DDMS and Treatment/Training)
FIRST AND RE-COMMITMENTS (NO REVOCATION CASES)
By Month, December 2010 thru December 2011**

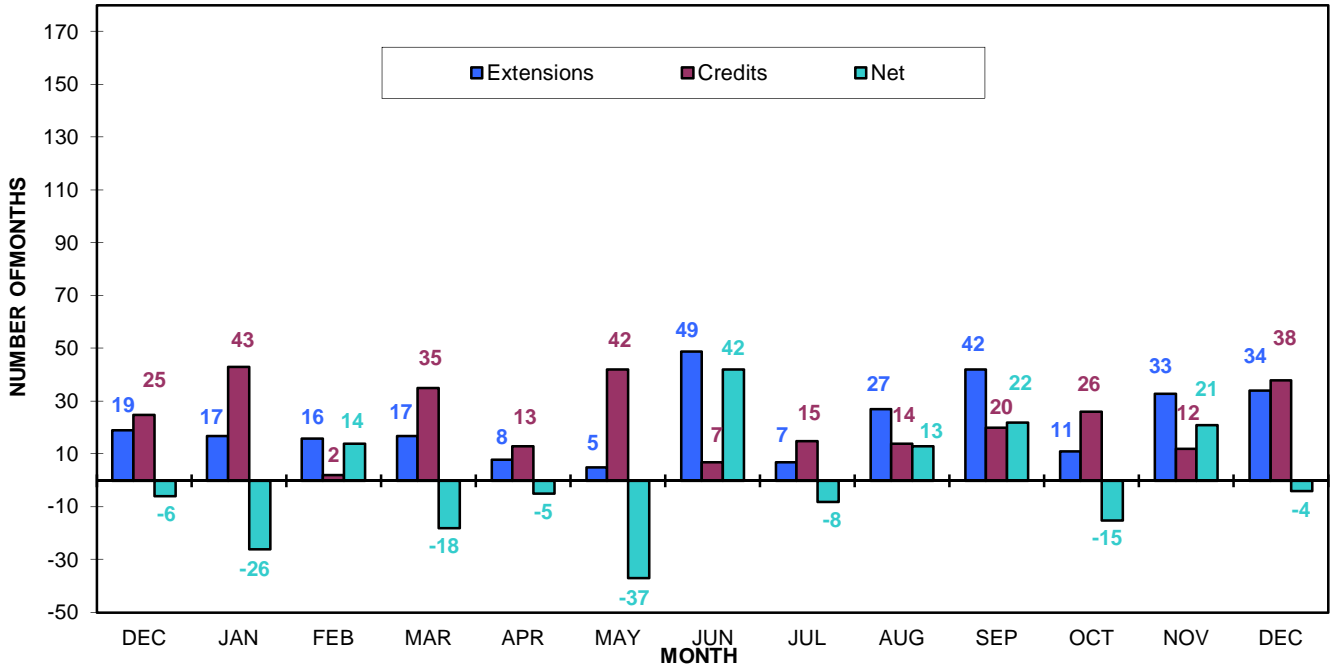


Chart 20B - O.H. CLOSE
DDMS (Disciplinary) EXTENSIONS/RESTORES AND NET
FIRST AND RE-COMMITMENTS (NO REVOCATION CASES)
By Month, December 2010 thru December 2011

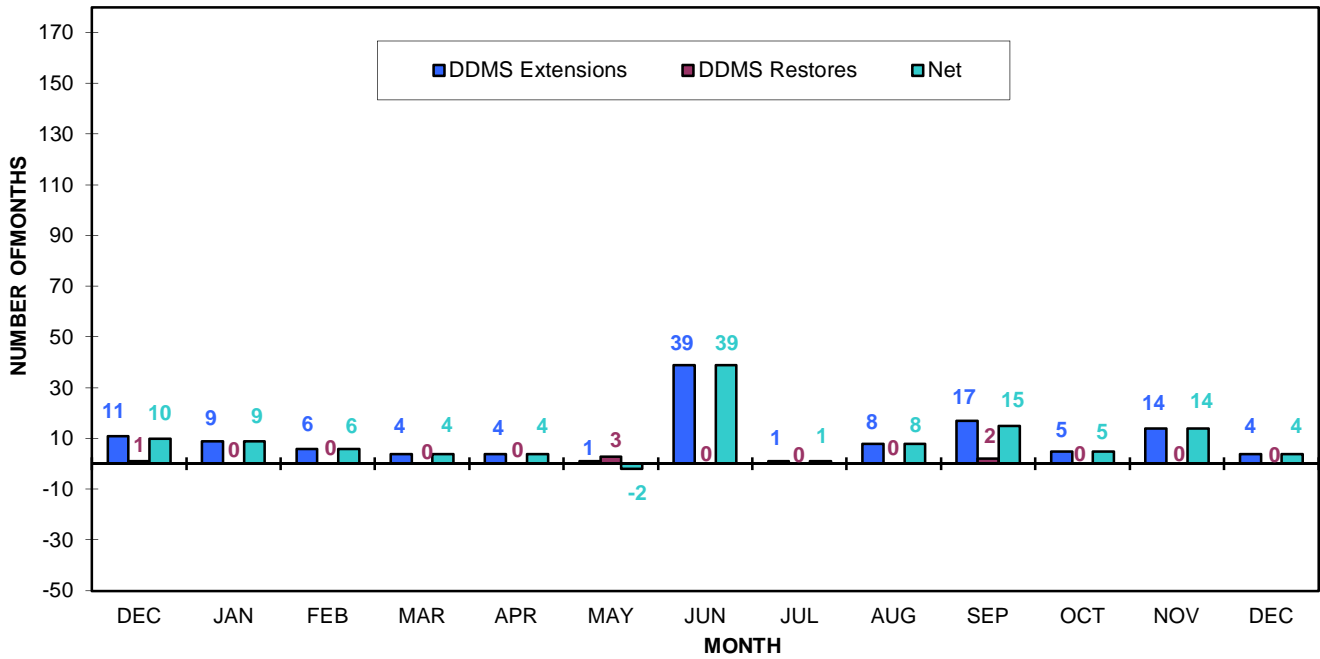
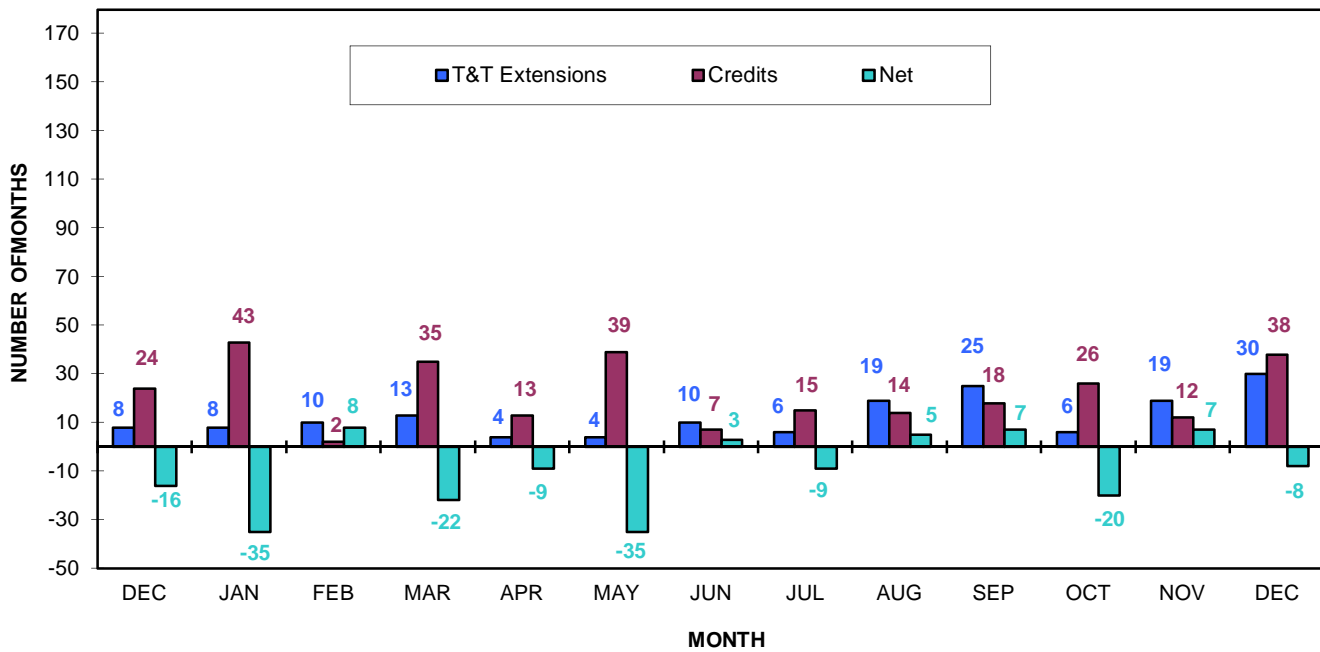
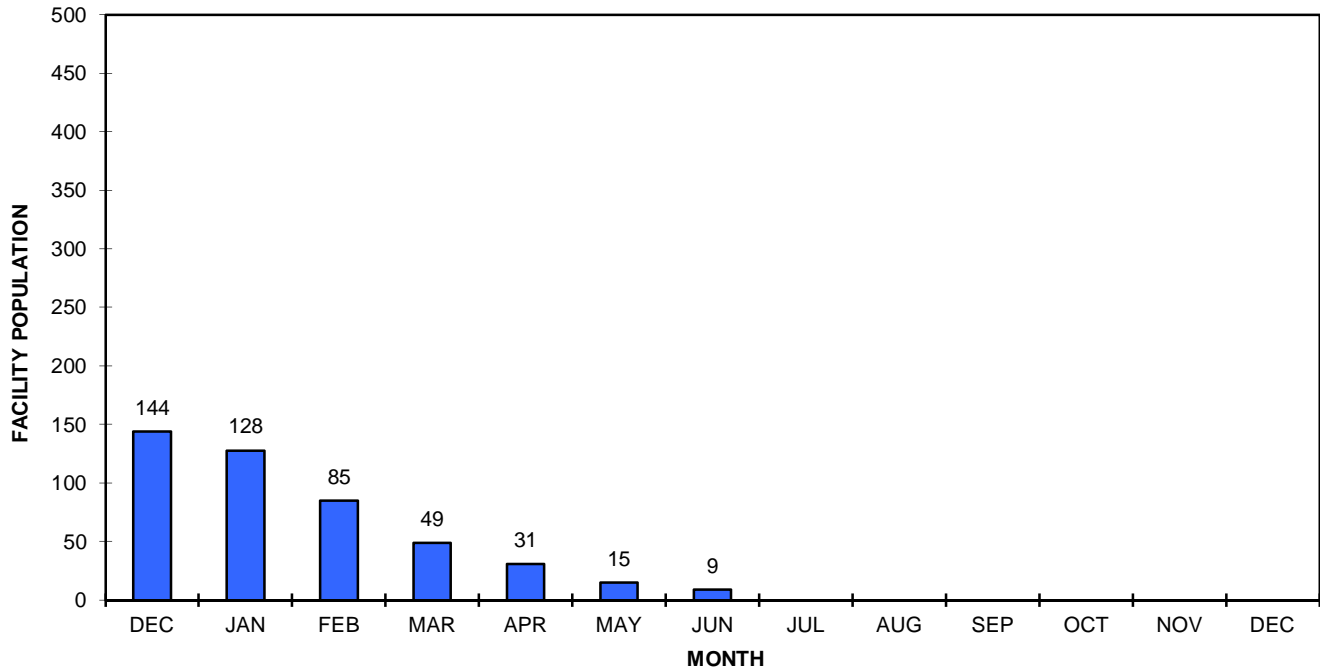


Chart 20C - O.H. CLOSE
TREATMENT/TRAINING EXTENSIONS/CREDITS AND NET
FIRST AND RE-COMMITMENTS (NO REVOCATION CASES)
By Month, December 2010 thru December 2011



**CHART 21 - PRESTON'S AVERAGE DAILY POPULATION
FIRST AND RE-COMMITMENTS (NO REVOCATION CASES)
End of Month, December 2010 thru December 2011**



**Chart 21A - PRESTON
TOTAL PBD EXTENSIONS/CREDITS AND NET (DDMS and Treatment/Training)
FIRST AND RE-COMMITMENTS (NO REVOCATION CASES)
By Month, December 2010 thru December 2011**

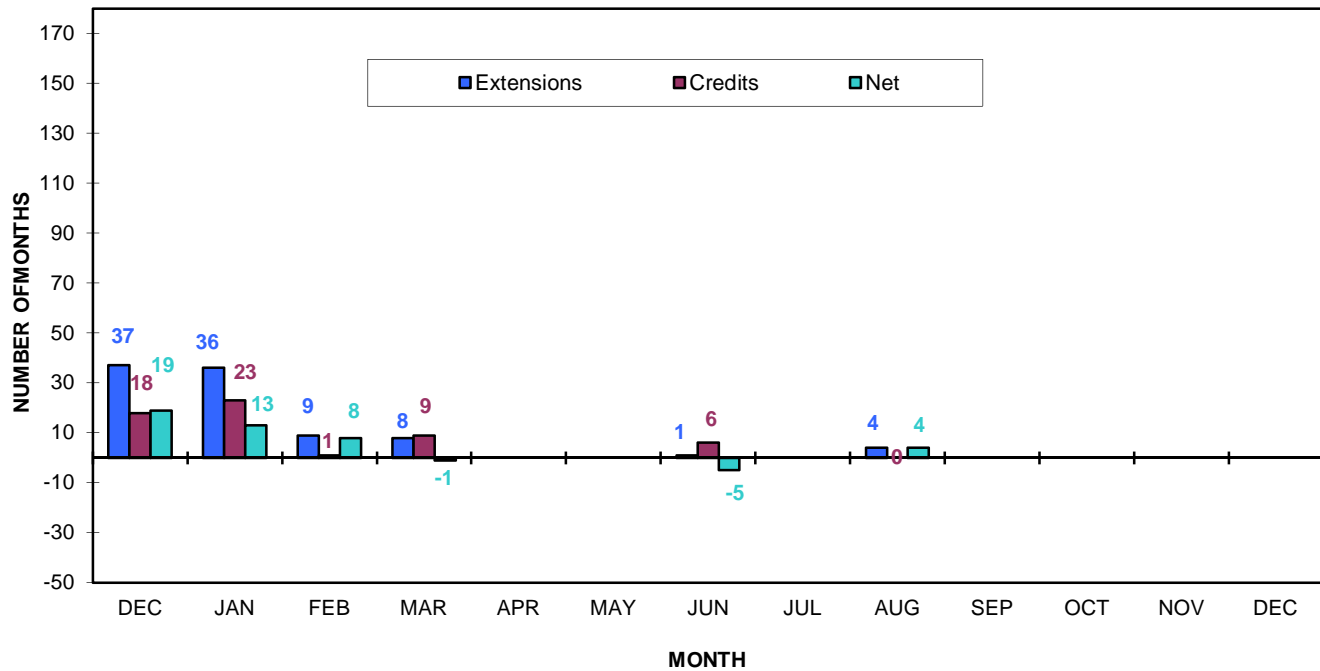


Chart 21B - PRESTON
DDMS (Disciplinary) EXTENSIONS/RESTORES AND NET
FIRST AND RE-COMMITMENTS (NO REVOCATION CASES)
By Month, December 2010 thru December 2011

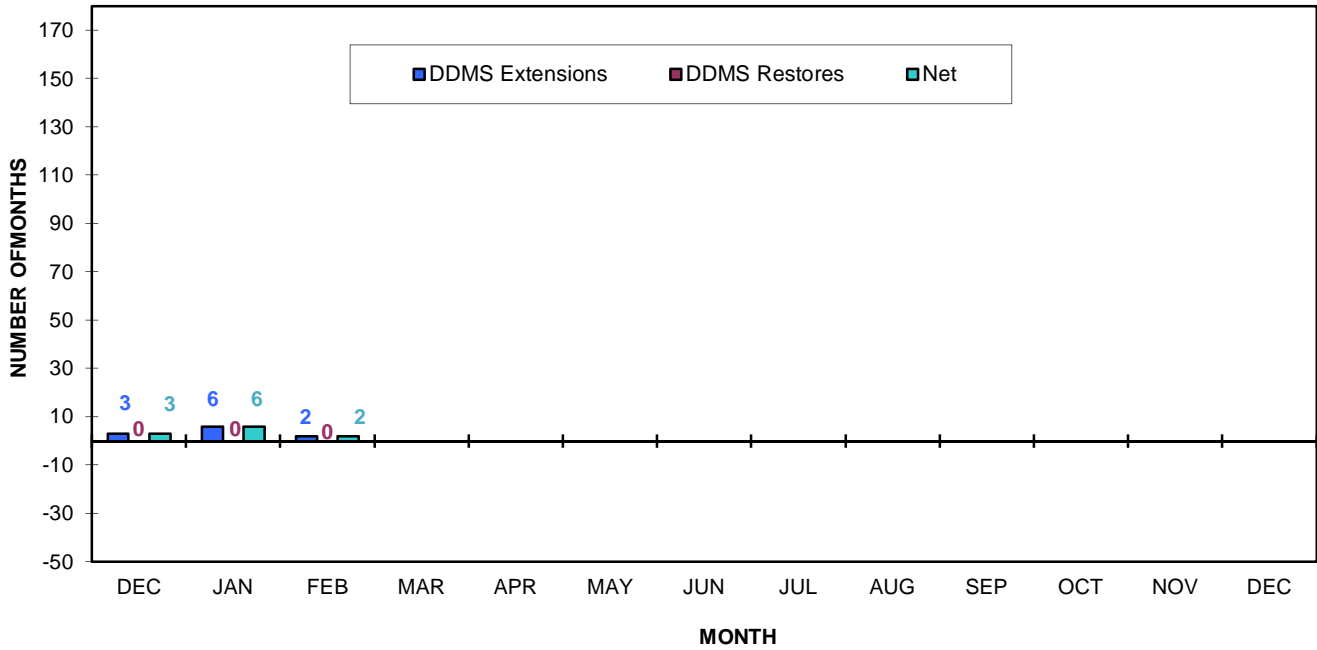
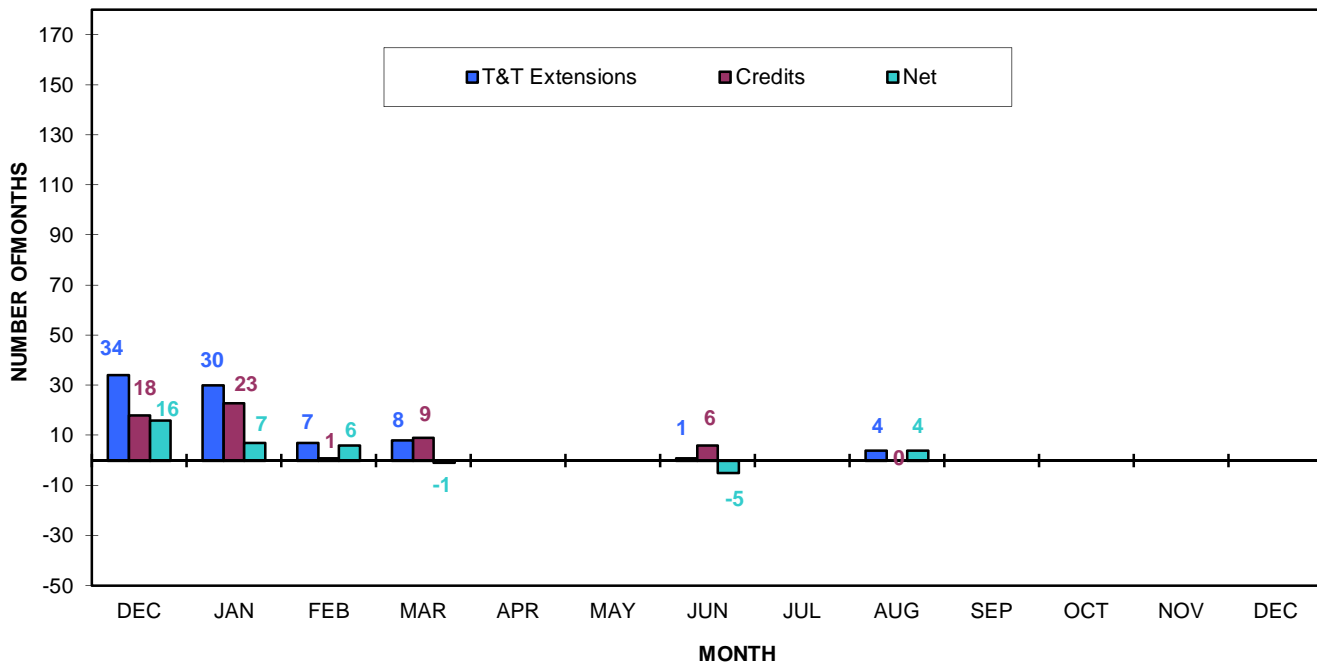
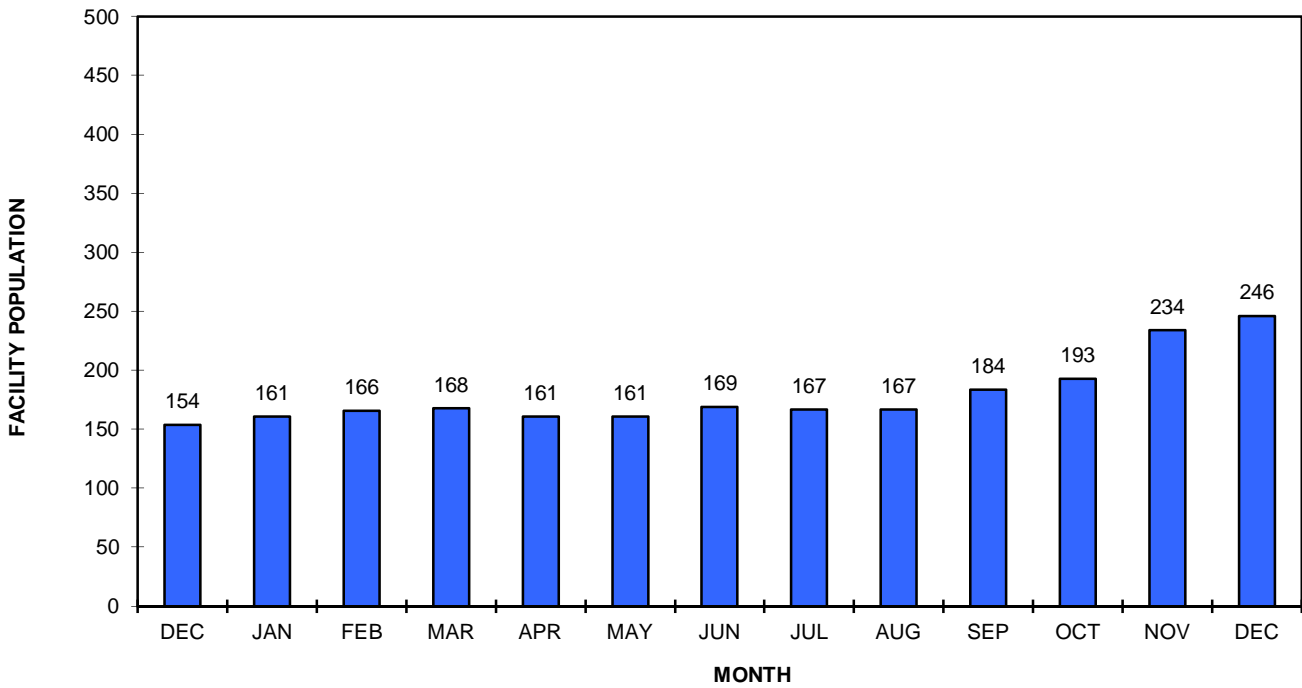


Chart 21C - PRESTON
TREATMENT/TRAINING EXTENSIONS/CREDITS AND NET
FIRST AND RE-COMMITMENTS (NO REVOCATION CASES)
By Month, December 2010 thru December 2011



**CHART 22 - VENTURA'S (MALE) AVERAGE DAILY POPULATION
FIRST AND RE-COMMITMENTS (NO REVOCATION CASES)
End of Month, December 2010 thru December 2011**



**Chart 22A - VENTURA (MALES)
TOTAL PBD EXTENSIONS/CREDITS AND NET (DDMS and Treatment/Training)
FIRST AND RE-COMMITMENTS (NO REVOCATION CASES)
By Month, December 2010 thru December 2011**

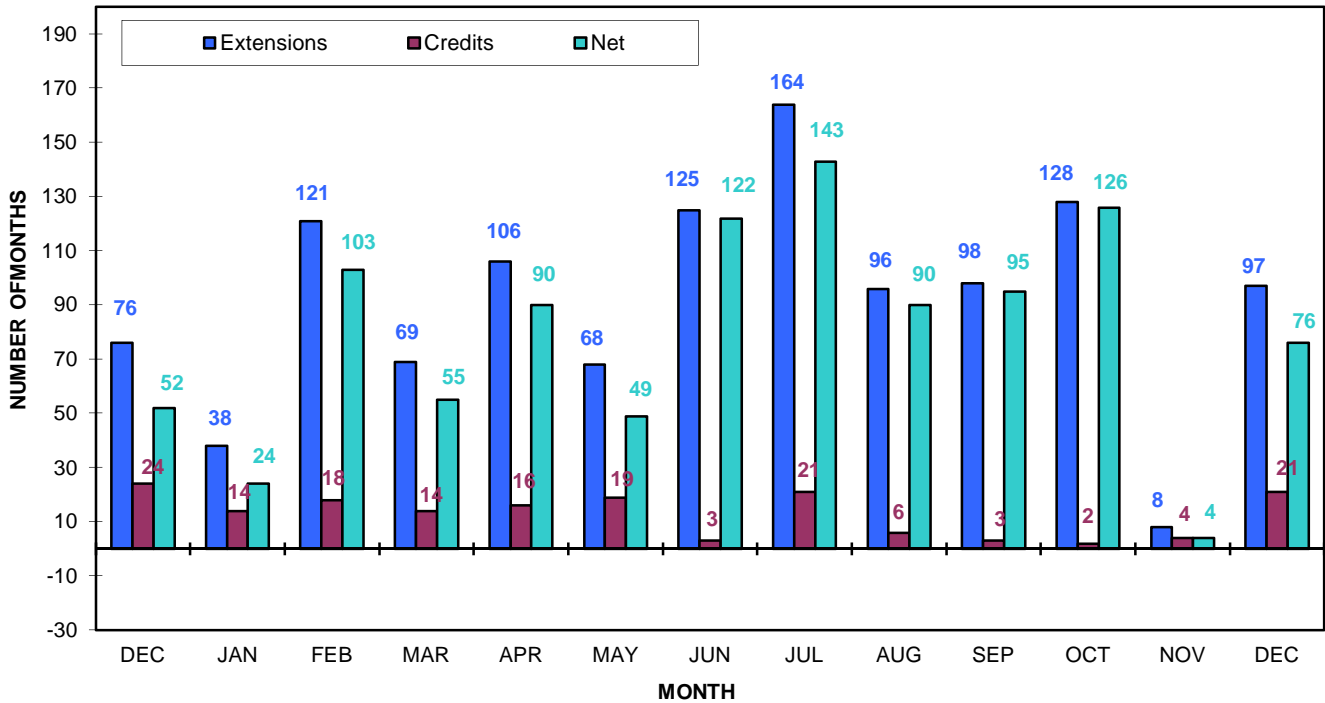


Chart 22B - VENTURA (MALES)
DDMS (Disciplinary) EXTENSIONS/RESTORES AND NET
FIRST AND RE-COMMITMENTS (NO REVOCATION CASES)
By Month, December 2010 thru December 2011

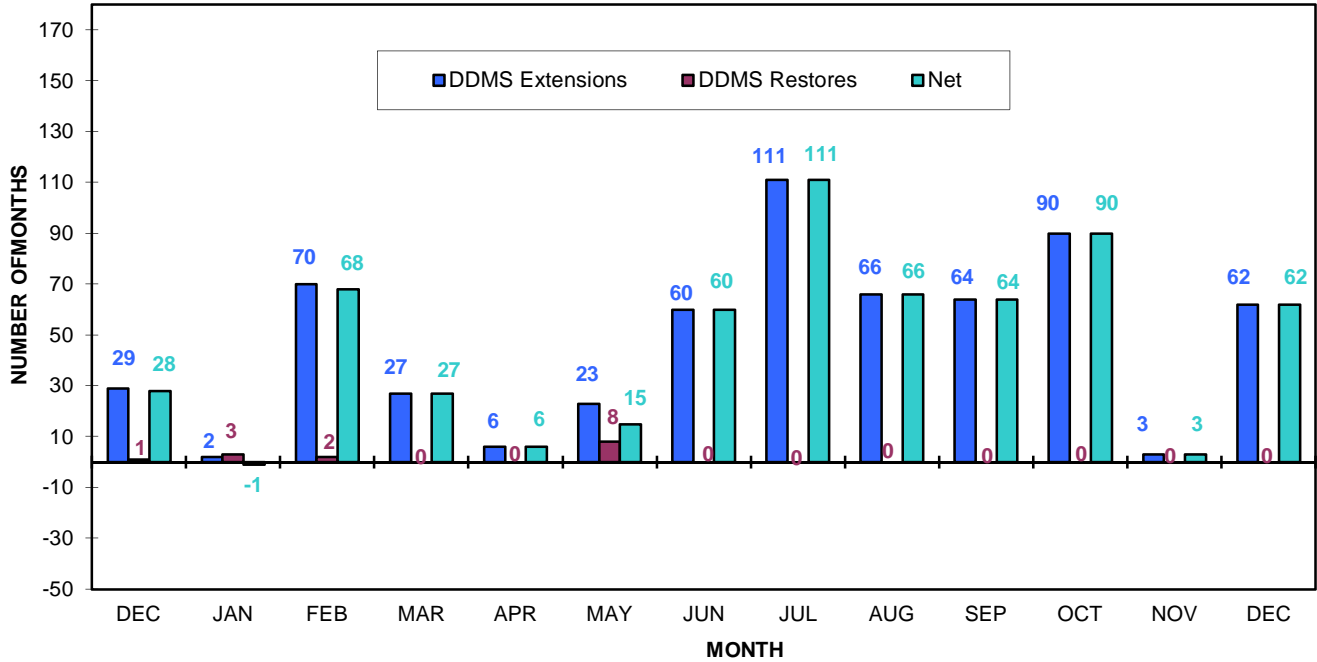
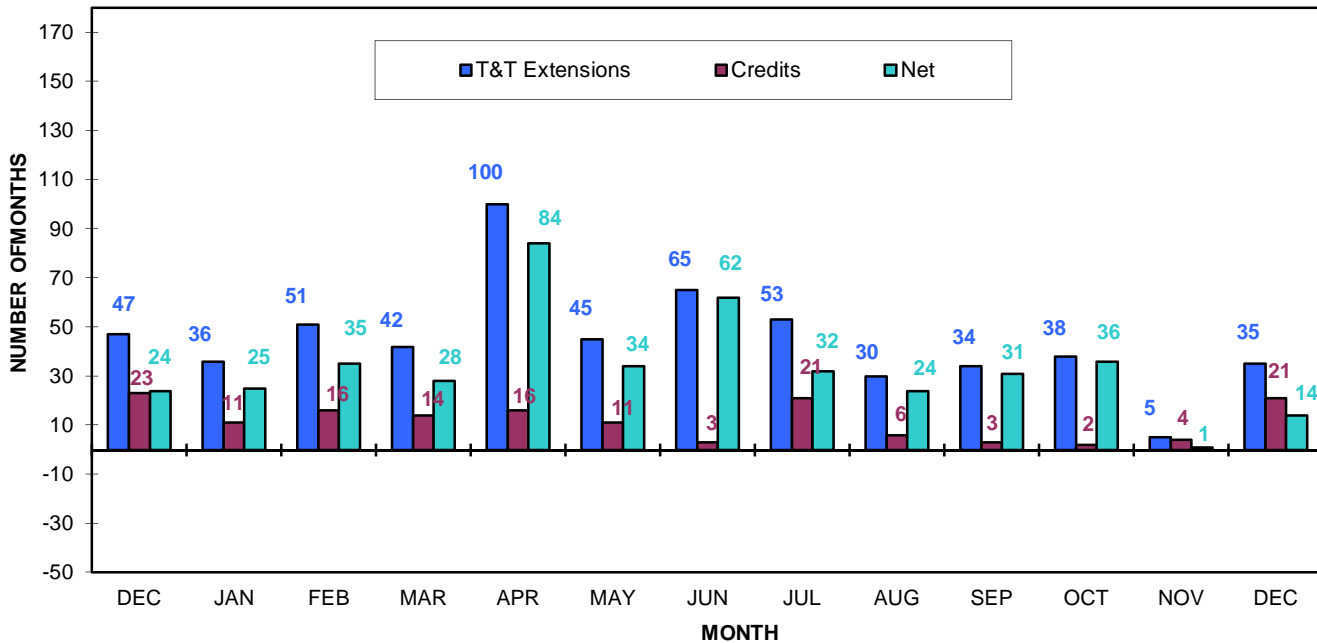
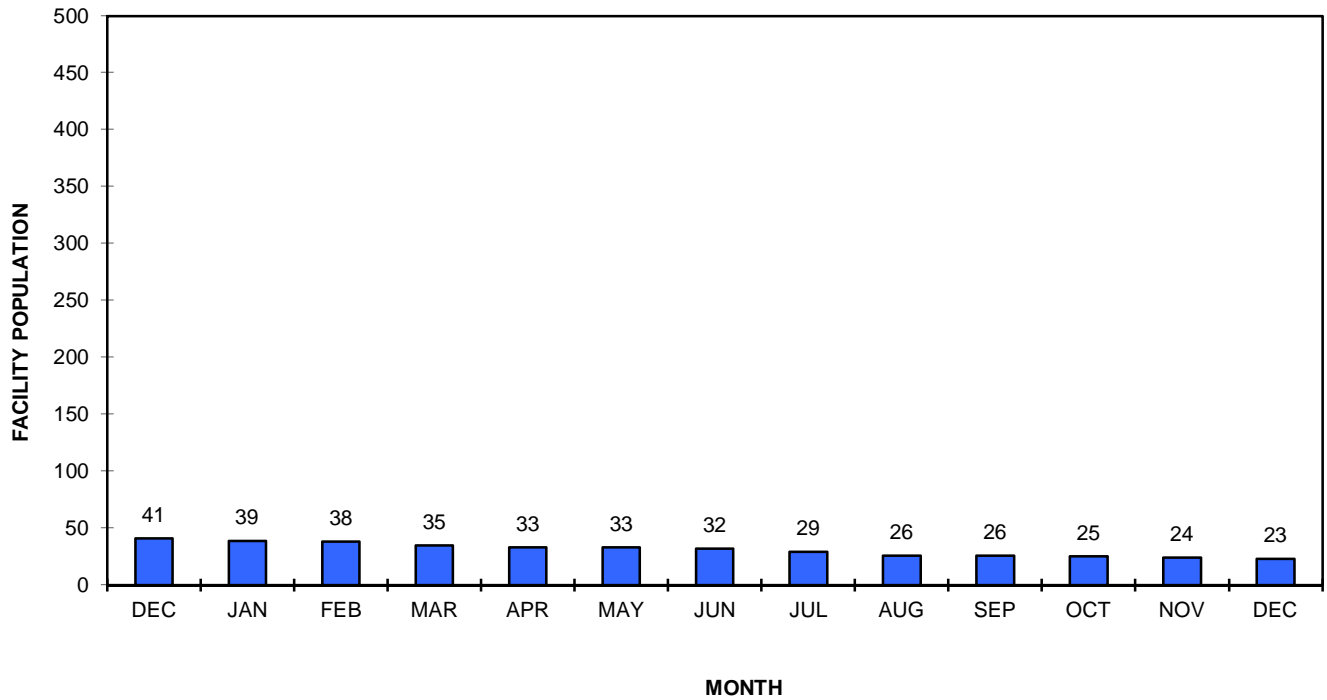


Chart 22C - VENTURA (MALES)
TREATMENT/TRAINING EXTENSIONS/CREDITS AND NET
FIRST AND RE-COMMITMENTS (NO REVOCATION CASES)
By Month, December 2010 thru December 2011



**CHART 23 - VENTURA'S (FEMALE) AVERAGE DAILY POPULATION
FIRST AND RE-COMMITMENTS (NO REVOCATION CASES)
End of Month, December 2010 thru December 2011**



**Chart 23A - VENTURA (FEMALES)
TOTAL PBD EXTENSIONS/CREDITS AND NET (DDMS and Treatment/Training)
FIRST AND RE-COMMITMENTS (NO REVOCATION CASES)
By Month, December 2010 thru December 2011**

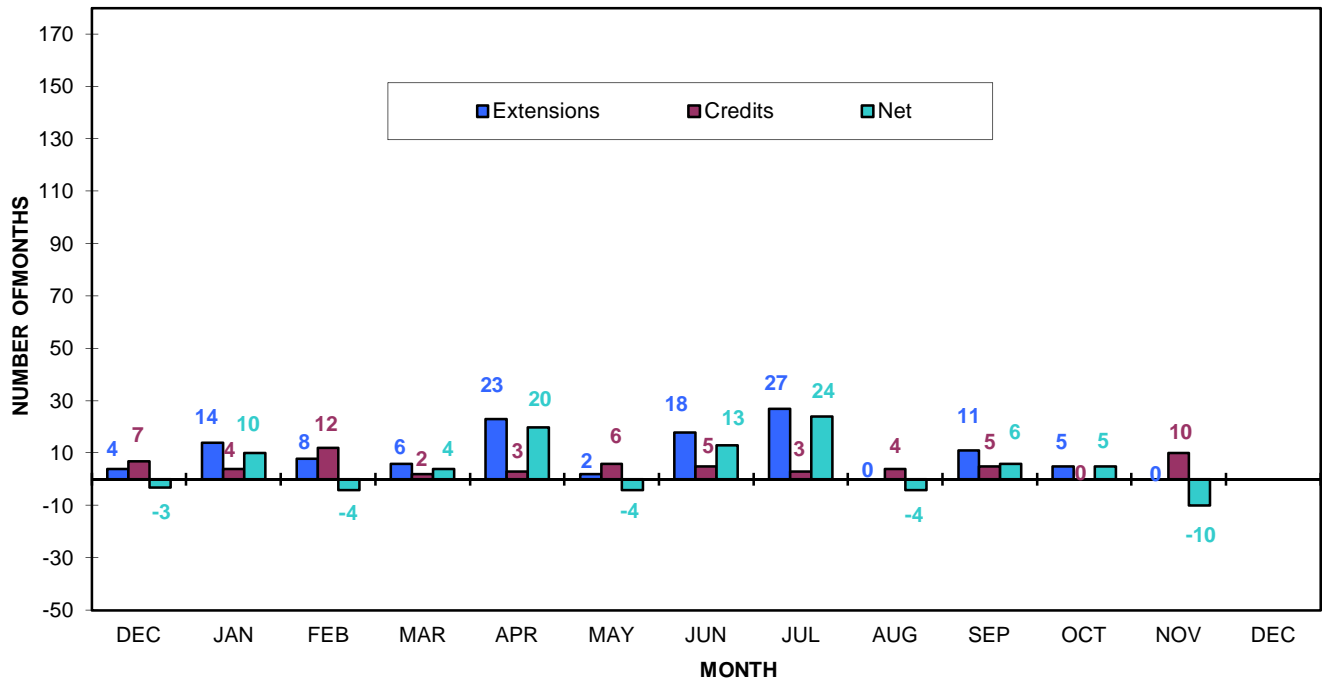


Chart 23B - VENTURA - FEMALES
DDMS (Disciplinary) EXTENSIONS/RESTORES AND NET
FIRST AND RE-COMMITMENTS (NO REVOCATION CASES)
By Month, December 2010 thru December 2011

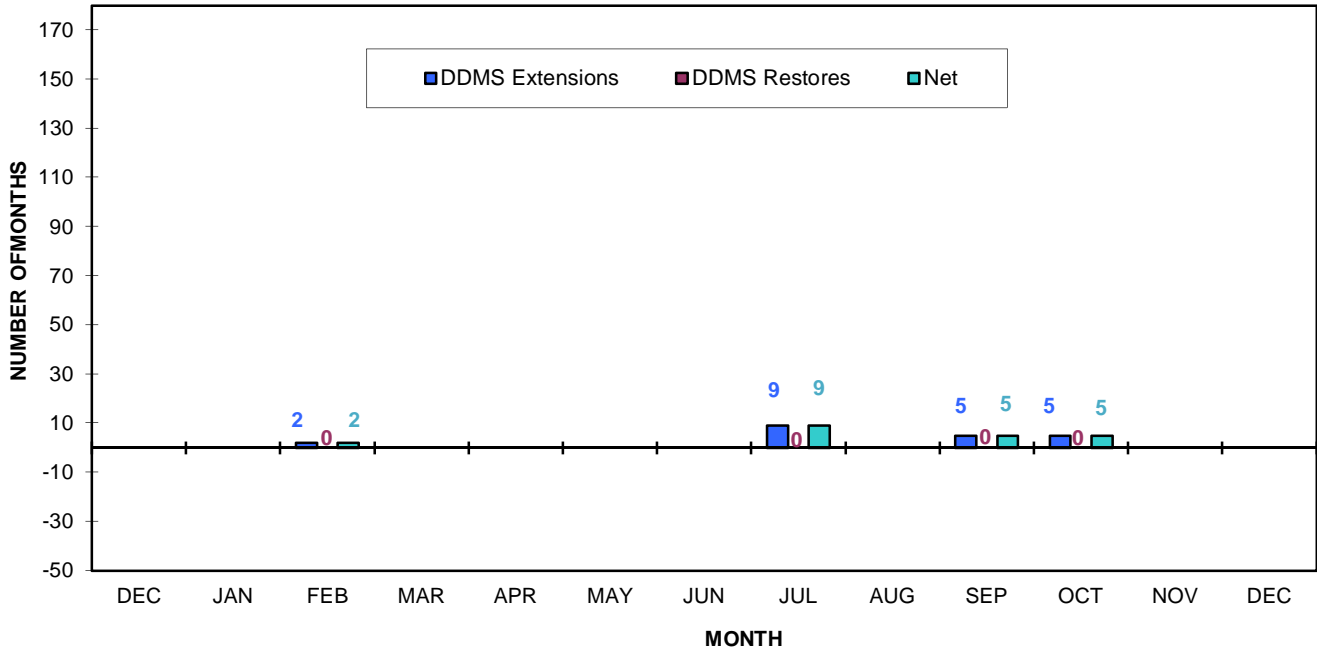
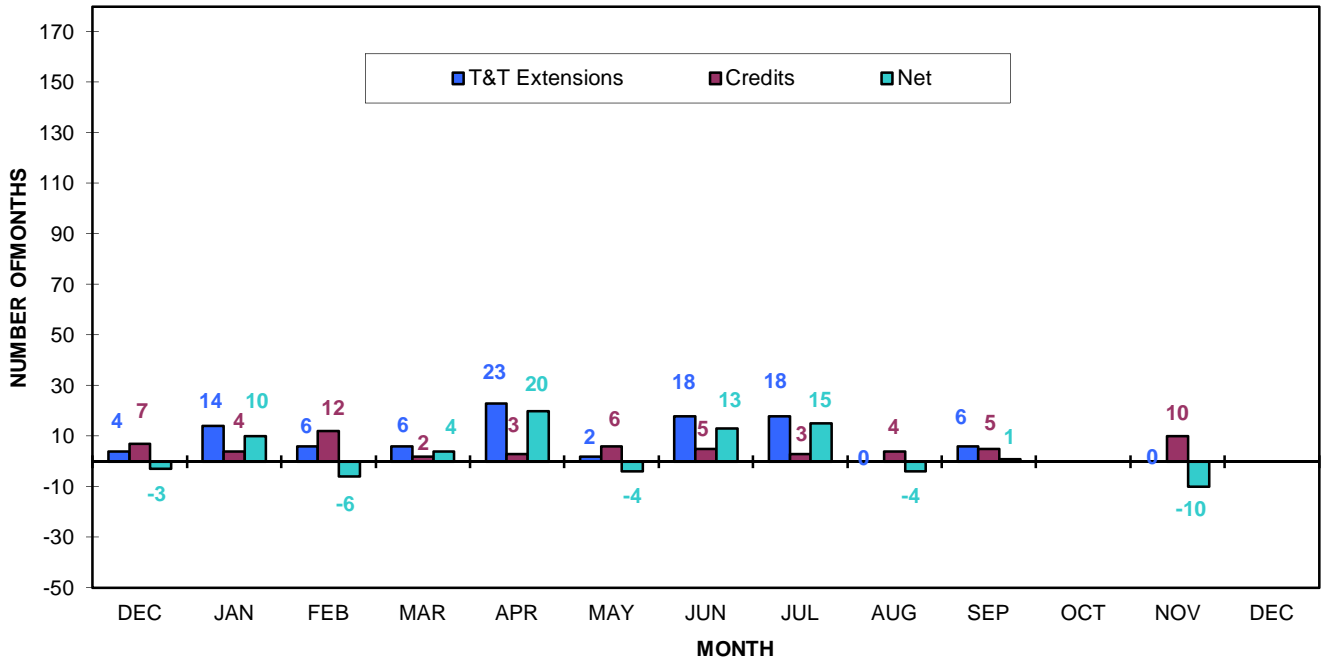
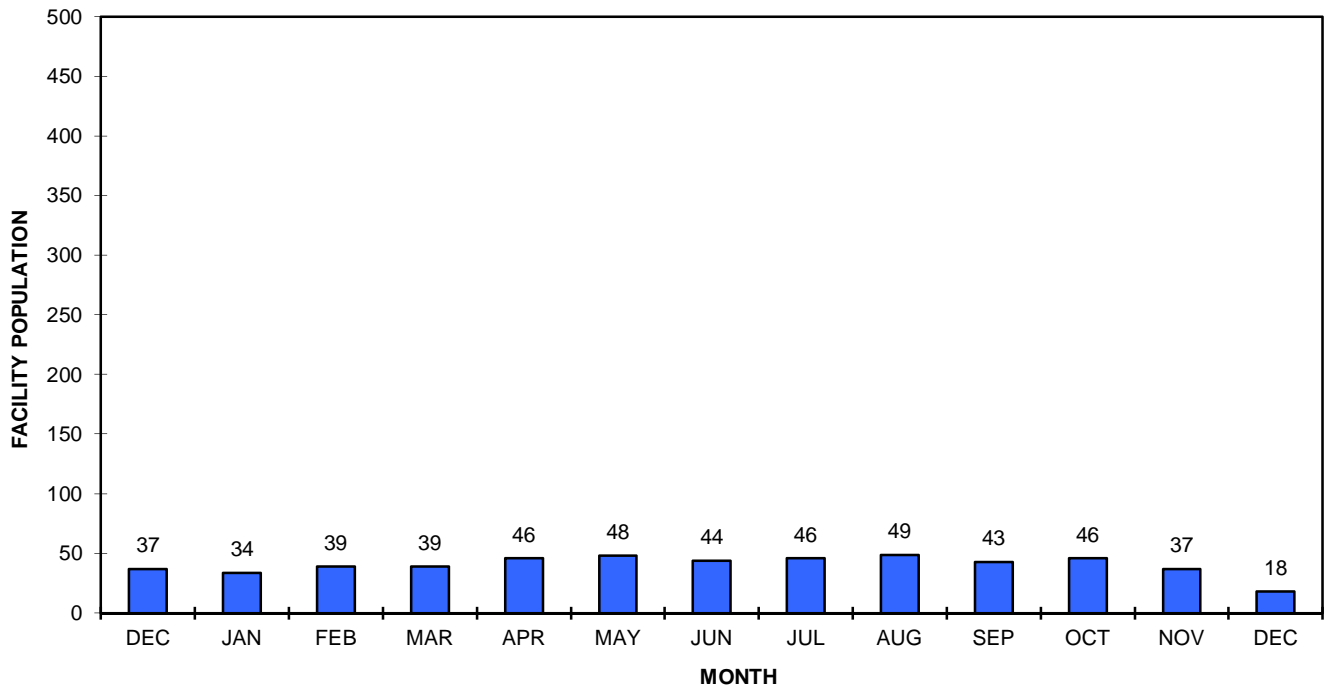


Chart 23C - VENTURA - FEMALES
TREATMENT/TRAINING EXTENSIONS/CREDITS AND NET
FIRST AND RE-COMMITMENTS (NO REVOCATION CASES)
By Month, December 2010 thru December 2011



**CHART 24 - VENTURA CAMP'S AVERAGE DAILY POPULATION
FIRST AND RE-COMMITMENTS (NO REVOCATION CASES)
End of Month, December 2010 thru December 2011**



**Chart 24A - VENTURA CAMP
TOTAL PBD EXTENSIONS/CREDITS AND NET (DDMS and Treatment/Training)
FIRST AND RE-COMMITMENTS (NO REVOCATION CASES)
By Month, December 2010 thru December 2011**

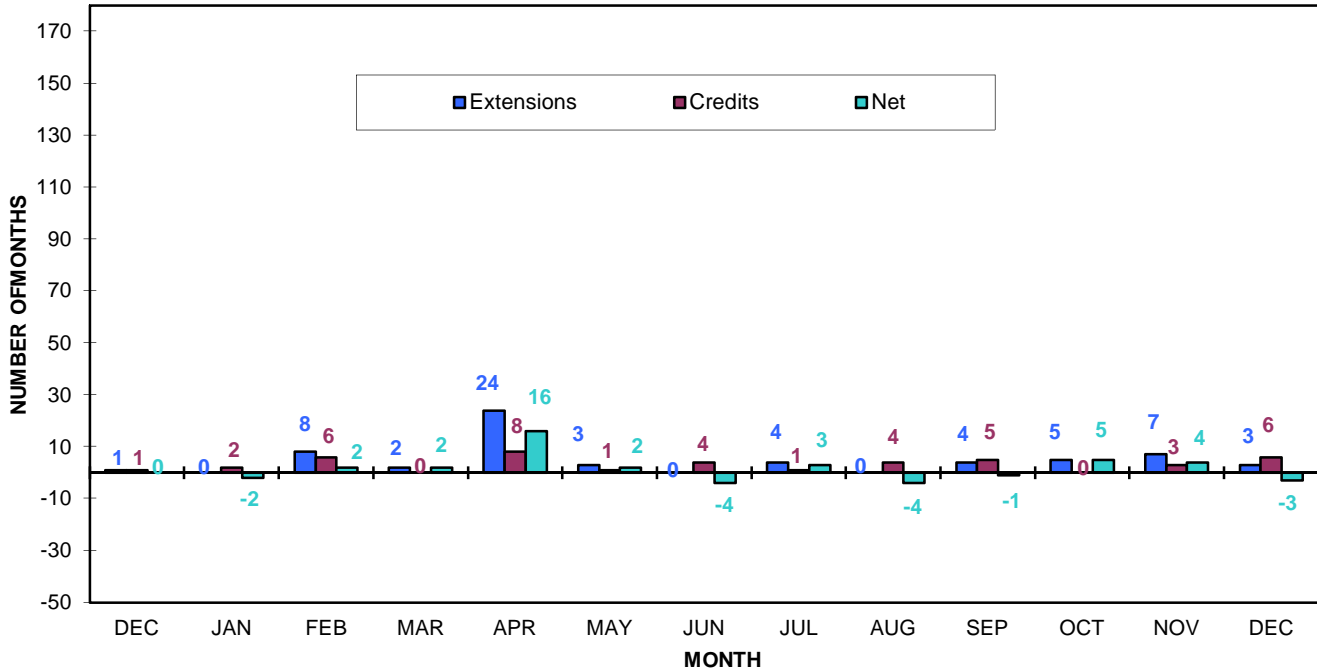


Chart 24B - VENTURA CAMP
DDMS (Disciplinary) EXTENSIONS/RESTORES AND NET
FIRST AND RE-COMMITMENTS (NO REVOCATION CASES)
By Month, December 2010 thru December 2011

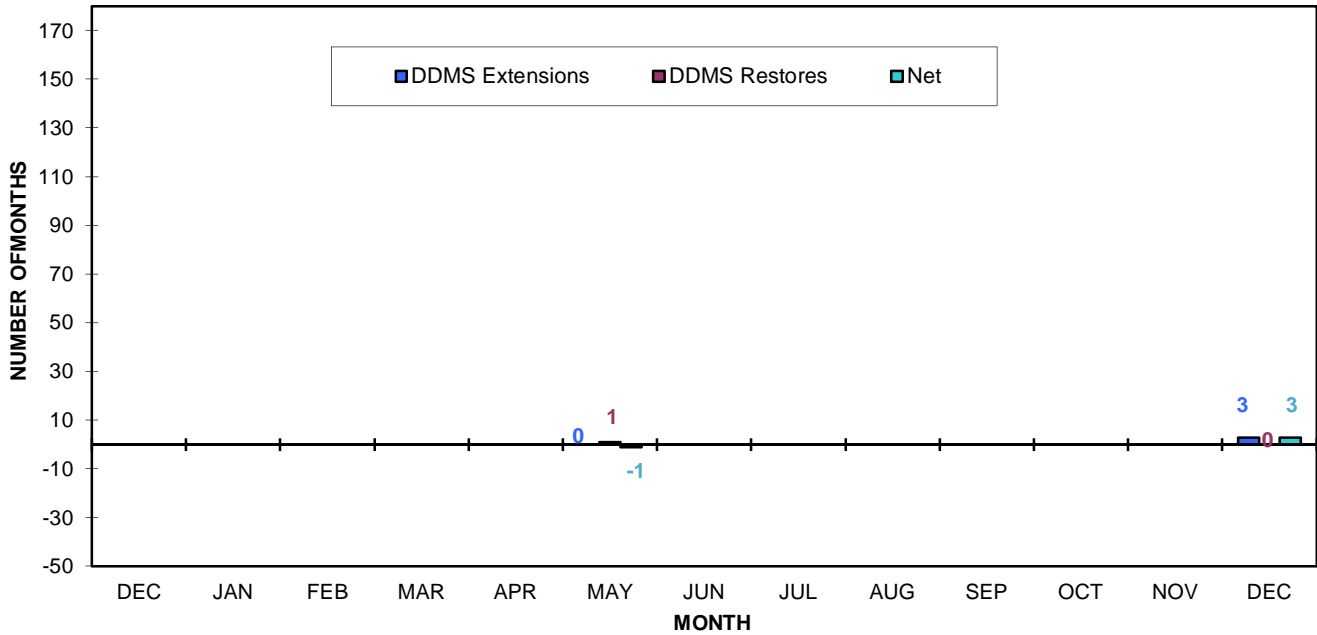
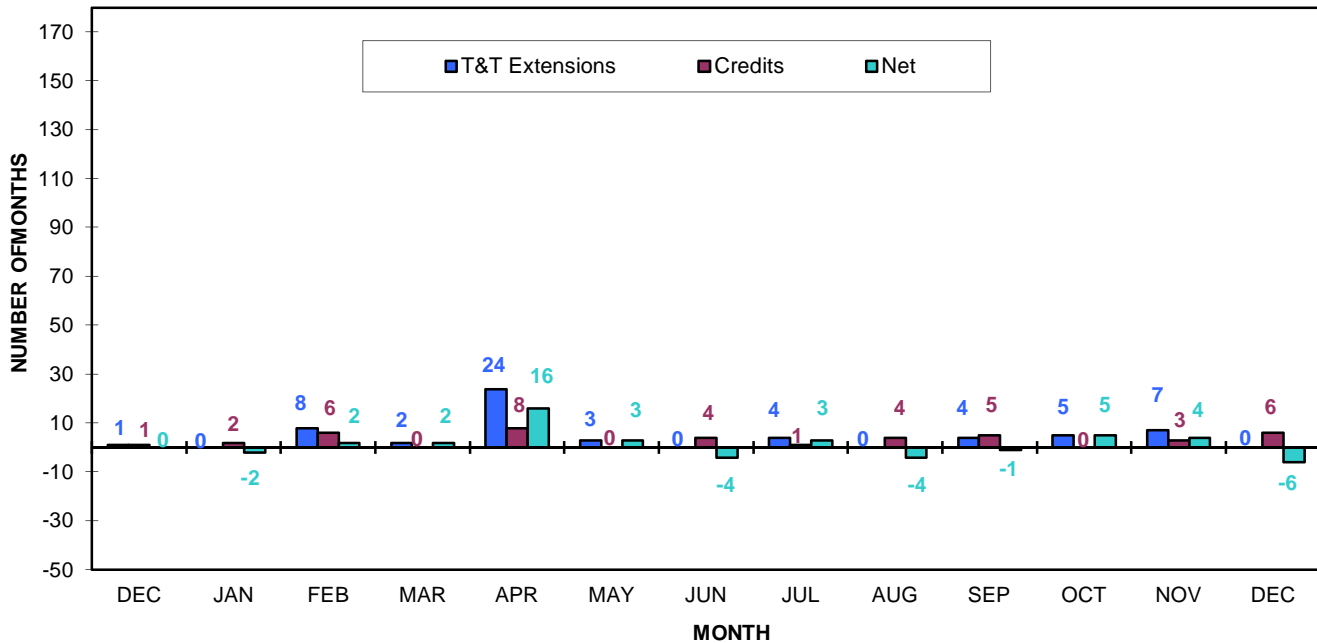
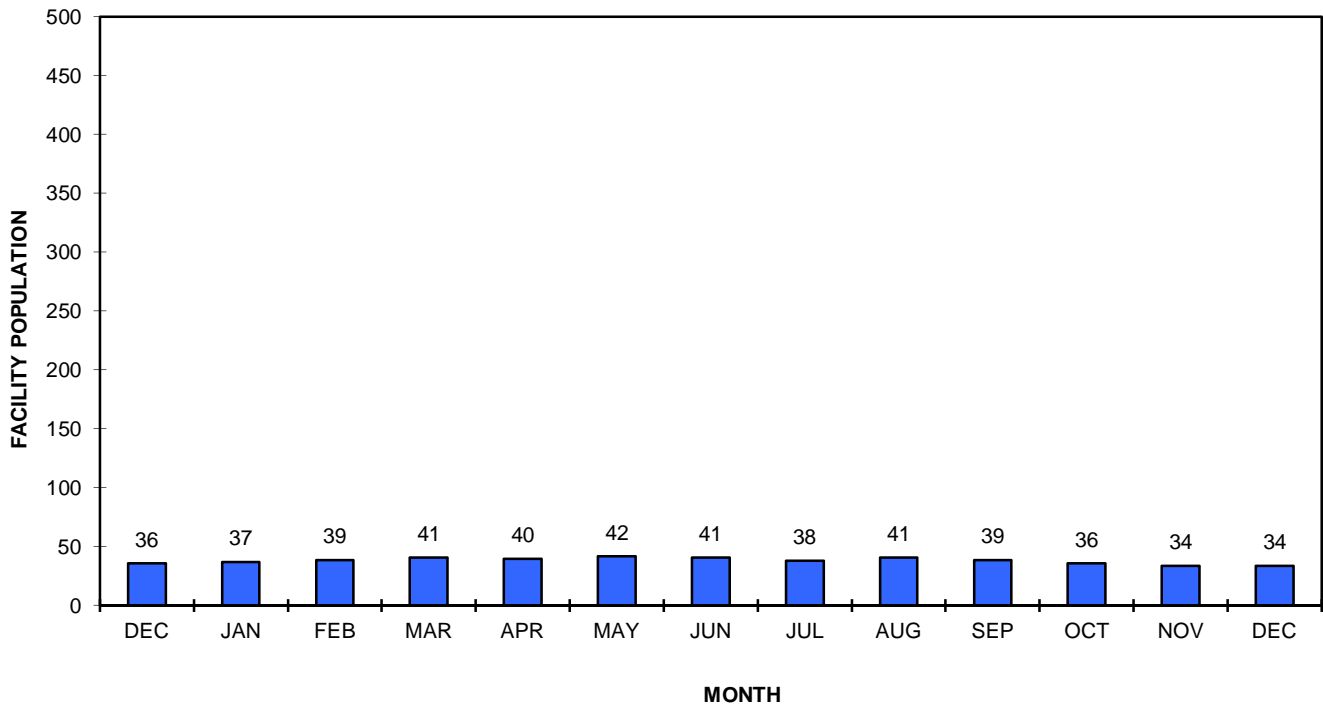


Chart 24C - VENTURA CAMP
TREATMENT/TRAINING EXTENSIONS/CREDITS AND NET
FIRST AND RE-COMMITMENTS (NO REVOCATION CASES)
By Month, December 2010 thru December 2011



**CHART 25 - PINE GROVE CAMP'S AVERAGE DAILY POPULATION
FIRST AND RE-COMMITMENTS (NO REVOCATION CASES)
End of Month, December 2010 thru December 2011**



**Chart 25A - PINE GROVE CAMP
TOTAL PBD EXTENSIONS/CREDITS AND NET (DDMS and Treatment/Training)
FIRST AND RE-COMMITMENTS (NO REVOCATION CASES)
By Month, December 2010 thru December 2011**

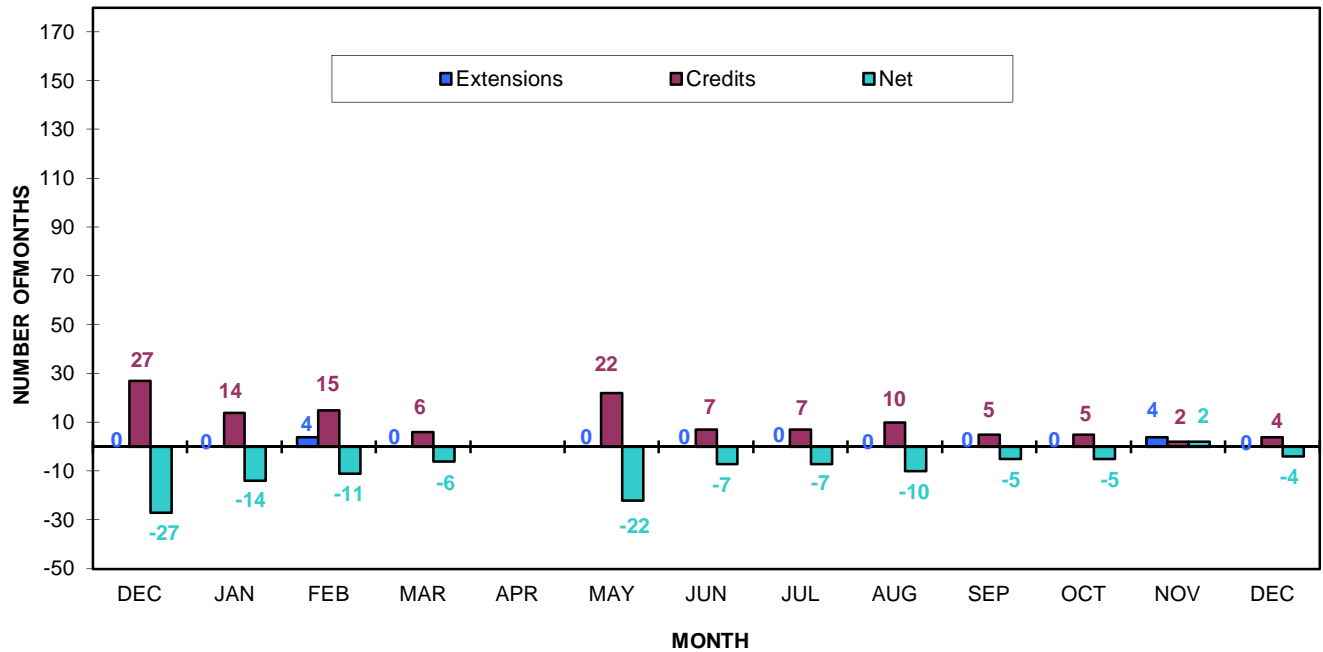


Chart 25B - PINE GROVE CAMP
DDMS (Disciplinary) EXTENSIONS/RESTORES AND NET
FIRST AND RE-COMMITMENTS (NO REVOCATION CASES)
By Month, December 2010 thru December 2011

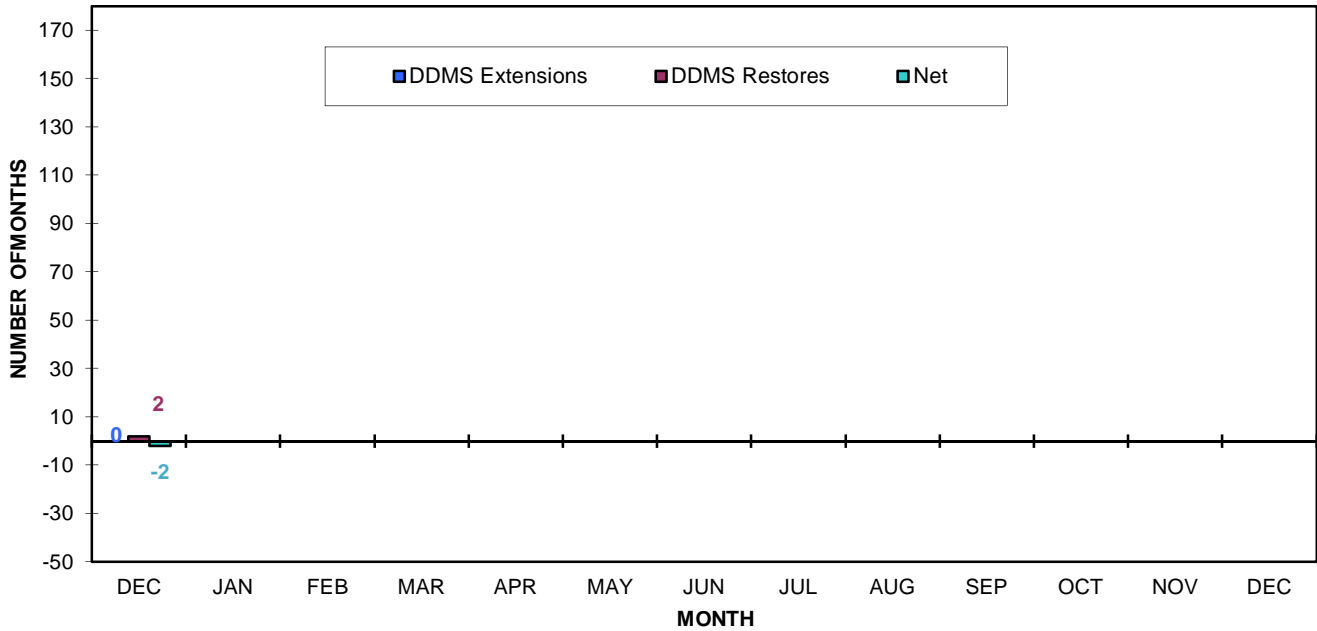
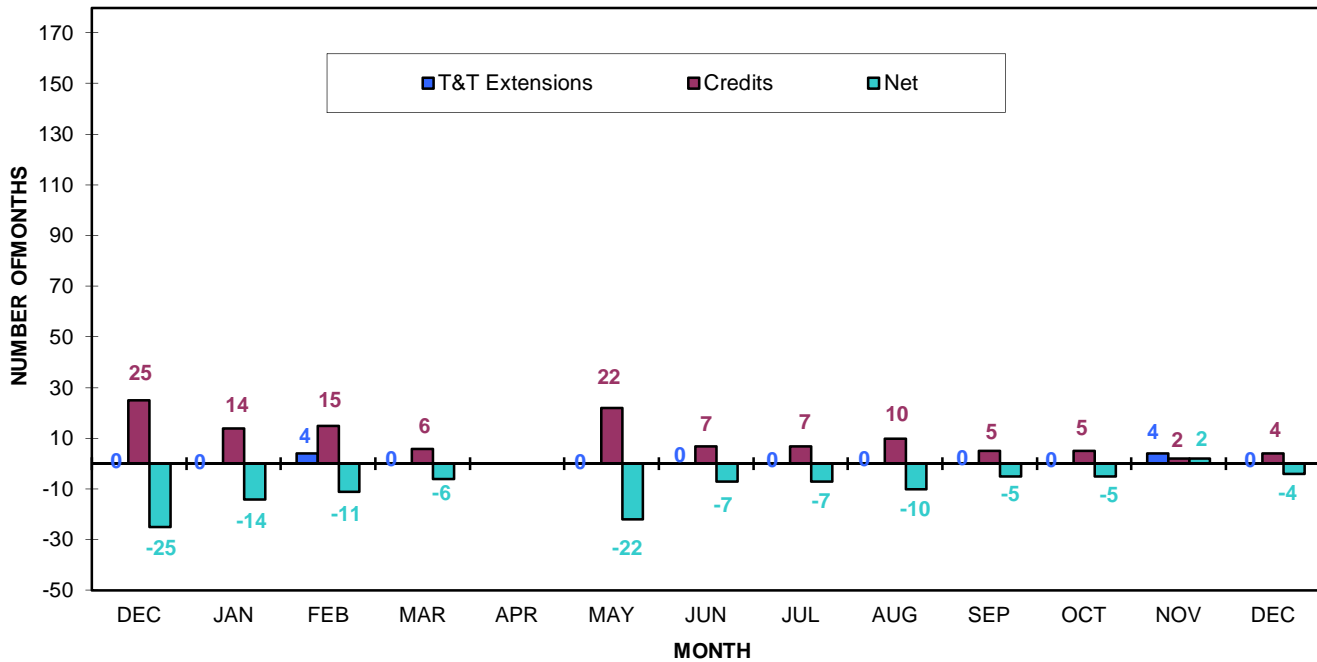
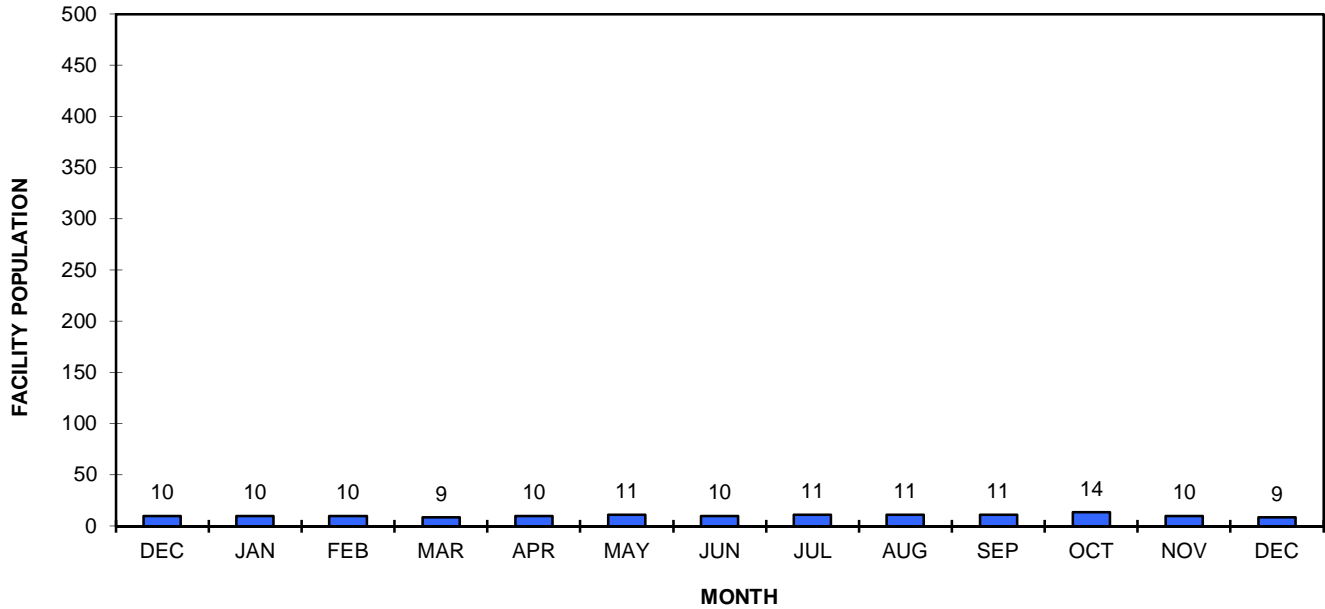


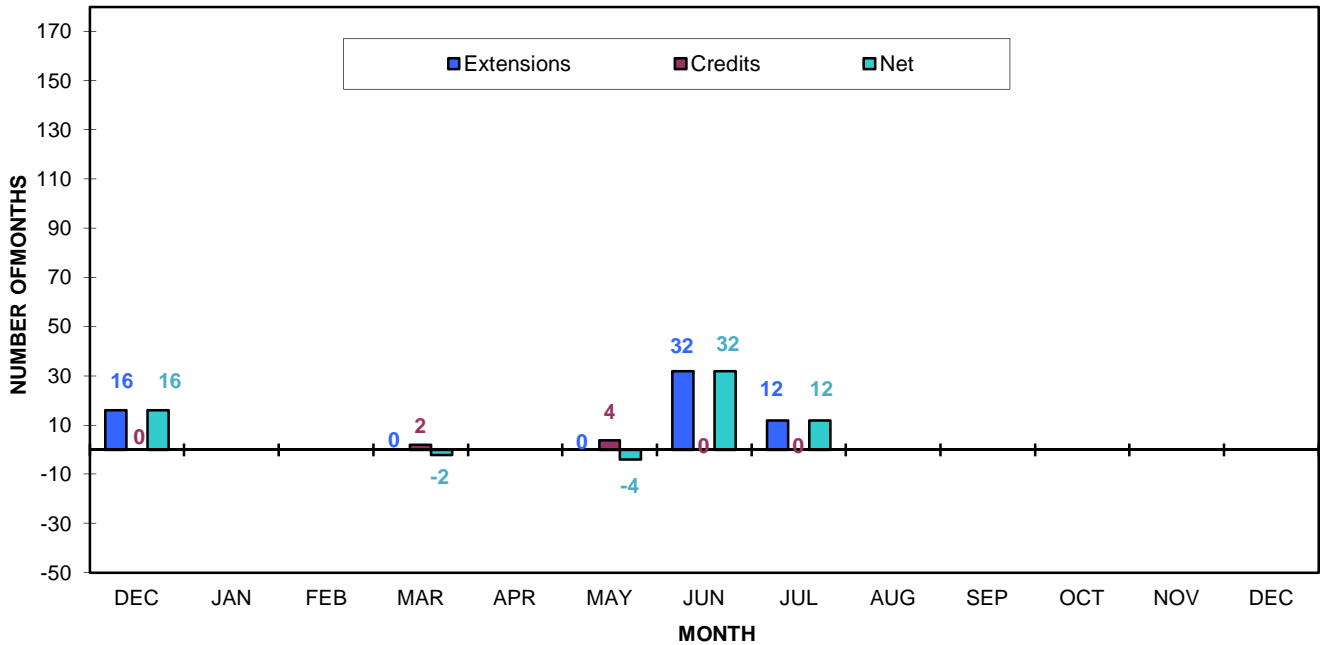
Chart 25C - PINE GROVE CAMP
TREATMENT/TRAINING EXTENSIONS/CREDITS AND NET
FIRST AND RE-COMMITMENTS (NO REVOCATION CASES)
By Month, December 2010 thru December 2011



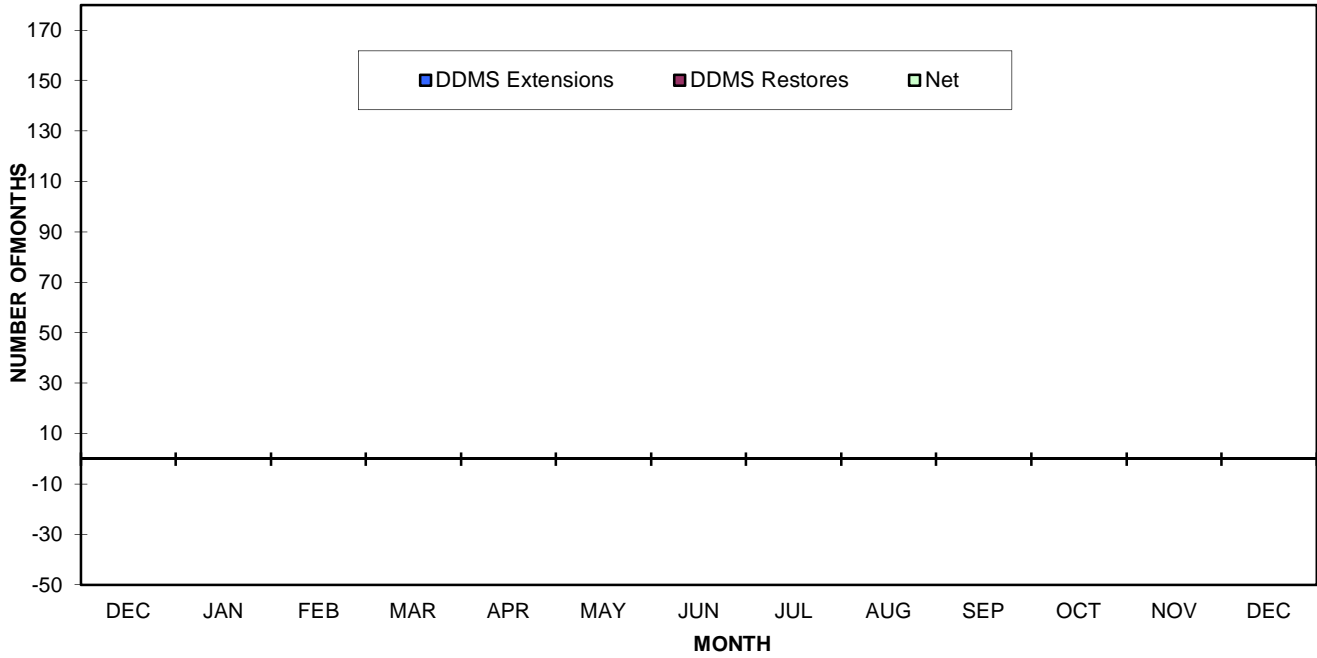
**CHART 26 - DEPARTMENT OF MENTAL HEALTH'S
AVERAGE DAILY POPULATION
FIRST AND RE-COMMITMENTS (NO REVOCATION CASES)
End of Month, December 2010 thru December 2011**



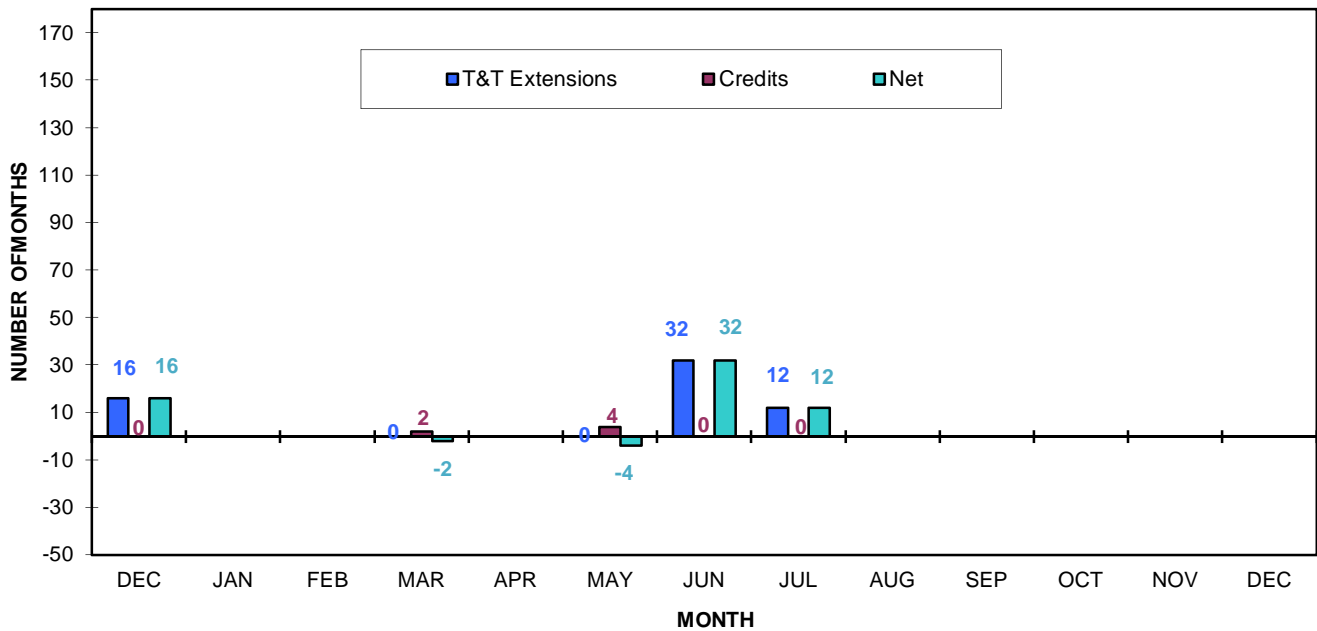
**Chart 26A - DEPARTMENT OF MENTAL HEALTH
TOTAL PBD EXTENSIONS/CREDITS AND NET (DDMS and Treatment/Training)
FIRST AND RE-COMMITMENTS (NO REVOCATION CASES)
By Month, December 2010 thru December 2011**



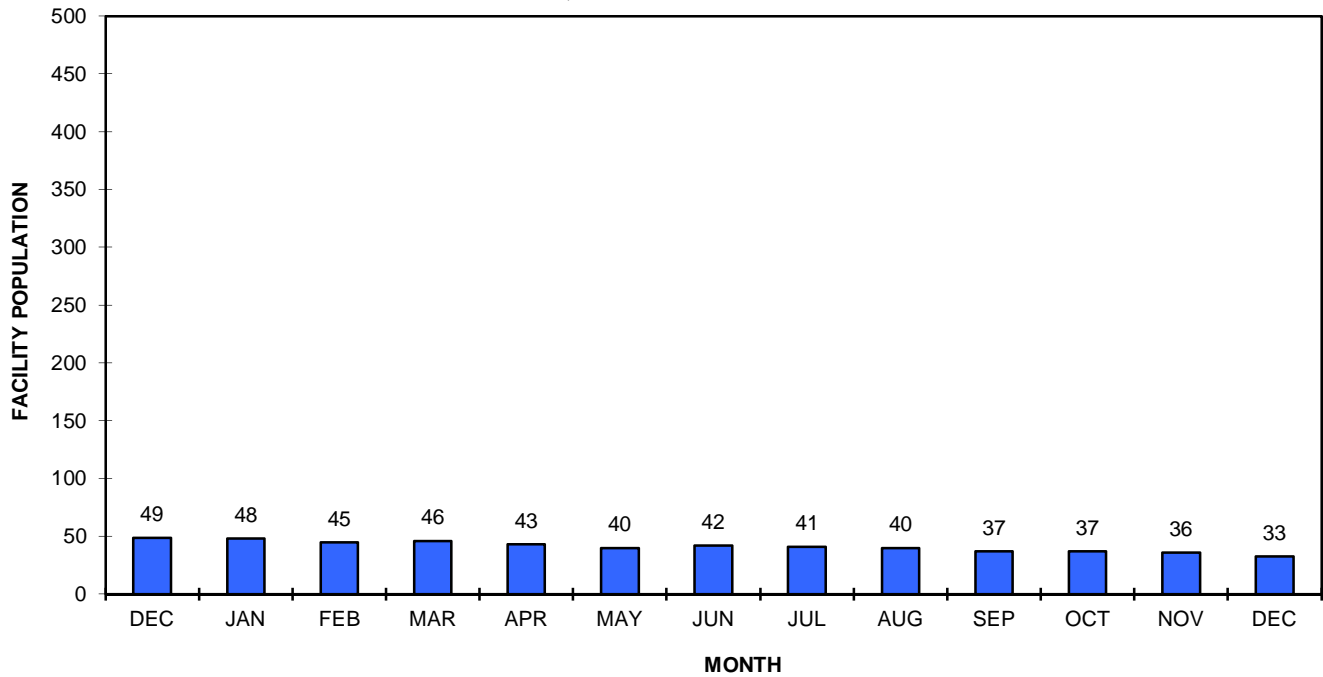
**Chart 26B - DEPARTMENT OF MENTAL HEALTH
DDMS (Disciplinary) EXTENSIONS/RESTORES AND NET
FIRST AND RE-COMMITMENTS (NO REVOCATION CASES)
By Month, December 2010 thru December 2011**



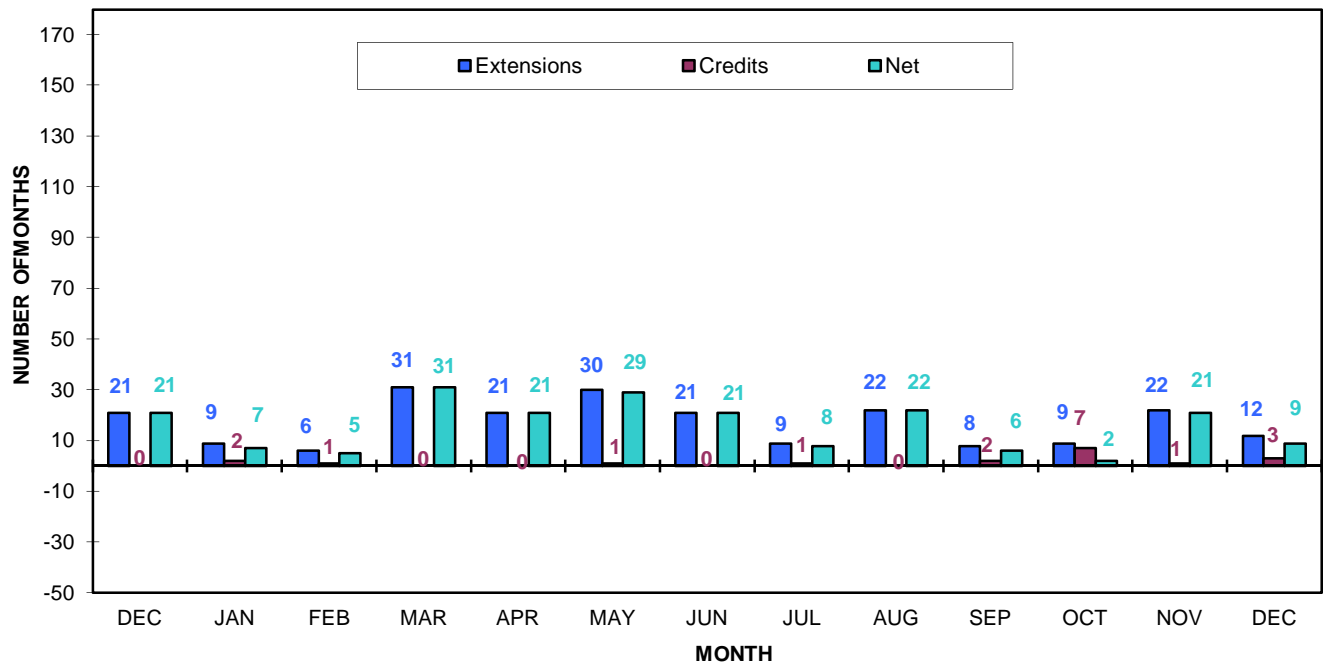
**Chart 26C - DEPARTMENT OF MENTAL HEALTH
TREATMENT/TRAINING EXTENSIONS/CREDITS AND NET
FIRST AND RE-COMMITMENTS (NO REVOCATION CASES)
By Month, December 2010 thru December 2011**



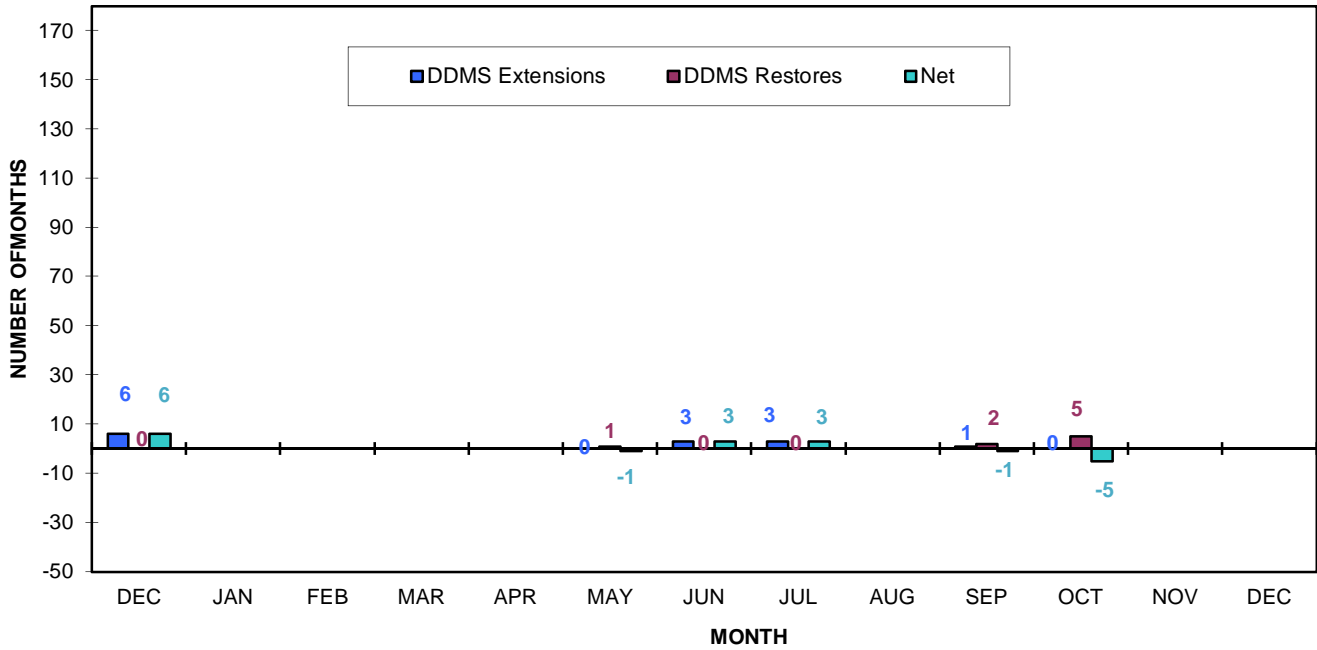
**CHART 27 - HOUSED IN DIVISION OF ADULT INSTITUTION'S
AVERAGE DAILY POPULATION
FIRST AND RE-COMMITMENTS (NO REVOCATION CASES)
End of Month, December 2010 thru December 2011**



**Chart 27A - Housed in a Division of Adult Institution (DAI)
TOTAL PBD EXTENSIONS/CREDITS AND NET (DDMS and Treatment/Training)
FIRST AND RE-COMMITMENTS (NO REVOCATION CASES)
By Month, December 2010 thru December 2011**



**Chart 27B - Housed in a Division of Adult Institution (DAI)
 DDMS (Disciplinary) EXTENSIONS/RESTORES AND NET
 FIRST AND RE-COMMITMENTS (NO REVOCATION CASES)
 By Month, December 2010 thru December 2011**



**Chart 27C - Housed in a Division of Adult Institution (DAI)
 TREATMENT/TRAINING EXTENSIONS/CREDITS AND NET
 FIRST AND RE-COMMITMENTS (NO REVOCATION CASES)
 By Month, December 2010 thru December 2011**

