



Intersection: Homelessness, Criminal Justice and Behavioral Health

September 18, 2019

Cindy Cavanaugh, Director of Homeless Initiatives
County Resources

Sheri Green, County Behavioral Health Services

Meghan Marshall, County Department of Human Assistance

Tiffanie Synnott, Office of Public Defender

Challenges/Opportunities

- Building Common Understanding and Defining Goals
 - Population, interaction with systems
 - Problem statement and direction
 - Scaling flexible re-housing capacity with sustained investment
 - Finding connective tissue between silo-ed systems, including data
-

QUICK STATS – WHAT WE KNOW

2019 Point-In-Time Count

5,570 Individuals Experiencing Homelessness

70% Unsheltered 30% Sheltered



12% Children under 18 years
8% Youth 18-24 years
80% Adults 25+ years



Homelessness has increased by an estimated

19%

in Sacramento County since 2017.

30%

are experiencing chronic homelessness, a lower rate than anticipated given the general increase.



93%

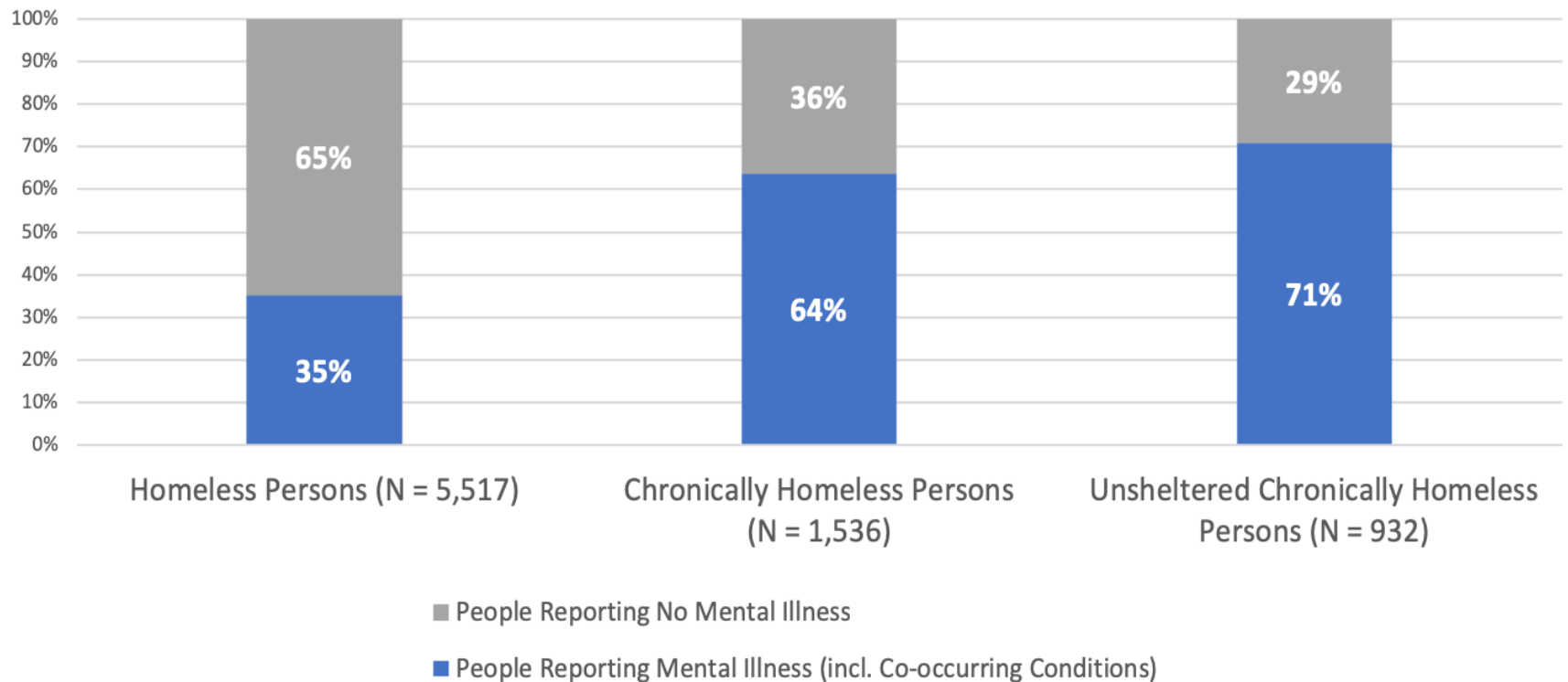
of unsheltered respondents were originally from Sacramento or long-term residents.



Mental Illness Among Homeless Chronically Homeless and Unsheltered Chronically Homeless

Chart 6: Mental Illness Among Homeless, Chronically Homeless, and Unsheltered Chronically Homeless People

Source: HMIS Data (2017 - 2018)



Estimated Criminal Justice System Involvement and Mental Illness Among Unsheltered Homeless in CA

	Estimate	% of Unsheltered Homeless Population
Ever Incarcerated	64,149	70%
Recently Incarcerated	25,660	28%
Presently Justice Involved	1,913	13%
Ever Incarcerated Reporting Mental Health Issues	29,692	32%
Ever Incarcerated Reporting a Serious Mental Illness	13,746	15%

Homeless & Facing Misdemeanor Charges?

50%

For two weeks, Sacramento County Public Defender counted the number of individuals facing criminal charges that law enforcement reported as homeless.

Review of 482 cases indicated 50% of Public Defender clients are experiencing homelessness.

Homeless Services – Aspiring Toward a System



Finding Homeless Resources

- **Drop-In Center/Day Shelter Programs**: Seven (7) programs throughout the county.
- **Year-Round and Seasonal Overnight Shelters**: Thirty-three (33) shelters with a total of 762 beds for singles, families, and youth.
- **Temporary Housing/Transitional Housing Programs**: Sixteen (16) programs offering a total of 669 beds for singles and families.
- **Rapid Re-housing Programs**: Ten (10) programs with 661 slots (permanent housing units or rooms) for singles and families.
- **Permanent Supportive Housing Programs**: Twenty-seven (27) programs for chronically homeless adults or families and adults or families experiencing mental illness, housing a total of 3,028 people in 2,119 households.

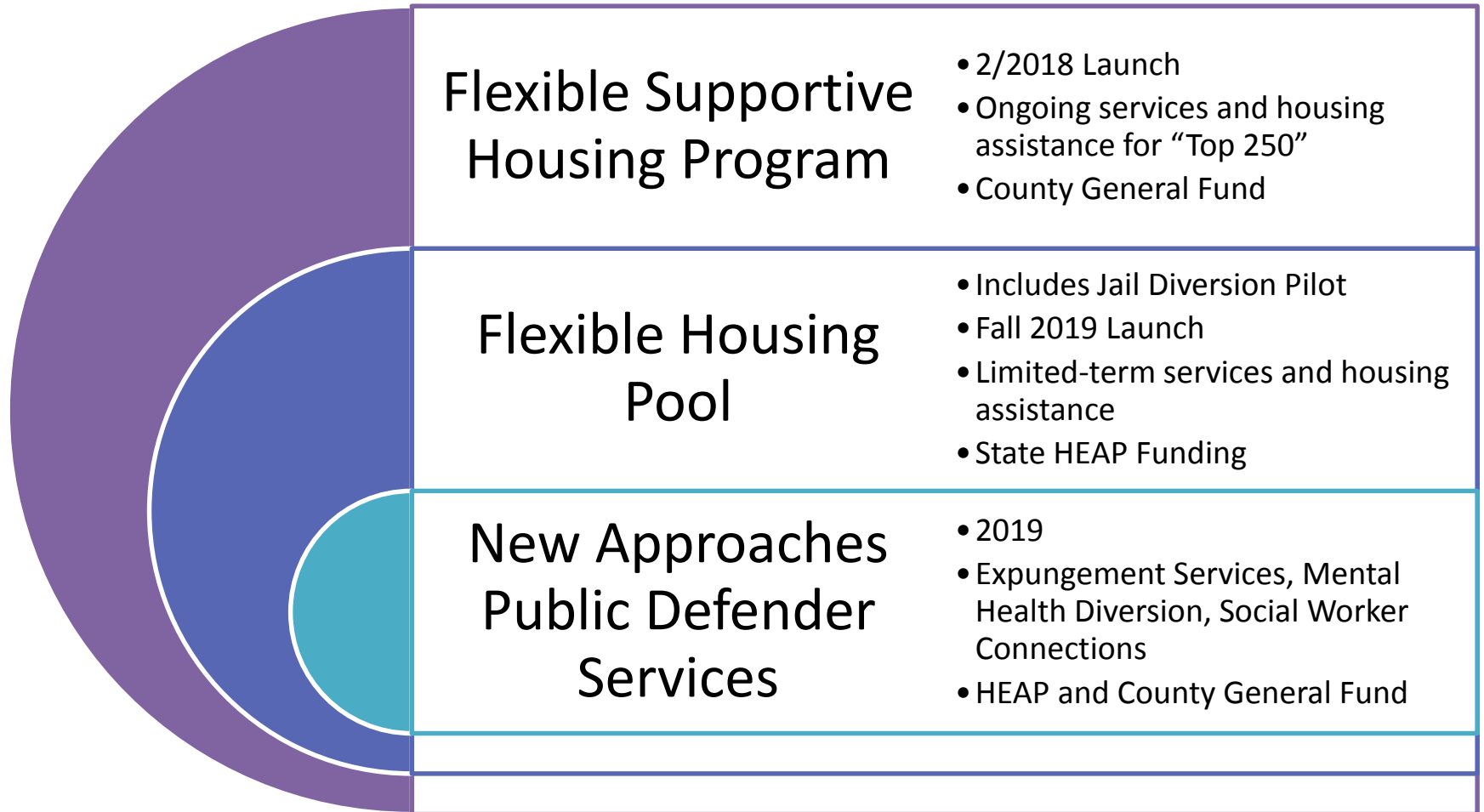
Snapshot: County Homeless Resources

Department	Activities
Office of the County Executive	Homeless Coordination, Strategy and Policies
Child, Family, and Adult Services	Child Protective Services, Bringing Families Home Adult Protective Services, Sr. Safe House
Department of Human Assistance	Targeted CalWORKS Programs, Homeless Services, funding outreach, navigation, shelter, re-housing, County Initiatives
Department of Health Services	Behavioral Health – Mental Health Services and Alcohol and Drug Services; Primary Health; Public Health
Sacramento Housing and Redevelopment Authority	Pubic Housing Authority Finance, Emergency Solutions Grant, Community Development Block Grant, Affordable Housing Finance
Also: Environmental Management Department, Planning and Environmental Review, Parks Department, Probation Department, Public Defender, Sheriff’s Department, District Attorney	

Prevalent Model: People Finding Services



Recent Innovations in Sacramento County



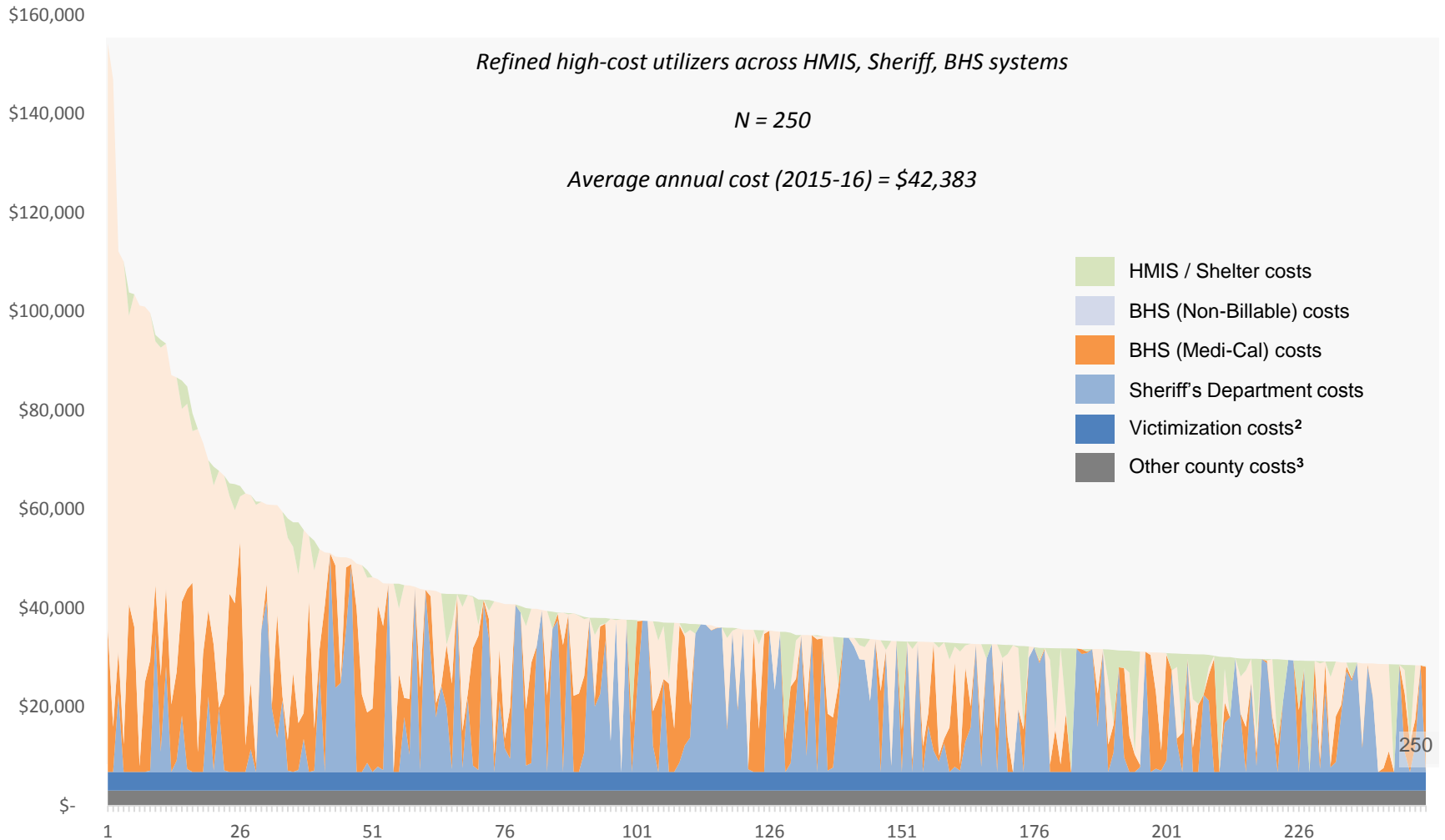
Permanent Supportive Housing for Top 250 Utilizers

FLEXIBLE SUPPORTIVE RE-HOUSING PROGRAM

Flexible Supportive Re-Housing Program

- Based on LA's Housing for Health program
 - Rand Study: Participants used substantially fewer health care services in first year after receiving housing
- Sacramento's FSRP targets top 250 persons
 - Highly targeted to intersection: homelessness, behavioral health, criminal justice
 - Permanent Supportive Housing using **existing housing**
 - Ongoing services and housing supports
 - \$4.5 million annual from General Fund

Cost distribution Across 250 High-Utilizing Individuals Experiencing Homelessness in Sacramento County



FSRP: Services Finding People

Intensive Case Management

- Whatever it takes
- Ongoing engagement and case management
- Navigation to Services: health, behavioral health, benefits, employment, expungement

Property Related Tenant Services

- Secure housing: client choice, shared, master leased, private, public, affordable
- Manage ongoing financial assistance (or leverage housing choice voucher)
- Work with owner and tenant to maintain tenancy
- Identify when higher level of care needed and help to transition

County Flexible Supportive Re-Housing Program Top 250

Notable Demographics of 191 participants, December 2018

Formal Probation	132
Lifetime Sex Offender Registrant	15
Physical Disability	115
Mental Health Diagnosis	154
Substance Use Addiction	127
Co-occurring mental health issues and substance use disorders	112

FSRP Programmatic Flexibility

- Scales up with additional investment
- Flex individual services & length
- Provider/County relationship
 - Ongoing ICMS provider solicitation
 - Per person per month cost
 - 1 to 20 CM ratio
 - Partner for success includes weekly case conferencing
- Housing Focus: Of 250 enrolled, 212 housed



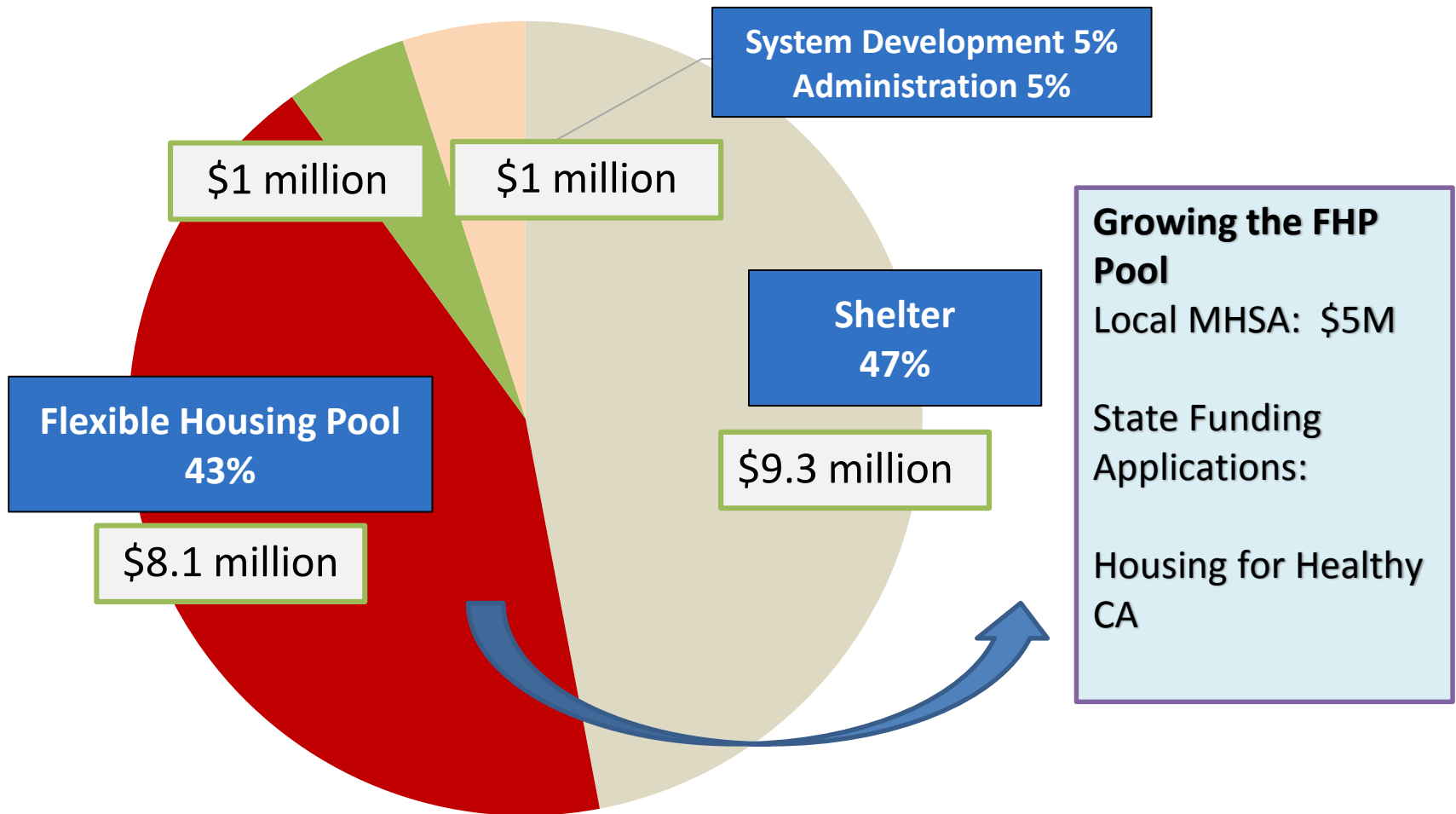
Collaborative Investment Plan for \$19.9 million

New Programs Fact Sheets

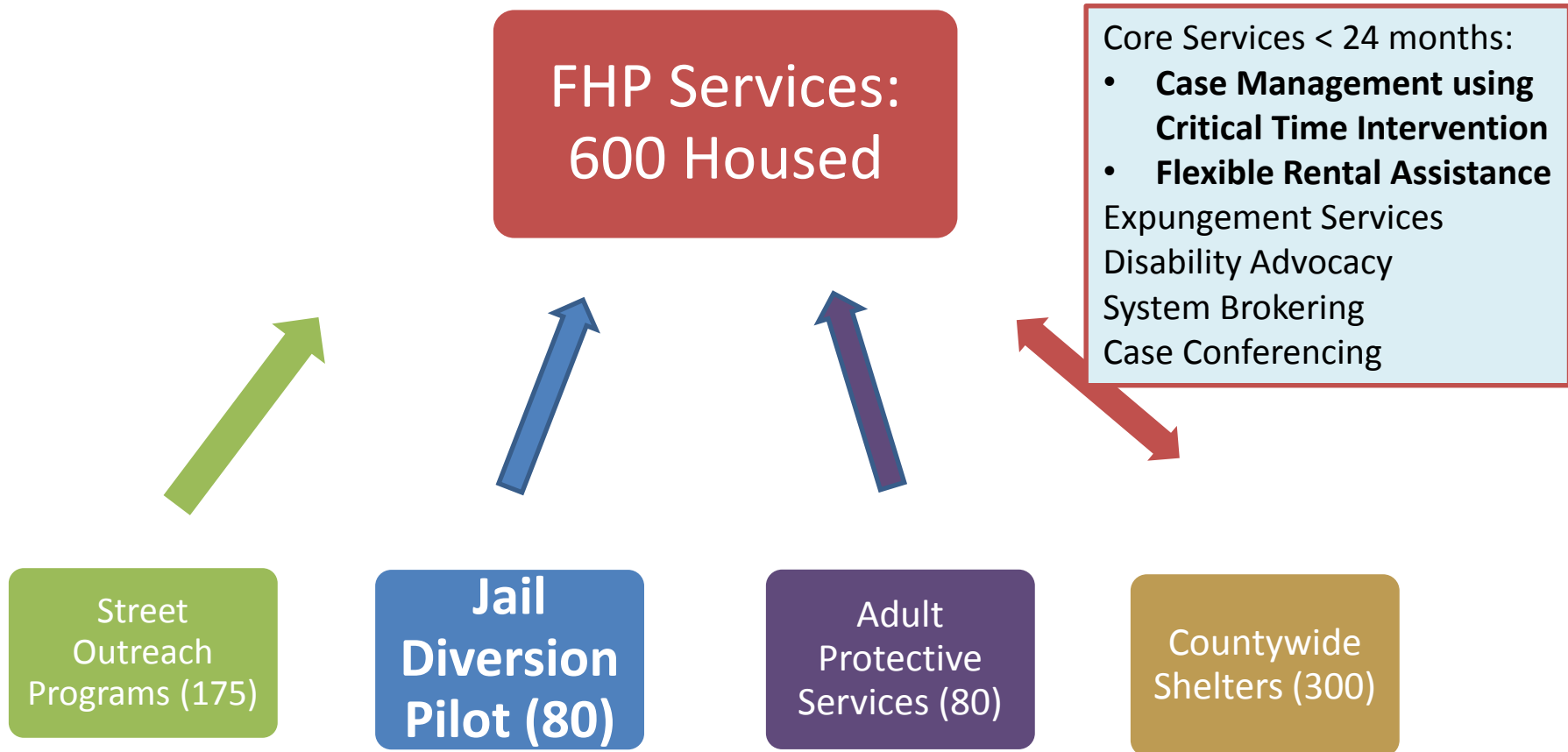
<http://www.sacounty.net/Homelessness/Pages/default.aspx>

FLEXIBLE HOUSING POOL

Initial Investment: State HEAP



FHP: Creating System Flow



Flexible Housing Pool Goals

End homelessness for up to 635 households through stable, permanent housing

Build a **scalable and flexible** re-housing program through flexible housing pool

Connect system partners to FHP re-housing services to create flow in continuum

- Vulnerable seniors and dependent adults active with County APS
- Persistently homeless eligible for jail diversion
- Persons living in emergency shelters
- Persons engaged in street outreach navigation services

Build connections between homelessness system and criminal justice system

- New jail diversion pilot program
- Expungement Services

Increase **re-housing capacity**: Standardize and improve re-housing and supportive services, training academy, system partnering to reduce client barriers

FHP Jail Diversion Process

Step 1: Person experiencing homelessness is pending misdemeanor charges.



Step 2: Public Defender identifies person as a candidate for FHP Jail Diversion



Step 3: Case is negotiated and continued so candidate can meet FHP case manager and written plan for services and housing made.



Step 4: FHP delivers services, interim housing, and re-housing assistance. Candidate is monitored by court for up to one year. Upon successful participation, case is dismissed.

Additional County Efforts

OFFICE OF PUBLIC DEFENDER

Expungement Clinic for Persons Experiencing Homelessness

Increase earning capacity by 30%
Average Employment rates increase 75% to 80-85%

HOUSING
EMPLOYMENT
BENEFITS
LOANS
GUN RIGHTS
VOTING

Jeffrey Selbin, Jusin McCrary, and Joshua Epstein, Unmarked: Criminal Record Clearing and Employment Outcomes Criminal Law/Criminology, 108 J. Crim.L & Criminology 1(2018)

Social Workers in Office of PD



Public
Defender



Social
Worker

Diagnosis

Risk/Needs

Treatment Plan



Mental Health
Diversion

Increase Public Safety

Reduce Jail Utilization

Link to Services: Mental Health
and Housing

Negotiate Case with Holistic
Approach

Challenges/Opportunities

- Building Common Understanding and Defining Goals
 - Population, interaction with systems
 - Problem statement and direction
 - Scaling flexible re-housing capacity with sustained investment
 - Finding connective tissue between silo-ed systems, including data
-