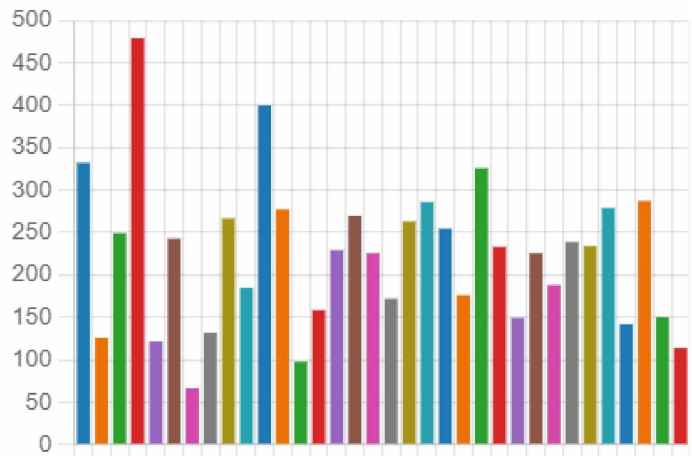


# 1. What is the primary institution that you visit?

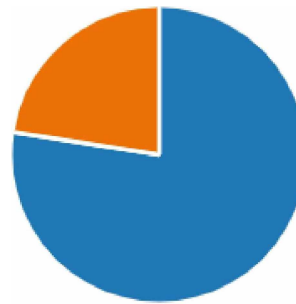
● Avenal	332
● California City	126
● California Correctional Center	249
● California Correctional Institution	479
● California Health Care Facility	122
● California Institution for Men	243
● California Institution for Women	67
● California Medical Facility	132
● California Men's Colony	267
● California Rehabilitation Center	185
● Calipatria	400
● Centinela	277
● Central California Women's Facil...	98
● Chuckawalla Valley	158
● Correctional Training Facility	229
● CSP Corcoran	270
● CSP Los Angeles	226
● CSP Sacramento	172
● CSP Solano	263
● Folsom State/Folsom Women's	286
● High Desert	255
● Ironwood	176
● Kern Valley	326
● Mule Creek	233
● North Kern	149
● Pelican Bay	226
● Pleasant Valley	188
● RJ Donovan	239
● Salinas Valley	234



San Quentin	279
Sierra Conservation Center	142
Substance Abuse Treatment Faci...	287
Valley State	150
Wasco	114

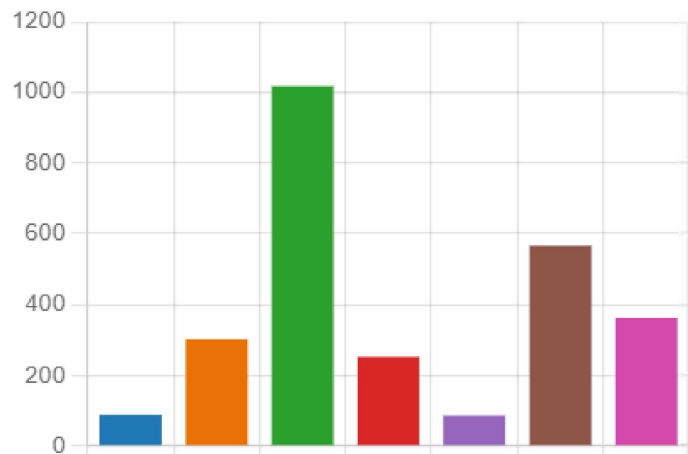
2. Have you participated in a video visit since December 2020?

Yes	5868
No	1711



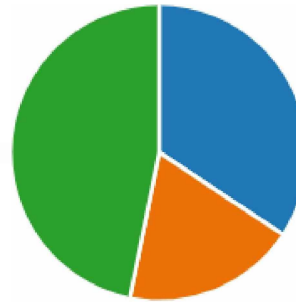
3. If Yes, skip to question 4. If No, why not? (Check as many as apply - this will end your participation).

Don't have access to a compute...	89
Difficulties with registering as a...	303
Unable to get an appointment	1018
Attempted to visit but it was dis...	253
Attempted to visit but my loved...	87
Prefer in-person visits	566
Other	364



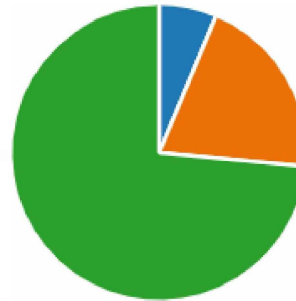
4. If yes, how many times have you participated in a video visit since video visiting began (December 2020)?

<span style="color: blue;">●</span> 1-3	2141
<span style="color: orange;">●</span> 3-6	1180
<span style="color: green;">●</span> More than 6	2925



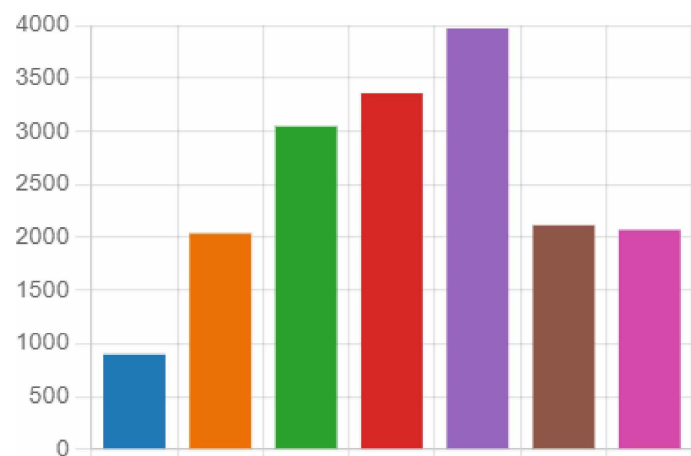
5. How far away do you live from the institution where the incarcerated person you visit is located?

<span style="color: blue;">●</span> 45 miles or less	476
<span style="color: orange;">●</span> 46-150 miles	1533
<span style="color: green;">●</span> More than 150 miles	5570



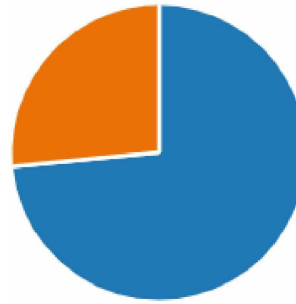
6. Why do you participate in video visiting? (Check as many as apply)

<span style="color: blue;">●</span> Mobility issues	901
<span style="color: orange;">●</span> Transportation issues	2040
<span style="color: green;">●</span> Less expensive for visitors to vid...	3048
<span style="color: red;">●</span> Convenience	3358
<span style="color: purple;">●</span> Distance (live far away, in anothe...	3973
<span style="color: brown;">●</span> Want to include other family me...	2115
<span style="color: pink;">●</span> Other	2072



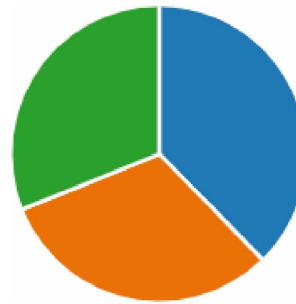
7. Have you had difficulties booking a video visit through the Visitation Scheduling Application?

Yes	5568
No	2011



8. Are you always notified in advance if a video visit is cancelled?

Yes	2855
No	2366
I have never had a video visit ca...	2358



9. Would you rather have one day of video visits and 2 of in-person or return to 3 days of in-person visiting?

Keep some video visiting availa...	3715
Implement 3 days of in-person ...	1466
Expand video visiting to more t...	1847
No preference	551

